



# Eagle Cap sled dog race approaches

By Kathleen Ellyn  
Wallowa County Chieftain

Get ready for the puppies!  
It's almost time for the 2016 Eagle Cap Extreme (ECX) sled dog races, scheduled this year from Jan. 20-23 and we're letting you know about it early so you can volunteer or make your participation plans.  
The race is Oregon's only qualifier for the Iditarod and Yukon Quest and some of these mushers and their faithful canine partners have been coming to

the county for more than a decade and they're friends by now.  
It takes an army to make this race a success and Wallowa County has provided that army year after year, making this a musher's favorite event.  
Visit <http://www.eaglecapextreme.com/> to volunteer.  
There are some new features this year: the 200-mile course has been redesigned and a 62-mile pot race will be held. It's also the second year for the 22-mile Junior Division race.  
All events are free and open to the

public except the Awards Banquet. You'll have lots of chances to purchase ECX fan gear this year as well.  
Race Central will be set up in the Joseph Community Center beginning at 8 a.m. Wednesday, Jan. 20.  
Schedule of events:  
Wednesday, Jan. 20  
• Vet checks, 9 a.m. in Joseph and 1 p.m. in Enterprise  
• Musher Potluck and Program, 6:30 p.m. at Joseph Community Center  
Thursday, Jan. 21  
• First Stage of 62-mile pot race, 100

milers and 200 milers, noon at Ferguson Ridge Ski Area.  
• Salt Creek Summit Crossing, 1-3 p.m.  
Friday, Jan. 22  
• Juniors Race and second stage of 62-mile pot race, noon at Ferguson Ridge Ski Area.  
• Finish At Fergi: Junior's Race, 62-Mile Race, 100 Mile Race  
Saturday, Jan. 23  
• Finish at Fergi: 200 Mile Race  
• Awards Banquet and Dinner, 5:30 p.m. at Joseph Community Center

## SCOREBOARD

**Tuesday, Dec. 22**  
**Girls Basketball**  
Powder Valley 62, Wallowa 17 (La Grande Optimist)  
Joseph vs. lone, cancelled  
**Boys Basketball**  
Powder Valley 64, Wallowa 38 (La Grande Optimist)  
Joseph vs. lone, cancelled  
**Wednesday, Dec. 23**  
**Girls Basketball**  
Dayville-Monument 48, Wallowa 30 (La Grande Optimist)  
**Boys Basketball**  
Wallowa 46, Cove 36 (La Grande Optimist)

**Monday, Dec. 28**  
**Girls Basketball**  
Joseph vs. Neah-Kah-Nie (Driftwood Classic, Neah-Kah-Nie)  
Results unavailable  
lone 42, Enterprise 31 (Oregon Trail Classic, Pendleton)  
**Boys Basketball**  
Joseph 45, Neah-Kah-Nie 41 (Driftwood Classic, Neah-Kah-Nie)  
Enterprise vs. TBD, 7 p.m. (Oregon Trail Classic, Pendleton)

**Tuesday, Dec. 29**  
**Girls Basketball**  
Joseph 50, Jewell 16 (Driftwood Classic, Neah-Kah-Nie)  
Enterprise vs. lone, 5 p.m. (Oregon Trail Classic, Pendleton)  
Results unavailable  
**Boys Basketball**  
Joseph vs. Jewell, noon (Driftwood Classic, Neah-Kah-Nie)  
Enterprise vs. TBD, 7 p.m. (Oregon Trail Classic, Pendleton)  
Results unavailable

## SPORTS CALENDAR

**FRIDAY, JAN. 1**  
**Wrestling**  
Joseph, Enterprise and Wallowa at Joseph High Cosgrove Invitational, 2 p.m.  
Others: McLoughlin, Weston-McEwen, Griswold, Echo, Stanfield, Culver  
**SATURDAY, JAN. 2**  
**Girls Basketball**  
Enterprise @ Grant Union, 4 p.m.  
Joseph @ Union, 4 p.m.  
**Boys Basketball**  
Enterprise @ Grant Union, 5:30 p.m.  
Joseph @ Union, 5:30 p.m.  
**Wrestling**  
Joseph, Enterprise and Wallowa at Joseph High Cosgrove Invitational, 10 a.m.  
Others: McLoughlin, Weston-McEwen, Griswold, Echo, Stanfield, Culver  
**TUESDAY, JAN. 5**  
**Girls Basketball**  
Enterprise @ Elgin, 5 p.m.  
**Boys Basketball**  
Enterprise Boys @ Elgin, 6:30 p.m.

## SKI REPORT

**Ferguson Ridge**  
Open 10 a.m. to 4 p.m. weekends and holidays. Open daily through Jan. 3.  
Snow levels: Unavailable  
For latest info, visit <http://www.skifergi.com>.  
**Anthony Lakes**  
Open 9 a.m. to 4 p.m. daily through Jan. 3.  
Snow levels: 2 inches last 48 hours, as of Tuesday morning; 49-inch base; 125 inches season total  
For latest info, visit <http://anthonylakes.com>.

## Correction

Last week's Prep Roundup omitted key information about the Enterprise boys basketball team's win over Condon/Wheeler on Dec. 20 at Pilot Rock. Rylie Hayward led the team with 20 points, including six 3-pointers.

# GROOMED & READY



Courtesy photo

This photo was taken at the Clear Creek Cabin near Fish Lake. Pictured left to right: Justin Harold, Dustin James and Cody James.

## Gamblers snowmobile club tackles new trails

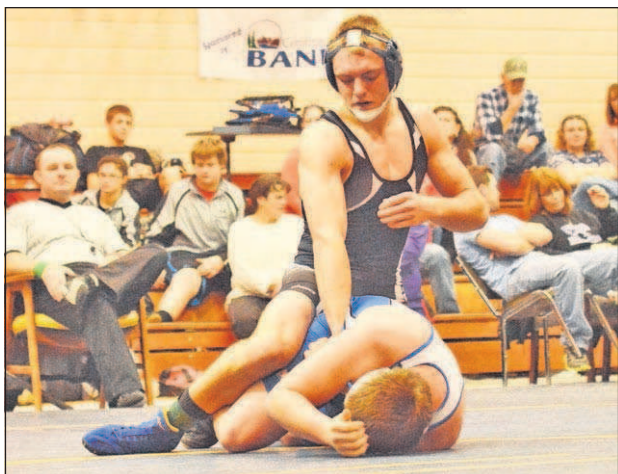
By Kathleen Ellyn  
Wallowa County Chieftain

The snowmobile season has more than begun; it's been going for several weeks.  
In fact, the Wallowa County Gamblers snowmobile club already has finished grooming more than 200 miles of trail from Salt Creek Summit to the Hells Canyon overlook and on to connect with trails groomed by the Halfway Panhandlers.  
They'll keep on grooming "full bore, right on until the Eagle Cap Extreme sled dog races start," said member Randy James of Enterprise.  
Grooming trails for the sled dog race will entail creating a new route out to the Hells Canyon side for the 200-mile contest.  
The first organized event of the year, the

annual 30-mile Poker Run is scheduled for Jan. 16 with dinner and auction to follow again at the Outlaw Restaurant.  
The following Sunday the club will host a memorial ride for longtime member Sam Bowman. More details will be announced before the event. Meet for the Poker Run at Salt Creek Summit. Last year the club sold 175 poker hands and the winner took home \$600. As usual, 10 percent of the take will go to maintenance on the Salt Creek Cabin and grooming shed, the Coverdale Cabin Guard Station in the Imnaha high country and Clear Creek Cabin on the Halfway side of the mountains.  
Other events planned include avalanche classes, to be announced soon.  
The busy club boasts about 40 members and is always looking for more playmates. A membership in the Gambler's includes membership in the Oregon State Snowmobile Association (OSSA) and costs \$40 for the season.  
OSSA encompasses 30 snowmobile

clubs, 25 of which are grooming clubs which operate under and agreement with ODOT. Last season volunteers maintained a 6,000-mile trail system. All clubs participate in trail clearing and trail maintenance. The Gamblers clear trail and do maintenance on emergency cabins year round, going out on ATVs in the summer.  
Club meetings have begun and are scheduled for 7 p.m. the first Monday of each month at the Pacific Power and Light Building in Enterprise. The club has both a website and a Facebook page.  
Individuals interested in taking the avalanche class or purchasing rescue beacons and other necessary safety items for backcountry snowmobiling should contact Outlaw Motor Sports in Enterprise at 541-426-3491.  
All snowmobilers are advised to check conditions before heading out to play. Visit <http://snowmobilewallowacounty.com/> for links to SNOTEL, Wallowa Avalanche Center and more.

Joseph grappler Jared Wilcox subdues his opponent during last year's Jo-Hi Cosgrove Tournament.



Rich Rautenstrauch/Chieftain archives

## Wrestlers to converge at Jo-Hi Cosgrove Tourney

Wallowa County Chieftain

Wallowa County wrestling fans can get their fill of mat action at the Jo-Hi Cosgrove Invitational at Joseph Charter School Jan. 1-2.  
The two-day event is the last chance to see wrestling competition at a local venue this season. All local teams will be competing at road events for the remainder of the season.  
Matches begin at 2 p.m. Friday and

10 a.m. Saturday.  
Enterprise and Wallowa is expected to send wrestlers to the Joseph event.  
McLoughlin, Weston-McEwen, Griswold, Echo, Stanfield and Culver are among the out-of-town schools expected to compete.  
The tournament raises money to fund the JCS wrestling program. Admission prices were not available at press time.

<p><b>2007 DODGE NITRO SXT</b> STOCK # 10350E, 68,984 MI. AWD, AC, PS, PW, PWR LOCKS</p> <p>Price <b>\$10,987</b></p>	<p><b>2012 CHEVROLET EQUINOX LTZ</b> STOCK # 10408, 56,949 MI. AWD, AC, PW, PS, PWR LOCKS</p> <p>Price <b>\$21,500</b></p>	<p><b>2015 FORD F150 SUPERCREW</b> STOCK # 10413, 7,881 MI. 4WD, AC, PS, 5.0 V8, 4X4</p> <p>Price <b>\$36,899</b></p>	<p><b>2010 VOLKSWAGEN TOUAREG TDI</b> STOCK # 10411A, 82,311 MI. AWD, AC, PS, PW, PWR LOCKS</p> <p>Price <b>\$20,885</b></p>	<p><b>MAIN STREET Motors</b> Old Fashioned Values Sales &amp; Service <a href="http://www.main-street-motors.com">www.main-street-motors.com</a> <a href="mailto:sales@main-street-motors.com">sales@main-street-motors.com</a> 311 West Main Street, Enterprise <b>541-426-2100</b></p>
---	--	---	--	--