

Wallowa native wins Rocky Mountain Emmy

University of Arizona film highlights NASA greenhouse project

By Scot Heisel
Wallowa County Chieftain

Cody Sheehy can add "Rocky Mountain Emmy winner" to his list of life accomplishments.

The Wallowa native has been serving as video coordinator for the College of Agriculture and Life Sciences' communications and cyber technologies department at the University of Arizona since 2013.

His recent documentary, "Earthlight," chronicles a NASA-backed project at UA to build 100 percent sustainable greenhouses to support space exploration such as trips to the moon and Mars.

The film earned an award from The Rocky Mountain Emmys on Oct. 17 in the category of topical documentary. Sheehy wrote, directed and produced the film. He shared the award with Executive Producer Dave Bogner.

The Rocky Mountain Emmys are a division of the National Academy of Television Arts & Sciences that is "dedicated to excellence in television by honoring exceptional work ... (in) Arizona, New Mexico, Utah, Wyoming and El Centro, Calif."

"Earthlight" explores the Lunar Greenhouse project, a closed-system food-production program with broad implications both in space and here on Earth.

"Lunar Greenhouse is the third version of this particular project," Sheehy said. "The work has been going on for almost a decade. It started as small project to get food to people."

"The basic concept is to minimize waste, inputs and dependence on the external environment."

Lunar Greenhouse recently received additional funding from NASA, which moved the project to Phase III.



Wallowa native Cody Sheehy and his Emmy on the University of Arizona campus.

Courtesy of Cody Sheehy

"There are three phases of funding," Sheehy said. "Many projects stop at Phase I or Phase II. For NASA to move to Phase III funding is pretty rare."

To learn more about "Earthlight" and to view the film online, visit <http://cals.arizona.edu/earthlight>.

Sheehy still has family in Wallowa and he said he tries to get home at least once a year. But his work can take him all over the world. When the award for "Earthlight" was announced, he was on the other side of the world.

"I was overseas in Israel filming something for my next project," Sheehy said. "I

wasn't even there to get it. I didn't think we would win."

His next project, "Beyond the Mirage," tackles the complex water issues gripping the Southwest United States. To learn more, visit www.BeyondTheMirage.org.

"The purpose of ("Beyond the Mirage") is to raise awareness about southwest water issues. We're entering a new era of water. We've already seen the effects of drought in California. It's the first of a series of new, big issues we face.



Chieftain archives

A wagon ride sponsored by The Outlaw for the 2005 Joseph Parade.

2015 Jingle Thru Joseph schedule of events

Friday, Nov. 27

10 a.m. to 5 p.m.: Christmas Bazaar at Joseph Community Center

Saturday, Nov. 28

10 a.m. to 5 p.m.: Christmas Bazaar at Joseph Community Center
5 p.m.: Jingle Thru Joseph Parade

Friday, Dec. 4

10 a.m. to 5 p.m.: Christmas Bazaar at Joseph Community Center
4-7 p.m.: Phinney Gallery Open House

Saturday, Dec. 5
10 a.m. to 5 p.m.: Christmas Bazaar at Joseph Community Center
Noon: Holiday Bus Tour

Monday, Dec. 6

5-7 p.m.: Ladies' Night at Joseph Hardware and Tempting Teal Boutique

Thursday, Dec. 10

5-8 p.m.: Holiday open houses at Chief Joseph Days Rodeo Office and Sports Corral

Thursday, Dec. 17

3-7 p.m.: Valley Bronze Open House
5-7 p.m.: Mens' Night at Joseph Hardware and Tempting Teal Boutique

Saturday, Dec. 19

3-6 p.m.: Holiday open houses at The Sheep Shed, ToZion, Lamb Trading Co.
For more information, visit JosephOregon.com on Facebook

COMMUNITY CALENDAR

Thursday, Nov. 26

Community Connection, 702 NW 1st St, in Enterprise, is hosting its annual Community Thanksgiving Dinner from 1 to 2 p.m. Dinner is free, but a donation of canned goods for the food bank is requested. Attendees are encouraged to bring a pie for the dessert potluck.

The Hydrant Bar & Grill at 100 S. Main St. in Joseph is hosting its 22nd annual Thanksgiving Dinner from 2-4:30 p.m. Dinner is free. For more information, call 541-263-1616.

Saturday, Nov. 28

Joseph invites you to Jingle thru Joseph, shop throughout town, enjoy holiday music, warming fires and hayrides. The parade begins at 5 p.m.

Lower Valley Farmers' Market, 11 a.m. to 4 p.m., 301 E. 1st St., Wallowa.

Sunday, Nov. 29

Fergi Work Days have started for all ski club members and volunteers from 1 to 5 p.m. every Sunday until the hill opens. Brush piling, fire wood cutting/splitting, and area clean up are required.

Tuesday, Dec. 1

Wallowa County Extension is offering a candy-making workshop hosted by Debi Warnock and Vivian Tillman from 6-8 p.m. at Cloverleaf Hall. Cost is \$15, and the workshop is limited to the first 12 paid participants. Call the Extension Office at 541-426-3143 to register.

Wednesday, Dec. 2

Sam Collett hosts a twice-monthly still life drawing gathering, complete with a live model every first and third Wednesday of the month from 7-9 p.m. at the Joseph Center. \$5-10 suggested donation for model. All skill levels welcome.

Thursday, Dec. 3

The Enterprise High School Choir will perform at the Enterprise Community Congregational Church — aka "The Big Brown Church," at 301 NE First St. — for the annual Holiday Soup Luncheon fundraiser. Doors open at 11 a.m. and lunch will be offered through 2 p.m., with the choir performance at noon. Lunch includes a bowl of homemade soup, a roll, a piece of pie and coffee, tea or water. The lunch is sponsored by the Women's Fellowship, and is by donation, with a portion of proceeds going to the Enterprise High School Choir, Safe Harbors and Community Connection.

The Joseph Center for Arts and Culture will be hosting its second annual Gift of Art event from 7 to 8:30 p.m. Doors open at 6:30. The silent auction begins at 7 p.m. and includes works by local artists, high school students, and art collectors who have donated art to sell. Fifty percent of the proceeds go to the artists and the other half goes toward the Youth Art Program. All artwork that doesn't sell will be for sale for \$50 each through to Dec. 24. The Youth Art Program will have art-

work on display Dec. 15-18 in the main gallery with the Gift of Art.

Friday, Dec. 4

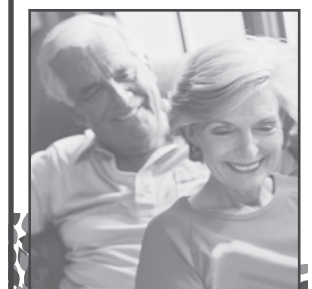
Wallowa County's Holiday Party and book signing. 10 a.m. to 3 p.m.: Ornament making, crafts, snacks and hot apple cider. 1-3 p.m.: book signing & presentation for "Wallowa Lake — The REAL Story," a new children's book hot off the press. 508 S. Main St. in Joseph.

Saturday, Dec. 5

Ski, Snowboard & Ice Skate Swap, 10 a.m. to 1 p.m., Odd Fellows Hall in Enterprise. Skis, boots, poles, snowboards, ski/snowboard clothing, ice skates, and hockey gear. To sell gear, drop it off Dec. 5 from 8 to 10 a.m. at the Odd Fellows Hall. If unsold, pick it up before 2 p.m. Items not picked up will be donated to Sorooptimist Thrift Shop. Swap is a fundraiser, with 50 percent of proceeds going to Eagle Cap Ski Club and Wallowa Valley Community Ice Rink. More info: Anette Christoffersen, 541-398-1148.

Lower Valley Farmers' Market, 11 a.m. to 4 p.m., 301 E. 1st St., Wallowa.

MEDICARE BIRTHDAY RULE



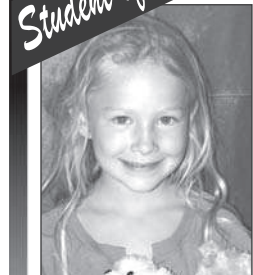
If you have a Medicare Supplement Plan you have 30 days after your birthday to compare & apply for a new Supplement Plan.

Call Kathleen or Heather TODAY to discuss your options for a lower Medigap premium.

541-426-4208
Locally owned & operated
616 W. North Street, Enterprise



Student of the Week



LeAnna Scott
Enterprise Seventh Day Adventist School

LeAnna Scott is a second grader at Enterprise SDA School. She is an excellent reader and a great help with the younger students in the lower grades classroom. Her constant smile and enthusiastic spirit makes our classroom a positive environment for learning. Great job, LeAnna!

Proudly Sponsored by

Community BANK
Member FDIC

Joseph 432-9050
Enterprise 426-4511
Wallowa 886-9151

The Student of the Week is chosen for academic achievement and community involvement. Students are selected by the administrators of their respective schools.

simple basic toys

THE ONES THEY PLAY WITH AGAIN AND AGAIN
THE ONES THEY REMEMBER FOREVER

Inland Octopus provides an extraordinary assortment of toys that inspire thought, activity and happiness through accomplishment.

OPEN 7 DAYS A WEEK
closed Thanksgiving

FREE GIFT WRAPPING!

7 EAST MAIN
WALLA WALLA

Time for a Computer Tuneup?

J's PLACE
Spyware Removal & More
541-426-0108
110 W. Main Enterprise

ATHLETE OF THE WEEK

This week's athlete of the week is 2014 Enterprise High School graduate David Ribich. Ribich is a cross country runner who currently attends Western Oregon University. Ribich previously won state championships in the 1500 and 3000 meter events before moving on to college.

On Nov. 21, Ribich competed in the NCAA Div. II cross country championships in Joplin, Mo., placing 67th in a field of 246 runners. Ribich qualified for the championships in a Nov. 7 regional meet in Monmouth where he beat his personal best in the 10,000 meters by two minutes. Ribich is the son of Jenny Reinhardt of Enterprise.

DAVID RIBICH

Proudly Sponsored By:

Eastern Oregon's Full Service Propane Supplier

201 E. Hwy 82, Enterprise
541-426-0320
www.edstaub.com

Eds
Ed Staub & Sons
Energy. Community. Service.

App-solutely we have you covered

Our e-Edition is now available 24/7 on any device everywhere you are

• iPad • iPhone • iPod Touch • Android • Kindle

Available on the App Store | ANDROID APP ON Google play | Available at amazon

*All apps are free to download. Must be a subscriber to view e-Edition.

Call 541-426-4567 to subscribe

Wallowa County CHIEFTAIN