

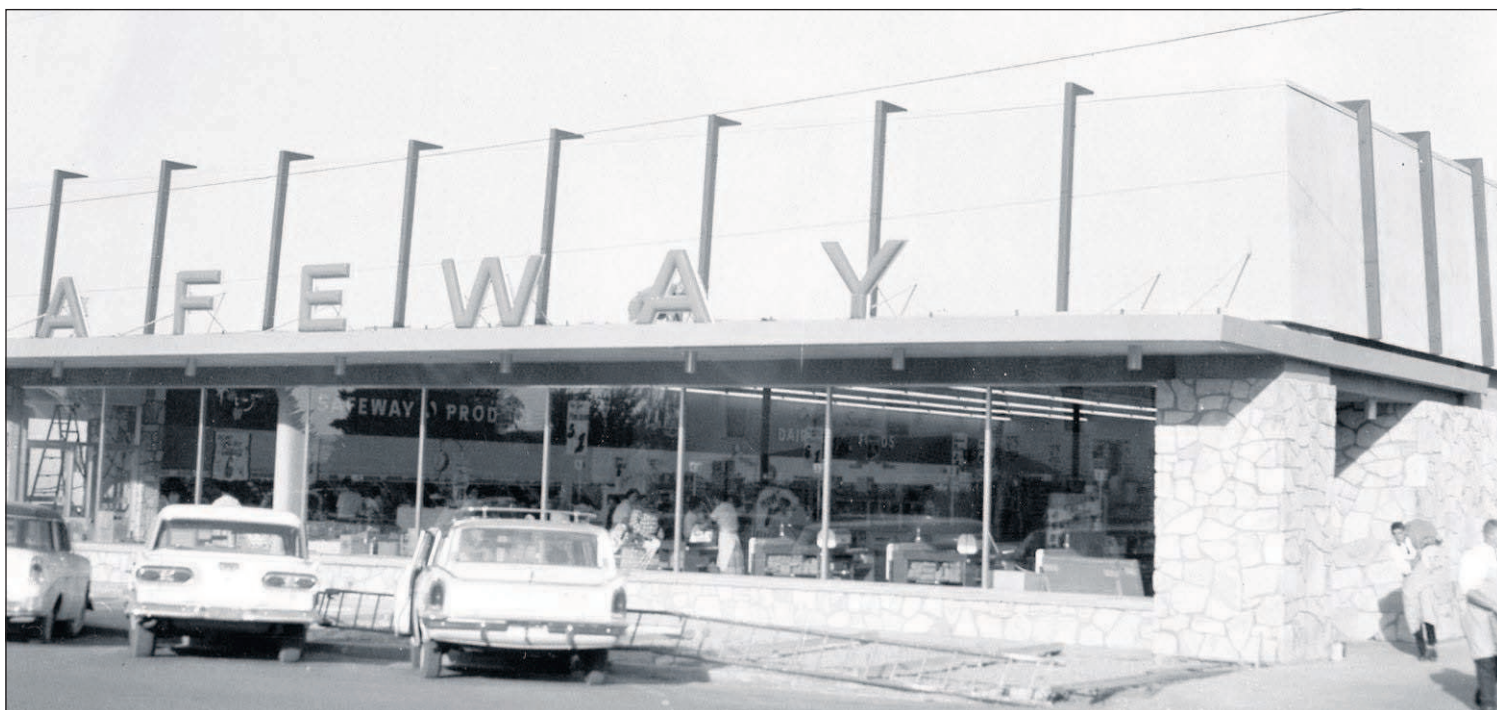
# Christmas lights return to Enterprise

**100 YEARS AGO**  
**Nov. 9, 1915**

Estimates of expense for the county for next year are shown in the annual budget of the county published this week by Clerk C. H. Zurcher for the county court. The total, representing the amount of money to be raised by taxation in 1916, is \$147,045. This is \$17,227 greater than the total of the year previous, which was \$128,818.

Within a week the first train of logs should arrive in Enterprise at the East Oregon company's mill. A large quantity of logs has been cut at the Brown camp in the timber and is ready for shipment. The company has rented 15 log cars of the O-W railroad.

Dedication deeds placed on record last week open West Second Street, Enterprise, from Alamo street, opposite the depot, to Litch street, near the home of J. C. Conley. The



The former Safeway store at 107 NW 2nd St. in Enterprise. Most recently, it was the site of ACE Hardware, which in the last few weeks has moved to the intersection of North and River streets.

Chieftain archives

signers of the instruments were E.B. Knapp, G.S. Reavis and R.F. Stubblefield. The land they gave extends a dis-

tance equal to two city blocks. This is a long step toward opening another street from the business quarter of town, a project which has been under way quietly since last spring. Everything has been accomplished to date at private expense, and so without cost to the city.

Advertisement: Instantaneous Delivery for your message over our Long Distance Lines. Sure-Safe-Speedy. Home Independent Telephone Co.

**70 YEARS AGO**  
**Nov. 8, 1945**

Returning servicemen registering their discharge papers in the office of the county clerk during the past week: 2nd Lt. Marvin J. Searles, S-Sgt. Myrl D. Zollman, Pfc. Donald O. Mitchell, CMM

Harold C. Voetberg, Pfc. Otis W. True, T-4 Chester L. Wise, Pvt. Doria L. Audet, Sgt. Bennie S. Smith, S-Sgt. Dan A. DeBoie, S-Sgt Russell D. Reams, T-5 Donly W. Daggett, Pvt. Ferman A. Warnock, 1st Lt. Reid Johnson, Cpl. Freilan C. Warnock, S-Sgt. William Dorrance, T-Sgt. Wesley R. Walker, Sgt. Mansel G. Pyles, Sgt. Kenneth Goebel, Sgt. John C. Musty. Note the rank of these boys. The community is proud of the records Wallowa county boys and girls have made in World War II.

The Enterprise chamber of commerce voted Tuesday night to decorate Main street again this year for the Christmas season. During the war Christmas lighting was banned by government orders.

**50 YEARS AGO**  
**Nov. 11, 1965**

The newly opened Fashion Center next to the Coast to Coast store in Enterprise will hold open house on Friday November 12. Refreshments of coffee and cookies will be

## OUT OF THE PAST

Compiled by Cheryl Jenkins

served throughout the day and the event will be topped off with a drawing for two gift certificate door prizes. The first twenty ladies to arrive will be given a free pair of hose.

Twenty-one inches! That's how far to one side the wind moved the trailer home of Mr. and Mrs. Tom Shelby, which is parked at the Mountain View motel between Joseph and Enterprise, last Wednesday evening. A check made later indicated that the wind registered about 75 mph at the Joseph airport and was very probably higher than that at the motel.

**25 YEARS AGO**  
**Nov. 8, 1990**

Photo caption: Mervin Zollman displays the P.O.W. medal he recently received from the U.S. government. Chieftain clippings from 1945 tell of when his family was

informed he was missing in action and of his return from a Nazi prisoner of war camp.

76 percent of Wallowa County registered voters turned out to express a collective mind on candidates and measures in Tuesday's general election. Locally, Mary Grote easily defeated incumbent Bill Reynolds in the controversial district attorney race. Incumbent County Commissioner Pat Wortman received 2,120 votes to retain his seats. Most people in the county obviously hate the idea of being required by law to wear seat belts, nixing Measure 9 by a two to one margin, however the safety belt law was approved by the state as a whole.

Among freshmen at Wallowa High School recently competing in a fund raising slave sale during homecoming were: Jimmie Wood, Jeremy Quimby, Charity Warner, Tara Locken, Shawna Rundle, Jennifer Henderson, Sharon Baremore, Carrie Sheehy, Leland Bauck, Karman Tanzy, Stacy Campbell, Tony Dixon, Cory Eagan and Jamie Haganah.

**Buy Any Sub ~OR~ Salad and get a FREE cookie with coupon.**

Limit one coupon per person per order. One cookie per coupon. Valid In Enterprise Subway



212 W North St. in Enterprise 541-426-3648



## Affordable Care Act

Open Enrollment 12/1 thru 1/31  
Enroll by 12/15 for January 2016 coverage



We can answer your questions & get you enrolled. Call 541-426-4208

**BENNETT** Locally owned & operated  
INSURANCE AGENCY 616 W. North Street Enterprise

Time for a Computer Tuneup?

**J'S PLACE**  
Spyware Removal & More  
541-426-0108  
110 W. Main Enterprise

## You're Invited! 20<sup>th</sup> Annual Healthy Futures Dinner Auction

Exciting Live Auction Items!

- Sunriver luxury vacation home sleeps eight, five nights, Dr. & Mrs. Underhill
- Four Star Steak & Spa, Kalispell Tribe & Northern Quest Casino
- Wildhorse Resort weekend golf getaway
- 3 bdrm, 3 bath Depoe Bay home for one week, Dave & Sue Smyth
- Romantic getaway at Wallowa Lake Lodge w/ dinner at Vali's
- Gail Swart's famous champagne brunch for eight
- 1/2 day guided fishing trip from Winding Waters River Expeditions
- Handcrafted buckboard sleigh, wagon from Dr. Boyd
- Rustic desk & bench, rustic end table from Dr. Boyd
- Tri-Cities hockey package, from Jenni Word & Chantelle Johnson
- One year pass for two to OK Theatre concerts
- Night at the Elgin Opera House, Hospital Imaging Dept.
- Spa basket from beecrowbee & friends
- Handcrafted quilts by Shirley Snook
- Framed photograph Thunder & Rain Monochrome by David Jensen
- Super Deluxe Pendleton Package: Round Up, Golf, Wildhorse & More! Blue Mountain Pathology
- Handrafted cradle made of local woods by Clint Krebs
- Spring Lamb, cut & wrapped, ready Sept. 2016 from NP Ranch
- Two ton of alfalfa loaded onto your trailer, Collins Farms
- Ice chest filled with variety of meats from local producers, Community Bank

### Heads or Tails Game Prizes

iPad sponsored by Wheatland Insurance  
Kindle Fire sponsored by Wallowa Title Company

**Saturday, November 14, 2015**

Cloverleaf Hall, Enterprise  
Emcee Matt Kurtz; Auctioneer Jake Musser  
Silent Auction & Social Hour at 5:00 pm (note earlier time!)  
Elegant Dinner by Backyard Gardens; Bar by La Laguna  
Wine bar featuring L'ecole 41  
Live Auction at 7:30 pm

Tickets are \$60 each • To order tickets call 426.1913

Stop by the Foundation Office at Wallowa Memorial Hospital  
Or mail check made out to WVHCF to PO Box 53, Enterprise 97828

Please specify beef, chicken or vegetarian entree  
Your support is greatly appreciated!  
The Wallowa Valley Health Care Foundation



Warm up with specialty espresso drinks & more!

Auton's HOME & HEARTH  
541-432-2690

06 S. Main Street • Joseph, OR  
Mon-Sat 8-6 • Sun 10-4

**Student of the Week**

Jane Kissinger has earned a 3.94 GPA during her high school career. She is a two year foreign language student and has taken two AP English classes. She has excelled in the sciences taking Anatomy and Physics and is currently enrolled in Chemistry and Advanced Biology. Keep up the high academic pursuits, Jane.

**Jane Kissinger**  
Enterprise High School

Proudly Sponsored by  
**Community BANK**  
Joseph 432-9050  
Enterprise 426-4511  
Wallowa 886-9151

The Student of the Week is chosen for academic achievement and community involvement. Students are selected by the administrators of their respective schools.

## School reading helpers needed

Wallowa County Chieftain

Volunteers are needed for the local in-school reading program conducted by Building Healthy Families.

The long-standing program evolved from the Start Making A Reader Today (SMART) program intended to promote reading among children.

Since Building Healthy Families works closely with the teachers in each of the county's districts, the program and volunteer requirements vary. This year the program is focusing on the kindergarten level. Volunteers are asked to commit to less than one hour a week. Interested volunteers should contact Building Healthy Families at 541-426-9411.

## Wallowa County HEALTH LINE

**Wallowa Valley Eye Care**  
519 W. North Street, Enterprise  
541.426.3413  
Mon-Thurs 9 to Noon/1-5pm; Fri. 9-1

**Motivations Fitness Center**  
Keyless Entry  
Free Weights • Women's Center  
Tanning  
202 W. Main Street • Enterprise  
541-426-0313

**Marcys SKIN CARE**  
Specializing in Anti-Aging Skin Therapy  
Customized Facials  
Waxing Services, Brow Sculpting  
Body Polish-Back Facials  
High-Performance Products  
541-398-0759 | Located @ beecrowbee 01 Main Joseph

**Wallowa County Health Department**  
758 NW 1st Street, Enterprise, OR  
(541) 426-4848  
We offer services to all ages and income levels including: WIC, family planning, immunizations, flu shots, restaurant and hotel licensing, community tobacco prevention and education, chronic disease prevention. We provide equal opportunity programs.