



WALLOWA COUNTY CHIEFTAIN

Enterprise, Oregon

Issue No. 28

www.wallowa.com

October 28, 2015 \$1

MY HUSBAND WAS SCARED TO DEATH. BUT HE DIDN'T WANT ME TO KNOW.

A SURVIVOR'S TALE

Kathleen Ellyn
Chieftain
Breast cancer survivor Sherry Robb of Lostine enjoys one of her favorite activities, walking, to be followed by another, attending her children's sporting events.



Family support, attitude carried Lostine mom through breast cancer scare

By Kathleen Ellyn
Wallowa County Chieftain

In 2001, Sherry Robb of Lostine was diagnosed with breast cancer. She was 41. She was the mother of three biological children and three adopted children. She did not have the breast cancer gene.

The only symptom she had was itching. She never felt a lump. But she went to her medical professional about it.

Now, she says, she encourages people to get checked when they just "know something is not right."

See ROBB, Page A9



Community helps EHS replace gear destroyed by fire

By Kathleen Ellyn
Wallowa County Chieftain

Nike kicks in uniforms and shoes

An accidental fire destroyed the Enterprise High School (EHS) football field house on Oct. 8, taking all of the football and track gear with it.

Since then, donations have poured in and the football team returned to the field in completely new gear. The track gear will be replaced when the insurance money comes in.

Bill Hall of Joseph tapped his contacts at Nike for uniforms and shoes, and the school district ordered pads and helmets immediately, not waiting for the insurance money to come in.

"We haven't got any insurance money yet," said School Superin-

HOW TO HELP

A GoFundMe account established by Lisa Masters has raised more than \$2,100. The crowd-sourcing site can be accessed online at www.gofundme.com/kd5zssn4.

tendent Brad Roysse. "We're still trying to decide what we'll do about the building. We've not awarded a contract for building."

Roysse has been dealing with a "frustrating" issue with the insurance that is causing the delay.

"Our insurance company wants us to go with a big company who can take repairing the field house from ground zero to completion," Roysse said.

See FIRE, Page A9

ONE GREAT PUMPKIN



This giant pumpkin grown by Ross Chesley on Hurricane Creek Road currently graces the front porch of the Joseph Visitor Center. Chamber of Commerce Member Scott Rushton said the pumpkin has become a local tourist attraction with many people being photographed sitting on or standing next to the behemoth.

Steve Tool/Chieftain

Scot Heisel named Chieftain editor

New leader will look to expand coverage through paper's website and social media

Wallowa County Chieftain

A Western Montana native with 15 years of experience as a professional journalist has joined the Wallowa County Chieftain as the newspaper's new editor.

Scot Heisel of Missoula, Mont., recently moved to Enterprise and began work Oct. 21. He replaces former Chieftain Editor Rob Ruth, who left the newspaper in September.

"I'm so happy to live in such a beautiful and friendly part of the Northwest," Heisel said. "The landscape reminds me a lot of Montana, and everyone I've met so far — particularly the Chieftain staff — has made me feel right at home."

Heisel, 44, earned a bachelor's degree in English Literature at the University of Montana in 1994. He later

studied journalism for two years as a graduate student at UM before landing his first newspaper job at The Eastside Journal in Bellevue, Wash., in 2000.

Heisel returned to his hometown in 2001 to work as a copy editor and page designer at the Missoulian newspaper. In 2004 he took a job with The Daily News in Longview, Wash., where he worked until last July. He most recently served as features editor as well as assistant managing editor in charge of digital publishing.

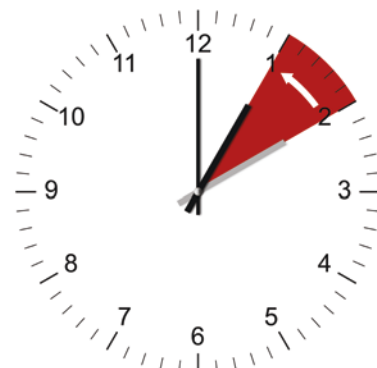
"I've spent the last seven years exploring all the new ways to serve readers through websites and social media, and I look forward to utilizing that experience in my new role in Wallowa County," he said.



Scot Heisel is the new editor of the Wallowa County Chieftain.

See HEISEL, Page A9

FALL BACK



Daylight Saving Time ends on **Sunday at 2 a.m.** when clocks are turned backward one hour to **1 a.m.** Sunrise and sunset will be earlier, which means more light in the morning.



7 29467 50001 3