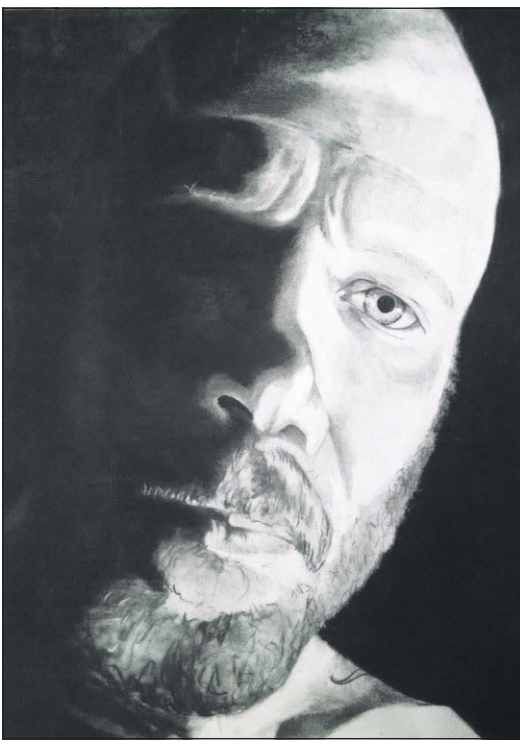


This larger-than-life visage is among 20 works by Lyle Witherrite exhibited this month at the Josephy Center.



Courtesy photo

Witherrite featured at 'Hard Luck Seven'

JOSEPH — An opening reception for the "Hard Luck Seven Art Show," a month-long exhibit showcasing works by Imnaha artist Lyle Witherrite, is scheduled Friday, Sept. 4 at 7 p.m. at the Josephy Center for Arts and Culture.

This special art exhibit is a collection of eclectic ideas from Witherrite, whose work encapsulates an otherwise unknowable world through enormous three-dimensional metal artwork, larger-than-life drawings, and fantastical multi-media works. Each piece extends and challenges the boundaries of "normal" by size, appearance and subject matter.

Enter Lyle's world. It will

be like no other art exhibit that has been seen at the Josephy Center. On Thursday, Sept. 24 at 7 p.m., Lyle will speak at the "Live and Up Front" at the Center. He will talk about self-taught process and the ideas that lay behind the artwork.

This is Witherrite's first solo exhibition. He has been working as an apprentice for Chuck Fraser's Ironworks. He has trained under Fraser as a blacksmith and welder but he's largely a self-taught artist. Witherrite will be presenting over 20 works that range from paper to metal.

The exhibit, which runs through Oct. 2, is supported by a grant from the Oregon Cultural Trust.

REQUEST FOR FIRE IMAGES



Courtesy photo/Paul Tagano

Wallowa County Emergency Services Director Paul Karvoski would like copies of any photos you may have gotten of the Grizzly Bear Complex Fire for historical purposes. Full resolution photos are preferred. Cell phone pics on cells with good megapixels are great. But any pictures you've taken are welcomed. Email your photos to wcdes@co.wallowa.or.us or call Karvoski at 541-398-0227. The picture above is of the fire near the Grande Ronde in the Troy area shortly after it "blew up," Aug. 18.

A barn raising of a different kind

By Kathleen Ellyn
Wallowa County Chieftain

More than 190 people showed up at the Wallowa Resources 7th Annual Barn Dance, Aug. 29, at the Blue Barn on Tenderfoot Valley Road in Joseph, and raised over \$20,000 for the Youth Scholarships for both the WREN (camping, backpacking and exploring camps) and HAWK (paid internships for high school juniors and seniors) programs.

Wallowa Resources, located in Enterprise, is dedicated to the mission of developing local partnerships and creating local jobs and attendees of the dance were an example of the wide variety of individuals who work together to create opportunities in Wallowa County.

Ranchers, landowners, forest contractors, artists and musicians from both Washington



Courtesy photo

The crowd begins to gather for the social hour at the 7th Annual Wallowa Resources Barn Dance and fundraiser, Aug. 22.

and Oregon came together for a good time and to support the not-for-profit organization's work.

In the process they dined on food prepared by Backyard Gardens and Zane Anderson, danced to music by Henry Kinsley and his band, and bid on products and prizes donated from a wide variety of local businesses and individuals.

Susan Badger-Jones, Eastern Oregon outreach manager for Energy Trust of Oregon, who regularly attends the annual barn dances, is an example of the partnerships Wallowa Resources develops for the benefit of local individuals. Badger-Jones works with local power customers interested in energy efficiency and innovations — such as cash-back incentives for small hydro projects and solar arrays.

When these projects are undertaken, Wallowa Resources "are the local folks on the ground," she said. "Wallowa County is a really exciting area of work for this."

In all, the event raised over \$68,000, which will be used to continue the many programs Wallowa Resources operates.

Over the past 19 years, Wallowa Resources has in-

vested more than \$20 million into Wallowa County for land stewardship, job creation and education. Its programming supports approximately 58 full-time jobs annually. It has leveraged \$18 in external funding for every \$1 of local support.

Examples of Wallowa Resources work is the restoration of the Upper Joseph Creek project (2002-2007) during which restoration of the property generated over \$6 million in jobs and product value and reduced wildfire threats to the timber while improving the property.

Notably, Wallowa Resources continues to work toward the goal of establishing a biomass market for 100,000 tons of locally produced forest products. In 2014 they reported that over 200,000 tons of biomass were utilized. Several new projects are in development and recent changes in the production of biomass at the Integrated Biomass Resources plant in Wallowa have improved sales opportunities.

Wallowa Resources remains dedicated to a mission of achieving a "triple bottom line outcome" that equally values stewardship, education and innovation — for the benefit of Wallowa County.

For more information on Wallowa Resources, visit wallowaresources.com.

Powerful Tools for Caregivers

Starting Tuesday, September 8th,

Community Connection of Wallowa County will be sponsoring a Powerful Tools for Caregivers workshop. This six week workshop will be held on Tuesdays from 10:00 am - 11:30am at the Wallowa Senior Center, 204 Second St. in Wallowa. This workshop is geared toward providing information to Family Caregivers on the necessity of caring for themselves, so they do not become ill or burnt out as a result of the care they provide. This is the second Powerful Tools for Caregivers workshop offered by Community Connection of Wallowa County. The first workshop was held in February in Enterprise and was a huge success.

If you are interested in participating in this workshop or would like more info, please contact Connie at 541-426-3840 or Rochelle at 541-963-3186.



COME PEDAL THE RAILS WITH US!



All Day or Two Hour Guided Adventures

Open Thru Oct 4th



Fri - Mon, 8am to 4pm
304 N Main, Joseph Oregon 97846.
Departures at 9am, 12pm and 3pm
Reservations advised.
Call 541-910-0089
Email jbrailriders@gmail.com
www.jbrailriders.com

New Arrivals Daily Children's Clothing

Upcycled • Thrift • And more!



Wynken Blynken and Nod
3 S. Main St., Downtown Joseph • 541-432-KIDS

Winding Waters Clinic



OHSU Resident
Whitney Roper, MD
8/25/15- 10/2/15

Hours:
Monday - Friday
7:00am to 7:00pm
Saturday
9:00am to 1:00pm
603 Medical Parkway
Enterprise, OR 97828



See Philip Ruud at Wallowa Valley Eye Care (Dr. Baileys Office) September 9th

519 W. North St.
Enterprise, OR 97828
Call 800-678-3155
for appointment



Ruud's
HEARING AID
SERVICE



Compassionate | Convenient | Confidential



The Destination for All Your Outdoor Summer Needs!

Stop in and check out our selection of sun care needs, first aid items and allergy treatment and prevention

Give us a call today!
541-426-7455
306 W. North Street, Enterprise



Improved Diagnostics, Lower Radiation...

We offer a state-of-the-art, CT Scanner to better serve you

- 64 slice capabilities means improved diagnostics
- Faster, so you spend less time on the table
- New technology reduces amount of radiation

If your physician orders a CT Scan, rest assured you are getting the best technology on the market...



Wallowa Memorial Hospital
We treat you like family

601 Medical Parkway, Enterprise, OR 97828 • 541-426-3111 • www.wchcd.org
Wallowa Memorial Hospital is an equal opportunity provider and employer