

Road closures updated

Oregon Department of Transportation (ODOT) reminds travelers that construction continues on the southern 18 miles of Forest Service Road (FSR) 39. This section will remain closed and gated until June 15 from the junction of FSR 39 and FSR 66 to Highway 86.

FSR 66 is currently clear of snow and ice to Twin Lakes. Beyond Twin Lakes the road is blocked by four feet of deep snow. FSR 39 is clear of snow and ice, but is not maintained until June 15. Rocks remain in the roadway and travelers are advised to use caution when traveling forest roads.

Contractors will begin applying a pavement chip seal along the Wallowa Lake Highway (OR 82) between Joseph and Wallowa in June. Over next couple of weeks construction

signs will be installed along the route and durable paint will be removed from the pavement in Enterprise and Joseph.

Chip seal work is expected to begin in Joseph around June 1 with crews moving west towards Wallowa (no work June 5 due to car show in Joseph). Travelers can expect minor delays during this portion of the work.

Once the chip seal work begins, expect delays of up to 20 minutes, traffic controlled by flaggers and pilot cars, loose rock on the roadway and reduced speeds. Local residents with driveways connecting to OR 82 may also experience temporary impacts as the operation moves past their property. Seal work is expected to be completed by mid-June, with other work completed by the end of the June.

HOOTENANNY DRAWS CROWD



Steve Tool/Chieftain

The lowdown at the hoedown: All the musicians who performed at the Wallowa Valley Musical Alliance Hootenanny took the stage for an encore performance of "Hey Good Lookin'" at the Enterprise Odd Fellows Hall on May 17. The event raised around \$1,500 for the Music Alliance.

LOOK TO US FOR YOUR BASIC PHONE SERVICE

TDS Telecom offers the following local exchange telecommunications services to all customers throughout its serving area:

- Voice grade access to the public switched network;
- Local exchange service;
- Dual tone multi-frequency signal;
- Single party service;
- Access to emergency service;
- Access to operator services;
- Access to interexchange service;
- Access to directory assistance; and
- Toll blocking without charge to qualified low income customers.

Below are the monthly rates for local exchange service:

Exchange	Residential Monthly Rate*	Business Monthly Rate*
Asotin	\$17.20	\$31.20
Anatone	\$16.00	\$21.20

Monthly discounts are available to residential customers meeting certain low income criteria.

For more information, contact TDS Telecom toll-free at 1-888-CALL-TDS.



*Prices above do not include charges for long distance, operator services, Directory Assistance, 911 emergency service or other state and federal taxes. 163788WAASOT/4-15/8974

Community Calendar: Ribbon-cutting

Thursday, May 21

Open House, Ribbon-Cutting & Barbecue celebrating completion of the City of Wallowa Water System Improvement Project, 11 a.m. to 12:30 p.m. at Wallowa City Hall, 104 N. Pine. Ribbon-cutting takes place at 12:45 p.m. at newly completed well pump station, 3rd & S. Douglas.

Jeanie Johnson's 101st birthday party, 2 p.m. at Wallowa Valley Senior Living. No gifts, please. In lieu of gifts, people are encouraged to give to the Wallowa County Humane Society.

Friday, May 22

Wallowology presentation

by Nick Lunde: "Fire in Today's Changing Landscape," 7 p.m. at Wallowology, 508 N. Main St., Joseph.

How fire has shaped the Wallowa country; human influences; present day fire management; adapting to climate change; and possible scenarios for the upcoming fire season.

May 23-24

Work party at Flora School, 9 a.m. to 4 p.m. Saturday and Sunday. Painting and other chores. No skills needed. Tools provided. Wear grubby clothes. More info: Vanessa, 541-828-7010.

Saturday, May 23

Lathrop Reunion, Enter-

prise Senior Center. Doors open at 10:30 a.m.

Wallowa County Farmers' Market annual Spring Planting Fest, 10 a.m. to 2 p.m. in downtown Joseph. Plants, fresh vegetables, recipe demonstration, children's activities, vendors, live music by Enterprise Elementary 4th & 5th grade Recorder Class, followed by Al Bell.

Sunday, May 24

Memorial Day Breakfast, annual fundraiser for Wallowa Senior Center, 7 to 11 a.m. at Wallowa Senior Center. All-you-can-eat pancakes, \$7 adults, \$4 kids. More info: 541-398-1541.

Monday, May 25

Wallowa Mountain Open Horse Show Series, Enterprise Fairgrounds. Continues on July 18. Array of classes for participants, spectators. For more info, entry form, or to volunteer, please email wewmohs@gmail.com

Tuesday, May 26

"The Soroptimists and Women's Volunteer Groups of the '50s," with some of our local Soroptimists, 12 noon at the Joseph Center, Joseph. Free. Bring your bagged lunch.

Wednesday, May 27

Troy School Potluck/Pic-

nic, 5 p.m. End-of-year program.

Thursday, May 28

Seth and Steve Kinzie's 2nd Annual Joseph Concert, 7 p.m. at the Joseph Center, \$10.

Friday, May 29

A community celebration for Older Americans Month, 1 to 5 p.m. at Community Connection Enterprise Senior Center. Information and refreshments.

Saturday, May 30

Triple 6 Golf Tournament, 8 a.m. signup, 9 a.m. tee-off, Alpine Meadows in Enterprise. Grab a friend and play!

U.S. Sen. Ron Wyden Town Hall meeting, 3:30 p.m. at Enterprise Senior Center, 702 NW First St.

Sunday, May 31

Cale Moon in concert, 4 p.m. at OK Theatre, Enterprise. Fundraiser for Enterprise Cemetery.

June 5-7

Wallowa Valley Festival of Arts (33rd annual), downtown Joseph. Three-day juried show includes gala Friday night opening, art demos, workshops, auctions and sales. Also a popular "Quick Draw" event. More info: see wallowavalleyarts.org.

Saturday, June 6

Flora Community Yard Sale, starts at 9 a.m., downtown Flora across from Grange Hall.

Thursday, June 11

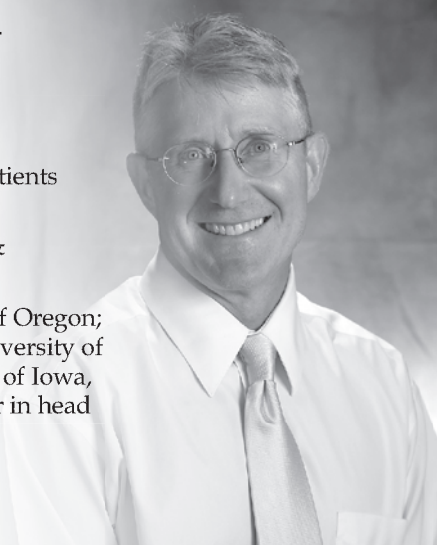
Poetry reading by Devin Becker, 7:30 p.m. at Fishtrap House, 400 E. Grant St., Enterprise. Free of charge. Becker will read from his collection "Shame | Shame," winner of the A. Poulin Jr. Poetry Prize.

The Community Calendar lists fundraisers, free local events and those with a nominal fee organized by non-profit organizations. Submit information to calendar@wallowa.com. Deadline is 5 p.m. Friday. To promote for-profit events, contact sales representative Brooke Pace at bpace@wallowa.com.

Announcing New ENT Services!

- Dr. Gerry Funk, Otolaryngologist, will see patients in Enterprise
- Offering general ear, nose, throat care; head & neck oncology
- Education: undergraduate work University of Oregon; MD University of Chicago; residencies at University of Southern California; fellowship at University of Iowa, where Dr. Funk served as a training professor in head & neck oncology & surgery.

Ask your physician for a referral today!



Wallowa Memorial Hospital
We treat you like family

601 Medical Parkway, Enterprise, OR 97828 • 541-426-3111 • www.wchcd.org
Wallowa Memorial Hospital is an equal opportunity employer and provider.

MEDICARE BIRTHDAY RULE



If you have a Medicare Supplement Plan you have 30 days after your birthday to compare & apply for a new Supplement Plan.

Call Kathleen or Heather TODAY to discuss your options for a lower Medigap premium.

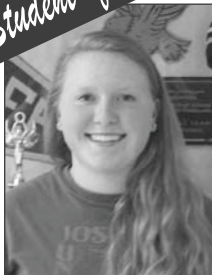
541-426-4208

Featuring Stonebridge Medicare supplements



Locally owned & operated • 616 W. North Street, Enterprise

Student of the Week



Kendal Kreutzer
Joseph Charter School

Kendal Kreutzer is a junior at Joseph Charter School who recently received the honor of "Most Improved Student" at our 2015 Academic Awards. She is actively involved in FCCLA and plays volleyball and softball. Kendal takes Advanced Biology and Spanish and does a work study at Valley Bronze where she has been given rave reviews. The teachers and administration want to congratulate Kendall on being a great part of our student body.



Proudly Sponsored by

Joseph 432-9050
Enterprise 426-4511
Wallowa 886-9151

The Student of the Week is chosen for academic achievement and community involvement. Students are selected by the administrators of their respective schools.

EARLY ADVERTISING DEADLINE

12:00PM Thursday May 21st

Chieftain office will be closed Monday, May 25 for Memorial Day.



Rhonda Shirley DEDICATION / RETIREMENT OPEN HOUSE

Sunday, May 31st 4:00-6:00 • Joseph Charter School in the "Rhonda Shirley" Practice Facility
No gifts please