



Cubs bring bats, not gloves to Echo

By Steve Tool
Wallowa County Chieftain

ECHO — The Enterprise Cubs left Echo hungry, after losing both ends of a doubleheader at Echo/Stanfield on May 8. This, after out-hitting the Echo team in both

games. The Cubs lost the opener 11-8 while racking up an impressive 10 hits against Echo. Unfortunately, Echo's eight hits were augmented with help from the Cubs in the form of five errors, at least eight walks served up and six ladies left on base. Natalie Williams

started for the Cubs, pitching four innings with Madison Plew coming on in relief.

The second game told the same story with the Cubs out-hitting Echo 13-11 in a 20-12 losing effort. The Cubs committed seven errors and left seven ladies-in-waiting on

base as well.

Plew pitched the first three innings with Williams coming on in relief.

Cubs Coach Cliff Conrad pointed to the bat of Plew as one of the lone bright spots for the Cubs. Plew went 2-for-5 at the plate with

a homer and four RBIs.

"Everybody hit well, but we really need to work on our defense to win games," Conrad said.

The losses left the Cubs with a 6-6 league record and an 8-8 season record. The Cubs next play Vale at home on May 15.



Courtesy photo/Jenny Reinhardt
Enterprise freshman Riley Gray starts her 400-meter race Thursday, May 7, in Elgin. She finished fourth.

Track teams tune for district

Local high school track and field athletes had their final tune-ups May 7 and 8 before their district competitions scheduled later this week. While Joseph's team took part in both the Baker Invitational on Friday and the much smaller ICUE meet the previous day in Elgin, the Enterprise track and field squad, which also includes athletes from Wallowa, only made the Thursday trip to Elgin.

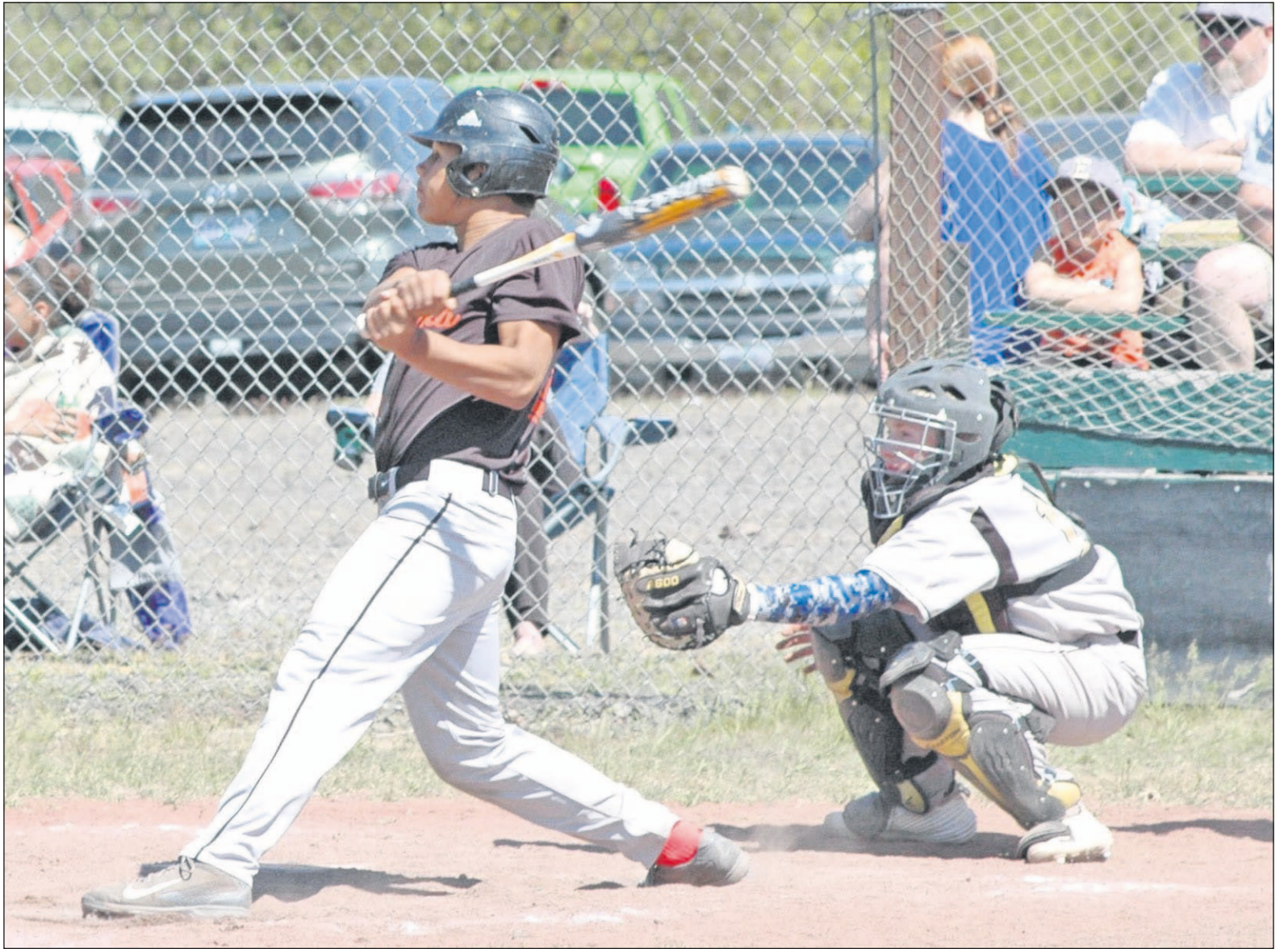
Among Joseph's higher individual placers at Elgin were Courtney Bailey, who won the 3000 meters, Alexis Sykora, second in the 100 meters, and Karianne Zollman, second in the javelin. A standout performer for the Eagles at Baker City was high jumper Ally Cooney, who came in second.

Enterprise had a number of outright winners at the ICUE: James Madsen in the 200 meters, Jacob Everts in the 1500, Ermano Laici in both the 110 and 300 meter hurdles, Blaze Lepper in the shot put, Daniel Kohlhepp in discus, Micah Fuller in javelin, Rocky Davidson in the triple jump, Stacy Douglass in the 100 meter hurdles, Jolene Ginther in javelin, and high-jumper Sarah Madsen.

Joseph's athletes return to Baker City on Thursday, May 14, for the 1A Special District 4 championship meet. Enterprise travels Friday, May 15, to Grant Union High School in John Day, site of the Wapiti League's championships.

See TRACK, Page A10

EAGLES FEAST AT WALLOWA

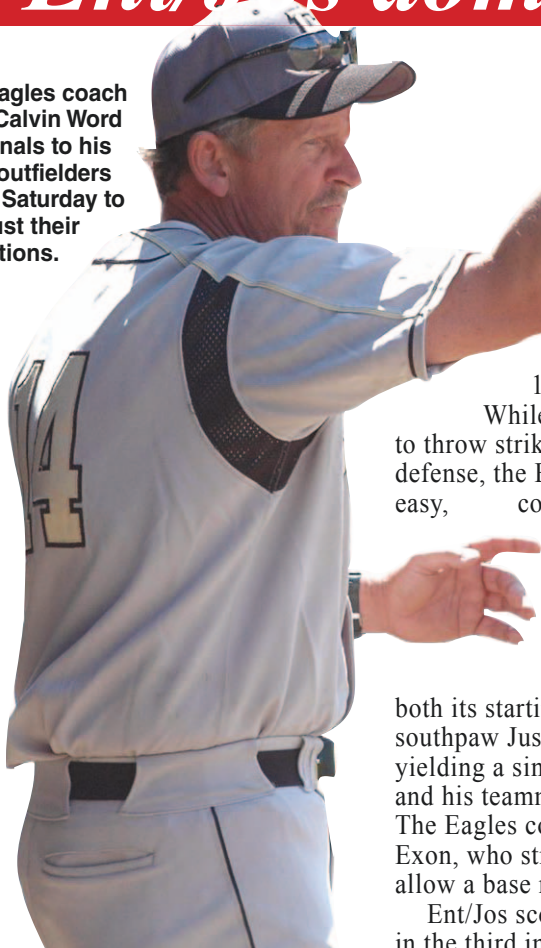


Rob Ruth/Chieftain

Wallowa hitter Micah Fuller watches a fly ball he has just launched over the Ent/Jos right fielder's head in the bottom of the first inning of Saturday's second game. The ball lands shy of the fence for a double, setting up a second- and third-base threat for the Cougars, who couldn't get those runners home with two out. There were no further scoring opportunities for them this day.

Ent/Jos dominates in doubleheader

Eagles coach Calvin Word signals to his outfielders Saturday to adjust their positions.



Rob Ruth/Chieftain

By Rob Ruth
Wallowa County Chieftain

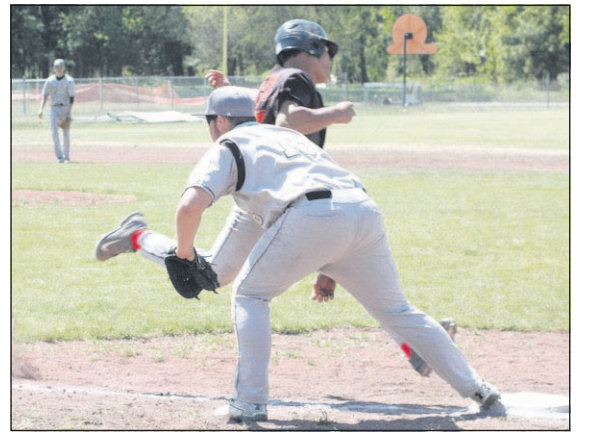
WALLOWA — Enterprise/Joseph's steadily improving baseball team took full advantage of Wallowa's depleted pitching corps Saturday, winning both ends of a doubleheader by lopsided scores, 13-1 and 23-0.

While the host Cougars were struggling to throw strikes and to otherwise execute on defense, the Eagles were making it all look rather easy, committing few miscues and blanking

Wallowa from the second through sixth innings of the first game, and shutting the Cougars out in the five-inning nightcap (shortened by the 10-run rule).

Ent/Jos got complete games from both its starting pitchers. In game one, it was southpaw Justin Exon who got the call. After yielding a single earned run in the first inning, he and his teammates slammed the door on Wallowa. The Eagles committed only one error in the game. Exon, who struck out 11 and walked two, didn't allow a base runner in the last four innings.

Ent/Jos scored one run in the first inning, five in the third inning, three in the fourth, and finally four in the sixth.



Rob Ruth/Chieftain

Eagles first sacker Devin McQuead records an out in the sixth inning of the Eagles' 13-1 victory over the Cougars in the first game of a doubleheader May 9 in Wallowa. Ent/Jos coach Calvin Word noted that McQuead played flawless defense throughout the day, in addition to having a big day at the plate.

In game two, the Eagles jumped out to a 2-0 lead in the first inning. Leadoff man Tate Olsen was hit by a pitch, reached second base on an error, stole third base, then came home easily on a double by Sam Beckman, who was himself wild-pitched to third, placing him in a convenient location to come home on Will McCadden's groundout to third.

See BALL, Page A10

Wallowa County sunrise and sunset May 14 - May 20 (from the U.S. Naval Observatory)

Thursday, May 14	Friday, May 15	Saturday, May 16	Sunday, May 17	Monday, May 18	Tuesday, May 19	Wednesday, May 20
Rise 5:20	Rise 5:19	Rise 5:18	Rise 5:17	Rise 5:16	Rise 5:15	Rise 5:14
Set 8:11	Set 8:13	Set 8:14	Set 8:15	Set 8:16	Set 8:17	Set 8:18

Best Brake Value PROMISE

- ✓ Professionally Trained Technicians
- ✓ Premium Quality Parts
- ✓ Over 30 Years Experience
- ✓ Best Brake Warranty

FREE BRAKE INSPECTIONS • FREE ESTIMATES • SAME DAY SERVICE
(ON MOST VEHICLES)

Tires LES SCHWAB

www.LesSchwab.com

READY FOR SUMMER TRAVEL?

GREAT BUY!
STARTING AT
39.99

OUR BEST ON SALE

ULTRA Z900

STARTING AT
115.77

802 NW 1st • Enterprise • 541.426.3139