

Bomb Blast Or Natural Disaster Have No Terrors For Bend Family

Nelson Shelter Ready for Siege

By DON H. HIGGINS
Bulletin Staff Writer

The usually sunny high plateau of Deschutes county is one of the safest places in the world today for a home. The same is generally true of Jefferson and Crook counties which combine with Deschutes to compose the tri-county area of Central Oregon.

People here sleep peacefully with no deepset fear of flood, earthquake or burning streams of molten lava from volcanic eruption.

Hurricanes are unknown in local history. Once in a dozen moons a little twister of wind called a "Devil duster" tears up a few acres and flattens some farm buildings. There are no tornadoes. Now and again lightning strikes but rarely kills. Hail does a bit of damage.

As for flood, it cannot happen to the people along the Deschutes river. Writer Phil Brogan has often pointed this out, and in one illuminating article in The Bend Bulletin he told why, in detail. The porous lava of high levels and the volcanic soils below absorb excess water like giant sponges before it can overflow the banks.

There has been no widespread pestilence, no famine in this favored area of Nature, and modern science has brought further protection from such disasters.

Shangri-la, the mythical haven of the late President Franklin Delano Roosevelt, had nothing on Central Oregon for mass safety from bodily harm.

But there has come from far off a tiny menace to this land of health and freedom from disaster. It is a disaster threat gradually growing larger, more ominous — a danger of annihilation by the hand of man.

An atom bomb disaster is the threat.

The people of Central Oregon have been warned again and again and again, as the late FDR used to say about various things. He pronounced it like two words, "a gain and a gain and a gain." Remember?

With few exceptions the people of Central Oregon have ignored the warnings. Phooey! It will never happen here. Bombs cost cash money. No one would waste one in this area.

The people of Cameron parish in southern Louisiana in June shrugged off repeated pleas from officials to get out of there. The effect of that brushoff was hundreds of bodies rotting in the humid swamps after Hurricane Audrey swept them to death.

Some of them got out. They are living today — and mourning the loss of lifelong friends and neighbors.

There are a few families hereabouts who are preparing to live through deadly radioactive fallout from a bomb blast anywhere within hundreds of miles of Bend, Redmond, Prineville or Madras.

One of these families is that of Mrs. Kathryn Nelson, who lives with two of her children in a white cottage at 502 Lava road in Bend. Mrs. Nelson has headed the warning.

If an atom bomb strikes Portland tomorrow or even a nearer



PREPARED AGAINST DISASTER — Mrs. Kathryn M. Nelson is shown in the bomb shelter of her cottage at 502 Lava road, well prepared with food, water and communication for herself and her two children in case of heavy radiation fallout or other disaster. (Bend Bulletin Photo)

place in Central Oregon that is a target on the Soviet list known to the secret intelligence forces of our government. Mrs. Nelson will go into her cellar with her children. This will be done after they had taken a quick bath to wash off any immediate contamination.

Her home's electric power and water supply will be cut off. She will dole out the 50 gallons in her hot water heater tank during the days of entombment.

Lack of electricity will not dismay Mrs. Nelson. Her 11-year-old son, Jimmy, has rigged up a bike lamp to a storage battery. The basement retreat will be lighted. She has a camp stove and fuel, blankets, coats and sleeping bags.

Jimmy, too, has assembled a portable radio with a walkie-talkie type antenna. Mrs. Nelson will be able to hear what the government is broadcasting in the outside world. She will learn through this portable radio when it is safe to go outside again.

There will be days, perhaps even weeks, of no possible way to get food except what she has provided in advance. And Mrs. Nelson has provided enough to last for weeks, if need be. She has four 25-pound cans containing white flour, wheat flour, spaghetti and whole grain wheat.

There are powdered milk, beans, meats and fruit in smaller containers. Each parcel has been wrapped and sealed in plastic bags, inside and out if possible. The big cans have been prepared by manufacturers especially for atomic blast emergency.

Mrs. Nelson will wash all of her food containers in a solution of chlorox or purex when she enters the cellar. She keeps her refrigerator full of food and will be able in a short time, as she has been told by radio, to get it. Refrigerators

are fairly safe from fallout contamination.

One fine day Mrs. Nelson's portable radio will sound the All Clear. Like other provident souls she may remember John Godfrey Saxe's lines in the "Old Man's Motto":

Whatever be thy fate today
Remember, "This will pass away."

Mrs. Nelson and her children will emerge and take a look around. She hopes she will find her friends and fellow citizens alive, and not strewn dead and rotting over the streets and lawns.

But in the present state of indifference and helplessness, here is what the Pentagon experts estimate will happen if a fleet of Soviet bombers strikes the nation now:

Killed or wounded in the U.S. — 56,000,000 people.
Blasted into a mass of rubble and blood: 69 cities.

For five years the Committee on Disaster Studies of the National Research Council has been studying the reaction of the American public to warnings. It has learned positively that —

... most Americans won't listen to warnings. They just won't admit to themselves that something awful may happen to them.

The people of Waco, Texas, scoffed at a warning broadcast by the U.S. Weather bureau that a tornado would strike their city. It killed 114 of them.

Rio Grande Valley residents refused to get out of the Eagle Pass area when repeatedly warned of an approaching flood. One hundred and thirty were drowned.

Cameron parish people poooh-pooohed official warning that Hurricane Audrey would strike. They died by the hundreds.

There are scores of other instances. "Now hear this!" as the tough

Champ Joe Brown Expecting Win

CHICAGO (UP) — Lightweight champion Joe Brown rates his TV opponent tonight, Joey Lopes, as a tough boy, but he thought today he might ring up the 28th knockout of his career.

"I won't have to look for him," Brown said. "He'll be there. So if I can nail him, I'll knock him out."

Brown, who has won 65 battles, lost 14 and drawn 8, will not risk his title in the 10-round bout, since it is an overweight match. He expected to weigh about 137 and Lopes, 29, expected to weigh 133½.

"They tell me Lopes has never been knocked out," Brown said, "and I know he's a good rough tough fighter. But he's a club fighter. When I fought (Orlando) Zulueta, he'd never been knocked off his feet, so tonight I'm going to try to establish another first and finish Lopes."

skipper of the Mister Roberts ship was wont to bellow: GET READY. YOU DON'T NEED TO DIE. YOU DON'T EVEN NEED TO GET HURT. And it will not cost you much cash money to protect yourselves.

If you haven't saved previous printed instructions, write to the Federal Civil Defense administration for the pamphlet called "Home Protection Exercises" for your family. The address is Superintendent of Documents, U.S. Government Printing Office, Washington 25, D.C. The price is 15 cents.

Persons who have had no farm experience, yet want to buy a piece of ground, may want to consider how country life differs from living in an urban area. Many people who live in town are frustrated farmers. If they lived on farms in childhood, perhaps they yearn to get back on the land. If they have never lived in the country, very likely they need professional guidance in selecting a plot that they can handle. The size of the farm depends upon the type of country living they desire.

There are four main categories that may be considered. These are:

1) A country home with little or no farming. Such a location might include a yard for outdoor living, a place for flowers, and even a small garden. The house might be located on a tract of land the size of a city lot or be set in a wooded or native area.

2) A country home with space for producing some of the family food supply. One-half to one acre may provide space for vegetables, fruits, and small animals such as chickens and rabbits. If you wish to raise larger animals for milk or meat, plan to have at least two or three acres for pasture and winter feed.

3) A country home, family food supply, and some income from the sale of products. Small farms are usually less efficient in production, so money actually received from the sale of products on the average part-time farm supplies only a small part of the family income. Twenty-five acres is considered by some experts to be the maximum amount that a man or a couple can handle and still have a job or jobs away from home.

4) A small farm as the first step toward a full-time farm. Some families buy a small farm with the hope of expanding it in time to a full-time farm. However, most small farms cannot satisfactorily be expanded to a full-time operation. If a full-time farm is the goal, careful planning of the future possibilities for the place you are considering is necessary. It may be necessary to buy additional land, or move to another farm at a later date.

A 40-acre farm is usually too small for a full-time operation and too large for a spare-time hobby. Some part-time farmers who like to have a large expanse of ground around them solve the problem by renting pasture or hay land to professional farmers in their neighborhood. Many take a fling at farm life and later return to town.

Practical Pointers Given to City Dwellers Planning Life on a Farm

Persons who have had no farm experience, yet want to buy a piece of ground, may want to consider how country life differs from living in an urban area. Many people who live in town are frustrated farmers. If they lived on farms in childhood, perhaps they yearn to get back on the land. If they have never lived in the country, very likely they need professional guidance in selecting a plot that they can handle. The size of the farm depends upon the type of country living they desire.

There are four main categories that may be considered. These are:

1) A country home with little or no farming. Such a location might include a yard for outdoor living, a place for flowers, and even a small garden. The house might be located on a tract of land the size of a city lot or be set in a wooded or native area.

2) A country home with space for producing some of the family food supply. One-half to one acre may provide space for vegetables, fruits, and small animals such as chickens and rabbits. If you wish to raise larger animals for milk or meat, plan to have at least two or three acres for pasture and winter feed.

3) A country home, family food supply, and some income from the sale of products. Small farms are usually less efficient in production, so money actually received from the sale of products on the average part-time farm supplies only a small part of the family income. Twenty-five acres is considered by some experts to be the maximum amount that a man or a couple can handle and still have a job or jobs away from home.

4) A small farm as the first step toward a full-time farm. Some families buy a small farm with the hope of expanding it in time to a full-time farm. However, most small farms cannot satisfactorily be expanded to a full-time operation. If a full-time farm is the goal, careful planning of the future possibilities for the place you are considering is necessary. It may be necessary to buy additional land, or move to another farm at a later date.

A 40-acre farm is usually too small for a full-time operation and too large for a spare-time hobby. Some part-time farmers who like to have a large expanse of ground around them solve the problem by renting pasture or hay land to professional farmers in their neighborhood. Many take a fling at farm life and later return to town.

Oregon's Tax Structure Bad

PORTLAND (UP) — Owen R. Cheatham, president of the only Portland-based firm that is listed as one of the nation's 500 biggest corporations, said here Monday "stinks," but he predicted a revival for the lagging lumber industry anyway.

Cheatham, president of the Georgia-Pacific lumber corporation, commented at a news conference that "Oregon's tax structure is so bad eventually it will have to be changed. It's the worst in the United States." It definitely is a handicap to economic growth, he said.

Cheatham added that Georgia-Pacific is in Oregon "because the timber is here." He predicted that the new FHA down payment requirements should boost new housing starts back above one million next year and he expects the 1955 boom to return by 1958.

Despite general lethargy in other sections of the industry, Georgia-Pacific last year reported increased sales and profits and Cheatham expects sales of 150 million dollars this year.

He said the firm's planned expansion would emphasize greater utilization of timber products and cited the new kraft paper mill due to go into production Jan. 1 at Toledo.

Georgia-Pacific now owns 250,000 acres of Oregon timberland and Cheatham called western Oregon "the best timber-growing area on the face of the earth."

There are 25 farms in Deschutes county that each sell more than \$25,000 per year in crops or livestock.

Plagued Day And Night with Bladder Discomfort?

Such a common thing as unwise eating or drinking may be a source of mild, but annoying bladder irritations—making you feel restless, tense, and uncomfortable. And if restless nights, with nagging backache, headache or muscular aches and pains do to over-exertion, strain or emotional upset, are adding to your misery—don't wait—try Doan's Pills.

Doan's Pills have three outstanding advantages—act in three ways for your speedy return to comfort. 1—They have an easing soothing effect on bladder irritations. 2—A fast pain-relieving action on nagging backache, headache, muscular aches and pains. 3—A wonderfully mild diuretic action thru the kidneys, tending to increase the output of the 15 miles of kidney tubes. So, get the same happy relief millions have enjoyed for over 60 years. Ask for new, large, economy size and save money. Get Doan's Pills today!

Quality Yardgoods

COST LESS AT

Newberrys

YOU ALWAYS FIND MORE IN A NEWBERRY STORE

BUY NOW FOR BACK-TO-SCHOOL

It's easy to make Newberry's headquarters for all your sewing needs! Our selection is chock full of the newest, smartest fabrics, colors and designs. Our prices are keyed to save you money, every time! Come in today and see!

Reg. to 79¢ yd. Fabric Assortment
Assorted cottons, drip dris, plisses, sheers, solid broadcloths and kitchen prints. Fast colors in stripes, prints, plaids, checks and solids. 32" to 36" widths. **27¢ yd.**

Printed Outing Flannel
First quality, printed outing flannel in a wide, wonderful array of new Fall colors. 36-inch width in Juvenile prints, dots, checks and plaids. Hurry for this buy! **44¢ yd.**

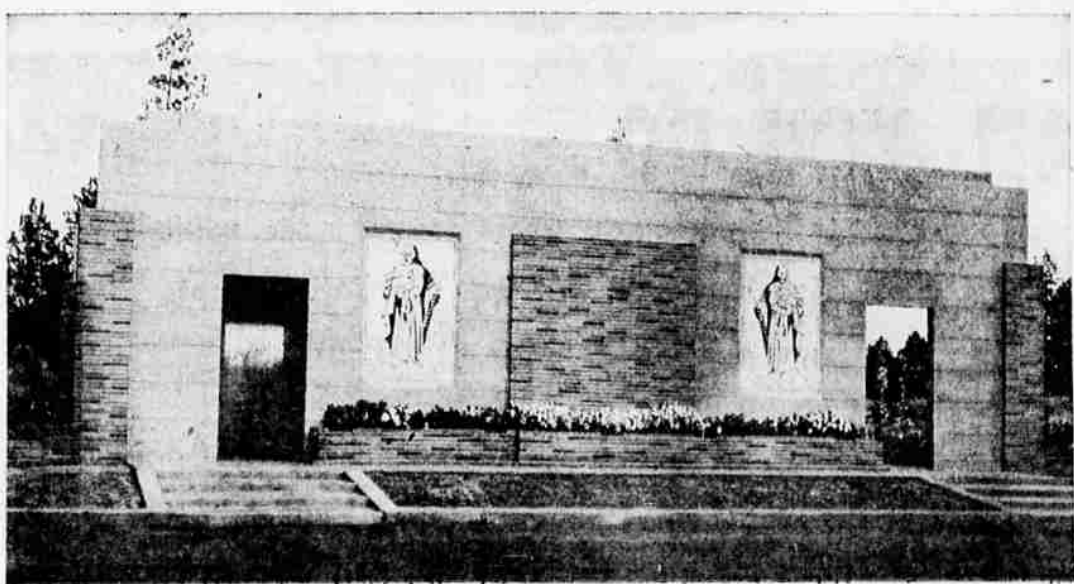
New Suede Flannel Yardgoods ..
Choose from plaids, patterns, stripes and checks in new lovely Fall colors. All first quality and sanforized. Ideal for shirts, robes, skirts and jumpers. Large selection! **49¢ yd.**

42" Pinwale Corduroy
Fine, washable pinwale corduroy in a high assortment of smart solid colors. All first quality. Ideal for skirts, jackets, jumpers, dresses, housecoats. Come in, and buy now! **98¢ yd.**

COTTON PRINTS Washfast colors, 80 x 80 percale. 36-inch widths, over 60 patterns and colors to choose from. A terrific buy 39¢ at Newberry's saving price 39¢ yd.	POPLIN & SAILCLOTH Crease resistant, 36-inch widths. Fast colors in solids and prints. Latest colors to select from. For dresses, shirts, skirts. Regular 69¢ 47¢ yd.
EMBOSSED COTTON Guaranteed fast to washing. All first quality, 36-inch widths in prints and patterns. Perfect for dresses and shirts. You won't want to miss this buy! Regular 59¢ 47¢ yd.	BUTCHER LINEN Guaranteed washable, crease resistant. 36-inch width. Choose from yellow, white, navy blue, brown beige, powder blue, sky blue, black, pink, coral, red or purple. Buy 59¢ now! yd.

J.J. Newberry Co. 1012 Wall Phone EV 2-5152
Open Daily 9 A.M.—5:30 P.M.

NOW OPEN FOR INSPECTION...



Greenwood Memorial Mausoleum

The Greenwood Memorial Mausoleum has walls of massive strength to stand against the world and its elements—as a symbol of the everlasting haven of eternal peace. When you select entombment in the Greenwood Memorial Mausoleum, you honor the departed with the reverence of all great stone tombs everywhere. Your memories join the hallowed companies of those which have come down through the ages.

FOR COMPLETE INFORMATION CONTACT

Niswonger & Winslow Funeral Home

Hill at Irving Ave.

Phone EV 2-2471