

HATCHERY ENTERTAINS TOURISTS—Gene Morton, Game commission man in charge of Wizard Falls Trout Hatchery, dips some Golden trout from their pond. The gaping looks of the tourists are not for naught. Golden Trout, with brilliant gold and red undersides, are the most beautiful species imaginable.

Wizard Falls Turns Out 1,500,000 Trout a Year

By LARRY LYNCH
Bulletin Staff Writer

Five miles down the Metolius river from Camp Sherman an impressive operation works year around to maintain Central Oregon fishing.

It's the Wizard Falls Hatchery. Operated by the state game commission, it keeps the area's lakes and streams well supplied with trout. It is the largest of 15 trout hatcheries in the state.

The hatchery helps to: (1) enhance Central Oregon as a vacation land, (2) provide unlimited recreation for fishing minded Central Oregonians, and (3) provide tourists and fishermen to spend thousands of dollars in the area. Well over 10,000 tourists a year are attracted by the hatchery itself. This is easily understood once you have visited the clean, refresh-

ing grounds and heard head-man Gene Morton describe his operation.

Looks Like Resort

It's three neat brown cabins and several large, attractive buildings sitting among grass and pines look like a resort layout. And sparkling ponds lend the fresh atmosphere.

A total of 1,500,000 trout will have been stocked in streams and lakes from the hatchery by the end of the season.

Morton says right now the hatchery is raising for stocking purposes 232,000 rainbow; 91,000 german brown; 70,000 cut throat, 40,000 steelhead; 62,000 golden trout; and 200,000 kokanee. In addition, they are experimenting with Atlantic salmon and have planted some in Davis Lake.

Most local stream and lake stock-

ing is done with rainbow. Game Commission men have been stocking 25,000 rainbow a month since early spring. This is what they call "stocking for the rod."

Special elevated holding tanks at the hatchery prepare the fish for hauling to the stocking point. Trout are starved there for 24 hours. That way all excrement is eliminated.

Feeding Large Problem

Feeding the trout and salmon presents a large economic problem.

Morton has invented a device that saved the hatchery \$8,000 in one year.

It enables the hatchery to grade fish according to size twice during the fish's growing period. The device sets in a pond and the trout or salmon are swept between two plexi-glass rods by a stream of water. A space between the rods gradually widens from one end to the other. Four troughs underneath lead to separate baskets. The smallest fish fall through to the first trough, the next smallest fish to the second trough and so on.

Trout are cannibalistic. Formerly they had to be over fed to keep large from eating small. Now the same sizes are kept together and this isn't necessary. And small fish get their share of the food.

Also the largest fish can be kept aside and planted first. Size can be controlled so trout don't grow over 10 inches in length. If they get any larger, hauling costs jump tremendously.

Salmon Here? Maybe

Most important experiment the hatchery is carrying on concerns Atlantic salmon, says Morton.

The Oregon State Game Commission is attempting to transplant these salmon in Oregon. Dis-

Lack of Bugs, Mountain Lakes Easy Access Boost Suttle Can Be Reached By Pack Trips

Scenic Suttle lake is easily accessible and usually free of mosquitos.

Those two advantages make it a favorite recreation area for tourists, campers, fishermen and boating enthusiasts. Thousands visit the lake every summer.

The lake is twenty miles out of Sisters. It's 450 acres of deep blue water lie a few hundred yards south of the Santiam highway.

Campers give the lake area heaviest use. Families come there to fish and enjoy forest camping. The Forest Service, has improved 125 campsites on the edge of the lake. Improved campsites include a fire-place, table and parking area. Groups camped on the lake's shore usually run about triple the number of improved sites.

Last July 4th the Forest Service counted 3900 campground and picnic area visitors at Suttle lake.

At the northeast corner of the lake, an area is roped off for swimmers. This area includes one of the lake's best beaches.

The Suttle Lake Resort is also situated on the northeast shore. In a year it caters to 600-700 guests, mostly fishermen. The resort has a grocery store, sells fishing supplies, and rents 24 fishing boats. It's dining hall is open most of the day to all tourist trade.

Suttle lake is being used as stocking grounds because it is land locked and the salmon have no way of getting out to the sea.

Atlantic Salmon brood stock were brought from the eastern coast to Wizard Falls five years ago. Last year the hatchery stocked 2300 in Davis lake. Only a few have been reported caught.

Wizard Falls has retained 66 of the large salmon to use as brood stock. When the second generation lived the experiment passed its greatest test, Morton says. But the fish take five years to reach maturity so it's a slow process.

Follow Breeding System

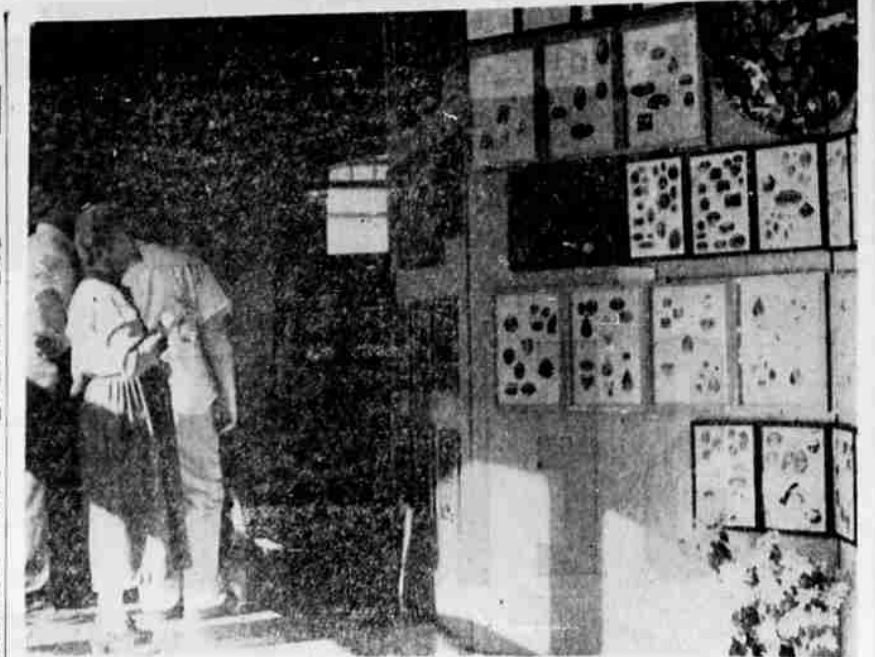
The men at Wizard Falls Hatchery follow a general system in breeding of trout and salmon. The eggs are stripped from females and fertilized with milk from the bucks. Then the eggs are placed in baskets and submerged in quiet troughs in the hatching building. In 16 days the eggs eye up. Then bad eggs can be sorted out. In another 16 days the trout hatch. For a third 16 day period, the newly-born trout absorb a food sack that lumps on their throat. At 50 days they are moved to the regular pond.

It takes 170,000 pounds of feed to keep the trout and salmon at the hatchery supplied for a year.

By the time a rainbow has grown over 10 inches in length, it has consumed 5 cents worth of feed.

Fingerlings are fed on ground liver, spleen, dry meals and salt. The larger fish are fed salmon viscera in addition.

Four men, and a part time employee when the heavy spring season is on, keep the hatchery running.



GEMS FROM AGED HILLS—Pictured here is a wall display of agates at the 1956 gem show in Prineville. Thousands of gems shaped from semiprecious stones, most of them found in Central Oregon, were included in the colorful display. (Bend Bulletin Photo)

Oregon's Tourist Attractions Area Advertised At L. A. Show

By ALBERT N. NEWTON
Deschutes Geology Club

Oregon, is one of the most outstanding states of the union for its diversified, precious and semi-precious array of stones. Many tourists and gem hunters search its hills and deserts for greatly valued stones.

Every year the local Chamber of Commerce spends \$800 to \$1000 on a booth at the Los Angeles Sportsman's show.

The show is presented in the Pan Pacific Auditorium in the large California city. It lasts 10 days during the middle of April. Last year 321,183 persons went through the large hall looking at booths and exhibits from all over the West.

Bend has been taking an exhibit to the show for some 10 years.

In 1956 the Bend booth was manned by Mr. and Mrs. Ed Burke of Bend and Mrs. and Mr. Art Kaiser of Redmond.

The stream of people past the booths is continuous. The Burkes and Kaisers report they never had a chance to stop talking.

locations. Hampton buttes are the most prolific source but Crooked river is also a fine section to secure this highly prized material. Madras, Klamath Falls and Grizzly are the best locations for opalized wood.

Jewelry is made from the beautiful centers of geodes which are scattered over the hills and deserts of this country. Crystal in many shapes and quality fill these unique spheres.

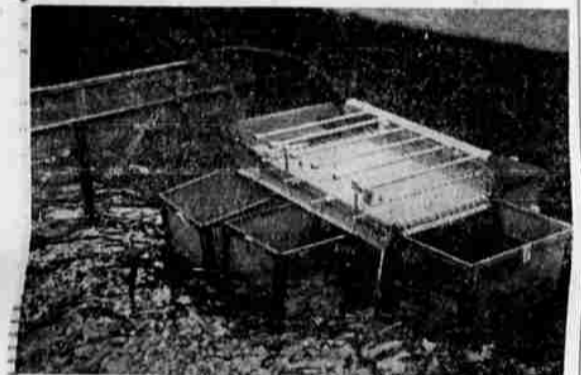
pictures in beautiful colors and group forms. Snowflake agate is agate with white specks resembling snow flakes on a darker background. Dendrite agate is the most valuable. It portrays ferns and shrubs and some landscape scenes. Sagebrush scenes are very common.

Pony agates are found on Pony Butte. They have a light background mottled with brown spots. These buttes are easily accessible to anyone wishing to visit them. The name polka-dot agate is sometimes applied to these stones although they are not the true polka-dot variety found in some other localities.

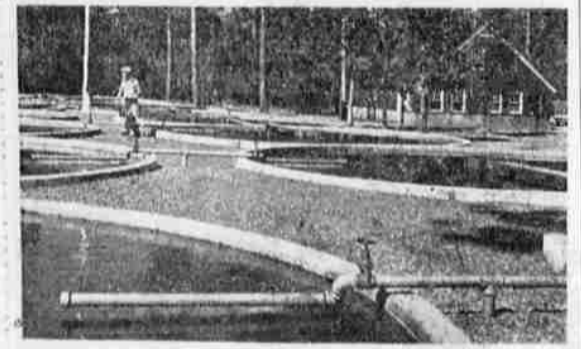
Iris is found in Warm Springs country. When cut in thin slabs and polished it portrays the rainbow in colors and form. The Antelope country is an iris location.

Jasper in many colors is found. It varies in quality from the finest to the most common. It is found wherever agate is found. Jasper polishes to a beautiful gloss and is used in jewelry setting as well as paper weights, spheres and other articles. It is one of the best materials for an amateur to begin practicing on when learning lapidary work.

Agatized wood, or petrified wood varieties are outstanding for their beauty and can be found in quantity in several



GRADING DEVICE IN POND—The trout grading device invented by Gene Morton sets in the pond ready for trout to be run through it. By a simple system, this grader separates into different baskets, three sizes of trout. In one year, the grader saved Wizard Falls \$8,000 in feed.



FINGERLING PONDS—These large round ponds are used to house fingerlings for the first few months after they are hatched. The sparkling ponds, the cleanliness, the pine trees, the grass and the building in the background give an idea of why the hatchery grounds look like a resort.

Everything For Your Car or Truck

We carry a Complete line of Automotive Parts and Supplies. Whatever your needs, just come to us.

Perfect Circle
Custom-Made Piston Rings
NURILIZING
Sizes all pistons ... Fast, accurate, permanent.
A close fit guaranteed.

— ALSO —

2-in-1 Perfect Circle
Solid Chrome Piston Rings

SEE YOU AT THE FAIR

Cascade Auto Parts

209 Greenwood Phone 1626

NEW FUEL OIL SERVICE

B. A. LITEHISER

Distributor of Texaco Products
Is now Prepared to Deliver Fuel
Oil in a New Truck equipped with
an automatic meter. You will now
receive a printed meter ticket with each delivery.

TEXACO

This New Truck Will be Used Exclusively
For Fuel Oil Delivery

By using an exclusive Fuel Oil Delivery truck, Your oil will not
be contaminated with other Petroleum Products.

— CALL US FOR PROMPT SERVICE —

B. A. LITEHISER

Distributor of Texaco Products
Phone 251

Everyone Enjoys... The Deschutes County Fair!

Where else could one get a better look at the prosperity of our fertile lands—the best of the year's harvest—and the accomplishments of our fine 4-H boys and girls?

Actually, the Deschutes County Fair is a reflection of the present—and a preview of things to come.

U. S. National service has assisted in the continuing progress of Deschutes County. We have the deepest confidence in this area's future growth and development.

Whatever your banking need may be, you'll find friendly, competent service at U. S. National.

ATTEND THE DESCHUTES COUNTY FAIR—AUGUST 23 THROUGH 26

Deschutes County Branches in
BEND AND REDMOND
Member Federal Deposit Insurance Corporation

Oregon's Own STATEWIDE BANK