

# SPORTS

## 'Iron Duke' Iba's Oklahoma Team Has Disastrous Trip

By ROBERT H. PETERSON  
STILLWATER, Okla., Feb. 21 (UP)—The "Iron Duke" of college basketball, Coach Henry P. Iba of Oklahoma A & M, was back within the friendly walls of Gallagher hall Thursday after five smarting defeats on a six-game road trip.

The 47-year-old coach, who has one of the best career records in the business, had plenty of cause for worry. A sparkling 12-3 record was shattered on the murderous trip when the five winners were archrivals of Iba. The formidable five who "point" for the duke, every year include, Dr. F. C. (Phog) Allen of Kansas, Ray Meyer of DePaul, Bruce Drake of Oklahoma, Fordy Anderson of Bradley and Hank's brother, Clarence Iba of Tulsa.

**Another Rival**  
Another of Iba's heated rivals is peppery little Eddie Hickey of the St. Louis Billikens. Hickey, after a 48-40 victory over the Aggies last month, lashed out at the Aggies' ball-control tactics and under-the-basket "rough stuff."

A Missourian by birth, Iba was one of the first successful advocates of ball control and tedious defensive play. During his 22 years at A & M, he has tutored a number of youths who are now major coaches in their own right. And they generally teach Iba's slow, deliberate game.

Among them are Herman Millikan of Maryland, Doyle Parrack of Oklahoma City University, Floyd Burdette of Alabama, Wilbur (Sparky) Stralup of Missouri and his brother, Clarence. Another of his pupils, Gene Smelser, is now his assistant.

Basketball has come a long way at A & M since Iba appeared here for the 1934-35 season, and it's still his show. His "Iron Duke" title comes from a strict discipline he wields over his men.

## Tourney Slated For Cow Palace

SAN FRANCISCO Feb. 21 (UP)—The post-season fate of Northern California's four major independent cage squads will be riding on the results of the second annual Cow Palace basketball tournament Thursday night and Friday.

St. Mary's and the University of San Francisco meet in Thursday night's opener, with Santa Clara and San Jose State clashing in the second contest.

It will be loser against loser in Friday night's consolation opening tilt with winner facing winner in the knockout that will determine the tourney champ.

To the victor goes the probability of a bid to the post-season NCAA tournament in Corvallis, Ore., next month.

## Ducks Shooting For Second Spot

EUGENE, Feb. 21 (UP)—The University of Oregon, hoping for second place in the Northern Division, left Thursday for a four-game "suicide" invasion of the Inland Empire.

The Ducks meet Washington State Friday and Saturday and Idaho Monday and Tuesday. The latter two games will probably decide the second place finisher.

Bob Peterson, Oregon's rebound artist, is just 20 shy of the northern division record of 182 he established as a sophomore last season.

## Cowboys to Play Burns, Lakeview

PRINEVILLE, Feb. 21 (UP)—The Crook County High School Cowboys basketball team will go to Burns for a game Thursday night with the high school there and on Friday night will play Lakeview.

The local school split a week-end series of two games, Grant County High of John Day here on Friday night the Cowboys defeated John Day 51 to 30. However, on Saturday night the visitors came back to defeat the host team 42 to 40 in a game of spectator thrills throughout, as scoring ran nip and tuck, and required two overtime periods.

**CONTRACT SIGNED**  
ST. LOUIS Feb. 21 (UP)—Catcher Del Rice has signed his 1952 contract with the St. Louis Cardinals.

## BOWLING

**MERCANTS LEAGUE**  
Oregon Trail Box captured high team series, 2698, in Merchant league play last night, to down Riverside Service by three points and return to first place in league standings. High team game was taken by Coca-Cola with 998 points, to defeat Oregon Trunk by a three-point margin, despite the fact that Ted Vogt of Oregon Trunk had high individual honors, 235, and high series, 617. In other team matches, the Eagles defeated L.L.C. by four points and Greenwood Grocery won three from Sisters V.P.W. The results follow:

**Riverside Service:** J. Christensen 410, G. Carsey 443, S. Dearth 429, A. Harrington 390, C. Blevins 480. Total 2558.

**Oregon Trail Box:** W. O'Brien 563, J. Rice 503, J. Peterson 457, J. Jacklich 443, A. Curtis 414. Total 2698.

**Greenwood Grocery:** L. Ackerman 415, R. Zanon 448, H. Terwilliger 431, W. Peterson 454, F. Smith 436. Total 2487.

**Sisters V.P.W.:** B. Rondau 433, R. Brandsma 386, M. Coglianesi 390, N. Minks 316, E. Smith 423. Total 2467.

**Eagles:** S. Perrigan 443, B. Stripling 347, C. Billadeau 430, P. Dalrymple 411, C. Pattee 434. Total 2584.

**Lundgren's:** Youngberg 444, Geo. Ray 397, Floyd Carter 454, C. Howe 440, D. Brown 432. Total 2371.

**Oregon Trunk:** T. Vogt 617, W. Heller 326, H. Reid 372, F. Hebert 470, F. Kizer 445. Total 2608.

**Coca-Cola:** Wilcox 428, Cecil 539, Adams 510, Williams 468, Curtis 483. Total 2668.

**WOMEN'S MAJOR LEAGUE**  
Eastern Oregon Mills took three points from Medo-Land, Bend Dairy split two points with Acuff's, and Bob's Sporting Goods split two points with Smoke Shop in Women's Major league bowling last night. Julia Coulter had high game, 193; Arlene Cundell had high series, 530; and Acuff's had high team series, 2566.

**Bend Dairy:** M. Sholes 443, R. E. Rasmussen 433, G. Diver 360, P. Crocker 432, A. Cundell 530. Total 2552.

**Acuff's:** R. Kargman 454, E. Acuff 428, J. Murphy 355, M. Damon 473, O. Norcott 448. Total 2566.

**Eastern Oregon Mills:** B. Wallan 477, B. Howe 400, L. Anderson 417, H. Powers 441, E. Rolts 423. Total 2487.

**Medo-Land:** M. Blucher 476, I. Mawhinney 437, H. Martin 395, V. Cecil 409, M. Douglass 469. Total 2186.

**Bob's Sporting Goods:** Kay Stout 461, Kay Donahue 391, Evelyn McKay 401, Julia Coulter 493, Mabel Clark 423. Total 2508.

**Smoke Shop:** L. Rice 460, B. Calder 451, M. Dubois 427, A. Eimann 399, L. Keown 390. Total 2508.

**Wyoming Next For Huskies**  
SEATTLE, Feb. 21 (UP)—The Washington Huskies, winners of the Northern Division basketball title, left here by air Thursday to tangle with a tough University of Wyoming five.

The Huskies will match a seven-game winning streak against the high-riding Cowboys, winners of 10 straight and leaders of the strong Skyline Conference.

Washington will meet the Cowboys twice, once Friday night and again Saturday.

**WHITE SOX TRAIN**  
EL CENTRO, Calif. Feb. 21 (UP)—A squad of 18 Chicago White Sox regulars and seven of their farm hands reported to Manager P. A. J. Richards here Wednesday for the formal opening of spring training.

the last of the clubs roster to agree to terms. Rice's contract reportedly called for a slight increase to an estimated \$15,000 for the season.

Try the NEW WAY at **SAFEWAY**

# Everybody's doing it!

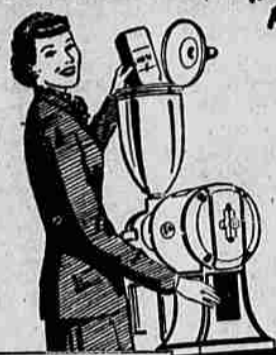
You can NOW grind your own coffee just the way you want it!

IT'S SO QUICK AND EASY

SAVES TIME FOR EVERYBODY

SAVING TIME AT SAFEWAY SAVES MONEY FOR ME

SAVES A LOT OF WAITING IN LINE



JUST FOLLOW THESE THREE EASY STEPS

1. Pour in the coffee beans
  2. Set indicator for the grind you want.
  3. Flip the switch.
- PRESTO!** A bagful of the freshest coffee you can buy.



**TRY Skylark 100% WHOLE WHEAT**  
Very nutritious—made from flours containing all the vitamins and minerals of the whole wheat berry. Flavored with pure honey. Try it! **19c**  
GUARANTEED BETTER BREAD  
You'll like these new Skylark Variety Breads

- Rye Bread... lb. loaf 19c
- Raisin Bread... lb. loaf 20c
- Potato Bread... lb. loaf 19c

VAN CAMP—No. 300 cans

**Pork and Beans . . . . . 3 cans 39c**

QUICK and EASY TO PREPARE—Reg. pkgs.

**Kraft Dinners . . . . . 2 pkgs. 25c**

**Van Zee Cheese Food . . 2 lb. pkg. 79c**

SUNRISE BRAND

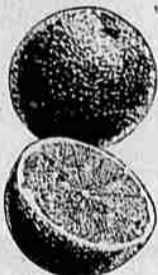
**Macaroni - Spaghetti . . 2 lb. pkg. 29c**

**Sunshine Krispy Crackers, lb. pkg. 29c**

- Ruth Ashbrook Pastries . . . . . pkg. 30c
- Busy Baker Crackers . . . . . lb. 29c
- Dromedary Fitted Daas . . . . . 7 1/2 oz. 23c
- Dromedary Ginger Bread Mix . . . . . 14 oz. 26c
- Dromedary Devils Cake Mix . . . . . 14 oz. 30c
- Fresh Milk . . . . . qt. 21 1/2c
- Spring House Butter . . . . . lb. 89c
- AA Large Eggs . . . . . doz. 57c
- Allsweet—Lb. 29c
- Margarine, with coupon . . . . . 19c

- Mayday Salad Oil . . . . . qt. 59c
- Royal Satin Shortening . . . . . 3 lb. can 79c
- Colgate Dental Cream . . . . . econ. size 63c
- Alka-Seltzer . . . . . lge. size 54c
- Cashmere Bouquet—plus tax
- Hand Lotion . . . . . lge. size 47c
- Halo Shampoo . . . . . lge. size 57c
- Tums . . . . . 3 rolls 25c
- Dr. West Tooth Brushes . . . . . ea. 59c
- Nip N' Tuck Cat Food . . . . . 6 oz. can 7c

### Safeway Farm-Fresh Produce



FLORIDA JUICE-LADEN AND SWEET  
**ORANGES**  
5 Lb. Bag **49c**

Drink your vitamins! These bright Florida beauties are simply bursting with rich, sweet juice.

- FIRM, GREEN HEADS **CABBAGE . . . . . lb. 9c**
- FRESH, GREEN and LEAFY **LETTUCE . . . . . lb. 13c**

California Navel **ORANGES**  
Enjoy them in sparkling fruit salads. Here is a wonderful value!  
**15c**

California **CALAVOS**  
each 10c

- ARIZONA DESERT **GRAPEFRUIT . . . 8 lb. bag 39c**
- FRESH **BROCCOLI . . . . . lb. 19c**
- CALIFORNIA **CARROTS . . . . . lb. 10c**
- MEXICAN **PEPPERS . . . . . lb. 29c**
- ECONOMY SIZE **POTATOES . . . . . 10 lbs. 58c**
- 13-OZ. TUBE **TOMATOES . . . . . ea. 25c**

Prices in this ad effective through Sunday, Feb. 21.

**Margarine**  
Delrich—Colored  
1 lb. pkg.  
**2 for 59c**

**FLEET MIX Biscuit Mix**  
Lge. Pkg.  
**29c**

**Crisco**  
3 Lb. Tin  
**89c**

**Kremel**  
Lemon Pie Filling  
4-oz. pkg.  
**6 pkgs. 25c**

“so fresh you can **Taste** it”



The superb flavor and aroma of Nob Hill and Airway Coffees remain LOCKED INSIDE the whole bean 'til you are ready to buy!

Remember . . . it's the COFFEE that counts, NOT the container. Nob Hill and Airway Coffees are rushed roaster fresh to your neighborhood Safeway store. They don't need EXPENSIVE packages to protect their freshness. So you SAVE 5 to 10 cents a pound!



**NATIONAL BRANDS**  
1 lb. 89c 2 lbs. 1.77

**Nob Hill Coffee**  
**Airway Coffee**  
**Edwards Coffee**

lb. bag **79c** 2-lb. **1.57**  
lb. bag **75c** 2-lb. **1.49**  
lb. can **83c** 2-lb. **1.65**

### BABY FOODS

Gerber's Strained and Jr.  
**12 cans 1.00**

### FRISKIES

CUBES or MEAL  
2-lb. pkg. 5-lb. pkg.  
**36c 79c**

### Pancake Flour

Suzanna Pancake and Waffle Mix  
**10 lb. pkg. 98c**

### Oriental Dinners

Chun King COMPLETE  
**57c**

### Why Not Bake a Luscious CHERRY PIE

Honeybird—No. 2 can  
**Cherries . . . . . can 25c**  
Kitchen Craft—10 lb. pkg.  
**Flour . . . . . pkg. 89c**  
Pillsbury—9 oz. pkg.  
**Pie Crust Mix . . . . . pkg. 19c**

### FAMOUS ZEE BRAND PAPER PRODUCTS

Facial—400's  
**Tissue . . . . . 2 rolls 45c**  
Zee  
**Tissue . . . . . 4 rolls 29c**  
White—80's  
**Napkins . . . . . 10c**  
**Wax Paper, 125' . . . . . 21c**

### Save on Finest Quality Bel Air Frozen Foods

Bel Air  
**Peas . . . . . 12 oz. 21c**  
**Strawberries . . . . . 12 oz. 33c**  
**Orange Juice . . . . . 6 oz. 17c**  
Minute Maid Frozen  
**Orange Juice . . . . . 6 oz. 21c**

### Safeway Guaranteed Meat Values

**Rib Roasts**

U.S. Gov't. Good Grade **84c** U.S. Gov't. Choice Grade **90c**



**Round Steaks** U.S. Gov't. Good Grade **1.04**

U.S. Gov't. Choice Grade **1.05**

**Sirloin Steaks** U.S. Gov't. Good Grade **1.10**

U.S. Gov't. Choice Grade **1.14**

### SMOKED MEAT VALUES!

- Sliced Bacon . . . . . lb. 55c
- Fancy Pack Sliced Bacon . . . . . lb. 46c
- Reg. Pack Fancy Hams . . . . . lb. 59c
- Sugar Cured Picnics . . . . . lb. 39c
- Fine Flavor Bacon . . . . . lb. 45c
- By the piece

- Boneless Corned Beef . . . . . lb. 59c
- All Beef Ground Beef . . . . . lb. 59c
- Leg o' Lamb . . . . . lb. 89c
- Lamb Shoulder . . . . . lb. 79c
- Rib Lamb Chops . . . . . lb. 95c
- Loin or Rib End Pork Roast . . . . . lb. 45c
- Pork Steaks . . . . . lb. 49c
- Picnic Shoulder Pork Roast . . . . . lb. 35c
- Pork Spareribs . . . . . lb. 59c

- Pork Sausage . . . . . lb. 49c
- Bologna Rings . . . . . ea. 45c
- Polish Sausage . . . . . lb. 69c
- Assorted Lunch Meat . . . . . lb. 59c
- Skinless Wieners . . . . . lb. 65c
- Pan-Ready Fresh Fryers . . . . . lb. 69c
- Pan-Ready Tom Turkeys . . . . . lb. 59c
- Fresh Oysters . . . . . pt. 69c
- Center Cuts Pork Chops . . . . . lb. 65c

## SCHILLING Flavor Variety

For "different" desserts, choose from 21 Schilling flavoring extracts!



REMEMBER! Schilling Products are never packed under any other name

# SAFEWAY