

Three Million Pine Seedlings to Be Added to Nursery

Young Trees Transplanted; New Buildings Constructed

The newly-established Bend pine nursery, east of town on Butler road, was a scene of considerable activity this week as a crew under the supervision of Walter A. Engstrom, nurseryman for the United States forest service, planted seeds from which will grow 3,000,000 pines. Seeds planted in the new nursery were gathered from many parts of the Pacific northwest, and the tiny trees that will grow from the seeds eventually will be available for transplanting in pine forests of the region.

Under an arrangement effective for the first time this year, all pine seedlings for the northwest region will be grown in the local nursery. Formerly, pines were grown at the Wind River, Wash., nursery.

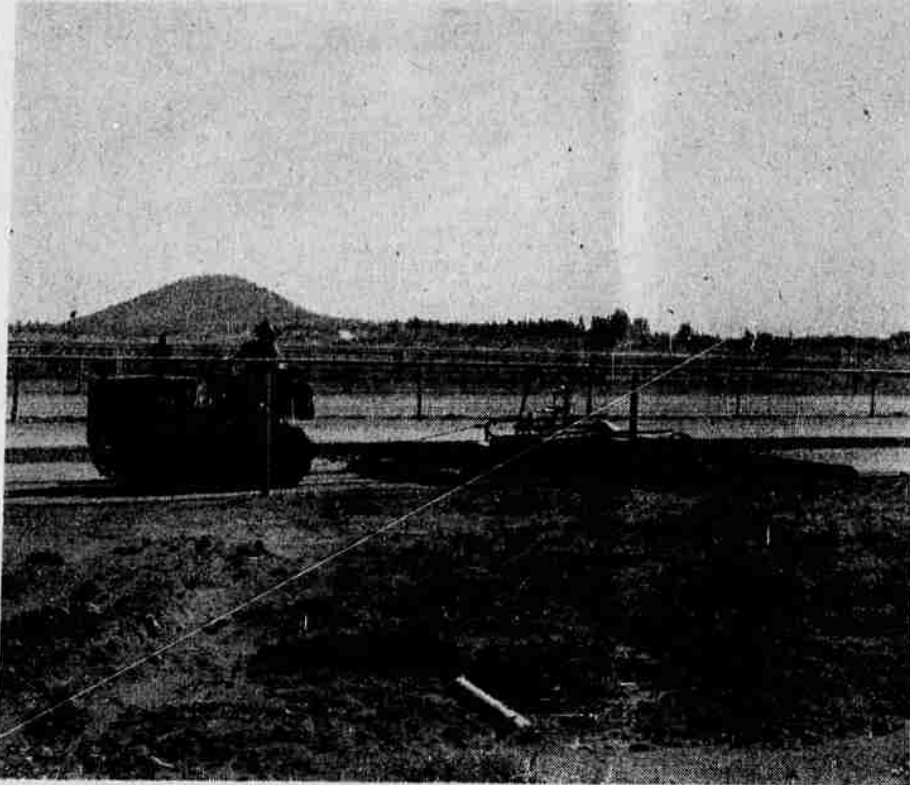
In addition to seeds planted in the local nursery, 200,000 two-year-old pines grown from Idaho seed at Wind River have been transplanted here. These will be available for transplanting in Idaho forests following a year's growth here.

The new Bend plant, used for the first time last year, is now the major pine nursery in the North Pacific region. In 1948, a million and a half seeds were planted, but adverse weather conditions, including the coldest winter on record, apparently resulted in a heavy winter kill. A wet spring last year and a heavy hail storm were also factors that made life hard for the young pines.

In connection with the big nursery, a headquarters plant is being built up, with the contract let this week for construction of a seed-extracting plant.

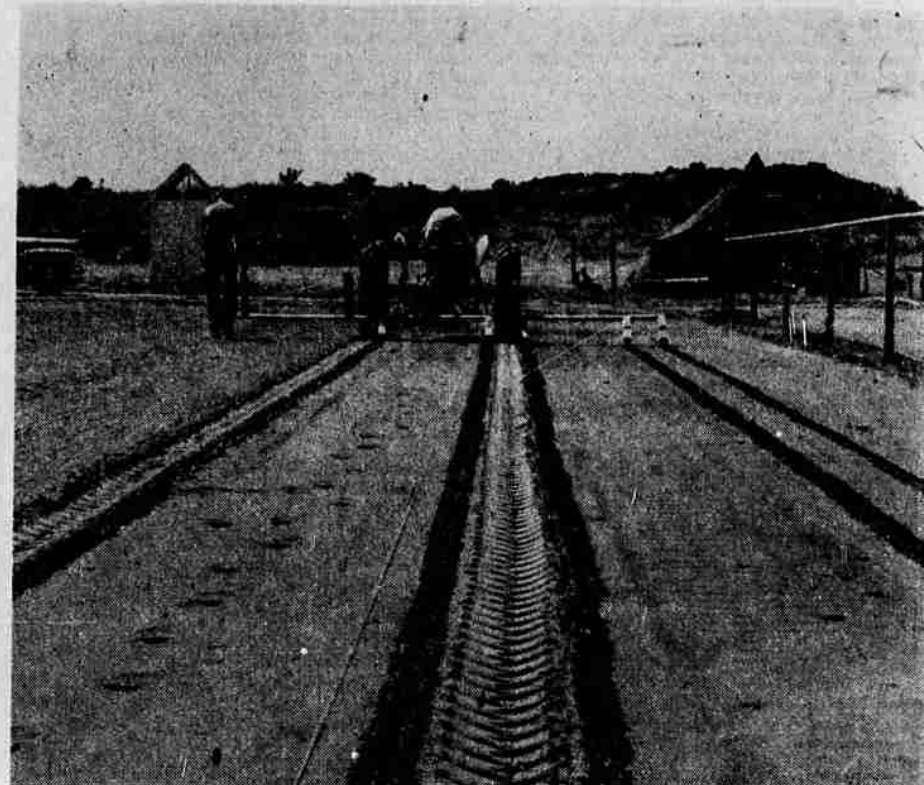
In the near future, an office building will be added to the structures now finished or being built.

Field Prepared for Pine Seed



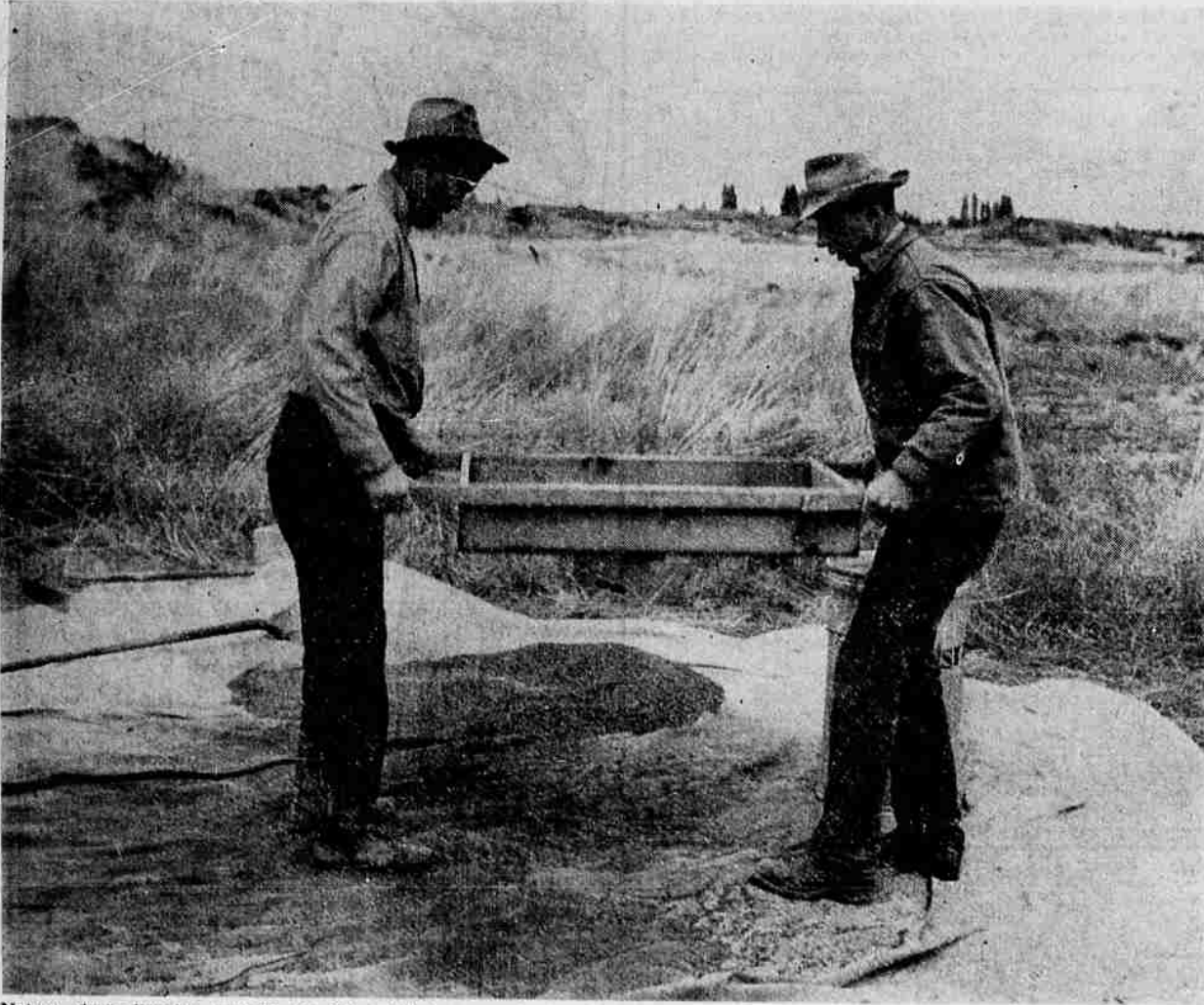
Ray Moore is at the controls of the tractor as it drags land-leveling equipment over pulverized ground in which pine seeds were planted. In the background, some three miles distant, is Pilot butte. The picture was taken at the Bend pine nursery east of town on the Butler road.

Ground Marked for Pine-Seed Drill



Pictured here in operation is a specially devised piece of equipment used in marking the nursery fields for the guidance of the crew that operates the drill, from which pine seeds are dropped into the earth. Tractor wheels also do their part in marking the field, preparatory to seeding.

Pine Seeds "Awakened" From Hibernation



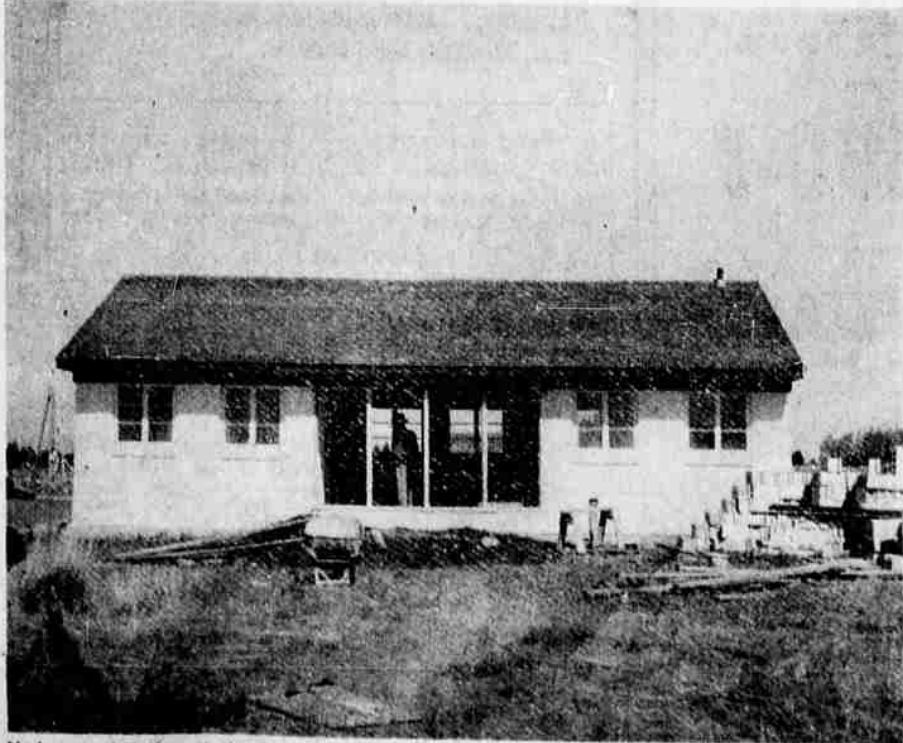
Nature plants its pine seeds in the fall, and before germinating the seeds pass through a winter's hibernation. Seeds gathered for nursery use also pass through a period of winter hibernation, mixed with soil and with the temperature artificially lowered to 31 degrees. James W. Betts and Roy Moore are pictured here sifting the seed from gravel and dirt at the new Bend pine nursery. After being freed from the gravel, the seeds are planted.

Drill Used in Planting "Forest" at Bend Pine Nursery



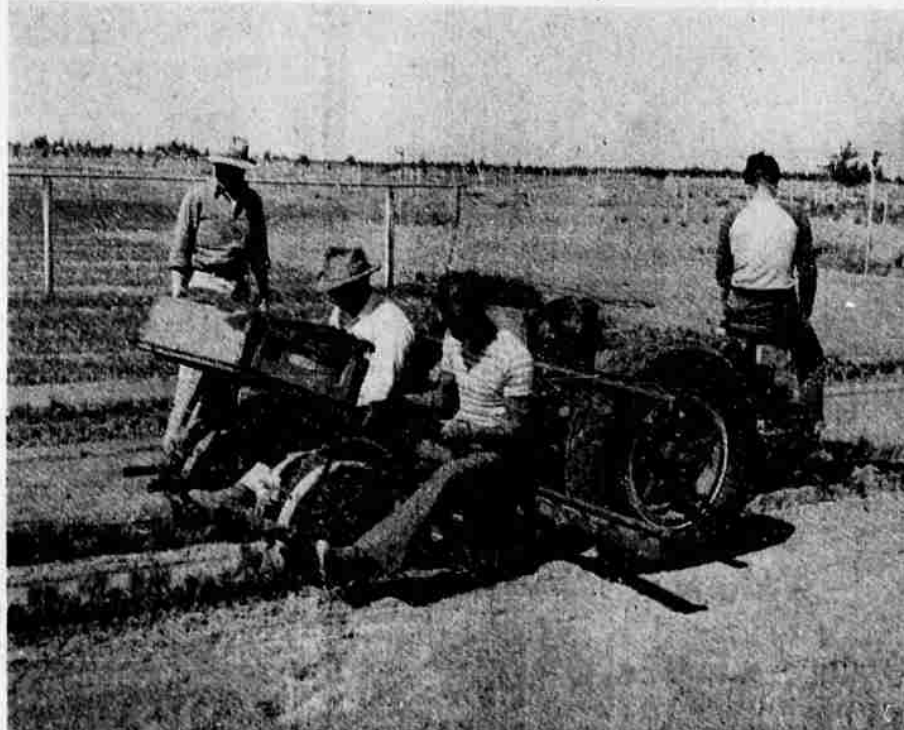
Carefully following long marked rows banked by sprinklers, a pine seed drill is shown in operation here, at the Bend pine nursery. Two men accompany the drill, to make certain the outlets are carefully feeding, and to be sure that the delicate seeds are covered. Just as soon as the seeds are in place, the overhead sprinkling system is placed in operation. Water sprays from each side of the tract, overlapping at the center.

Nursery Office Under Construction



Under construction at the Bend pine nursery now is an office building. In the center of this building will be four large windows, through which the entire Central Oregon Cascade range will be visible. A warehouse and other buildings were completed last year. This week, a contract was let for a seed extraction plant.

Machine Transplants Tiny Pines



A pine transplanting machine is pictured in action here, placing in the earth at the Bend nursery seedlings shipped here from the Wind River nursery, in Washington. Operating the machine, with back to the camera, is Bob Blakley. Murel Wescoatt and Lawrence Chaney are placing the seedlings in the transplanting wheel. Watching is Nurseryman Walter Engstrom.

Tiny Pines Placed in Moist Earth



Transplanting equipment is shown here in operation. Four rows of seedlings are placed in the earth on each trip through the nursery field. Bob Blakley is looking back over the machine, to make certain all is well. Inspecting the work is Nurseryman Engstrom.