

New Rural Distribution Line Taps Farms in North Unit Area

Current Flows Over Circuits Even Before Water Reaches Jefferson County Acreage

Pacific Power & Light company construction crews are completing 45 miles of new rural distribution line on the North unit project to serve the 200 farms being developed on the first 20,000 acres of Central Oregon's newest irrigation development, W. A. Lackaff, P. P. & L. district manager, said today.

Construction of the extensive rural distribution system on the North unit followed war production board approval of Pacific Power & Light company's request to bring electricity onto the project before the big

acreage is actually irrigated as a means of speeding settlement and development of the land to boost food production for the war effort.

Lackaff said land owners are already building homes on 80 acre tracts surrounding Culver and Metolius to be ready for the first irrigation water expected late in the summer for fall seeding. About 70,000 acre feet of water are in storage in the Wickup reservoir.

Bebb First Customer

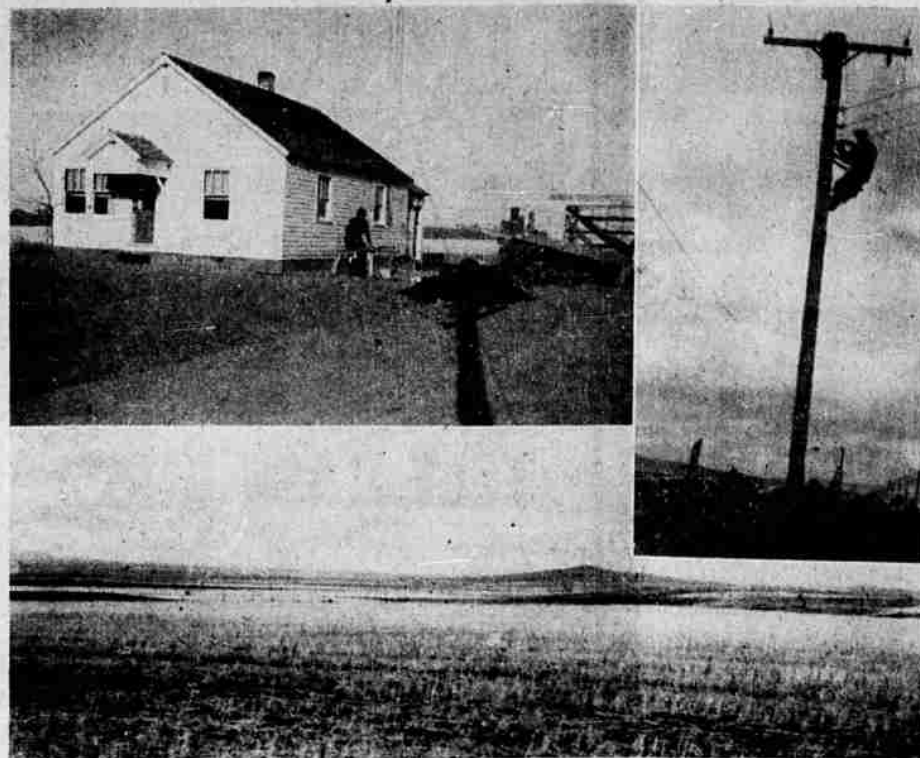
First customer to be connected to the Pacific Power & Light company's new lines on the North unit is L. E. Bebb, who came to Central Oregon two years ago and bought an 80-acre tract near Culver where he is now completing a

comfortable farm home. Like other tracts being developed on the project, the Bebb farm is to be thoroughly electrified.

Generally, the newly irrigated tracts on the North unit project will be diversified with emphasis on alfalfa, grain crops, beans, potatoes, dairying and poultry and livestock raising, but Bebb and other settlers from Idaho see a future for commercial seed raising on the new land.

Bebb, a long-time resident of the Boise valley, an established commercial seed growing district, has been dry farming and raising wheat on his tract while waiting for water. He will plant clover this fall to improve the soil and harvest the crop for seed. Later, he plans to grow onion, carrot and sugar beet seed crops.

Power Ready for North Unit Farms



Electricity from Pacific Power & Light company lines is aiding development of new farms on the North unit project. First of 200 farms to receive electric service there is the 80-acre tract owned by R. E. Bebb, where the comfortable farm home (photo upper left) is being completed. Bebb has already planted shade trees, grapes and raspberries. Lower photo shows view of sparsely settled dry land farming area where North unit water will soon establish irrigated farms.

Prineville Man, Twice Hurt, Reaches States in Big Plane

Mitchel Field, New York, April 19 — Twice wounded and a veteran of every major battle from Normandy to the Rhine, Pfc. Clarence Shepherd, son of Mr. and Mrs. Charles Shepherd of Prineville, Ore., arrived here April 6 in a great four-motored hospital plane, flown direct from Scotland via Iceland and Newfoundland. He will be evacuated at once by air to another army hospital.

Inducted in 1941, Shepherd received his training as an infantryman in Camp Walters, Tex., and in South Carolina. He went overseas in December, 1943, going to Ireland and then England. His unit landed in Normandy on July 6 and he took part in the grim hedgerow fighting, in the siege of St. Lo and the subsequent breakthrough.

He was riding General Patton's tanks on their first swift dash toward Brest, and when General Patton turned back toward Paris, Shepherd's unit went on to the siege of Brest. There, in August, 1944, he was wounded when a

German mortar shell exploded near him. Fragments struck him in the right leg and right elbow, injuring the arm bones. He was sent to a hospital in England, where he remained three months. His leg had entirely recovered but he still had difficulty with his arm.

When Von Rundstedt broke through in Belgium, Shepherd returned to Europe in the 1st Army and went through the battle of the Bulge. He fought through the winter while the Germans were being pushed back, crossed the Roer river and was nearing the Rhine when he was wounded a second time. His section met a German tank and tried to stop it with a bazooka. A shell knocked out four of the seven men.

Shepherd, who was a BAR man and had never fired a bazooka, ran forward to man the weapon. As he reached it a shell exploded close by. He doesn't know where it came from—it may have been from the tank—and he doesn't know what happened to the tank. The explosion blew him into the

air and he suffered from concussion and a broken collar bone. Also a shell fragment struck him in the back and crushed one vertebra. He doesn't know how he was taken to a field station.

Twice, in his many engagements with the Germans, Shepherd was told that he was to be recommended for special honors, but in each case his commanding officer was killed immediately afterward and he doesn't know whether the citations went through. All he knows now is that he has the Purple Heart with bronze cluster.

Fighting in Germany was much tougher than in the early battles in France, Shepherd said. The Germans became stubborn on their own soil and resorted to dirtier tricks.

A deadly disease of the American elm known as phloem necrosis, not related to the Dutch elm disease, is destroying tens of thousands of trees in the Midwest; how it spreads, and how it may be controlled, have not been discovered.

Capital Is Hit By Meat Scarcity; Solons Worried

Washington, April 19 (AP)—Senators who have been investigating the nation's meat shortage for more than a month finally discovered today that there is a pretty alarming scarcity of roasts, steaks and even cutlets right here in the capital.

Every last one of Washington's slaughterhouses has closed up. Couldn't get meat.

A local packer has given his employees a two-weeks' vacation. Can't get meat.

P. F. Casey, Washington's largest independent meat dealer, has closed up after 37 years in business. Can't get meat, either.

What's more, Mrs. Elmer Thomas hasn't been able to get any for her husband and weeks. Mrs. Thomas' husband, a democratic senator from Oklahoma, is head of the senate's food investigating committee.

Congressional sanction of the designation, "nonfat milk solids," to replace the designation, "skim

milk," is evidence of the efforts now being made to improve the peacetime sales appeal and cash return of that portion of milk lying below the creamline. It is not unreasonable to assume that after the war powdered whole milk and nonfat milk solids, both important war products, will be found on the shelves of the grocery store in packages equivalent to a quart of milk.

All reptile venoms are complex proteins that defy full chemical analysis, although a great deal is known about their effect on animal and even plant tissues.

New techniques of disintegration of wood to fibers and recombination of these under heat and pressure to give pressed boards use about 93 per cent of the forest while the production of lumber utilizes 20 per cent approximately.

A new flux de-gassing process, using a flux containing borax, sand and copper oxide, enables tin bronzes and phosphor bronze to be produced successfully from irrefractory commercial grades of metal; older methods require high-grade metals.



Hens take to Larro with facility—Makes the most of their "lay-ability!"

In developing Larro "Farm-tested" Egg Mash, ten different points important to poultrymen are carefully checked by Larro Research workers at General Mills Larro Research Farm.

- Egg Production
- Egg Quality • Egg Size
- Nutritional Health
- Pullet Growth • Molt
- Feed Efficiency • Economy
- Ease of Feeding
- Profit Over Feed Cost

Those ten points make ten reasons why you should find out now what Larro "Farm-tested" Egg Mash and the Larro Feeding system can do for you—your flock—your profits.



"Farm-tested" is a registered trade-mark of General Mills, Inc.

Aune's Feed Store
Bend, Oregon

Crook County Warehouse Co.
Prineville, Oregon

Central Oregon Farm Supply Co.
Redmond, Oregon

ALLEY OOP



Food Savings for Friday and Saturday

COLUMBIA FOOD MARKET

Food Savings for Friday and Saturday



Savings for Friday—Saturday

Ben Hur Tea 2 Lb. Bag Pkgs. 35c	Snow-flakes White or Graham 2 lb. caddy 31c	Coffee Golden West 1 lb. 33c 2 lb. 63c
TANG pts. 25c qts. 39c	Corn, Del Montecan 16c	Peas, Merrimaccan 15c
PUREX 1/2 gallon 26c	String Beans, Stacocan 15c	Chili Con Carnecan 23c
Prem can 35c	Chicken Noodle Soup, Rancho2 for 19c	Milk—All Brands4 for 39c
	Syrup, Log Cabinbottle 25c	Oats, Mother'spkg. 39c
	Tomato Juice, CHBNo. 5 can 26c	Honey Buttercup 33c
	Cheese, Triolb. 37c	Malted Milk, Thompson 35c

COLUMBIA'S MEAT SAVINGS

Swiss Steak Cut Thick, Young Beef.....lb. 40c Grade A (9 red pts.)	Hamburger, No Cereal (6 red pts.) ...2 lbs. 58c	Pork Chops or Roast End Cuts (6 red pts.) lb. 36c	Young Roasting Hens, Heavy and Medium lb. 47c
--	---	---	---

SPERRY'S

Cheerios 13c	Corn Kix 13c	Wheaties 12c	Softasilk 29c	Drifted Snow \$2.49
----------------------------------	----------------------------------	----------------------------------	-----------------------------------	---

Best Values

IN FINE LIVING ROOM FURNITURE by KROEHLER

TAKE A FULL YEAR TO PAY



2-Piece Suite—Full Spring Unit

Here's an exclusive Kroehler style with graceful lines. It is upholstered in beautiful tapestry and built with famous 5-Star Construction.

\$179.50

New, Improved KROEHLER 2 pc. Suite

Picture this suite in your home. Rich mohair upholstery, deep, soft spring-filled cushions. See it now.

249.50

Over a Score of Suites on Our Floors

Priced at . . 189.50 - 199.50 - 209.50 - 229.50

Genuine KROEHLER SUITES Cost No More Than Ordinary Makes

Square Deal Furniture Co.

H. G. Rainey — Lewis Rainey
Bend
Bond & Minnesota Phone 324