

Blood Donors Visit Portland

Redmond, April 13 (Special)—Twenty-two blood donors from the Redmond vicinity returned from Portland Thursday evening, after making a round trip to the Portland blood donor center. Transportation was furnished. A number of interested Redmond people financed the trip which was made by bus.

Those making the trip were Mrs. Homer Wood, Mrs. B. H. Reese, Mrs. Ella Zitek, Dorothy Edwards, Mrs. Opal Pickles, Mrs. H. C. Hudson, Jean McClay, Mrs. H. P. Eby, Miss Bery Endicott, Hannah Elkin, Bernice Clark, Earl Dexter, Dorothy Channess, Lila Cotes, John Berning, J. H. Beeseley, Mrs. Warren Parr, Dorothy Edwards, Mr. and Mrs. Morris Beck, Florence Howard and Mrs. Mel Bozarth of Powell Butte.



Veterans to Get Special Forms

A special form for use by war veterans, known officially as application R1226, has been received by the local office of price administration office, Mrs. L. N. Skjersaa reports.

Designed to clip the usual red tape attached to food stamp applications by restaurant owners, the newly-printed forms will expedite procurement of supplies for those veterans returning home who wish to engage in private eating establishments.

A full supply of the forms will arrive in the local office within the next few days, Mrs. Skjersaa revealed, and all servicemen with an eye towards a restaurant enterprise are urged to avail themselves of the briefer application form, she stated.



Water Prospects Improve Greatly

Portland, Ore., April 13 (AP)—Surveys show 93 per cent of Oregon's irrigated farm lands have good water supplies in store for 1945, the soil conservation service and Oregon agricultural experiment station reported today.

Water prospects have shown a remarkable improvement in the past month and only a few small localized areas will have deficient supplies.

There appears to be little danger of high water damage in the spring runoff period.

Bishop William P. Remington of Pendleton, Episcopal bishop of the Eastern Oregon mission district, left at top, will be here over the week-end for the annual district convocation and the ordination to priesthood of Edward H. Cook, left below. Assisting in the services will be Rev. G. R. V. Bolster, right above, rector of Trinity Episcopal church, Bend.

Bleaching green-colored oranges with ethylene gas to a beautiful yellow, a process widely used for 20 years, is now estimated to be worth about \$8,000,000 annually to citrus fruit growers in the United States.

Do You Need a Locker? Modern Food Locker Plant Planned For Bend, Says L. H. Helphrey

The latest type food locker system of all-metal construction is planned for Bend, L. H. Helphrey, who will be owner of the plant, announced today. The installation is subject to War Production Board approval, Helphrey said, and at least 300 of the 500 units in the original installation must be ordered in advance. While the government is very interested in food conservation, he said, it can only issue priorities for the construction of needed locker space when at least 60% of the lockers to be installed are rented in advance.

Quick Freezing Unit

A feature of the new plant will be a quick freezing unit which has not been here-to-fore available in Bend. Quick freezing withdraws the heat from the product almost instantly and seals in the natural flavor. It kills bacteria and foods can be kept in their natural freshness for many months.

All-metal lockers and drawers will be used exclusively in the new plant. This type of locker is always brilliantly clean, pilfer-proof and there is far less dehydration of foods stored. Metal lockers came into use at about the start of the war and few installations have been made since that time. According to available information, metal lockers afford users food savings of from \$75 to \$150 a year.

While he was not in a position to announce the location, Helphrey said that the new plant would be in a convenient downtown spot where ample parking space is available. Such a location, he pointed out, would allow patrons to make purchases in local

downtown stores and place them in lockers for future use.

The War Food Administration requires that at least 60% of the new units must be rented before approval will be granted for installation. This means, Helphrey said, that he must have definite orders for 300 units. According to a survey, he said, there are now hundreds of people in and near Bend who need locker space but have been unable to secure it. The WPB insists that renters must be producers of food, that is they must be operators of farms, supervise such operations or those who grow foods normally stored in lockers. Under the later classification, Bend folks and those in rural areas who grow victory gardens could in most cases qualify.

Rent Placed in Escrow

Under the regulation, those who desire a locker shall pay a year's rent in advance and all money received shall be placed in escrow in a bank. In this case, Helphrey said, all checks should be made payable to the Bank of Bend. This bank will hold all money until such time as the lockers are ready for use.

The yearly rent for the door-type all metal lockers is set at \$10 and for the large drawer lockers the rent is \$12.

So that clearance can be received and installation started at an early date, Helphrey urges those desiring locker space to fill in the application and mail it at once. Choice locations will be reserved in the order that applications are received, he said. For further information, telephone 857-J or 113.

If you need a locker... reserve it NOW!

MAIL THIS APPLICATION TODAY

HELPHREY FROZEN FOODS,
P. O. Box 1069
Bend, Oregon.

Enclosed please find check or money order for \$ _____

for rental of () locker(s) at \$ _____ per year. This money is to be held in escrow by the Bank of Bend until the locker plant is officially opened.

Name _____

Address _____

Telephone _____

(Make checks or money orders payable to the Bank of Bend) Yearly advance rental per locker — Drawer type—\$12.00, Door type—\$10.00. Key deposit required when lockers are available.

To Join in Services

Mid-week service, Wednesday, 7:30.

CATHOLIC
(Franklin and Lava)
Rev. Edmund Hyland, Rector
Sunday services, 7:30, 9 and 11 a. m. Masses on week days, 8 a. m.

CHURCH OF GOD
Corner W. Twelfth street and Fresno Ave.
Rev. Fred R. Decker, Minister
Sunday school, 9:45. Preaching service, 11 a. m. Evening service, 7:45 p. m. Prayer meeting and Bible study, Wednesday evening, 7:45.

CHURCH OF CHRIST
(Norway Hall, Galveston and Columbia)
D. E. Scott, Minister
Sunday services: Bible study, 10:00 a. m.; Preaching, 11:00 a. m.; Young Peoples meeting, 7:00 p. m.; Preaching, 8:00 p. m.

FIRST BAPTIST
(Irving and Oregon streets)
Rev. Kenneth A. Tobias
Sunday school, 9:45. Morning worship, 11 o'clock (broadcast over KBND). B. Y. P. U., 6:30. Evening service, 7:30. Wednesday prayer service at 7:30.

FIRST CHRISTIAN
(Fourth street at Newport avenue)
W. L. Palmer, Pastor
Bible school, 9:45 a. m. Morning worship, 11. Evening service, 7:30 o'clock. Prayer service, 7:45 Wednesday, followed by choir rehearsal at 8:30.

FIRST CHURCH OF CHRIST SCIENTIST
(1051 West First street)
Authorized branch of the Mother Church, the First Church of Christ, Scientist, in Boston, Massachusetts. Sunday service, 11 a. m. Sunday school, 9:30 a. m. Wednesday evening testimony meeting, 8 o'clock. Reading room in room 3, McKay Bldg., open to public from 1:30 p. m. to 4 p. m., daily except Sundays and holidays.

FIRST LUTHERAN
(St. Helena place and Idaho)
Morris A. Thompson, Pastor
Sunday school, 9:45. Worship service, 11 a. m. Luther league meets second and fourth Sundays at 5 p. m. Ladies aid, first and third Thursdays, 2:30 o'clock. L. D. R., third Wednesday, 7:30, in homes.

FIRST METHODIST
(Bond and Louisiana)
Rev. Robert Melvina, Pastor
Sunday services, 11 a. m. and 7:30 p. m. Church school and fellowship, 9:45 a. m., and 6:30 p. m. Mid-week services, 7:30 p. m.

FIRST PRESBYTERIAN
(Corner Harrison and Franklin)
R. H. Prentice, Minister
Sunday school 9:45. Morning worship 11. Youth meeting at 6. Tuesday poetry and organ meditation broadcast at 1. Bible study Wednesday at 10 a. m. at the Linton home. Youth choir practice Saturday morning at 10. Services at Redmond at 9 Sunday morning and at Tumalo 2:30 each Sunday afternoon.

JEHOVAH'S WITNESSES
(Kingdom hall, south of Bend, near canal)
Watchtower study Sunday 8 p. m.; Bible book study Wednesday, 8 p. m.; service meeting Friday, 7:45.

LATTER DAY SAINTS
(Corner Hill and Irving streets)
Carl Powell, President
Sunday school, Sunday, 10 a. m. Sacrament meeting, Sunday, 6:30 p. m. Fireside chat, Sunday, 7:30 p. m. Relief society, Tuesday, 2 p. m. Primary, Thursday, 4 p. m.

Convocation

(Continued from Page One)

The Church in the Post-war World.

The Sunday program will commence with a celebration of Holy Communion at 8:00 a. m. and at 9:30 a. m. delegates will assemble with the local congregation to witness the ordination to the order of priesthood of Rev. Edward Herick Cook (deacon), who for the past year has assisted Rev. G. R. V. Bolster in the work of the Central Oregon mission field. This ancient ceremony, which reaches back to the days of the apostolic church, will be administered by Bishop Remington, with all clergy laying hands on the ordinand. The sermon will be by the bishop, and the local rector will present the candidate for ordination. Arrangements have been made to care for a capacity congregation and worshippers are urged to be punctual. Immediately following the ordination service, the rite of holy baptism will be administered by the bishop to Martha Alden Cook, infant daughter of Rev. and Mrs. Edward H. Cook. Luncheon will be served to the delegates at the parish house at 12:30 p. m. and the final adjournment will be at 1:30 p. m.

Interested members of the general public are welcome at all services and sessions of convocation, those in charge announce.

The famed Kentucky bluegrass isn't blue. It takes on a bluish tinge only in early spring when it is in bloom.

Church Announcements

ASSEMBLY OF GOD
(2nd and Greenwood)
Rev. L. H. Sheets, Minister
Sunday Services: Sunday school 9:45 a. m. Devotional service 11 a. m. Evangelistic service 7:45 p. m. Mid-week Service — Friday, 7:45 p. m., regular preaching service, Radio broadcast, Thursdays 1 to 1:30 p. m. over KBND. Rev. Sheets and his eight year old daughter, Roma Jeanne, will be in charge of the broadcasts.

CHRISTIAN AND MISSIONARY ALLIANCE
(320 Lava Road)
William Schwab, Pastor
Sunday school, 9:45; morning worship, 11 o'clock. Young people's meeting, 6:30 p. m.; Evangelistic service, 7:30 p. m.; Bible study and prayer, Wednesday, 7:30 p. m.

CHURCH OF THE NAZARENE
(1745 East First street)
Raymond E. Kiel, Pastor
Sunday school, 9:45 a. m. Worship service, 11 o'clock. Junior church, 11 o'clock. Y. P. meeting, 6:45. Evangelistic service, 7:30.

Tune in Sundays the Old Fashioned Revival Hour KBND 10-11 p. m. International Gospel Broadcast Charles E. Fuller, Director

Because None Are Spared—

Be prepared for the inevitable. Not one of us can go through life without losing someone dearly beloved. When that time comes—all our facilities are available to you—plus every means of economy.

FOR AMBULANCE SERVICE PHONE 118

Niswonger and Winslow Morticians

MISSIONARY BAPTIST
(East Greenwood)
Elder L. H. Boswell
Sunday school, 10 a. m. Morning worship, 11. Evening message, 7:45 p. m. Prayer meeting, Wednesday, 7:45 p. m. Radio sermon, KBND, Sunday, 6 to 6:30 p. m.

PENTECOSTAL MISSION
(1215 Lafayette street)
Harriet E. Marling, Pastor
Sunday school, 10 a. m. Morning worship, 11 a. m. Broadcast, 5:15 p. m. over KBND. Young people's service, 7 p. m. Evangelistic service, 8 p. m. Young peoples meeting Tuesday night. Wednesday, evangelistic service, 8 p. m. Saturday, children's church, 10 a. m. at 1414 Fresno. Saturday, street service, 7:30 p. m.

PRESBYTERIAN
(Westminster Orthodox)
(Newport avenue and Drake road)
Robert E. Nicholas, Minister
Bible school, 9:45 a. m. Morning worship, 11 o'clock. Intermediate and senior Madsen league 6:30 p. m. Evening service, 7:30 p. m. Wednesday, 7:30 p. m., prayer meeting and Bible study.

PILGRIM
George Banks, Pastor
(1314 Albany)
Sunday school, 9:45 a. m. Morn-

ing worship, 11 a. m. Young people's hour, 6:30 p. m. Evangelistic service, 7:30 p. m. Prayer service, Wednesday, at 7:30 p. m.

SEVENTH DAY ADVENTIST
(Harrison and Franklin)
Wayne A. Soreven, Pastor
Sabbath school, 9:45 a. m. Preaching service, 11 a. m. Prayer meeting Wednesday, 7:45 p. m.

TRINITY EPISCOPAL CHURCH
(Head of Wall street)
Rev. George R. V. Bolster, Rector
Holy Communion each Sunday at 8 a. m., except first Sunday at 11 a. m. only, and each Wednesday, with intercession for Allied Forces at 10 a. m. Morning prayer each Sunday at 11 a. m. Church school each Sunday, Senior, 10 a. m.; Junior, 10:45 a. m. Young People's Fellowship each Sunday at 7:30 p. m. Choir practice each Wednesday at 7:30 p. m. Baptisms, weddings and other services by arrangement with the rector.

TRINITY LUTHERAN
(Missouri Synod)
(Galveston and Federal)
Donald W. Hinrichs, Pastor
Sunday school, 9:45 a. m. Worship, 11 a. m.

Grass seed is not injured by freezing even in extreme cold.

WELCOMES 1,200 VISITORS
Hot Springs, Ark. (AP)—The Hot Springs Rotary Club, composed of 63 business and professional men, last year entertained more than 1,200 visiting members and guests. At one meeting, in March, 1944, there were members present from Canada, Mexico and 30 states.

Schilling
PURE Vanilla
Flavor that won't freeze out

Doing a big job and doing it well

COURTEOUS, calm and competent is a particularly good description of the telephone operator these days. She has a big job to do and she's doing it well.

She appreciates your help, especially when you're on a crowded Long Distance line and she must ask you to "Please limit your call to 5 minutes."

Buy War Bonds for Victory

THE PACIFIC TELEPHONE AND TELEGRAPH COMPANY

Business Office 841 Bond St. Telephone 501

"Get in Line There Kids!"
Yes, we almost need a Little Traffic Cop to handle the crowds of kiddies coming to our Big Free

Baby Contest

AND NO WONDER! THERE'S NOTHING TO BUY! THERE'S FREE PICTURES FOR ALL AND—

31 CHANCES TO GET IN ON THE \$250 IN PRIZES YOU CAN'T LOSE!

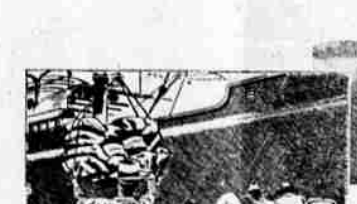
To enter contest all you do is bring your baby to our studio and have pictures taken. There is no obligation whatsoever on your part but we advise you to come in now to avoid the last minute rush.

Evergreen Studios

"PORTRAITS OF DISTINCTION"

906 Wall... Next to USO... Phone 89... Bend
Open Weekdays — Closed Sundays
9:30 a. m. to 6 p. m.
Studios also in Klamath Falls, Medford, Albany, Portland.

Why my coffee gives you an extra flavor "lift"



WE BLEND many coffees to give you the exclusive Edwards flavor—the choicest coffee beans, selected for size and color—the top of the crop from Latin America.



TO BRING out the full, natural coffee flavor, we roast by the controlled, low-heat Thermo process... then grind immediately and vacuum-pack in glass to capture all the flavor.

EDWARDS COFFEE

Featured at Safeway Stores

Spots FOR having FUN

Here's Where to Go for fun—for entertainment to soothe weary nerves—for fine foods and needed relaxation.

Dine and Dance

- Fried Chicken Dinners
- Sandwiches

Glen Vista Club

3 1/2 Miles North on Bend-McKenzie Highway
Phone 777-W

DINING

POLLY'S CAFE
Open All Nite
Breakfast Orders
Served 24 Hours a Day
Good Coffee — Fine Foods—Good Service

FOUNTAIN
Luncheons — Sandwiches
Home Made Pies
OPEN EVERY DAY 'Til 10 p. m.
The Dairy Store
135 Minnesota

MOVIES

CAPITOL
"THE BEST IN ENTERTAINMENT— ALWAYS!"
Continuous 1 to 11—Sat. Sun.

TOWER
ALWAYS 2 HITS
Continuous 1 to 11—Sat. Sun.