

# MANCHU FEARS PERIL OF REDS

## Bolshevism Penetrating China, Stated

### War Lord Makes Bid For Aid from Powers In Interview With R. W. Howard

MUKDEN, Manchuria, Sept. 29.—Bolshevism is stealthily penetrating China, while foreigners seemingly are not yet awake to the menace, General Chang Tso Lin, Manchurian war lord, declared in an interview with Roy W. Howard of the Scripps-Howard newspapers, at his private palace here.

Discussing the forthcoming conference between China and the great powers, Shang Tso Tin declared that definite action by the conference in revising customs and modernizing unilateral treaties was imperative. A deadlock, he declared, would furnish propaganda for the bolsheviks.

"Moscow which threatened to attempt the overturn of European governments, is now directing its entire force toward China," the ex-bandit Manchurian war chief said. "Russia is anxious to see a deadlock and is pointing out that it successfully repudiated its old debts and treaties and it is preaching that it is possible for China to duplicate the Moscow formula. Consequently, a deadlock would menace not only China but all governments."

"Innoculate more than 4,000,000,000 Chinese with Russia's political plague and no nation will be able to successfully quarantine it."

**Munitions Brought In**  
To the suggestion that in America the influence of bolshevism is an important factor, some times appeared somewhat dubious, Chang Tso Lin replied that while bolshevism is normally incompatible with Chinese psychology, some leaders are using

It as an instrument and are receiving assistance from Moscow. Certain northern highways are closed for secret transportation of munitions from Russia, he said.

The Manchurian army, if properly supported, morally and financially, can deal with the bolshevist problem, the Manchurian leader suggested.

"I regret that in the past the powers have not supported the efforts of myself and others in the interest of effecting efficient centralization," he said. "Foreign disinclination to support any individual should be terminated and, instead, all should unite upon a leader strong enough to deal with the situation and wise enough to enable China to meet her just obligations and to work for her salvation on lines equitable to herself and to the world."

### Careful Investigation Is Started In Arson Case

(Continued from page 1)

highway between that city and Bend, so the search was shifted to the vicinity of Deschutes, in the belief that he might have gone there to board the night train.

No trace of the man was found after an extensive search in that vicinity.

Meanwhile reports that the man had been seen in various parts of Bend, came repeatedly to the police station, and each one was checked up with the invariable result that the suspect was found to differ from the description given, and each one accounted for his whereabouts at the hour the attack was alleged to have been committed.

### Light Vote Now Likely In Wisconsin's Election

MILWAUKEE, Wis., Sept. 29.—A light vote seemed probable in the Wisconsin senatorial election today on strength of reports from polling places shortly after noon.

Weather conditions were ideal. Apathy on the part of the voters was ascribed to the accepted certainty that Robert M. La Follette, Jr., would be elected to succeed his father in the United States senate.

Candidates, who have been conducting an active campaign, closed up with a flourish last night. Robert M. La Follette, Jr., made his last campaign address at Waukesha, while Edward F. Dithmar, Baraboo, independent republican candidate, and John M. Work, Milwaukee, socialist nominee, ended with speeches in their home towns.

**ARM OF BOY IS BROKEN**  
Jack Eagles, six year old son of Mr. and Mrs. Thomas Eagles, suffered a fracture of his left arm at noon today when playing on a swing at Third and Scott streets.

# Easy Terms

No need to pay cash for your Gulbransen. Just a few dollars down will put one in your home.

The prices in this ad are cash prices. But any Gulbransen can be purchased on our convenient payment plan. We will gladly give you the full details.

Don't deprive yourself of the pleasure of Gulbransen ownership when so few dollars down will bring the music of the entire world to you at once, to be personally played by you with your own expression.

# Pedal Touch



You register your touch, through the pedals, when you play the Gulbransen, just as you would if you touched the keys with your fingers.

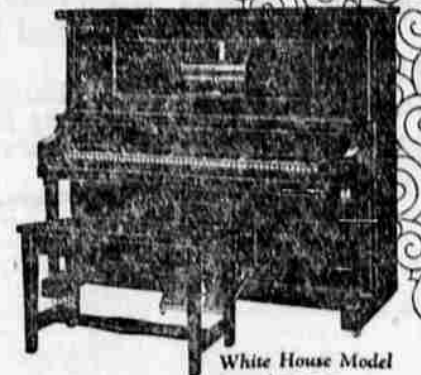
The Gulbransen will do, musically, things that you never believed possible with any musical instrument of its type.

Remember the Gulbransen is a Registering Piano, registering your exact touch and expression—it is not an ordinary player-piano.

Expect big things, musically, of the Gulbransen; it will not disappoint you. Gulbransen "pedal touch" gives you artistic piano music without a trace of the mechanical—it gives you the thrill of personally playing music with your own expression.



Suburban Model \$530



White House Model \$700



Country Seat Model \$615



Community Model \$450

Electric Reproducing Models \$770—\$855—\$940

## This Week—Choose Between These 4 Beautiful Gulbransen Models

There's the splendid White House model—with a tone that captivates the musicians—an instrument worthy of its fine name—Gulbransen "White House" model.

Also the "Country Seat" model—sturdy and substantial; the "Community" model, economical and satisfactory.

And then the "Suburban" model—the popular favorite! It has been adjudged the most for the money obtainable in musical instruments.

You'll think so, too, when you see the Suburban. It's a winner—it will prove to be an investment in happiness for you and your family not for one, two, or three years—but for many years.

If it were not for the tremendous capacity of the Gulbransen factories—45,000 instruments a year—and the economical manufacturing that is the result—it would be necessary for us to get \$200 or \$300 more for the Suburban model.

# McCORD MUSIC COMPANY

Will you please send me the name of the nearest McCord Music Company store to my home?  
 Your Name \_\_\_\_\_  
 Street Address \_\_\_\_\_  
 Town and State \_\_\_\_\_

# Don't Gamble On Cars--

When you go in to buy a car you are quite sure what kind of a car that you want and you know the reputation of the firm with whom you are dealing. This reputation is not just happen chance but has taken years of painstaking effort and thought to get it. It is something to be proud of, a quality that every firm or man must have before they can succeed in the business world.

We are proud of the reputation that we have gained in this town and are ever striving to keep it at the highest point possible. That is the reason we can sincerely offer you these used cars because we know just what they are and do not misrepresent them in any manner whatsoever.

- LOOK THESE OVER**
- 1924 Ford Touring**  
Fine mechanical shape, new paint, good tires. A better buy than a new one.
  - 1923 Ford Touring**  
Shock absorbers, new tires, a dandy running car that will render a lot of real service.
  - 1921 Buick Six Touring**  
A rebuilt, good looking, trustworthy car that you and your family can truly enjoy.
  - 1923 Chevrolet Touring**  
Lots of extras, nearly new oversize cord tires, in fine shape and equipped with a disc clutch if you so desire.

**Bend Garage Co.**  
Catty-Cornered from Pilot Butte Inn  
Open All Night Phone 109

## Says New Road Will Be Listed With Best

(Continued from page 1)  
at a point just south of Crescent. From Crescent to La Pine, cars are permitted to follow the new grade. This grade affords some excellent driving, just as good as a well constructed market road, according to the county commissioner. The high-

way from Paulina prairie to a point about four miles south of Lava butte is graveled; and is said to be a fine stretch of road.

The last section of The Dalles-California highway to be let to contractors—the La Pine-Crescent section—is being cleared, according to Innes. Even on this section, automobiles can travel over the new grade. Timber is being removed and stumps are being burned on this section by a number of crews.

Graveling operations are being carried on north of Beaver marsh and on a stretch north of La Pine. Although a number of heavy trucks are passing over these two stretches, traffic is being inconvenienced little.

When completed, the Bend-Klamath Falls section of The Dalles-California highway will be better than any part of the highway from Bend to the Columbia river. It is Innes' belief.

Completion of The Dalles-California highway in 1926 also includes the completion of the high bridge across Crooked river canyon near Trail crossing. Bridge work has already started.

Pythian Sister dance, Wednesday, September 30th at Sather Hall, for Knights, Dookies and ladies. Good music and refreshments. No admission charge. 85-94-96-97c



—the real autocrat of the breakfast table!

Leave it to His Royal Highchair Highness to "be strong" for Carnation Mush! And mother, naturally, is more than glad to approve his cereal-choice. For she knows this delicious all wheat cereal supplies the growth and health elements Nature intended for thriving youngsters.

For baby's better breakfast [and for baby's quick-to-digest supper] Carnation Mush!



# Albers Carnation Mush

"Albers stands for Better Breakfasts"

**WOOL STILL MOVING**  
(U. P. Lensed Wire to The Bend Bulletin)  
BOSTON, Sept. 29.—Medium grades of wool continue to move in fairly large quantities, owing to the tremendous increase in the worsted lines. Medium grade wools have moved up from one to two cents a pound during the last few days. Texas reports sales of mohair 2,000,000 pounds at prices ranging from 55 to 60 cents with the clip estimated at around 3,500,000 pounds.

**WILBUR'S SCALP ASKED**  
(U. P. Lensed Wire to The Bend Bulletin)  
NEW YORK, Sept. 29.—Curtis D. Wilbur is called upon to resign his post as secretary of the navy, in the leading editorial in today's New York World.

**FINCH BROS.**  
General Building Contractors  
Something Beautiful and Different—Guaranteed Stucco  
WILL FIGURE ANY JOB  
Phone 455

**DR. ROY REYNOLDS**  
Chiropractor  
O'Kane Bldg., Phone 480

**D. B. CLAY MOTOR CO.**  
CHRYSLER DEALER  
216 Greenwood Phone 288-W

**NOTICE**  
WE HANDLE STEER BEEF ONLY  
Quality Meats  
Phone 92  
OREGON MARKET  
Miner Building  
Wall Street

**Hall's Catarrh Medicine** will do what we claim for it—rid your system of Catarrh or Deafness caused by Catarrh.  
Sold by druggists for over 40 years  
F. J. CHENEY & CO., Toledo, Ohio

Phone 269-W  
**TRUCKS AND CARS FOR HIRE**  
DRIVE THEM YOURSELF  
Oldsmobile Used Car Lot  
Reasonable Prices  
FRANK REED, Mgr.  
Cor. Bond and Greenwood Bend, Ore.

**O. S. PHILLIPS, M. D.**  
Eye, Ear, Nose and Throat Specialist  
Rooms 17-19 O'Kane Bldg  
Hours: 9 to 12, 2 to 5, 7 to 8  
Phones: Office 175 J, Res. 120  
Lumberman's Hospital Certificate Good Here