

BEND TRAIN SCHEDULE

Oregon Trunk Arrives 7:00 A. M. Leaves 7:30 P. M. O. W. R. & N. Arrives 7:30 P. M. Leaves 7:00 A. M.

LOCAL NEWS ITEMS

Mr. and Mrs. Leland Parker left this morning for Paisley. E. L. Clark, La Pine merchant, was a visitor in Bend this morning. Mr. and Mrs. Hardy Allen of Sisters were visitors in Bend today.

CAPITOL TUESDAY WEDNESDAY

THE SWAN

ADOLPHE MENJOU RICARDO CORTEZ FRANCES HOWARD BUCHOWETZKI A Grandstand Picture

A gorgeous, polished production of Molnar's celebrated play which scored a phenomenal hit on Broadway and wherever played.

Last Time Tonight BETTY BRONSON in 'ARE PARENTS PEOPLE'

GRAND TUESDAY AND WEDNESDAY A glowing romantic drama of the Nile-



PRISCILLA DEAN A Cafe in Cairo

A colorful story of a fascinating dancing girl who defied the dictates of the Shiek for love of a dashing American.

Last Time Tonight 'THE LITTLE FRENCH GIRL'

Large Icicles Formed At Bachelor Lookout

Icicles two feet in length formed on the eaves of the lookout tower on Bachelor butte and on telephone wires near the summit of the high Cascade peak in the recent storm.

Mrs. Lloyd, who was accompanied to the top of the butte by two friends, Miss Lena and Miss Anna Gmahl, says that the temperature fell far below the freezing point when the storm swept over Bachelor butte.

Mrs. Lloyd reports that 42 visitors had climbed to the summit of Bachelor butte up to last week end. Very little of the snow which fell last winter remains on the butte.

Miss Benita Ward Cane and John J. De Rushia Married

Miss Benita Ward Cane, employed for several years in the office of the county clerk here, and John J. De Rushia, an employe of the Brooks-Seaplan Lumber Co., were married this morning at 7 o'clock at the St. Francis Catholic church.

SCHOONER'S CREW SAVED

NOHE, Alaska, Aug. 17.—The American motor schooner Ram was wrecked and is a total loss, but her crew of four was saved, according to radio information received today from the Amundsen ship Maude, now en route here after three years in the arctic ice.

STECK TAKES LEAD

WASHINGTON, Aug. 17.—Tabulation of the Iowa senatorial election ballots from 53 counties today gave Senator Smith W. Brookhart 245,572 and his democratic opponent, Daniel F. Steck, 216,699.

AUBURN DIVIDEND GIVEN

AUBURN, Ind., Aug. 17.—The Auburn Automobile Company today declared a 100 per cent stock dividend on the common stock of \$25 per value, increasing their capital to \$1,500,000 from \$750,000.

PORTLAND WHEAT PRICES

PORTLAND, Aug. 17.—Wheat, hard white, \$1.56; soft white, \$1.56; western white, \$1.55; hard winter, \$1.53; northern spring, \$1.43; western red, \$1.51.

News of the Markets

RAIL STOCKS SHOWN FAVOR

New Highs Are Reached by Industrials

(Wall Street Journal Financial Review) NEW YORK, Aug. 17.—Trading on the stock market today displayed a distinct tendency to favor the rails at the start of the new week.

New highs on the movement were reached by numerous industrials, including Mack Truck, White, Westinghouse Air Brake, Allis Chalmers, American Smelting and International Harvester.

The market closed higher. Closing prices included:

U. S. Steel 122 1/2, up 1/2; Mack Truck 229 1/2, up 1/2; Westinghouse 75 1/2, up 1/2; Chicago Pneumatic Tool 109 1/2, up 1/2; Westinghouse Air Brake 139 1/2, up 1/2; Dupont 160 1/2, off 1/2; Allis Chalmers 88, up 1/2; International Harvester 124 1/2, up 1/2; New York Central 122, up 1/2; B. & O. 81 1/2, up 1/2; Reading 89, up 1/2; Great Northern 75 1/2, up 1/2; N. & W. 139 1/2, up 1/2; M. K. & T. 41, up 1/2; Rock Island 50, up 1/2; L. & W. 119, up 1/2; Western Pacific 38 1/2, up 1/2; New Haven 37 1/2, up 1/2; Pennsylvania 47 1/2, up 1/2; C. & N. W. 69, up 1/2; A. T. & T. 140; Texas Company 47 1/2.

PORTLAND LIVESTOCK MARKET

PORTLAND, Aug. 17.—Cattle—Receipts, 1,900; tone of market, steady; steers, medium, \$7.50@8.25; common, \$6@7.50; heifers, medium and common, \$4@6.50; beef cows, medium and common, \$3.25@3.75; canners and cutters, \$1.50@3.25; bulls, sanners and bolones, \$2@4; calves, medium and choice, 100 lbs. down, \$7.50@9.

Hogs—Receipts, 1,275; tone of market, steady; medium, good and choice, 160 to 200 lbs., \$14.75@15.50; 200 to 250 lbs., \$14.25@15.50; 250 lbs. up, \$13.50@15; packing, smooth heavy, \$10.50@12; slaughter pigs, \$14@15; feeders and stockers, \$14@15.25.

Sheep—Receipts, 2,310; tone of market, steady; lambs, 84 lbs. down, medium and choice, \$10.50@12.25; heavyweights, medium and choice, \$8.50@10.50; culs and commons, all weights, \$6.50@8; wethers, \$6.50@8.50; ewes, common to choice, \$3@5.

DAIRY AND POULTRY

(U. P. Lensed Wire to The Bend Bulletin) PORTLAND, Aug. 17.—Butter—Cube extras, 50c; standards, 48c; prime firsts, 46c; firsts, 45c.

Eggs—Extras, 42c; firsts, 34c; pullets, 32c; current receipts, 29 1/2c. Butterfat—Country station-delivery basis, best churning, 52c; No. 2 grade, 46c; Portland delivery, best churning cream, 55c.

Cheese—Selling price, Tillamook county triplets, 30@31c; loaf, 31@32c; Oregon triplets, not branded, 26c; Tillamook f. o. b. selling prices, triplets, 27c; loaf, 28c; Coos county cheese, selling price to retailers, triplets, 29c; loaf, 30c.

Live poultry—Selling prices, heavy hens, 21c; light to medium hens, 14@15c; broilers, colored, 1 1/2 lbs. up, 25c; white, 20@21c; spring ducks, 26@27c.

Milled—Price delivered, millfeed, \$24@27 per ton; middlings, \$42@43 per ton.

SAN FRANCISCO MARKETS

(U. P. Lensed Wire to The Bend Bulletin) SAN FRANCISCO, Aug. 17.—Patatoes—Rivers, fancy wharf, \$2.25@2.35; sweets, 6@7c; No. 2, 4@5c. Poultry—Broilers, 3/4 to 1 1/2 lbs., 30@32c; colored, 1 1/2 to 1 3/4 lbs., 28@30c; colored young roosters, 3 lbs. up, 33@35c; friars, 27@30c; old roosters, 15@17c; Leghorn old roosters, 12@14c; Leghorn hens, 2 1/2 to 3 lbs., 19@20c; 3 lbs. up, 21@26c; large colored hens, 29@30c; turkeys, nominal.

Grain—Barley, feed, \$1.50@1.65; shipping, \$1.75@1.90; wheat, milling, \$2.75@2.80; oats, red feed, \$1.60@1.70. Livestock—Cattle, tone of market, steady; steers, good, \$7.50@8; cows, good, \$5@5.50. Calves, tone of market, steady; over 260 lbs., \$3.50@10.50. Hogs, tone of market, firm; 150 to 200 lbs., \$15.50@16; medium, \$14.50@15. Sheep and lambs, tone of market, steady; lambs, \$11.50@13; ewes, \$2.50@6; wethers, \$7@8.50.

WOOL PRICES SAG

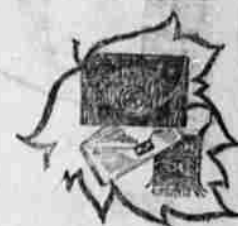
BOSTON, Aug. 17.—The sagging tendency of prices is due to the apathetic tone to the goods markets. The size and volume of the business in men's lightweight goods has not yet been determined, although manufacturers are holding out for lower prices. Mill stocks of raw wool are said to be below normal. Western primary markets are firm. Fine and fine medium staple territory wool is quotable \$1.30@1.35, fine unwashed delaines are held at 54 to 55 cents. Australian merinos 64s to 70s quoted at \$1.15@1.20. A. A. pulled wool is quoted at \$1.30@1.35 scoured basis.

LIBERTY BOND PRICES

NEW YORK, Aug. 17.—3 1/2%, 100.28; first 4 1/2%, 101.28; second 4 1/2%, 100.35; third 4 1/2%, 101.12; fourth 4 1/2%, 102.0; new 4 1/2%, 106.3.

MANNHEIMER'S THE QUALITY STORE OF BEND

Early Fall Needs!



Handbags New for Fall

Interesting groups, mirroring the very newest in hand bags. Fashion is impartial to size and kind—we see a diversity of types in many leathers and silks in Kodak Shape, Vanities, Envelope and Under-arm Bags. Color so important a style note this season is much in evidence in this important accessory of dress.

\$1.69 - \$1.98 - \$2.98 \$3.48 - \$3.98 - \$4.98



New Perrins Gloves

Colorful and decorated in clever and unusual ways, these new fall gloves in tailored and flare top cuff styles are exceptionally noteworthy for their true fitting qualities and attention to details. Size and color range are complete in every style.

\$3.35 - \$3.95 - \$4.50 \$4.98

Sweaters

In the new Turtle Neck, Tili-cum and Button Front styles. In plaided and striped brushed wool styles and Jacquard worked—

\$3.98 - \$4.95 - \$5.95 \$6.50 - \$7.95



Fall Neckwear

New jabots and frilled panelings in white and ecru.

\$1.50 - \$1.75 - \$1.98 \$2.48 - \$2.98

Windsor Ties

In a charming color selection, 35c - 49c - 59c

Double Row Fur Panelling

\$1.50 to \$1.95 yard

Band Top Fur Edging

85c yard

Another Lot Just In

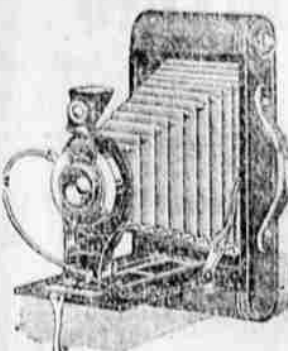
Allen A Chiffon Hose

95c pair

3 pairs, \$2.75

A complete color range in this popular chiffon hose; white they last, 95c pair; 3 pairs, \$2.75.

Do You Own One of These?



A Kodak is the only means by which you can keep eternally the pictures and scenes that you see in every day life. Priced from \$6.50 up. SYMONS BROS. Jewelry and Art Store O'Rano Bldg. Oregon Ave. 'Where Good Pictures Are Made'

SPECIAL Permanent Waving \$20.00 a head August 12 to August 22 inclusive, at Mrs. Muller's Beauty Parlor 140 Oregon St. Phone 352-W

COMING THIS WEEK COLLEEN MOORE in Sally Ziegfeld's greatest musical comedy hit! And Colleen Moore makes it her supreme achievement.

River Terrace Co. LOTS For less than half the price you can purchase in other towns in the northwest. We have kept these prices down, but on the first day of October we will raise prices 20 per cent. River Terrace is a restricted district. No shacks allowed. Easy Terms River Terrace Co. J. A. EASTES, President and Sales Manager 124 Oregon St. Phone 32



How to Keep Cool

With millions to spend on luxury, the princes of India found no better way to keep the air cool, and to ward off gnats and flies, than the creaking, feeble "punkah" pulled by hand.

You can have a much better breeze for a tiny fraction of the cost. You can get a General Electric fan for a few dollars and you can keep it running all day for 5 cents.



The General Electric Company is working with the electric light and power companies of America to make all our homes, offices and factories, better and more healthful places in which to live.

Bend Water Light & Power Company This advertisement is reproduced through the courtesy of the General Electric Company