

BEND TRAIN SCHEDULE
Oregon Trunk
Arrives 7:00 a. m.
Leaves 7:30 p. m.
O. W. R. & N.
Arrives 7:30 p. m.
Leaves 7:00 a. m.

LOCAL NEWS ITEMS

Maximum temperature, yesterday, 87 degrees.
Minimum temperature this morning, 49 degrees.

The son born to Mr. and Mrs. P. J. Padden July 16 has been named Frederick.

Mr. and Mrs. George H. Bulck have named their son, born July 12, Eugene.

C. M. Redfield and family returned to Bend last night after visiting relatives in Albany for the past week.

Mr. and Mrs. Alfred J. Olson, parents of a daughter born July 21, have named the youngster Esther.

C. P. Becker was a visitor in Bend this afternoon from his ranch just northwest of Tumalo.

Mr. and Mrs. E. D. Dunn of Tillamook and Herman Hawkins of Portland were guests of Rev. and Mrs. Frank James Thursday.

Dr. and Mrs. E. M. Palmer and children, and Miss Ruth Akin, from Wichita, Kansas, are visiting in Bend at the home of Dr. and Mrs. E. E. Gray.

The Neighbors of Woodcraft will hold their regular meeting tonight in the K. of C. hall at 8 o'clock. It is announced. Visiting members will be welcome.

Vernon R. Marshall, dyeing expert, recently arrived in Bend from Seattle and has accepted a position with the City Cleaners.

The Baptist ladies will hold a food sale at O'Donnell's market Saturday morning, beginning at 10 o'clock, it is announced.

Mr. and Mrs. Roy F. Clifford have returned to their home in Bend from a two weeks' business and pleasure trip through Oregon and Washington. They attended the Knights Templar meeting in Seattle and the Luyers' week in Portland.

Bible school for the children of the First Lutheran church will be held at 10 o'clock Saturday morning in the church building on Wall and Idaho. W. T. McDonald, county agriculturalist, was in Bend this morning, visiting several farms in the vicinity of this city.

Cecil V. Aker is a member of a party of Bend people who planned to leave today for the Taylor barn country to pick blackberries.

R. E. Johnson was a member of a party of Bend people who left today for Butte lake and vicinity on a camping trip.

CARD OF THANKS

We wish to thank our friends for their kindness and for the many floral offerings during our late bereavement.

Eld Gentry and Family.

SAN FRANCISCO MARKETS

(U. P. Leased Wire to The Bend Bulletin)
SAN FRANCISCO, Aug. 7.—Potatoes—Rivers, fancy wharf, \$2.25@2.35; No. 2, 5@6; sweets, 7@8c.

Poultry—Broilers, 3/4 to 1 1/4 lbs., 28@29c; colored, 1 1/2 to 1 3/4 lbs., 28@30c; fliers, 27@30c; colored young roasters, 3 lbs. up, 33@35c; old roosters, 15@17c; Leghorn old roosters, 12@14c; Leshora hens, 2 1/2 to 3 lbs., 17@19c; 3 lbs. up, 21@26c; large colored hens, 29@30c.

Grain—Barley, feed, \$1.50@1.65; shipping, \$1.75@1.90; wheat, milling, \$2.70@2.75; oats, red feed, \$1.55@1.65.

Livestock—Cattle, tone of market, steady; steers, good, \$7.50@8; cows, good, \$5@5.50. Calves, tone of market, active and steady; over 260 lbs., \$8.50@10.50. Hogs, tone of market, steady; 150 to 200 lbs., \$15.50@16; medium, \$14.25@14.75. Sheep and lambs, tone of market, steady; lambs, \$11.50@13.50; ewes, \$3.50@6 wethers, \$7@8.50.

The sea covers three-quarters of the surface of the earth.

EXTRA SPECIAL
23-piece Lustre Tea Sets

\$9.85 EACH
See Our Window For Display

SYMONS BROS.
Jewelry and Art Store
O'Kane Bldg. Oregon Ave.

"Where Good Pictures Are Made"

Thomas Meighan

"Old Home Week"

You'll be talking about this big comedy drama next year at this time
Be Sure You See It

CAPITOL TONIGHT and Saturday
Saturday Matinee 2:15

An astonishing film adapted from the magazine story "When Smith Meets Smith" by Meredith Davis. Not merely a western but a drama of the great open space.



Beyond the Border



A Stromberg Production Directed by Scott Danlip

The fastest two-gun westerner who ever rode a horse or threw a lariat supported by a wov of a cast.

GRAND TONIGHT-SATURDAY

WOOL DEMAND FAIR

(U. P. Leased Wire to The Bend Bulletin)
BOSTON, Aug. 7.—Moderate business developed this week in the wool market. There was an occasional shading of prices and there seems to be evidence of a little more pressure, which is featured in some concessions in prices. The reaction from the high so far is very light and general demand is quite steady. Fine straight combs, 55@56c; half blood, 53@54c; quarter blood, 51@52c; common, 44c.

LIBERTY BOND PRICES

(U. P. Leased Wire to The Bend Bulletin)
NEW YORK, Aug. 7.—3 1/8s, 100.22; second 4 1/8s, 100.23; fourth 1 1/2s, 102; new 4 1/8s, 105.31.

Coming to the CAPITOL SUNDAY



The LADY who LIED
Edwin Carowe's biggest and best

with LEWIS STONE VIRGINIA VALLI NITA NALDI

Injured Mountain Climber Is Carried From Jefferson

(U. P. Leased Wire to The Bend Bulletin)
PORTLAND, Aug. 7.—Mountain climbers were bringing John D. Scott, Portland, leader of the Mazamas Mountaineers club, to Portland today from Mount Jefferson, where he fell 300 feet into a crevasse in the White Water glacier yesterday.

He suffered a broken nose, many bruises and possibly internal injuries.

DAIRY AND POULTRY

(U. P. Leased Wire to The Bend Bulletin)
PORTLAND, Aug. 7.—Butter—Cubs extras, 50c; standards, 49 1/2c; prime firsts, 47c; firsts, 45c. Eggs—Extras, 35c; firsts, 34c; pullets, 32c; current receipts, 30 1/2c.



News Of The Markets

STOCK MARKET STRONG AGAIN

Vigor Displayed In Rail Advance

(Wall Street Journal Financial Review)
NEW YORK, Aug. 7.—Aggressive strength was maintained in today's market under the stimulus of urgent yubring of United States Steel, which ferged to the highest levels attained since the break late last winter and in the early spring. With the principal industrial stocks moving vigorously ahead, the whole market gained momentum on the up side and hullish demonstrations in pool controlled issues grew increasingly enthusiastic. Rails participated in the forward movement with the greatest vigor displayed in several months. In view of the buoyancy of the general list, Little thought was given to the increase of \$70,000,000 which took place in the last week in bills rediscounted at the Federal Reserve Bank of New York.

It is this situation which the rise in stock prices in the last two months has been foreshadowing and with this comforting combination many important interests were inclined to advise a cautious attitude.

The market closed higher. Closing prices included:

U. S. Steel 122 1/2, up 3; American Can 218 1/2, up 3 1/2; Mack Truck 195,

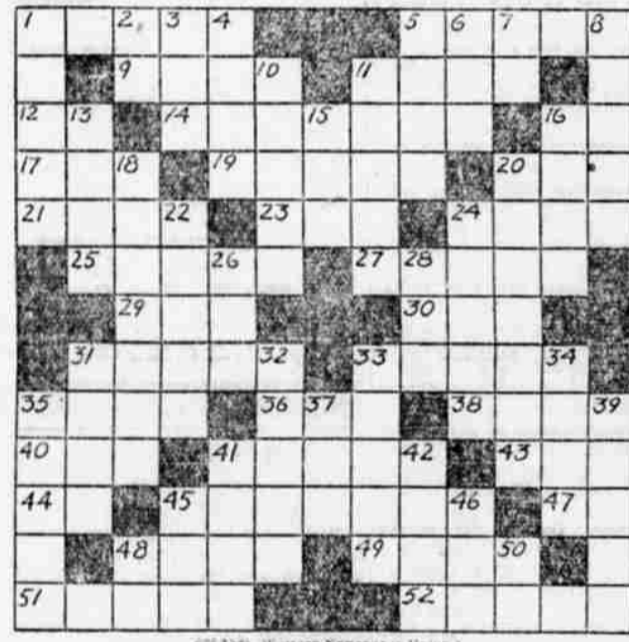
up 6; General Electric 310, up 1 1/2; North American 59 1/2, up 1 1/2; Baldwin 113 1/2, up 2 1/2; American Locomotive 111 1/2, up 2 1/2; General Motors 93, up 1 1/2; Montana Power 92 1/2, off 1 1/2; Midvale Steel pfd. 141, up 9; General Railway Signal 245, up 7 1/2; Internal Combustion Engine, 48 1/2, up 3 1/2; U. S. Rubber 57 1/2, up 2 1/2; Havana Electric 190, off 5 1/2; Glidden 24, up 2 1/2; White Motors 59 1/2, up 1; New York Vanners 53 1/2, up 3 1/2; Marland 44 1/2, up 1 1/2; Pan American B 68 1/2, off 1 1/2; C. & O. 100 1/2, up 3 1/2; Frisco 91 1/2, up 1 1/2; D. L. & W. 29, up 2 1/2; Pere Marquette 68 1/2, up 3; New Haven 34, up 1 1/2; M. H. & T. pfd. "A" 94 1/2, up 1 1/2; Southern Railway 99 1/2, up 3/4; A. T. & T. 139 1/2; Taxes Company 49; Electric Power 36 1/2.

PORTLAND LIVESTOCK MARKET

(U. P. Leased Wire to The Bend Bulletin)
PORTLAND, Aug. 7.—Cattle—Receipts, 135; tone of market, slow; steers, medium, \$7.50@8.25; common, \$6@7.50; canners and cutters, \$1.50@3.25; heifers, medium and common, \$4@4.50; beef cows, medium and common, \$3.25@3.75; canners and cutters, \$1.50@3.25; bulls, canners and bologna, \$3@4.50; calves, medium and choice, 190 lbs. down, \$7.50@9.

Hogs—Receipts, 100; tone of market, steady; medium, good and choice 150 to 200 lbs., \$14.75@15.35; 200 to 250 lbs., \$14@15.35; 250 lbs. up, \$13.50@14.75; packing, smooth heavy, \$10.50@12; slaughter pigs, \$13@14; feeders and stockers, \$13.50@14.50.

Sheep—Receipts, 350; tone of



Horizontal.
1—Part of tree remaining in earth after trunk is cut off.
2—Wise men.
3—To close.
4—To despatch.
5—To close.
6—To close.
7—To close.
8—To close.
9—To close.
10—To close.
11—To close.
12—To close.
13—To close.
14—To close.
15—To close.
16—To close.
17—To close.
18—To close.
19—To close.
20—To close.
21—To close.
22—To close.
23—To close.
24—To close.
25—To close.
26—To close.
27—To close.
28—To close.
29—To close.
30—To close.
31—To close.
32—To close.
33—To close.
34—To close.
35—To close.
36—To close.
37—To close.
38—To close.
39—To close.
40—To close.
41—To close.
42—To close.
43—To close.
44—To close.
45—To close.
46—To close.
47—To close.
48—To close.
49—To close.
50—To close.
51—To close.
52—To close.
Vertical.
1—To cry out.
2—You and I.
3—Encountered.
4—To peel.
5—Observes.
6—Conjunction.
7—Grand (abbr.).
8—Man's waist.
9—Lemonlike fruit (pl.).
10—Fruit stone.
11—European fish of herring family.
12—Portico.
13—Fruit stone.
14—Heavenly body.
15—Machines.
16—Pertaining to Flanders.
17—To furnish with a permanent fund.
18—Ice runner.
19—Fruiting spike of corn.
20—Girl's name.
21—Hastened.
22—Verily.
23—Precipitous.
24—Pointed piece of wire.
25—Island in southern Pacific.
26—Skill.
27—To say.
28—Solemn agreement.
29—God of love.
30—Metal dish.
31—Negative.
32—Early English (abbr.).
33—Southern state (abbr.).
Solution will appear in next issue.

Mannheimers DEPARTMENT STORE SUPER SPECIAL FOR SATURDAY Holeproof Pure Silk Chiffon Hose 69c Pair

Sub-standard of the \$1.25 Grade
In all the new shades including Sunburn, Airedale, Poudre Blue, Indian Tan, Maize, Oriental, Pearl, Gun Metal, Black and White, per pair 69c.

Holeproof Full-Fashioned Chiffon Hose 98c

Substandards of our regular \$1.95 full fashioned pure silk chiffon hose in a special sale. Full range of colors and sizes; 98c pair.

Men's "Exx Toe" Hose 25c

Substandards of the regular 40c grade in Holeproof Hose. A high grade hose with the specially reinforced "Exx Toe." All sizes in a large color selection—while they last, 25c pair.

Come early—while the size and color range is complete

FOREIGN EXCHANGE
NEW YORK, Aug. 7.—Foreign exchange closed lower. Sterling, demand, \$4.85 7-16; francs, .0468 1/2; lire, .0558 1/2; Belgium, .0451 1/2; Holland, \$40.16; marks, \$23.80; Norway, \$18.40; Sweden, \$26.81; Montreal, \$1; Russia, 515; Greece, .0157; Shanghai, 77; Yokohama, 4122.

Specials for Saturday and Monday at WETLE'S

Wool and Wool Mixed Goods
In plaids and plain colors, 1/2 Price
One Lot of Curtainettes and Scrims 1/2 Price
TISSUE GINGHAM
Values up to 50c, special, 25c yard
COSTUME SLIPS
In sateen, flesh and peach colors, \$1.25 grade, 89c
LADIES' NIGHT GOWNS
Crepes and Muslins
\$2.25 grade, \$1.85
\$1.98 grade, \$1.59
\$1.25 grade, 89c
Step-ins and Combination Suits
\$1.25 grade, 89c
BOYS' NIGHT GOWNS
Ages 8 to 12, \$1.15 grade, 75c

FRESH Vegetables
If you need anything in the line of Fresh Fruits and Vegetables, PHONE 81 or 82
Staple, High Class Groceries, PHONE 81 or 82
The Union Grocery Co.
Phones 81 and 82 Bend, Oregon

PEGGY O'ROURKE OFFERING IN STYLISH SUMMER DRESSES
Tub Silk Dresses, good selection in colors and color tones and combinations, \$14.50
Tissue Gingham; the favorite morning and home dress, good color selection, \$3.95
English Prints; the most popular house and street wear dress of the year, \$3.25
THIS WEEK END AND MONDAY
Luxite Silk Hosiery, per pair, \$1.00
The Peggy O'Rourke Shop
Opposite Capitol Theatre
"WHERE STYLES ARE DIFFERENT"