

News Of The Markets

BULLS ACTIVE ON EXCHANGE

Sharp Advances Scored In Specialties

(U. P. Leased Wire to The Bend Bulletin)
NEW YORK, July 28.—Further vigorous bullish demonstrations were staged in today's market. Trading expanded to the heaviest volume since May 21 and the list of stocks in which aggressive buying operations were conducted was the longest of the current bull market. Steel, Baldwin, American Can and other leading industrials were turned over in large blocks at the highest levels of the present forward movement.

Sharp advances occurred in Brown Shoe, Westinghouse Air Brake, American Ice and numerous other issues of the specialty class, while additional gains were scored by Woolworth, White Motors, Fisher Body, General Motors and other recent leaders. Constructive enthusiasm was dampened somewhat, however, by the development of heavy profit taking in the afternoon trading. This movement naturally had more influence on the industrials than on the rails, which displayed noteworthy activity.

Substantial gains were scored in stocks like Frisco common, Norfolk & Southern and the M. K. & T. issues. Buying of the rails was in large measure attributable to the splendid sawing made by most roads in their June earnings statements.

Closing prices included:
U. S. Steel 120, up 1 1/2; American Can 209 1/2, up 2 1/2; Baldwin 114 1/2, off 1/2; Famous Players 112, off 1/2; General Motors 89 1/2, up 1 1/2; North American 59 1/2, up 1/2; Pan American "B" 70 1/2, off 1/2; Mack Truck 186 1/2, ex. rights S. P. 3, Marland 46 1/2, off 1/2; White Motors 93 1/2, up 3/4; Woolworth 169 1/2, up 1/2; Fisher Body 85 1/2, up 1/2; Atchison 120 1/2, up 1/2; New York Central 117 1/2, up 1/2; Frisco 92; Texas Company 51 1/2; A. T. and T. 149 1/2; Electric P. and L. 37 1/2.

WOOL BUYING SLOW

(U. P. Leased Wire to The Bend Bulletin)
BOSTON, July 28.—The wool market is unchanged, much quieter. Activity in domestic and fleece wool is restricted to immediate needs. Some business is reported in pulled wools of "B" quality. Foreign markets are stronger with France buying in Australia. The spring 1926 lines were opened yesterday, showing an average of nearly 5 per cent lower than last year. The department of agriculture estimates the 1925 wool clip for the United States at 249,885,000 pounds, compared with 238,530,000 in 1924.

DAIRY AND POULTRY

PORTLAND, July 28.—Butter—Cube extras 47 1/2c, standards 47c, prime extras 46c, firsts 42c.
Eggs—Extras 37c, firsts 35c, pullets 32c, current receipts 30 1/2c.

LIBERTY BOND PRICES

(U. P. Leased Wire to The Bend Bulletin)
NEW YORK, July 28.—Second 4 1/8s, 101; third 4 1/8s, 101.19; fourth 4 1/8s, 102.9; new 4 1/8s, 106.24.

PORTLAND BANKS

Clearings \$4,828,515.57
Balances \$681,834.26

EVERYTHING ELECTRICAL For Your Car

Schuman Auto Electric

Wheat and Corn Ahead In Deals On Exchange

(U. P. Leased Wire to The Bend Bulletin)
CHICAGO, July 28.—Wheat and corn futures made good gains in local trading here today. Oats held firm. Return of speculative interest to wheat was inspired by bull comment from the northwest and a slackening in winter wheat movements. Shorts began covering on the advance. They appeared disappointed at the market's stubbornness.

Rapidly diminishing stocks and greatly improved cash business strengthened corn prices. Broom-corn comment more than offset bearish influences.

Oats were steady and after numerous small rallies firmness firmed up.

Provisions were steady.

PORTLAND LIVESTOCK MARKET

(U. P. Leased Wire to The Bend Bulletin)
PORTLAND, July 28.—Cattle—Receipts 70; tone of market steady; steers, good grade \$6 to 7.75, medium \$7.75 to 8.25, common \$1.50 to 5.50; heifers, medium and common \$4 to 6.50; beef cows, medium and common \$3.25 to 5.75, canners and cutters \$1.50 to 2.25; bulls, canners and bologna \$3.50 to 4.75; calves, medium and choice, 190 lbs. down \$7.50 to 9.50.

Hogs—Receipts 610; tone of market steady; medium, good and choice 180 to 200 lbs. \$14.75 to 15.25; 200 to 250 lbs. \$14 to 15.25; 250 lbs. up \$15.50 to 14.75; packing, smooth heavy \$16.50 to 12; slaughter plus \$13 to 14; feeders and stockers \$13.50 to 14.50.

Sheep—Receipts none; tone of market steady; lambs \$3 lbs. down, medium and choice \$16.50 to 11.75; heavyweights, medium and choice \$8.50 to 10.50; culls and commons all weights \$6.50 to 8; wethers \$6.00 to 7.50; ewes, common to choice \$3 to 5.

SAN FRANCISCO MARKETS

(U. P. Leased Wire to The Bend Bulletin)
SAN FRANCISCO, July 28.—Potatoes—Rivers, fancy wharf, \$2.25 to 2.60; sweets, 11 1/2 to 12c.
Poultry—Broilers, 1/2 to 1 1/2 lbs., 26 to 28c; colored, 1 1/2 to 1 3/4 lbs., 28 to 30c; fryers, 27 to 32c; aged young roosters, 3 lbs. up, 16 to 18c; old roosters, 15 to 17c; Lethorn old roosters, 12 to 14c; Leghorn hens, 2 1/2 to 3 lbs., 16 to 22c; 3 lbs. up, 23c; large colored hens, 29 to 30c; turkeys, nominal.

Grain—Barley, feed, \$1.45 to 1.60; shipping, \$1.75 to 1.90; wheat, milling, \$2.70 to 2.75; oats, red feed, \$1.55 to 1.65.

Livestock—Cattle, tone of market slower; steers, good, \$7.50 to 8; cows good, \$5 to 5.50. Calves, tone of market, firm; over 200 lbs., \$8.50 to 10. Hogs, tone of market, firm to higher; 150 to 200 lbs., \$15.25 to 15.75; medium, \$14 to 14.50. Sheep and lambs, tone of market, steady; lambs, \$11.50 to 12.50; ewes, \$3.50 to 6; wethers, \$7 to 8.50.

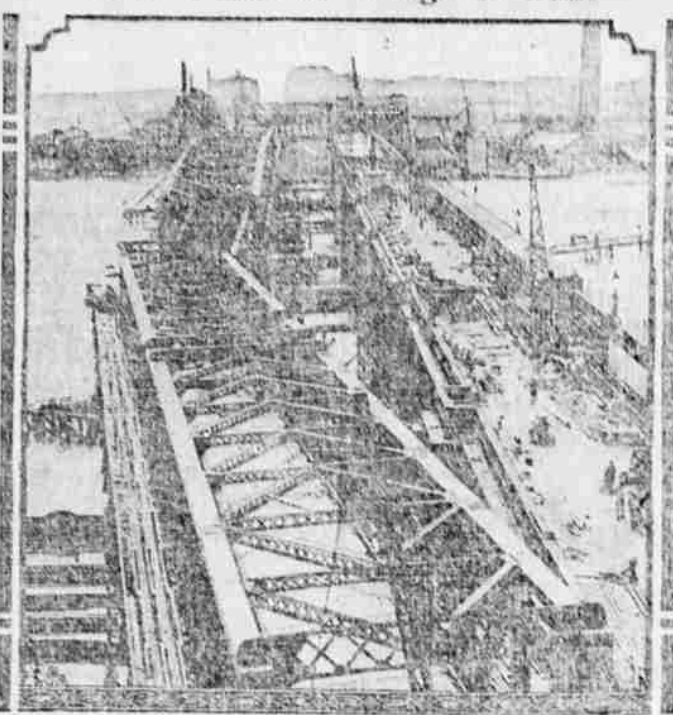
PORTLAND WHEAT PRICES

PORTLAND, July 28.—Western white \$1.44, hard white \$1.45, soft white \$1.44, hard winter \$1.43, northern spring \$1.43, western red \$1.40.

Friendship Day is what we make it. August 2nd is the date. Friendships are worth glorifying. A complete line of friendship cards and mottoes at Symons Bros.

The course of the Mount Bruno Country club of Montreal is said by experts to be the most difficult golf course in Canada. It is a long course with no cross traps, except at the short holes where they guard the green, but it is so designed with side traps and rough that pulling and slicing are severely punished.

New Waterloo Bridge Is Built



The famous Waterloo bridge across the Thames at London is being replaced with a new structure. The photograph shows the central span, weighing 600 tons, being placed in position from the old bridge, on which it was assembled.

Scopes Offers a Tribute To Commoner's Memory

(U. P. Leased Wire to The Bend Bulletin)
DAYTON, Tenn., July 28.—John T. Scopes, the youthful defendant in the recent evolution trial, stood with bowed head today by the bier of his prosecutor, the late William Jennings Bryan.

The young professor gazed for a last time upon the grimy set features of the veteran crusader of fundamentalism. Then with a few words of respect for his late opponent, Scopes turned away.

Dr. John R. Neal, Scopes' chief counsel in the trial, who had been on a vacation with the defendant and Clarence Darrow in the Smoky mountains, was another who stood in line today to pay his last respects to Bryan.

After them came simple mountain folk of the kind the commoner loved and championed.

Wrestling is virtually the only sport in which the Turks have won any distinction.

Sheriff's Badge Stolen, Then He Gets 3 Killers

(U. P. Leased Wire to The Bend Bulletin)
SACRAMENTO, July 28.—Badger-sheriff sheriffs will have to do some fast and furious sleuthing if they wish to share honors with one George W. Carter of Lassen county.

Even though his only visible proof of authority, a neatly engraved gold star, was stolen by a burglar, Sheriff Carter has arrested three murderers in two weeks and is now hot in pursuit of a fourth.

Auto Tax Problem Theme For Club Forum Luncheon

"Oregon's Auto Tax Problem" will be the subject of the address to be delivered tomorrow noon in the Elks' dining room at the weekly forum luncheon of the Bend Commercial club by Joe Dunne, president of the Oregon State Motor association. The musical program of the luncheon will be featured by a vocal solo by Kenneth Weil, according to a program of the luncheon given out today by L. K. Crumb, secretary of the club.

Classified Advertisements

Classified advertising charge per line 25 cents for 25 words or less. One cent per word for all over 25. All classified advertising strictly cash in advance.

FOR SALE

FOR SALE—Five room modern house, close in; plastered, very reasonable. Also 2 vacant lots 50x140, close in. On easy terms. Call Mrs. V. A. Forbes, phone 537 or 506-W. 10-43-45c

FOR SALE—Pick your own strawberries at A. C. Kirsh ranch, 3 miles north of Tualatin. 50c per gallon. 15-43-69c

FOR SALE—4 room house with cellar; lots of built-ins, extra large lot, fine garden, trees and lawn; close in. Part terms. Inquire 405 Florida Ave. 53-43-44p

FOR SALE—A lot, 5 minutes walk from mill, near Kenwood school. Terms or a bargain for cash, or will trade for good light car. Inquire 205 Hawthorne. 10-44-45p

FOR SALE OR TRADE—Late Buick six and Olds. Will take vacant lot, piano or gun on first payment. Good terms on balance. See Myrl Hoover, Fire Station. 21-44-45p

FOR SALE—One room house, partly furnished. Pay \$20 down and \$15.00 a month. See Myrl Hoover, Fire Station. 25-44p

FOR SALE—Bargain on household furniture. Apply 154 E. Revere. Phone 576-J. 15-44-45p

FOR SALE—50 piece layette for baby. Absolutely new. 78 Olney St., near Tourist Camp. 11-43-45p

THE CLEANEST FUEL BOX WOOD QUICK DELIVERY THE MILLER LUMBER CO. Phone 166 1194c

FOR SALE—1921 Ford touring, cheap. Guaranteed to be in good condition; good tires and starter. \$50 down and balance on five easy payments. 137 Irving. 22-44p

USED CARS

FOR SALE—Will put on new paint job to suit customer and guarantee to be in first class condition. Easy terms. Buick-5 touring, \$220. \$75 down, balance easy payments. Buick-6 touring, \$135. \$50 down, balance terms. 1923 Ford sedan, just completely overhauled. \$135 down, balance easy terms.

WILLYS-OVERLAND GARAGE
Repair Shop in Connection
1 block east of First Nat'l Bank
44c Phone 21-J

WANTED

WANTED—By young gentleman, board and room in private home, close in. Call X-13 care of Bulletin. 13-43-48p

WANTED—Clean cotton rags at Bulletin office. 9-43-48c

FOR RENT

FOR RENT—Three room furnished cottage, not modern. No objections to children. Garage, close in. Inquire 29 Greeley, upstairs. 20-44p

FOR RENT—3 room house, furnished, 423 Newport. Also four room house, pantry and garage, 515 Ogden Ave. Inquire Mrs. W. Henderson, 1558 E. 2nd St. 23-44-45p

FOR RENT—Two room furnished house near mills. Inquire Dick's Tailor Shop. 13-44-46c

OUR 676 STORE BUYING POWER SAVES YOU MONEY

J.C. Penney Co. A NATION-WIDE INSTITUTION - DEPARTMENT STORES INC. O'Kane Bldg., Bend, Ore.

WHERE SAVINGS ARE GREATEST THROUGHOUT THE YEAR

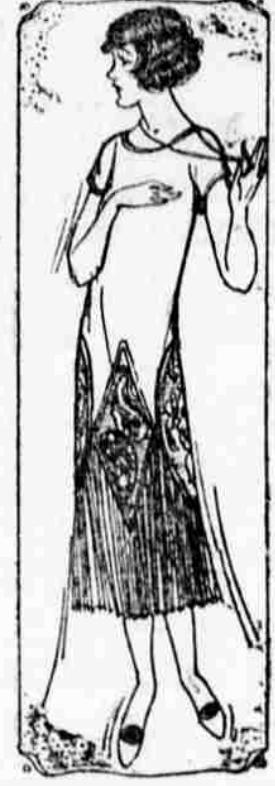
New Fall Dresses Just Received

SILK DRESS SAVINGS!

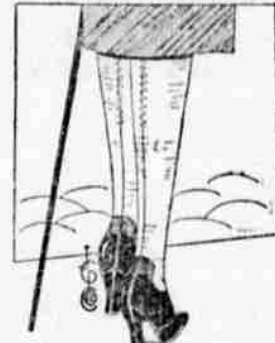
Up-to-the-Minute Styles, Too

The silk dress is the all-around dress! It may be worn summer and winter, for formal and informal occasions. You couldn't make a better investment than one of these silk frocks, priced so very moderately, at

\$9.90 and \$14.75



Full Fashioned Silk Hose Values Every Woman Will Enjoy!



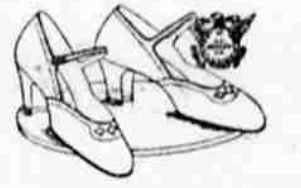
At Last! Silk Hose that satisfy! Make your selection at this Store. For everyday wear, here's this splendid four-ply silk hose—with a fibre thread for wear—full fashioned, in all the modish colors, priced at only,

98c.

Another feature Hose is this ten-ply silk hose, so famous for its faultless appearance and its record of faithful service. Full fashioned, of course. Try these!

\$1.49

Women's Pumps In Patent Leather



A smart model with the small cut-out design so much desired by many women. Developed in patent leather with covered Spanish heel. Low priced and a big value at—

\$4.98

FOR RENT—4 room house at 1421 W. Twelfth St. Inquire at 1421 1/2 W. 12th St. No children preferred. 7-43-44p

FOR RENT—Two and three room furnished housekeeping apartments. Modern, with garage; close in. Phone 418 or call 532 Sigmere. 65-29-65p

MISCELLANEOUS

FULLER BRUSHES—Better and cheaper than ever. Representative, 311 Wall St. 2-27-55p

FOR A permanent cess pool have Perry, the well driller, sink a large hole through the lava rock and into the underlying crevices, making a real drain at small expense. For estimates and service phone 441 or call at 229 Congress St. 11f

FREE—For the hauling, more dirt. Inquire 1047 Bond St. or phone 392-IL. 64-39-45p

MARCELLING—Will now do beauty work in my home, reduced prices. Mrs. A. J. Prevost, 298 Jefferson, cor. Delaware. Phone 579-W for appointment. 88-11-47c

FOR TRADE

FOR EXCHANGE—7 room modern bungalow on paved street, near car line. Portland, for residence property in Bend. 52 East 79th St. North, Portland, Oregon. 17-44-45p

THE BEST BUY OF THE YEAR

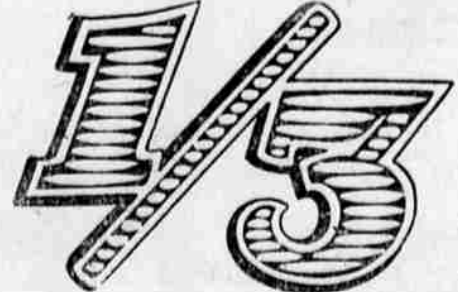
1924 Chevrolet Touring

Balloon tires, valves just ground, new clutch installed. 1st class mechanically. This car is one of our bargains that we offer each day and they don't last long.

SEE IT TODAY

BEND GARAGE CO.
Phone 193

Our Victrolas Are Going Fast--Get Yours Now! REDUCED



This reduction includes our new stock of machines. NOTE THE PRICES!

\$110.00 Upright Victrola, Oak Finish, now \$65.00
\$125.00 Upright Victrola, Mahogany Finish, now \$75.00
\$150.00 Upright Victrola, Mahogany Finish, now \$95.00
\$150.00 Console Victrola, now \$105.00

\$5.00 down will place one of these machines in your home. Nine months to pay the balance.

Horton Drug Co.

THE FIRST NATIONAL BANK of Bend
Bank of Superior Service
MEMBER FEDERAL RESERVE SYSTEM
Capital and Surplus, \$120,000.00

The size of your taxation depends upon the wealth of your community. Increase this wealth and reduce taxation by trading at home.

PARENTS—
Children, or other unauthorized persons, are not allowed on the log booms or logs in the mill pond. We will appreciate your cooperation in preventing accidents.

THE SHEVLIN-HIXON CO.