

**ORDER OF PYTHIANS BACKS BOY RANGERS**

**Third Group Organized As Interest Increases**

The Knights of Pythias lodge Wednesday evening voted to sponsor a group of boy rangers, thus providing for the organization of a third group. Those already in existence are sponsored by the Christian and Episcopal churches.

The lodge appointed a committee to supervise organization of the group, the committee including Cortley Allen, C. V. Shivas, W. C. Birrell, John Nowby and A. J. Morse.

The matter of organizing a group of boy rangers was presented by Louis Bennett, chairman of the general committee which is promoting the boy rangers movement in Bend. Bennett stated that a third group is needed now and that more will have to be started in the near future if the interest among the boys continues to grow as it has in the few weeks since the movement has been under way.

The boy rangers organization includes in its membership boys between the ages of 9 and 12, boys who are too young to join the boy scouts. Its organization and ritual are built about Indian customs and lore.

**Lightning Starts Fire West of Crane Prairie**

Fire thought to have been started by lightning broke out late this afternoon near the top of a little peak on the summit of the Cascades west of Crane prairie and about one and one-half miles south of Carlton lake.

Some trouble on forest service telephone lines promised to hinder fire prevention work to some extent. About 2:30 o'clock this afternoon the relative humidity was down to 21, the lowest point it had reached for several days. This means that the air has 21 one hundredths of the amount of moisture that it will hold. At 100 per cent it rains. The low relative humidity does not necessarily mean that rain is far away, according to H. L. Plumb, forest supervisor.

**Call For Hay Hands Sent By Farmers of Jefferson**

Several calls from farmers north of Madras who want hay hands have been received at the Bend Commercial club office during the last few days. Not all of the applications have been filled, according to word

received from L. K. Cramb, commercial club secretary.

**Brief Illness Claims Crook County Teacher**

(Special to The Bend Bulletin) PRINEVILLE, June 25.—Miss Edna Morse, 45, for the better part of a decade an instructor in the Crook county schools, died here last night after a week's illness. Heart trouble accompanying a nervous breakdown was the cause. Miss Morse had just finished her second year as teacher of the Wilson section in the Powell Butte section.

Funeral services will be held tomorrow from the home of Mrs. Ada Morse, mother of the Crook county teacher, with Rev. W. L. Van Nuy as officiant.

**HEAT MAKES BRIDGE STICK**  
(U. P. Leased Wire to The Bend Bulletin) PORTLAND, June 25.—Expansion of the draw in the Harriman steel bridge across the Willamette river here, due to the extreme heat, caused it to stick when it was raised to let an ocean liner through.

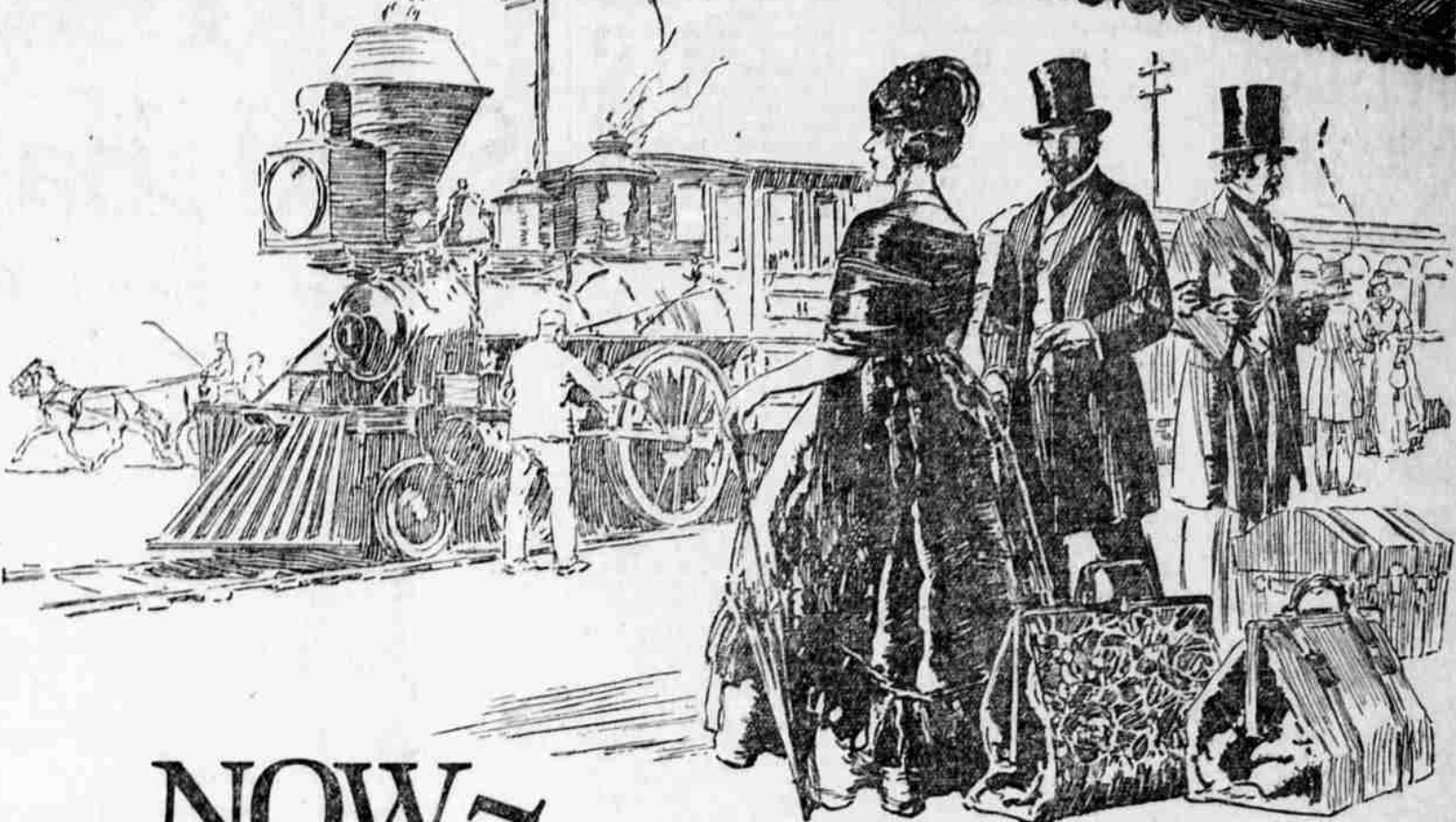
Bridge men sprayed the spoon with hoses for half an hour before it could be lowered.

**KIWANIS PICKS MONTREAL**  
(U. P. Leased Wire to The Bend Bulletin) ST. PAUL, June 25.—Montreal was today chosen as the 1926 convention city by the Kiwanis International delegates at the municipal auditorium here.

**Central Oregon Roads Weekly Report Issued by the State Highway Commission**

- The Dalles-California Highway  
Note: Through traffic advised to take Sherman highway.
- The Dalles-Dufur-White River—Good macadam.
- White River-Maupin—Surfacing under way; look out for trucks.
- Maupin-Cow Canyon—Earth road. Surfacing under way but passable.
- Cow Canyon-Gateway-Madras-Redmond-Bend—Good macadam except six miles dirt road at Trail crossing of Crooked river.
- Bend-La Pine—Seventeen miles cinder surfaced; balance fair earth road.
- La Pine-Six Miles North of Sand Creek—Unimproved dirt road. Rough.
- Six Miles North of Sand Creek-Klamath Falls - Merrill - California State Line—Macadam.
- Klamath Falls-Lakeview Highway—Klamath Falls-Bonanza—Macadam.

**"BACK EAST" on the first Transcontinental**



**NOW~**  
*They want them in 29 States~*

No one can estimate how much the first railroad contributed to the development of the Pacific Coast. But never forget that it brought its rewards to people "back East," too—even in its earliest days. For it transported Eastward many pioneer products of the Pacific—among them Folger's Coffee, Tea, Spices and Extracts.

Away back in 1850 the Western pioneers liked Folger's Coffee. They liked it so well that they told the people back home about it, with the result that Folger's Coffee, Tea and Spices moved to new markets, just as fast as the pioneer carriers could take them. *The demand spread until today the people of 29 states buy Folger-marked packages.*

The modest San Francisco factory which produced the first Folger Products in May, 1850, grew by frequent additions and expansions. A complete plant—one of the most up-to-date in the country—was established at Kansas City, Mo., a branch was opened at Dallas, Texas, and all because high quality has been the Folger cornerstone for seventy-five years.

So in this our Diamond Jubilee year we pay tribute to the pioneers. We honor their memory with this promise: that Folger Quality and Folger Service shall never change from the high ideals set by our founders; that products bearing the Folger name shall always be of the highest quality—just as they have been for these seventy-five years.

J. A. FOLGER & CO.  
San Francisco - Kansas City - Dallas - Shizuoka, Japan



**COFFEE · TEA · SPICES · EXTRACTS**

**WANT TO TRADE FOR GOODYEAR BALLOONS?**

We're willing. We'll take in your old tires as part payment—put on a new set of Goodyear Balloon Tires—

And you're all set—

For more comfort, less repair bills, more mileage.

What do you say?

Phone us now!

**SPECIAL, Tire and Tube . . . . . \$8.50**

**Bend Garage Company**

Open All Night  
Catty cornered from Pilot Butte Inn  
Replacement Parts for All Cars Phone 103

- Bonanza-Drews Valley Section—Unimproved. Rough going in places.
- Drews Valley - Lakeview—Eight miles macadam, balance dirt road in fair condition.
- Bend-Lakeview Highway—Bend-Silver Lake—Road in fair condition.
- Silver Lake-Paisley—Dirt road, in fair condition.
- Paisley-Lakeview—45 miles macadam.
- Central Oregon Highway—Bend-Burns—First 12 miles macadam, balance fair dirt road open to travel.
- Burns-Crane—Macadamized.
- Crane-Vale—Rough but passable.
- Sherman Highway—Biggs-Wasco-Moro-Grass Valley—Kent-Shaniko-Madras-Redmond-Bend—Macadam except six miles dirt road at Trail crossing of Crooked river.

- Ochoco Highway—Redmond-Prineville-Mitchell—Macadamized and in good condition.
- Mitchell-Antone-Dayville—Dirt road. Impassable after rains.
- Crater Lake Highway—Medford-Trail-Prospect-Fort Klamath—Macadam; open to Ann Springs. Closed through Crater Lake national park on account of snow.
- McKenzie Highway—Eugene-Belknap Springs—Macadamized and in good condition.
- Belknap Springs - McKenzie Pass—Sisters—Open to travel, in fair condition.
- Sisters-Cline Falls-Redmond—Macadam.
- McKenzie-Bend Highway—Junction of The Dalles-California Highway-Tumalo-Sisters—Good macadam.

**LEGAL NOTICES**

**NOTICE OF SHERIFF'S SALE**  
By virtue of an execution duly issued by the Clerk of the Circuit Court of the County of Multnomah, State of Oregon, dated the first day of May, 1925, in a certain action in the Circuit Court for said County and State, wherein Martha Winkelman as plaintiff recovered judgment against M. C. Donahue, which said judgment was thereafter assigned to Fearey Brothers, a corporation, said assignment having been filed in the records of Multnomah County, Oregon, on January 17th, 1925, and which said judgment was duly renewed by order of Court made and entered on January 17th, 1925, in the Circuit Court of the State of Oregon for Multnomah County and the same being for the sum of Three Hundred Ninety-nine and no/100 (\$399.00) Dollars, and interest thereon at eight

per cent per annum from April 24th, 1914, and costs and disbursements taxed at Eleven and 80/100 (\$11.80) Dollars, and for the further sum of Fifty (\$50.00) Dollars, with interest thereon at six per cent per annum from January 19th, 1915.

Notice is hereby given that I will on the 11th day of July, 1925, at the front door of the Court House, in Bend, in said County, at 10 o'clock in the forenoon of said day, sell at public auction to the highest bidder, for cash, the following described property, to-wit:

All of the Northeast Quarter of Section Five (5) in Township Twenty-two (22) South, of Range Ten (10) East of Willamette Meridian in Deschutes County, State of Oregon, taken and levied upon as the property of the said M. C. Donahue or as much thereof as may be necessary to satisfy the said judgment of Martha Winkelman (assigned to

Fearey Brothers) against said M. C. Donahue, with interest thereon, together with all costs and disbursements that have or may accrue.

S. E. ROBERTS, Sheriff.  
Dated at Bend, Ore., June 9th, 1925. 5-11-17-43-28c

**NOXAGE**  
THE HEALTH WATER  
At Your Druggist

**BOYLAN & RAMSEY**  
Lawyers  
Phone 611  
Rooms 7-3, Deschutes Investment Co. Bldg.  
Former offices of  
Dr. Benson & Wosner