

The Bend Bulletin DAILY EDITION

Published Every Afternoon Except Sunday, by The Bend Bulletin (Incorporated) Entered as Second Class matter January 2, 1917, at the Post Office at Bend, Oregon, under Act of March 3, 1879.

ROBERT W. SAWYER, Editor-Manager HENRY N. FOWLER, Associate Editor

An Independent Newspaper, standing for the square deal, clean business, clean politics and the best interests of Bend and Central Oregon.

SUBSCRIPTION RATES

By Mail: One Year \$5.00, Six Months \$2.75, Three Months \$1.50. By Carrier: One Year \$5.50, Six Months \$3.25, Three Months \$1.75.

All subscriptions are due and PAYABLE IN ADVANCE. Notices of expiration are mailed subscribers and if renewal is not made within reasonable time the paper will be discontinued.

Please notify us promptly of any change of address, or of failure to receive the paper regularly. Otherwise we will not be responsible for copies missed. Make all checks and orders payable to The Bend Bulletin.

FRIDAY, MAY 29, 1925

Is it not to deal thy bread to the hungry, and that thou bring the poor that are cast out to thy house? when thou seest the naked, that thou cover him; and that thou hide not thyself from thine own flesh?—Isaiah 58:7.

MAZAMAS AND THE COVE Like the proverbial prophet, scenery has little, if any, honor in its own country. For instance, consider the cove country, to be visited this week end for the second time in a year by the Mazamas.

In the opinion of Central Oregon anglers, the cove, junction of Deschutes and Crooked rivers, is a fairly good place to fish. And in the opinion of others, it is a nice place for a picnic. But the Mazamas, Oregon mountaineers, do not visit the cove to cast flies in the water that churms its way toward the Columbia. Neither do they come to the mid state country for a picnic.

Probably it will surprise Central Oregon people to learn that the cove is considered by the Mazamas one of the most attractive and picturesque parts of the state. And the Mazamas range widely, from Crater lake of the Oregon Cascades to the glacier mantled mountains of Washington.

The cove area is considered one of Oregon's major natural attractions for various reasons, geologic, topographic and scenic. And the greatest of these are geologic.

A volume, bound in basalt, containing the history of innumerable centuries—this is the cove country, junction of two rivers that have battled for ages to maintain their rights of ways through the recurring flows of lava. This volume is open to the person who can read the story in stone in the perpendicular walls of columnar basalt and sedimentary strata.

Our congratulations to the Mazamas. May they succeed in attracting our attention to the scenic beauty and to the inspiring story of the cove country which has not yet been recognized as one of Central Oregon's many assets.

Former service men of Bend tomorrow will reverently pay homage to their comrades, the nation's dead. In tribute to the memory of their friends and relatives who rest in the great silent cities, it is only proper that as many local people as possible attend the exercises in the gymnasium auditorium tomorrow morning.

RADIO

Today: KPO, Hale Bros. and Chronicle, San Francisco, 428.3 meters—4:30 p. m., Rudy Seiger's orchestra; 5:30 p. m., markets; 6:05 p. m., Warfield theater; 7 p. m., Palace hotel con-



CORNERED BEEF HASH

I traveled once in foreign lands, to see what might be seen; men welcomed me with cordial hands, with gracious, kindly mien; when I was hungry they would fry fine victuals, cheap for cash, but nowhere would my money buy a plate of cornered beef hash. I met a lot of noble girls who entertained me well, I dined with knights and belted earls in mansion and hotel; and things they knew I might desire they got me in a flash, but nowhere could I buy or hire a plate of cornered beef hash. I mingled with the peasant folk in lonely thorp and grad, and in their cabins filled with smoke, they fed me what they had. And they had fish and barley bread and leeks and succotash; but nowhere, when the feasts were spread, could I find cornered beef hash. "These countries boast their bills of fare," I used to sadly sigh; "that they frame dishes rich and rare no fellow can deny; to doubt their skill in many things would be unwise and brash; they turn out dishes fit for kings, but where's their cornered beef hash? I'm weary of the fish and game they feed me, ounce by ounce, and of the grub whose frightful name I shudder to pronounce; I'm weary of the mystic stew, the ragout and goulash; I'd give them all to find in view a plate of cornered beef hash." I like the culture of those lands wherein I pushed my cart; and I admired the German bands, and eke Italian art; but little visits will suffice, one's pleasure goes to smash if he can't buy, who has the price, a dish of cornered beef hash.

cert; 8 p. m., Gene James Rose Room Bowl orchestra. KIX, Tribune, Oakland, 509 meters—6 p. m., American theater organ concert; 7 p. m., news, weather, markets; 8 p. m., KIX players.

KGO, General Electric, Oakland, 361.2 meters—4 p. m., Hotel St. Francis orchestra; 5:30 p. m., girls' half hour; 6:45 p. m., stocks, markets, weather, baseball and news.

KFI, Earle C. Anthony, Los Angeles, 467 meters—5 p. m., Herald news; 6 p. m., nightly doings; 7 p. m., Examiner program; 8 p. m., organ recital; 9 p. m., Lubitch trio; 10 p. m., George Frenser, baritone.

KHJ, Times, Los Angeles, 465.2 meters—5:30 p. m., children's hour; 7:45 p. m., Judge Ira F. Thompson; 8 p. m., courtesy program; 10 p. m., Art Hickman's orchestra.

KNX, Express, Los Angeles, 337 meters—4 p. m., Veda Kuapp, music appreciation; 6 p. m., poultry talk; 6:30 p. m., courtesy program; 7:30 p. m., courtesy program; 9 p. m., courtesy program; 11 p. m., Abe Lyman's orchestra.

KGW, Oregonian, Portland, 491.5 meters—5 p. m., children's hour; 6 p. m., Civic Music club; 7:15 p. m., markets, weather, news; 9 p. m., concert; 10:30 p. m., Hoot Owls.

KFOA, Rhodes Store, Seattle, 455 meters—8 p. m., Hoffman orchestra; 8:45 p. m., musical program; 9:30 p. m., Times program; 10 p. m., Eddie Harkness and his orchestra.

Tomorrow: KPO, Hale Bros. and Chronicle, San Francisco, 428.3 meters—5:30 p. m., Warfield theater; 6:30 p. m., Johnny Butck's Cabirians; 8 p. m., Art Weidner's orchestra.

KGO, General Electric, Oakland, 361.2 meters—8 p. m., Brunswick-Radiola night; 10 p. m., Henry Halstead's orchestra.

KFI, Earle C. Anthony, Los Angeles, 467 meters—5 p. m., Herald news; 6:30 p. m., Examiner matinee; 6 p. m., nightly doings; 7 p. m., Orange Blossom Syncoators; 7:45 p. m., The Book Shelf, Miss Nancy; 8 p. m., Examiner program; 9 p. m., Margaret Alwater, dramatic soprano; 10 p. m., Packard Radio club; 11 p. m., KFI midnight frolic.

KHJ, Times, Los Angeles, 465.2 meters—6:30 p. m., children's hour; 8 p. m., courtesy program; 10 p. m., Art Hickman's orchestra.

KNX, Express, Los Angeles, 337 meters—6:30 p. m., dinner program; 7:30 p. m., organ recital; 8 p. m., feature program; 9 p. m., courtesy program; 11 p. m., Hollywood Night.

KGW, Oregonian, Portland, 491.5 meters—6 p. m., Rose City Trio; 6 p. m., Portland hotel orchestra; 10

p. m., Multnomah hotel dance music. KFOA, Rhodes Store, Seattle, 455 meters—4 p. m., Times program; 6 p. m., Hoffman orchestra; 6:45 p. m., studio program; 8:30 p. m., Times program; 10 p. m., Eddie Harkness orchestra.

CHURCH ANNOUNCEMENTS

Salvation Army Wall and Franklin Saturday, Memorial service at 8 p. m.; text, "Set Thine House in Order."

Sunday morning holiness meeting, 11 o'clock; subject, "A Clean Heart at Home"; company meeting for children, 2:30 p. m.; Young People's Legion, 6:30 p. m. The evening service will be a farewell meeting for Ensign and Mrs. Briggs, who are leaving Bend.

We extend to you a hearty invitation to attend our last meeting in Bend.

ENSIGN AND MRS. BRIGGS.

First Lutheran Church Lutheran Pentecostal services will be conducted in the local church at 11 a. m. Sunday, at which time a class of nine will be confirmed. The Lord's supper will be celebrated at this service, partaken by the members of the class and others.

Sunday school at 10 a. m. with special emphasis on the events which took place the first day of Pentecost. Everybody invited.

R. BOGSTAD, Pastor.

Trinity Episcopal Church Wall and Idaho Whit Sunday.

Holy communion, 7:30 a. m.; morning prayer and sermon, 11 o'clock; special topic for sermon: special music, "God So Loved the

Crossword puzzle grid with clues for words like BARROW, SPAINS, OLAARON, DWARFF, STWADE, ROWS, etc.

Horizontal: 1-Grain, 2-Immerse in liquid, 3-Limb, 4-To pay back, 5-Preposition, 6-God of love, 7-Small coin (abbr.), 8-Anger, 9-Open, as a keg, 10-To annoy, 11-Brother (abbr.), 12-Kind of bread, 13-Kind of beer, 14-Domestic animal, 15-Part of wind-propelled boat, 16-Small particle, 17-See in the form of flakes, 18-One who ponders, 19-Bad fortune, 20-Man's polite title, 21-Month of Hebrew calendar, 22-Erudite, 23-Perforated pattern for painting, 24-Prohibitionists, 25-Partake of food, 26-A crucifix, 27-Ceremony, 28-Perfume, 29-Provisional conjunction (pl.), 30-Single, 31-Encountered, 32-Upper surface, 33-Near, 34-Greases, 35-The post, 36-Mother, 37-Number one of a sequence, 38-Mistake, 39-Land measure (pl.), 40-Man's title, 41-Greek letter.

Our Homage and Respects to the Living as well as the Departed Heroes of the Wars of America

Closed All Day Saturday

Memorial Day

Bend Furniture Company

Society News

Notice for publication in the social column in the Saturday issue of The Bulletin must be not later than 5:30 o'clock on the afternoon of the day preceding.

Mrs. F. E. Studebaker, who is leaving with her husband and family next week for Aberdeen, was honored at a number of parties this week. On Monday afternoon Mrs. T. J. Barrett entertained with a bridge party at her home. Three tables were played, prizes being won by Mrs. John Dubuis and Mrs. D. H. Peoples, with a guest prize going to Mrs. Studebaker.

On Tuesday Mrs. D. H. Peoples entertained for Mrs. Studebaker, her sister, with six tables of bridge. Prizes were won by Mrs. C. K. Norcott, Mrs. Ashley Forrest and Mrs. J. Edward Larson.

Mrs. D. T. Carmody entertained with a bridge party on Tuesday at her home. Seven tables were played, prizes being won by Mrs. Jay H. Upton, Mrs. H. E. Allen and Mrs. J. H. Haner.

A picnic at the Tumalo fish hatchery was enjoyed Wednesday evening by Misses Gwen Irwin, Carol Boyd, Beulah Cain, Helen Mahoney, Lois Clark and Bessie Smith, and Mrs. Hazel Manion and Mrs. Hortense Garnett.

World (Stainer); anthem by the choir. Evening prayer and address, 7:30 o'clock; Sunday school, 9:15 a. m. Choir practice, Tuesday, 7:30 p. m. Church Women's Service League, Monday, 2:30 p. m.

Beginning with Sunday, June 7, a short service with instruction will be held at the regular Sunday school hour for children.

No evening services will be held after June 14, until further notice. FRANCIS H. BALL, Minister.

The annual dance given by the alumni of the Bend high school to the graduating class, held last Saturday evening at the school gymnasium, was the best attended and most enjoyable since the custom was started. Nearly every member of the 1925 class and about an equal number of alumni attended. In addition to the dancing, several lively games were much enjoyed. The auditorium had been elaborately decorated by the alumni, and the dancing space reduced so that the floor was not too large for the crowd. Punch was served. Music was furnished by Hosmer's orchestra.

The "Wee Wee" club held a farewell dinner and theater party Tuesday evening, taking dinner at the Pilot Butte Inn and attending the Capitol theater. It was the last meeting of the club before the members leave for the summer vacation.

The club had held a "guest night" meeting on the preceding Tuesday. Misses Agnes Lane and Vida Beougher entertained with four tables of bridge. Miss Izora Vanderwaal received the guest prize and Misses Goldie Goodrich and Ruth McCorkie the regular prizes. A dainty luncheon was served.

With Mrs. R. H. Muncy, Mrs. R. W. Nicholson, Mrs. Ed Rice and Mrs. A. D. Lewis as hostesses, the monthly social of the Ladies' Aid society of the Methodist church was held in Epworth hall this week. Included in the program were much appreciated readings by Mrs. P. A. Hanson and Miss Margaret King. Refreshments were served.

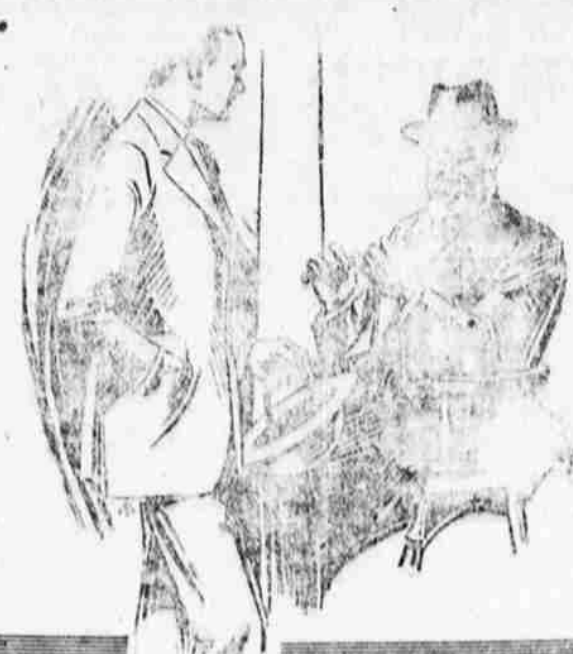
Methodist Episcopal Church Bond, Opposite New High School Church school at 9:45 a. m.; morning worship at 11; subject of sermon, "The Golden Law of the Christian Life." Union meeting of inter-mediate and Epworth leagues to see stereopticon pictures entitled "The United States Meets Mexico." This service will be in Epworth hall at 7 o'clock.

Happy Sunday evening service at 8 o'clock. Come. FRANK JAMES, Pastor.

Crossword puzzle grid with clues for words like 1-Grain, 2-Immerse in liquid, 3-Limb, 4-To pay back, 5-Preposition, 6-God of love, 7-Small coin (abbr.), 8-Anger, 9-Open, as a keg, 10-To annoy, 11-Brother (abbr.), 12-Kind of bread, 13-Kind of beer, 14-Domestic animal, 15-Part of wind-propelled boat, 16-Small particle, 17-See in the form of flakes, 18-One who ponders, 19-Bad fortune, 20-Man's polite title, 21-Month of Hebrew calendar, 22-Erudite, 23-Perforated pattern for painting, 24-Prohibitionists, 25-Partake of food, 26-A crucifix, 27-Ceremony, 28-Perfume, 29-Provisional conjunction (pl.), 30-Single, 31-Encountered, 32-Upper surface, 33-Near, 34-Greases, 35-The post, 36-Mother, 37-Number one of a sequence, 38-Mistake, 39-Land measure (pl.), 40-Man's title, 41-Greek letter.

Vertical clues: 1-Bone, 2-Small pastry, 3-Hopelessness, 4-To halt, 5-Hastened, 6-Belonging to me, 7-Always, 8-Have faith in, 9-Creep, 10-Historical character who sold his birthright, 11-Nincompoop, 12-Goat leather, 13-African antelope, 14-Serious, 15-The sun, 16-Before (poetic), 17-Snake-like fish, 18-To instruct, 19-Bills, 20-Hates, 21-Incline the head, 22-Outer garment, 23-Figure of speech, 24-Preposition, 25-Curved bone, 26-Insect, 27-To stutter, 28-Proceed, 29-Dejects, 30-The sun, 31-Rodent, 32-Cereal, 33-Curved bone, 34-The back, 35-Watering place, 36-Rowing implements, 37-Rubber casing, 38-Kind of pine, 39-Piece of ground, 40-Note of musical scale, 41-Sun god.

Closed All Day Memorial Day - CATO AND CAVIN Tailors



To the Heroes of America

Once each year the citizenship of America pause in their daily going and coming to do homage and pay tribute to the heroes in whose lifeblood is written the deliverance and defense of our great nation.

We take this opportunity to extend our respect and good wishes to the living heroes who are citizens of Bend and vicinity.

THE BEND CAFE

TRINITY CHURCH EPISCOPAL

REV. FRANCIS H. BALL. WHIT SUNDAY. Holy Communion 7:30 A. M., Morning Prayer and Sermon 11:00 A. M., Special Sermon Topic and Music, Evening Prayer and Address 7:30 A. M.

C. W. S. L. Monday, 2:30 P. M., Choir Practice Tuesday, 7:30 P. M.

Beginning with Sunday, June 7th, a short service with instruction will be held at the regular Sunday School hour for children. No evening services after June 14th, until further notice.

MEMORIAL DAY

In honor of the thousands of Americans who have served in the wars of the United States and made the supreme sacrifice, we pause tomorrow to bow in humble tribute. Because of their valor and deeds we enjoy the greatest peace, security and honor of any nation in the world.

This business also desires at this time to extend their best wishes to those among us who offered their lives. We honor them.

The Troy Laundry

THE SCRAP BOOKS. In accordance with the announcement made last December when the second series of historical sketches was begun in this space, we will receive Monday, June 1, scrap books containing the sketches published beginning December 15, 1924, and ending Thursday, May 28, 1925. On Saturday, June 6, the winners of prizes in this contest will be announced. Books will be received at the bank during banking hours Monday—that is, between 10 o'clock A. M. and 3 o'clock P. M. The Central Oregon Bank. Modern Banking Methods Coupled With Old Time Courtesy and Security.