

JARDINE FAILS TO GET PROOF

Sure of Illegal Trading, However

Wide Fluctuations Held Due To Speculations of Professionals In Grain

(U. P. Leased Wire to The Bend Bulletin)

WASHINGTON, May 13.—Investigation by the department of agriculture into alleged manipulations of the wheat market has disclosed evidence of illegal trading activities but so far has failed to uncover proof on which convictions could be obtained, the department announced today.

In a statement issued by Secretary Jardine after a conference with his subordinates on the results of the investigation, which was instituted last March, it was declared "that evidence did exist which would show an attempted or actual manipulation of the market."

But the investigation did not disclose, it was added, "proof necessary for the conviction of those who might be charged with a violation of the grain futures act."

"In any event," the department announcement said, "the results clearly show that the wide fluctuations were

due primarily to the heavy trading of a limited number of professional speculators; likewise that their operations were facilitated to a considerable degree by the large participation on the part of the public after material advances in prices had occurred in the last half of January."

Board Rules Asked

While Secretary Jardine is attempting to utilize the results of this investigation for the purpose of instituting whatever prosecutions may be justified under the law, he is concerned more particularly in the development of some method by which a repetition of the erratic price changes may be obviated.

Conferences were held with officers of the Chicago board of trade, it was explained, at which the organization was urged to adopt rules "that will facilitate the operation and maintenance of federal supervision, prevent the development and dissemination of rumors in the nature of false, misleading and inaccurate reports and statements; prevent actual or attempted manipulation of or cornering of the markets, and discourage any tendency toward extensive over-speculation."

"In brief, it is the secretary's purpose to undertake by the exercise of such authority as is conferred upon him by the grain futures act to bring about a condition where the quotations in futures trading will more accurately reflect the prices incident to supply and demand," the statement continued.

If some had applied themselves to their work they wouldn't now be applying for a job.

Cliffords

THIS IS TINWARE WEEK!

We offer an extensive selection of almost every article for the kitchen, made of tin.

- | | | | |
|---------------------------|-----|-------------------------|-----|
| 8-qt. Kissing Pan..... | 23c | Loose Bottom Cake Tin | |
| 10-qt. Dish Pan..... | 29c | Regular Size..... | 13c |
| 12-qt. Dish Pan..... | 37c | Big Size..... | 15c |
| 14-qt. Dish Pan..... | 43c | Regular Cake Tins. 9c | |
| Individual Pie Tins..... | 5c | Big size Cake Tins. 10c | |
| 8-in. Pie Tins..... | 6c | | |
| 9-in. Pie Tins..... | 6c | | |
| 10-in. Pie Tins..... | 8c | | |
| EASY OUT PIE TINS | | | |
| Regular Size..... | 10c | Gem Pans | |
| Big Size..... | 13c | 6 hole..... | 15c |
| EASY OUT CAKE TINS | | | |
| Regular Size..... | 10c | 8 hole..... | 19c |
| Big Size..... | 13c | 9 hole..... | 25c |
| | | 12 hole..... | 29c |

All Sizes of Dairy and Pudding Pans

All Sizes Funnels..... 6c to 30c

Hundreds of Other Articles

Woman Named Director Of Physical Education

Miss Golda Boone, graduate from the department of physical education at the University of Oregon and supervisor of the Eugene school play grounds last summer, will be in charge of the physical education work in the Bend schools next year, according to information from the office of C. W. Ager.

Miss Boone will report for duty this summer, and will have charge of the playground work during the summer months. The gymnasium tank this summer will be supervised by Miss Boone and Paul Ager, Ager being in charge of the swimming of the boys and men and Miss Boone that of women and girls.

When the school term starts next fall, Miss Boone will be in charge of all physical education work, especially that of girls. John Chute is to supervise the physical education

work in the junior high schools and members of the high school faculty will assist with this work in the grade schools.

Klamath Police Seeking Men Who Cracked Safe

(U. P. Leased Wire to The Bend Bulletin)

KLAMATH FALLS, May 13.—No trace has been found today of the gang of safe crackers who blasted a safe at the Klamath Supply company at Chiloquin last night.

The robbers stole a taxicab from the business section of Klamath Falls and drove to Chiloquin to perform the robbery. They escaped with approximately \$150 leaving \$6,344 in cash behind in the inner drawer of the safe.

It was believed the gang is the same one that cracked several safes recently here and in Medford.

Bend's Police Family Gathers For Wedding

It might have been taken for a raiding party which approached the home of Rev. Frank James at 304 Hunter Place last night. But it wasn't. Night Officer A. E. Coe was the bridegroom elect, Chief of Police P. J. Hanson and Mrs. Ethel V. Johnson, protective division head, were the witnesses, and the bride, Miss Evelyn Stranberg, was the only one in the party who was not a member of the Bend police organization.

Less than an hour after Rev. James officiated at the Stranberg-Coe nuptials, Harry C. Terwilliger and Miss Helen Sumner approached the parsonage, and emerged man and wife. Their witnesses were Mr. and Mrs. Curtis Moody.

Elks Plan Dancing Party To Be Given On Thursday

"From the Cradle to the Poorhouse." Both will be represented at Thursday night's Elks' dancing party at the lodge rooms. Members who appear in any attire except that of childhood or destitution will be fined.

"Come and see the little child lead her tramp friend around the hall to the strains of jazzy music generated by the Spokane symphonians," the

You Cannot Buy GREATER VALUE

The 1925 Star Car with the Million Dollar Motor is the car for you. The car with a hundred and one advanced features. Features which competition may have tomorrow.

High-class, economical features which set the 1925 Star Car in a class by itself.

It is the car for you. Its sturdy perfection will save you money in every mile of its long life.

No car in any price class gives a greater return on your money.

See the 1925 Star Car which is revolutionizing low-cost transportation today. Drive it! You'll understand.

The Car for the Millions with the MILLION DOLLAR MOTOR



The 1925 Star Sport Sedan. The car for the millions with the Million Dollar Motor.



Arrow Motor Co., Inc.

Bond at Minnesota Phone 419

THE GREATEST VALUE BUY IN THE WORLD

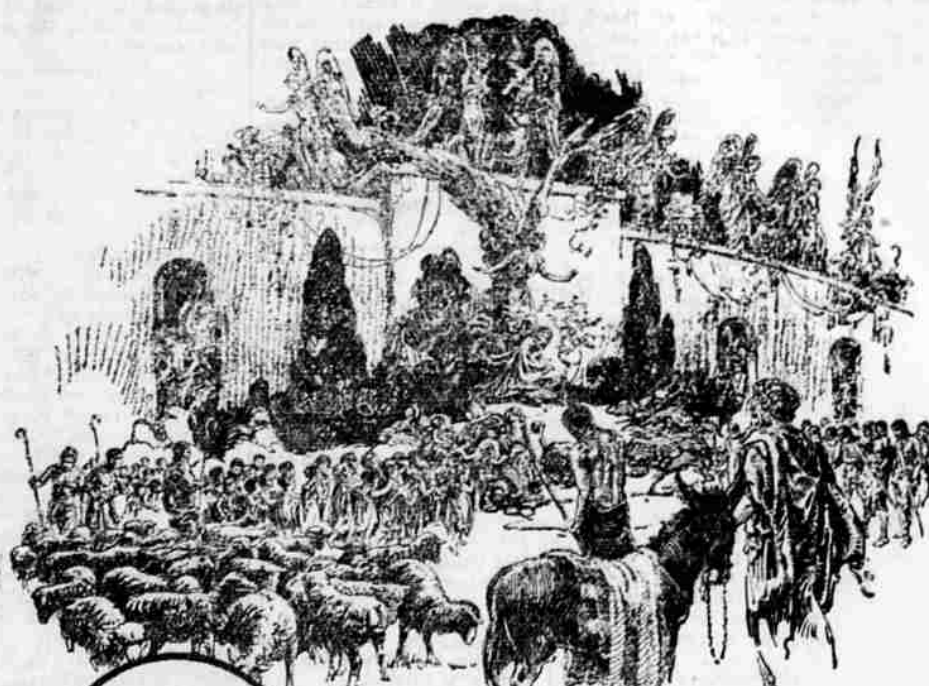
You Save When You Buy—
You Save When You Use—

CALUMET

THE WORLD'S GREATEST
BAKING POWDER

There is No Substitute

SALES 2 1/2 TIMES THOSE OF ANY OTHER BRAND



The Rose of Jericho
[an episode in "Rosaria"]
The flight of Joseph and the Holy Family into Egypt, resting beside a rose bush which becomes the Rose of Jericho, emblematic of the birth of Christianity.

+ + +

TUESDAY, June 16th, is Oregon Night, when every community in Oregon is expected to be represented in the audience.

Plan now to attend Rosaria!

IF THERE is a place in your life for big things — big spectacles, great music, high emotions — you will want to witness Rosaria. It is a magnificent pageant of the rose — the feature of Portland's 1925 Rose Festival. Plan now to attend!

Doris Smith, of Portland, author of the epic-story, has created breathless moments in some of which 5,000 persons appear in episodes of great artistry and soul-stirring human interest.

Charles Wakefield Cadman, one of America's greatest composers, has written the operatic score to be rendered by a magnificent choir of 2,000 trained voices and a grand symphony orchestra.

Montgomery Lynch, noted producer, has trained the cast and chorus perfectly to interpret this wonderful story and beautiful music.

The seating accommodations of Multnomah Stadium are limited. Crowded audiences are expected every night. To avoid disappointment, and insure getting the seats you want, mail your reservations now. Prices: \$2.00; \$1.50; \$1.00; 75c. Remit to 605 Oregon Bldg., Portland.

ROSARIA

PAGEANT FEATURE OF
PORTLAND ROSE FESTIVAL

Multnomah Stadium
June 15-20

A Lifetime Graduation Gift--A Watch

We have prepared for you by obtaining the latest creations in the little white gold wristlet watches the girls like. For the young man there is a variety of trim strap watches or the smart pocket designs in a variety of cases, in either white or green gold.

Come in early—examine the different styles and shapes at your leisure and without feeling that we expect you to buy.

If we can help you present a fine watch to your graduate by making it easy and convenient for you to purchase it, we will gladly arrange it. We carry a complete line of Gruen, Elgin, Waltham and Hamilton Watches.

Larson & Co.
The Store of Many Gifts
Wall at Oregon

is announced. The dancing will begin at 9 o'clock.

Moving Picture Actress Sues Plastic Operator

(U. P. Leased Wire to The Bend Bulletin)

LOS ANGELES, May 13.—Charging her facial expression had been injured rather than improved by a plastic surgery operation, Lucille Woodward, film actress, filed suit today for \$25,000 damages against Dr. W. E. Balseger.

5 ACRE TRACTS

Near Carroll Acres School. Electric light, power and telephone available. Water rights with each tract. Best land near Bend. Especially desirable for poultry or vegetables. Very moderate prices. Easy terms.

For Sale by Owner
E. P. Brosterhaus
Phone 505 W

WATCH

Be careful with fire when in the timber.

A country denuded of timber is never prosperous.

Remember we will need a country to live in after men now grown are gone.

Central Oregon Scouts

This space contributed by Brooks-Seaton Lbr. Co.