

# PEARL HARBOR NOT A REFUGE

## Navy Would Not be Safe From Attack, Found

### Cruising Area Lacking, It Is Pointed Out As Experts Discuss Recent "War"

(U. P. Leased Wire to The Bend Bulletin)  
 HONOLULU, May 5.—Attacked by an enemy power in the far away Pacific, the American navy would not have a safe retreat at Pearl harbor, as was originally intended, according to conclusions drawn today following an inspection trip of the base.

Congress has been asked for a \$5,000,000 appropriation to make possible dredging the channel entrance to a 45-foot depth to enable America's largest capital ships, of peace or war time construction, to put in for shelter.

At present, it was explained, the channel is too shallow to permit the nation's largest ships to cross the bar, the harbor being originally designed for smaller craft.

Landing of the marines at Hahaione and Ewa, which brought the recent maneuvers to a sudden termination, would have been more difficult had there been more cruising area within the harbor, it was pointed out.

A new danger to future activities at Pearl harbor is seen in the increasing number of sampans, swarming about, with fishing privileges extending far into the harbor.

**Talk Too Long**  
 Years ago the monarchy granted the natives large estates but they were in turn sold to eastern companies which leased the fishing to aliens.

Officers of the "black" or defending forces were today to begin making claims in rebuttal to "blue" protestations of victor in the recent "war." It is the fourth day of the six day critique.

Both the "blues" and "blacks" have overstepped the time limit given them and are expected to be cut short during the three days' conference so the deliberations may end on time.

Observations of coordinating umpire, J. J. Staly and Brigadier General Leroy Eltinge, are understood to have occupied most of yesterday's session. Unification of the islands'...

air forces is an outcome of the maneuvers is said to be a chief topic in the conference, although high commanding officers will not discuss this phase.

# SCHOOL CHILDREN KEEP MUSIC WEEK

## Final Competition Set For Thursday Night

National Music week is under way, observance in Bend being planned to include musical programs in all rooms of the public schools from the first grade through the high school. Parents and friends are invited to attend any or all of the programs, and especially the glee club and orchestra work in the high school, announces Miss Alice Wood, school music supervisor.

The part of the Music week observance which is creating greatest interest, however, is the annual music memory contest, which will reach its culmination when the pupils representing the Kenwood and Central junior high schools will compete against each other in the final program, Thursday evening at 8 o'clock at the school gymnasium.

Fifteen selections will be played or sung by local musicians and musical organizations, and the pupils competing will be required to give the name of the composer, the name of the composer and a remark concerning the composition.

Contestants chosen in the tryouts to represent the Central junior high are Loismae Shepherd, Bernice Fissel, Edwin Winslow, Doris Butler, Neva Coleman, Margaret Gill, Hazel Pries, Eleanor Weatherford, Kathleen Slate, Helen Garner, John Benson, Myrtle Ogle, Dorothy Elliott, Helen Whittington and Virginia Houston. Alternates are Iola Everett, Melvin Munkers, Sylvia Carpenter, Dorothy James, Jewel Smith and Ora Dickerson.

# Ambassador's Speech Is Liked By British

(Continued from page 1.)

that Europe will seek a settlement free from conditions that might lead to war. A full measure of helpfulness will be obtained only when the American people are assured that the time for destructive methods has passed and that the time for peaceful building has begun.

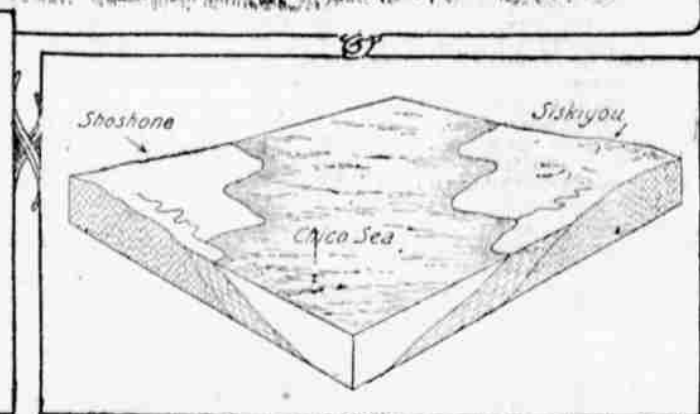
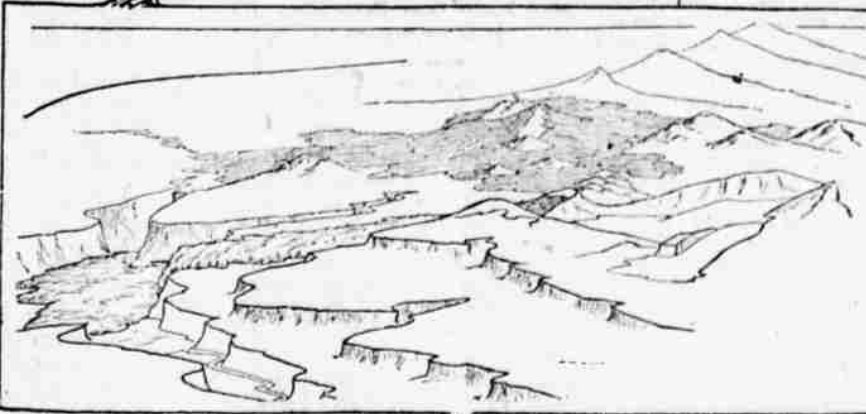
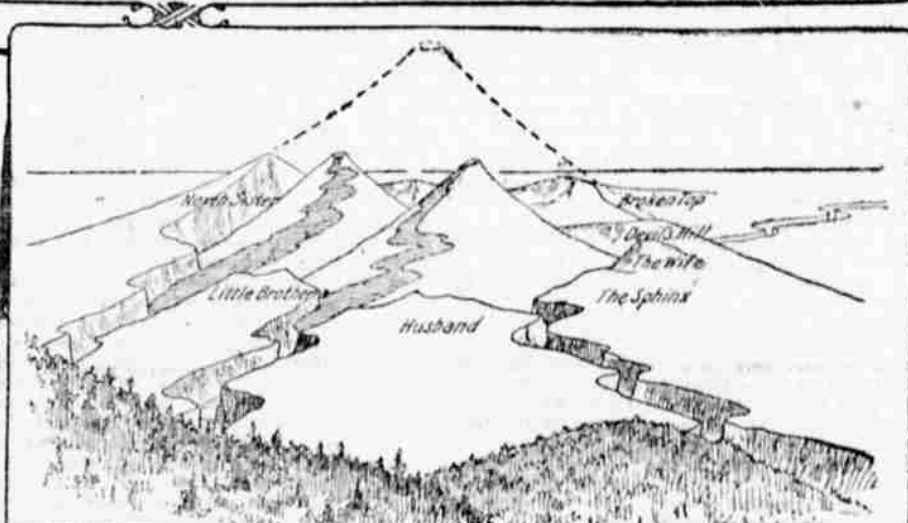
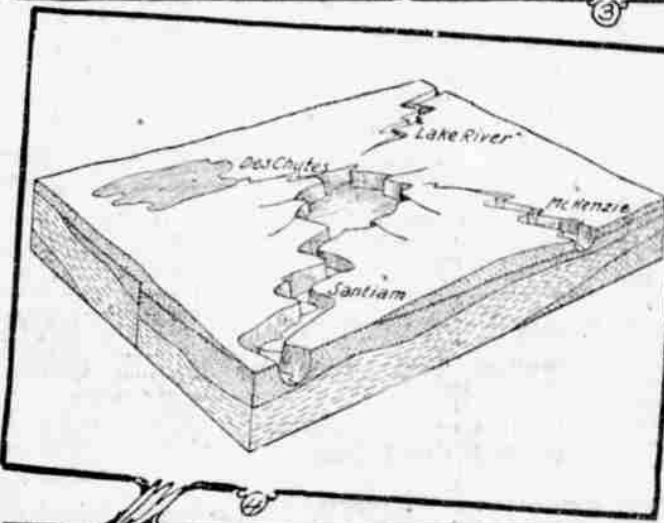
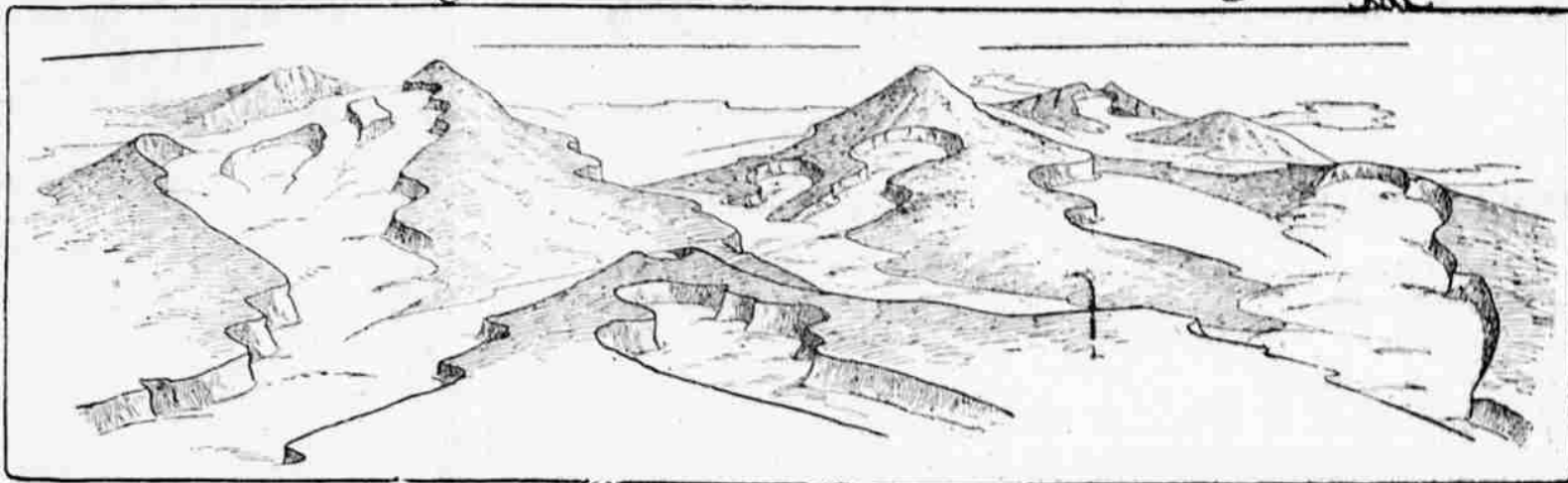
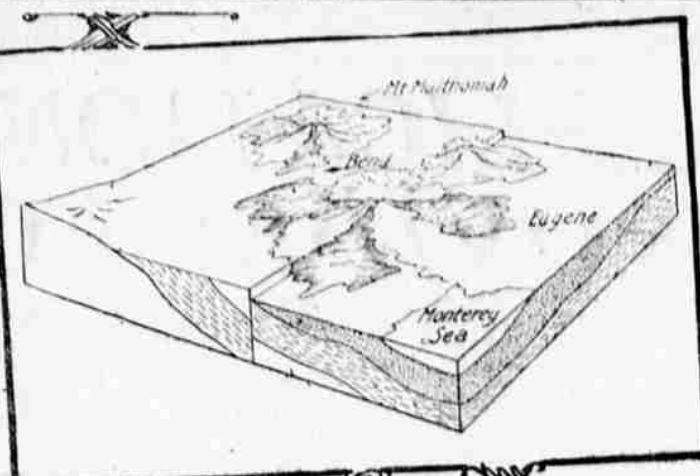
Queen Mary received the ambassador and Mrs. Houghton at Buckingham palace today and congratulated the former on his speech.

**DISAPPOINTMENT FELT**  
 WASHINGTON, May 5.—President Coolidge's disappointment over recent European developments seeming to jeopardize reconstruction and his determination to throw America's weight into the balance of peace, were behind the warning to Europe, voiced by Ambassador Houghton at the London Pilgrims' dinner, according to informed circles here today.

The parting of the ways has been reached, so far as the United States government is concerned. Unless there is new evidence forthcoming that European nations are ready to

# STORY OF GIANT PARENT MOUNTAIN OF THREE SISTERS GROUP IS TRACED THROUGH RECORDS IN STONE BY GEOLOGIST WHO HAS MADE STUDY OF AREA

## Peaks of Mid-State Skyline Are Remnants of a Majestic Cone Which Was Shattered By Some Cataclysm of Nature Equal to That Which Engulfed Or Blasted the Peak of Mount Mazama, It Is Held By University of Oregon Geologist



1—View of the Three Sisters declared to have been formed as the result of the explosion of a giant volcano. 2—Mount Multnomah when about half grown. Later this mountain and others along the fracture built up the Cascade range and covered all of western and much of eastern Oregon with lava. 3—Sketch illustrating the appearance of the Three Sisters region during the ice age. Only a small portion of the glacier which went down the Santiam is shown. The great flow, which reached as far west as Belknap Springs, is seen in the foreground. In the background may be seen the great glaciers, which at this time were the largest in the region, extending eastward toward Bend. 4—Appearance of the enormous caldera soon after the top of the mountain had blown off. In this sketch at least two streams had succeeded in cutting back and breaching the walls of the caldera. 5—Ghost-like outline of Mount Multnomah rising from the remnants of the caldera's rim. The portions of the rim in this sketch are still in existence and may be readily detected by visitors. 6—Breaths of the great lava floods on the north side of the Three Sisters. From and around Belknap may be seen the great McKenzie lava flood. From Cinder Cone, in the foreground, a flow extends north to join the McKenzie lava and one flow pours westward into Lost Creek valley. This latter flow dams and forms a lake at the end of Linton valley. In the foreground may be seen portions of the shrunken Collier and Reutenau glaciers. 7—Conditions in Oregon just before the erection of the Cascade range. At this time only two land masses existed, one in northeastern and one in southwestern Oregon.

# COMING

One of the greatest Western dramas ever screened. And, when we say this we include "The Covered Wagon" without fear of making too broad a statement. You won't want to miss seeing—

# "NORTH OF 36"



# Housecleaning Time is a Good Time to--

Have convenience outlets installed so that you can "plug-in" electric cords more conveniently.

Install a bell ringing transformer, connected to your electric light wires. Rings the door bells without batteries.

Put in lights in the clothes closets. Any electrical contractor will do this for you.



**Bend Water, Light & Power Co.**

"Check" Seal

make sacrifices now in the interest of peace, this government will withdraw its financial aid.

While recognizing the right of such nations to conduct their own affairs, he is unwilling for American money to contribute to another European war.

# High School Graduates To Meet On Wednesday

All former students of the Bend high school are urged to attend a meeting of the alumni association, to be held Wednesday evening in the office of J. A. Eastes on Oregon avenue. Officers will be elected and the question of following out the annual custom of entertaining the "new alumni" on the day after commencement will be taken up. The meeting is called for 8 o'clock.

# Bank President Is Silent On Alleged Embezzlement

(U. P. Leased Wire to The Bend Bulletin)  
 VANCOUVER, Wash., May 5.—O. Jorgen Olson, organizer, and until three weeks ago president of the American Securities bank of Vancouver, today refused to deny irregularities in handling bank funds.

He was arrested yesterday on a warrant charging embezzlement of funds totalling \$7,980, and held for bail of \$10,000.

# Concrete Walk Opened Along North Highway

Residents of the north and north-east parts of Bend were pleased Monday and today by the opening of the new concrete sidewalk which parallels The Dalles-California highway paying from Vermont place to Revore avenue.

# Same Birthday Enjoyed By 3 Babies In Family

The concrete was laid during the last two weeks by the Warren Construction Company, the job being a part of the contract awarded last year, of which the greater part was the highway paving done last fall. The sidewalk part of the work was

delayed until spring in order to avoid laying concrete in cold weather.

The new sidewalk replaces the old unsatisfactory wooden sidewalk for part of the distance, and is the first walk of any kind built along that part of the highway which does not follow the route of the old road.

# Three Children in the Family of Mr. and Mrs. Otis Salisbury, Elgin Avenue, Have a Common Birthday.

Two of them were born today, the other, a girl, just a year ago today. The twins weigh six pounds each, one a boy and one a girl.

Be careful with fire when in the timber.  
 A country denuded of timber is never prosperous.  
 Remember we will need a country to live in after men now grown are gone.  
**Central Oregon Scouts**  
 This space contributed by Brooks-Scantlon Lib. Co.

# The Powder Puff Shoppe

Announcing that the Powder Puff Shoppe is now under the management of

# Mrs. Ora Horton

In addition to the personnel of this Beauty Shoppe we now have a new marceller who also specializes in

# HAIR CUTTING and FACIALS

First Nat'l Bank Bldg.

Phone 484