

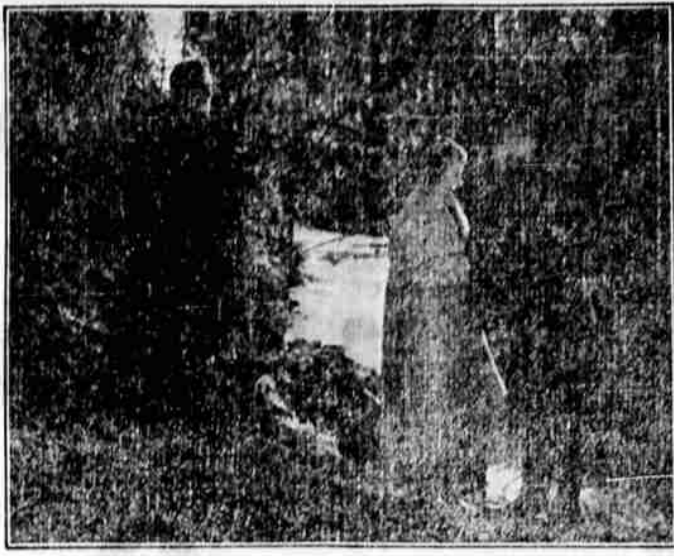
ONLY ONE MAN LEFT TO SERVE ON JURY

Selection of Grand Jury in Newly Formed Texas County Virtually Depletes Ranks of Eligibles.

(By United Press to The Bend Bulletin.) LUBBOCK, Tex., Dec. 3.—Law violators of Hockley county demanding a jury trial are going to have things easy, according to Sheriff Stroud, who has just completed the first grand jury of the newly organized county. Sheriff Stroud traveled 1,200 miles to secure the twelve men. It was found after the grand jury was impaneled that there remained in the county only one other man, qualified to serve as a juror, hence, if indictments should be returned, there could be no petit jury to try persons indicted. The grand jury was discharged without action.

Lubbock county seat of Hockley county, has a total population of five, although it is situated in a rich farming country.

Australian Cannibalism. Cannibalism, apparently, has its refinements. In north Australia there are certain cannibal tribes who make a practice of eating their slain friends, but not their enemies—a habit which ought not to conduce to friendliness.



"Deceiver"—Liberty Monday and Tuesday.

The Swallow Dive. Some boys were being given instruction in diving. The particular lesson was on the swallow dive. "Now, Jenkins," said the instructor to the most backward pupil, "you take a turn." Jenkins made a hopeless attempt and created an alarming splash. "That's not a swallow dive," said the instructor. "Don't it?" gurgled the unfortunate Jenkins. "Why, I thought I had swallowed the whole pool!" Colored Diamonds Rare. Green diamonds are found, and others of crimson, but these are rare. Black diamonds are common enough, but black pearls are rare. Pink pearls are greatly prized. One of the finest in existence was found in a fresh water mussel in the Mississippi river, and is valued at \$15,000. Off the Pearl Islands, south of Panama, pearls are found which are lead gray.

NOTICE OF ELECTION

Notice is hereby given to the legal voters of School District No. 1 of Deschutes County, State of Oregon, that a school election of said district will be held from 2 p. m. to 7 p. m. on Saturday, December 17, 1921, at the high school building in the city of Bend for the purpose of voting upon the school tax for the coming year.

ORIGINAL ESTIMATE AND ACCOUNTING SHEET, SCHOOL DISTRICT No. 1

This original estimate is made in compliance with section 231-A of the school laws of 1921 and shows in parallel columns the unit costs of the several services, material and supplies for the three fiscal years and the budget allowances and expenditures for six months of the current year. ("Six months of the current year" means six months of the last school year.)

Table with multiple columns: ITEM, Estimated Exp. for the ensuing school year, Expenditures in detail 1921, Budget allow. in detail 1921, Detailed Exp. for last year of the 2 yr. period 1920, Expenditures for three fiscal years next preceding the last school year (Second year Give 1919, First year Give 1918), Total.

L. J. C. Rhodes, do hereby certify that the above estimate of expenditures for the year 1921-1922 was prepared by me and that the expenditures and budget allowance for six months of the current year and the expenditures for the three fiscal years next preceding the current year as shown above have been compiled from the records in my charge and are true and correct copies thereof.

J. C. RHODES, District Clerk.

NOTICE OF SCHOOL ELECTION TO INCREASE TAX MORE THAN SIX PER CENT OVER THAT OF THE PREVIOUS YEAR

Notice is hereby given to the legal voters of School District No. 1 of Deschutes County, State of Oregon, that an election will be held in said District at Bend on the 17th day of December, 1921, at 2 o'clock in the afternoon, to vote on the question of increasing the amount of the tax levy in said District for the year 1922 by more than six per cent over the amount of such levy for the year immediately preceding.

It is necessary to raise this additional amount by special levy for the following reasons: The six per cent limitation would fix the levy at only \$39,722.47 which amount would not be sufficient to maintain and operate the schools during the year 1922.

Dated this 26th day of November, 1921.

J. C. RHODES, District Clerk.

L. M. FOSS, Chairman Board of Directors.

NOTICE OF SCHOOL ELECTION

Notice is hereby given to the legal voters of School District No. 1 of Deschutes County, State of Oregon, that a school meeting of said district will be held at High School, on the 17th day of December, 1921, from 2 p. m. until 7 p. m. for the purpose of voting upon the school district tax for the coming year.

Budget

Table showing ESTIMATED EXPENDITURES and ESTIMATED RECEIPTS. Includes categories like Capital, Acquisition and Improvements, Real Estate, Buildings, Equipment, Instruction, Maintenance, Operation, Salaries, and Total.

ESTIMATED RECEIPTS

Table showing estimated receipts from County School Fund, State School Fund, and other sources, totaling \$51,979.85.

RECAPITULATION

Table summarizing Total Estimated Expenses (\$176,916.00) and Total Estimated Receipts (\$51,979.85), with a balance amount to be raised by district tax (\$124,936.15).

Dated this 26th day of November, 1921. Attest: J. C. RHODES, District Clerk. L. M. FOSS, Chairman Board of Directors.

How Ferns Spread.

The fronds of ferns arch over until they touch the earth, where they root and form new plants. Some other ferns occasionally produce plants in this way, but in this species it is a settled habit. The new plants grow up, repeating the process of walking, and soon the original plant is surrounded by quite a colony of its own offspring without the intervention of spores.

Yes!

Isn't it curious how a woman can call a man dear and then make him feel cheap?—Wayside Tales.

Christmas stationery, 40c, \$1.00, \$2.00 and up per box. See our window display and also advertisement on page 3. Buchwalter's. 152c

Santa Remembers Baby



Santa Claus never forgets the babies and each year presents their little belongings made in new and pretty ways. This year "nightingales" and bonnets seem even better than their predecessors. A set to match is shown above, made of fine flannel and trimmed with narrow satin ribbon gathered along one edge and feather-stitched down. A frill of narrow lace finishes the cap.

For Little Garments



Hangers for wee garments make a lovely gift for your children, especially when they look like dolls. Here two are dressed up to represent a girl and a boy doll and a third is simply covered with ribbon and decorated with ribbon flowers. Little celluloid doll heads, wide and narrow satin ribbon and wire hangers with a little ingenious sewing are all that is needed for the doll hangers.

Specials!

- Regular 55c and 65c Boxes of Stationery..... 40c
Correspondence Cards, regular 65c..... 50c
Carter's Writing Fluid..... 10c
Fountain Pens at..... \$1.50, \$1.75, \$2.65
Penholders at ..... 5c and 10c
Victor Desk Ink Wells..... \$1.25
Desk Rolls, complete with rolls..... \$1.50
Tatum Marvel Paper Punch..... \$3.50
Wire Paper Trays (the kind that build up) 75c
Higgin's India Ink, one-half pint..... \$2.00
Carter's Writing Fluid, large size..... \$1.00
Sanford's Premium Writing Fluid, extra large, at ..... \$1.65
Dating Stamps, good to 1926..... 50c
Faber's Rubber Band Assortment..... \$1.00

Our Stationery Line Is Complete

Buchwalter's

WHERE YOUR TRADE IS APPRECIATED

The train situation is only temporary. There is no necessity to buy large supplies of staple groceries. Buy what you need and there will be plenty for everybody.

Shevlin-Hixon Company