

**BEND TRAIN SCHEDULE**

Oregon Trunk  
 Arrives, 7:35 A. M.  
 Leaves, 8:00 P. M.  
 O. W. R. & N.  
 Arrives, 6:50 P. M.  
 Leaves, 7:00 A. M.

**LOCAL NEWS ITEMS**

Port Shuey is back from a short business trip to Redmond.

Mrs. Jack Horton is spending a few days with friends in Prineville.

Mrs. L. L. Cobb returned last night from a visit with relatives at Castle Rock.

Miss Nell Tift will spend the week-end with her brother at Redmond.

G. W. Lancaster, roadmaster of the Oregon Trunk railroad, arrived in Bend last night.

J. H. Meister returned this morning from a business trip to Portland and points in Idaho.

W. B. Duggett, Redmond attorney, is spending the day in Bend attending to legal business.

Miss Eeo Lewis returned to Portland last night after a visit of several days spent with friends in Bend.

Lee A. Thomas has been engaged as architect for the new \$75,000 union high school building at Redmond.

Mrs. M. M. Lally, who has been visiting her sister, Miss Marie Gialine, left last night to return to her home in Portland.

Mrs. W. E. Bechtold of Portland, who has been visiting her parents, Mr. and Mrs. P. J. Young, left for her home last night.

Mrs. S. A. Purdy left this morning for her home at Kennewick, Wash., after a visit of 10 days with her son, the Rev. J. Edgar Purdy.

Mr. and Mrs. W. D. Barnes, Mr. and Mrs. Clyde M. McKay and H. C. Ellis are attending the meeting of the Shrine at Portland today.

The Misses Agnes Campbell and Eunice Catlow were passengers on the night train to Portland, where they will visit friends for a few days.

Marriage licenses were issued today and yesterday afternoon to Oscar M. Franks and Violet Mayne and Charles R. Lowe and Ida V. Roberts.

Passengers on the Bend-Silver Lake stage this morning were: Miss Catherine Manny, to Harper; E. A. Axtell and H. K. Nell, to Silver Lake.

Mrs. J. J. Havlicek left last night for her home in Portland after having spent the past 10 days visiting her daughter, Mrs. A. G. Cholick of La Pine.

**SPRING MODELS ARE PRODUCED**

**NEW YORK MANUFACTURING DISTRICT BUSY CRYSTALLIZING WOMEN'S STYLES WHICH WILL BE FOLLOWED THIS YEAR.**

By "Marjorie."  
 (Written for the United Press.)  
 NEW YORK, Jan. 22.—New York's manufacturing district is working upon spring models full-blown this first month of the new year, and even the retail trade is showing advance lines, while milady purchaser is quite agog at these spring revelations in January. Style trends have not really crystallized as yet, although various lines show some points of similarity which tell what the season's mode will be.

Suits are more varied than anything else, especially in the matter of trimming. Some houses use colored embroideries, others exploit the use of braid in novel designs, while others enliven the costume with gay beaded trimming. Perhaps the latter is most in favor, for each house shows at least some bead-trimmed

Mrs. A. A. Symons and daughter arrived home this morning after spending the past month visiting with Mrs. Symons' parents at Cashmere, Wash.

Mr. and Mrs. E. A. Hermsen were over night visitors in Bend, en route from Lakeview to their home in Baker, leaving this morning on the S. P. & S. train.

Mrs. F. L. Neil and children of Seattle are recent arrivals in Bend, where they will spend the next few days visiting Mrs. Neil's brother, Edward Gentry.

Mrs. R. M. Doty of Cloverdale, Wash., returned to her home this morning after a short visit with her son-in-law and daughter, Mr. and Mrs. E. L. Coble.

L. P. Johnson left last night for Portland to consult a specialist in regard to the injury to his eye, due to a steel splinter entering the eyeball, sustained while at work at camp No. 1 recently.

**NOTICE**  
 Gun repairing of all kinds; strictly first-class work guaranteed, at Buchwalter's sport store. 161c

Grand mask ball at the gym, February 14th. Supper served by ladies of Mooseheart.—Adv. 39-40c

suits. Some models are very gay with motifs of vari-colored beads, while others use jet and iridescent. Many of the cape-back suits have a beaded pattern about the cape edge. Navy blue, as usual, is the season's favored suit color. Tricotine is the reigning material, and it is these standard blue tricotine suits that flaunt colored beads more than any of the others. One model combines henna and peacock blue beads with floss of the same shades. The floss acts as stem or tendrils, and the beads are combined into a floral motif which is used on the long Tuxedo collar, the flare cuffs and the coat plenum.

On the whole, there is a similar cut to all the suits. This is the short-front coat, with the longer or "stouch" back. This effect developed from the winter's vogue for the "huddled" wrap—that is, the wrap clutched up in the front, falling back upon the shoulders, and thus showing a lower back length than front. This fad is transferred to the suit coat rather than the skirt in the spring line. Spring belts which are plain, beaded or embroidered are used.

A few houses are making satin suits in place of the taffeta line of former black. Many sport models of tweed are also upon the market, but jerseys are practically out of the showing.

The winter vogue for plaid, pleated skirts is holding over for the spring season. Contrary to expectation, the color effects are even darker than they have been for winter wear. Tan is the main color in all the plaid effects, and navy and tan, or brown and tan are the leaders. Black and white effects are also very prominent. Both box and killed models are shown, and even plain gathered or shirred lines are upon the market.

Tailored flannel skirts in white trimmed with red or green stitching are a big line for resort wear. White and red, or white and green checked effects are also very good. Colored silk skirts use faille almost exclusively and the Spanish effect, as given by a low, highly-colored sash, is very popular. Sashes of color upon white flannel or crepe de chine skirts are also very prominent.

**Can Elephant Jump?**  
 Although they are generally believed to be able to do so, it is impossible, owing to weight and structure, for an elephant to leap either up or forward. A big elephant takes 6 feet 9 inches at a stride, but a 7-foot trench would be as hopeless a barrier to it as one of 70 feet.

**A Wholesome Fear.**  
 Some highly strung persons, says a medical writer, are even afraid of inanimate objects. This accounts for many nervous people being afraid of venturing too near a plumber.—Punch, London.

**CORRESPONDENT SEES MENACE IN HATRED OF GREAT BRITAIN**

LONDON, Jan. 22.—Sir Phillips Gibbs, the famous war correspondent, has returned from his short visit to the United States with one bitter memory—of the hatred of England that is being sedulously and subtly cultivated in America.

In his new book, "People of Destiny," he tells of his many pleasant recollections of New York and Boston, but says:

"There is a propaganda of hate being spread throughout the country of most poisonous, malicious, and dangerous character, in which England is represented as an arrogant, grasping and brutal country, intensely jealous of Uncle Sam and deliberately hostile. It is the same kind of propaganda which inflamed Germany against England, and England against Germany. It reaches down to the ignorance and passions of the same classes.

"Taunts in American newspapers are answered by gibes in English newspapers. Bitter speeches by senators are cabled to England and hurt. They are answered by stinging satire.

"It the world not old enough to

get rid of all that silly, childish barbarism? Has it learned no lesson at all out of the massacre of its youth on the altar of stupidity? Are civilized peoples to go on flinging mud at each other for sport; uttering provocative cries like dirty little school-boys for the sake of scoring off each other in newspapers or political debates, careless of the horrible dangers which are thereby caused?"

Discussing the means of best preventing this state of affairs, Sir Phillips suggests a sort of journalists' union.

"I do think," he says, "that there might be an international society of journalists, pledged in honor to abstain from all provocative writing about other nations, and to denounce as unprofessional the conduct of any of their fellows who are found guilty of spreading slander and spite calculated to disturb the world's peace."

**PARING KNIFE IS UNSHEATHED**

(Continued from Page 1.)

mlsioner from \$2000 to \$3500 per year, and the clerk of the state land board from \$2500 to \$3000 per year are recommended in the report of the special legislative committee on salaries and state and county officials.

**Salary Raise Advised.**  
 General increases are also recommended for county superintendents of schools. A recommendation was made that the salaries of county judges be increased. Salaries of county clerks in most cases are adequate, the report states. In a few instances county treasurers are underpaid, while on the other hand, sheriffs of two or three counties are found to be overpaid. The report is signed by Senators Bell and Strayer and Representatives Dodd, Wheeler and Haines.

"Our investigations have been made with a view of maintaining efficiency in public offices," the report reads. "We have sought to protect the taxpayer from inefficient service."

A bill, fathered by Senators Strayer, Hume and Jones, provides that county assessors "shall place upon the assessment-roll any personal and real property subject to taxation upon demand in writing of any taxpayer of the state."

**Cost Delays Action.**  
 The house committee on resolutions balked at the cost of proposed memorials, although they were in accord with the plan to designate

Another family has organized a bank in the home. The father is president, the mother cashier, the oldest boy bookkeeper, and one of our little automatic recording safes acts as receiving teller. It's lots of fun. Become a bank president tomorrow with one of our little banks. The First National Bank.

Dr. John McLaughlin and the Rev. Jason Lee as the two men to represent Oregon in the hall of fame at Washington. An appropriation of \$20,000 was asked for the erection of two bronze statues. The bill was sent back to the committee for re-drafting, so that the required sum may be met through private sources.

The first appropriation bill which made its appearance in the senate is sponsored by Senator Ellis and proposes an increase in the annual appropriation for the maintenance of the state experimental station in Harney county from \$4000 to \$5000.

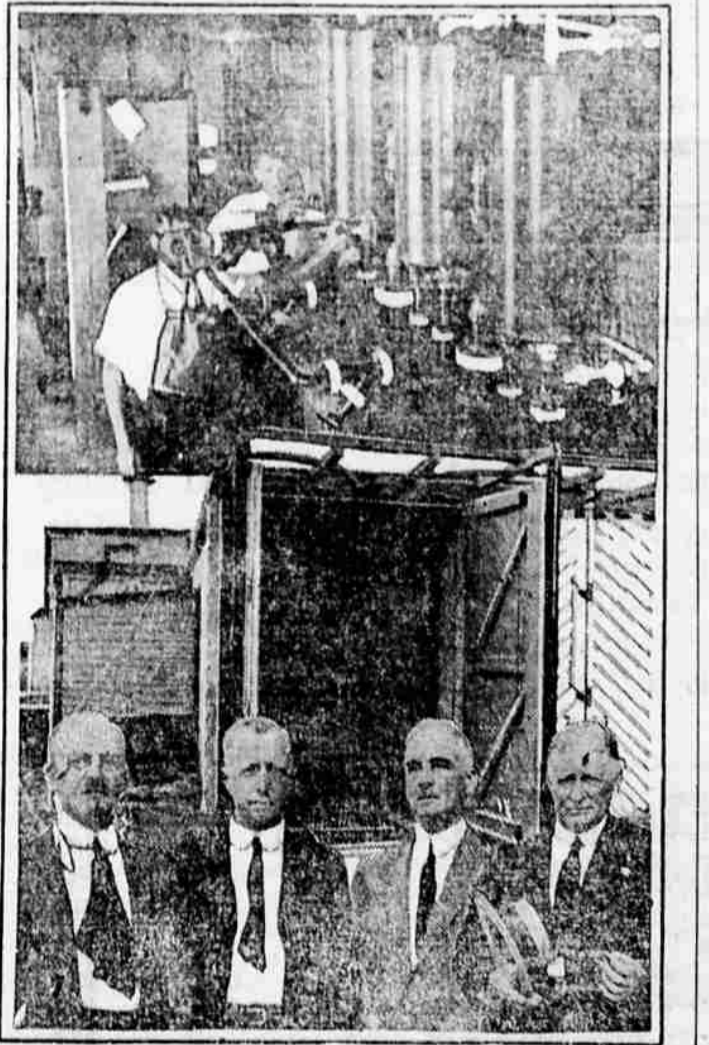
It is proposed to put an additional tax on gasoline to help raise a fund for the upkeep of roads. This has been gathered from the attitude of the joint roads and highway commission.

**Where Sound Travels Far.**

Across ice and particularly in hard frost, sound travels amazingly. Lieut. Foster, on an arctic expedition, found that he could converse with another man quite easily across the mouth of a bay which was a mile and a quarter wide.

Come in and let us explain to you how our little automatic recording home safes work.—The First National Bank.

**Uncle Sam Delouses Trains in Fight Against Crop Cooties**



Uncle Sam's encounter with the cooties during the war was not a new experience. Although it is not generally known—he has been battling various kinds of crop cooties for many years to the extent that the department's work has developed until now great "delousing" machines which fumigate a freight train with ease are in operation. The duty of the Federal Horticultural board is to guard the United States borders and prevent the entrance of injurious plant insects. This board has saved American farmers millions of dollars just now the Mexican border is being watched closely against pink bollworm. The pictures show, upper, the interior of a cyanide plant at Laredo, Tex., where the poisonous gas is turned into a string of freight cars coming into the U. S. Center, exterior of a huge fumigation plant built by the Department of Agriculture. Lower, members of the horticultural board which enforces the crop quarantine laws. Dr. Karl S. Kellerman, Dr. W. D. Hunter, Dr. Charles L. Mur-

In Old Kentucky  
  
 A Wonderful Picture  
**GRAND TONIGHT Last Time**

Paramount Picture  
  
 ADOLPH ZUKOR PRESENTS  
**BILLIE BURKE**  
 (By Arrangement with F. Ziegfeld, Jr.)  
 in **The Frisky Mrs. Johnson**  
 She always played a winning game with the men. But one night she made a mis-cue and—come watch the gossips run up a score!  
**LIBERTY TONIGHT and SUNDAY**

**Dorothy Dalton**  
 IN  
**"A ROMANTIC ADVENTURESS"**  
 Gambling for love and gold in the "devil's playground" at Monte Carlo.

**GRAND SUNDAY ONLY**

**CHEVROLET**  
 "The Product of Experience"

**CHEVROLET**

This famous Chevrolet model is designed, built and equipped to afford dependable, economical transportation. The noted Chevrolet valve-in-head motor develops maximum power with minimum fuel consumption. Chassis and body are proportioned to motor power. The strength, balance and ample spring suspension insure riding and driving ease, operating economy and longer life from tires and every working part of the car.

It is designed throughout for comfort and appearance. Seats are roomy, well cushioned and upholstered in most durable material.

Included in the purchase price, electric starter and lights and every other essential of modern motor car equipment complete the satisfaction this car affords for general passenger use.

Chevrolet Four-Ninety Touring Car

**BEND GARAGE**