

NEW PATENT INCLUDES MUCH DESCHUTES COUNTY ACREAGE

Descriptions of reclaimed Deschutes county lands in the C. O. I. segregation, which are included in the patent recently issued to the state of Oregon, totaling 16,664 acres, have just been received by the Central Oregon Abstract Co., and are as follows:

Willamette meridian, Oregon, township 16 south, range 12 east: NE 1/4 of SE 1/4, S 1/2 of SE 1/4, Sec. 9; S 1/2 of SW 1/4, NE 1/4 of SE 1/4, S 1/2 of SE 1/4, Sec. 10; W 1/2 of NE 1/4, NW 1/4, Sec. 15; NW 1/4 of SW 1/4, S 1/2 of SW 1/4, Sec. 27; S 1/2 of NW 1/4, N 1/2 of SE 1/4, Sec. 28; S 1/2 of NE 1/4, SE 1/4 of Sec. 35.

Township 17 south, range 12 east: The lots 1 and 2, S 1/2 of NE 1/4, N 1/2 of SW 1/4, SW 1/4 of SE 1/4, Sec. 2; SE 1/4 of SW 1/4, Sec. 12; NE 1/4 of NE 1/4 of NW 1/4, S 1/2 of NW 1/4, SE 1/4 of Sec. 13; NW 1/4 of SW 1/4, Sec. 15.

Township 18 south, range 12 east: The SW 1/4 of SE 1/4, Sec. 2.

Township 14 south, range 13 east: The lots 2, 3, and 4, S 1/2 of NE 1/4, NW 1/4 of SW 1/4, S 1/2 of SW 1/4, Sec. 4; S 1/2 of NE 1/4, SW 1/4, N 1/2 of SE 1/4, SW 1/4 of SE 1/4, Sec. 5; lot 5, the SE 1/4 of NW 1/4, SE 1/4, Sec. 6; lot 1 and N 1/2 of NE 1/4, Sec. 7; NE 1/4, N 1/2 of NW 1/4, SE 1/4 of NW 1/4, SE 1/4 of SE 1/4, Sec. 8; N 1/2, NE 1/4 of SW 1/4, S 1/2 of SW 1/4, E 1/2 of SE 1/4, Sec. 9; SE 1/4 of NW 1/4, N 1/2 of SW 1/4, SW 1/4 of SW 1/4, NE 1/4 of SE 1/4, Sec. 10; NW 1/4 of NW 1/4, S 1/2 of SE 1/4, Sec. 13; E 1/2 of NW 1/4, Sec. 15; SE 1/4 of NE 1/4, Sec. 21; E 1/2 of NE 1/4, Sec. 22; NE 1/4 of NW 1/4, S 1/2 of SE 1/4, Sec. 23; SW 1/4 of SE 1/4, Sec. 24; NE 1/4 of N 1/2, SW 1/4 of NE 1/4, Sec. 35.

Township 15 south, range 13 east: The SE 1/4 of the NE 1/4, W 1/2 of SE 1/4, Sec. 3; NW 1/4 of SW 1/4, Sec. 15.

Township 17 south, range 13 east: The NW 1/4 of Sec. 10; W 1/2 of NE 1/4, NW 1/4, SW 1/4, W 1/2 of SE 1/4, Sec. 15; lot 2 and NE 1/4 of SE 1/4, Sec. 18; SE 1/4 of SW 1/4, N 1/2 of SE 1/4, SE 1/4 of SE 1/4, Sec. 20; SW 1/4 of NE 1/4, S W 1/4 of NW 1/4, E 1/2 of SW 1/4, Sec. 21; NW 1/4 of NE 1/4, NE 1/4 of NW 1/4, SW 1/4 of SW 1/4, Sec. 22; W 1/2 of N 1/2, NE 1/4 of NW 1/4, NE 1/4 of SW 1/4, NW 1/4 of SE 1/4, Sec. 23; W 1/2 of NW 1/4, N 1/2 of SW 1/4, SW 1/4 of SE 1/4, Sec. 27; SE 1/4 of NW 1/4, NE 1/4 of S

W 1/4, S 1/2 of SW 1/4, N 1/2 of SE 1/4, S E 1/4 of SE 1/4, Sec. 28; NW 1/4 of NE 1/4, NW 1/4 of NW 1/4, W 1/2 of SW 1/4, Sec. 29; NW 1/4, SE 1/4 of SW 1/4, Sec. 32; E 1/2 of NE 1/4, NW 1/4 of NW 1/4, S W 1/4, Sec. 33; S 1/2 of SW 1/4, SW 1/4 of SE 1/4, Sec. 34.

Township 18 south, range 13 east: The NW 1/4 of NW 1/4, Sec. 8, SW 1/4 of SW 1/4, Sec. 11.

Township 17 south, range 14 east: The SW 1/4 of SW 1/4, Sec. 11; W 1/2 of NW 1/4, W 1/2 of SW 1/4, Sec. 27; E 1/2 of NE 1/4, SE 1/4 of SW 1/4, NE 1/4 of SE 1/4, Sec. 28; NE 1/4 of SW 1/4, S E 1/4 of Sec. 31; NE 1/4 of SE 1/4, S 1/2 of SE 1/4, Sec. 32; NE 1/4 of NE 1/4, N W 1/4 of SW 1/4, E 1/2 of the SE 1/4, Sec. 33.

Township 18 south, range 14 east: Lot 3, NE 1/4 of SW 1/4, S 1/2 of SE 1/4, Sec. 7; S 1/2 of SW 1/4, Sec. 5.

Austria's Salt Monopoly.
The Austrian monopoly on salt ruined all the salt industries for a period of 146 years. There are no data up to the time of the partitioning of Poland, but it can safely be said that the salt mines of Galicia supplied about 100,000 tons of salt yearly. Wieliczka about 24,000 tons and Bochnia 17,000 tons. There were no other salt mines in Poland in the year 1772.—Baltimore American.

Bulletin "WANT ADS" Bring Results—Try Them.

BIG CROWD HEARS THE TEMPLE CHOIR

Concert By the Shevlin-Hixon Band Introduces Excellent Vocal Program At the Gymnasium.

The largest lyceum crowd in the history of Bend attended the opening number of the mill employes' series of five entertainments—the Temple choir—last night, filling the lower floor and overflowing into the balcony. A splendid concert given by the Shevlin-Hixon band, introduced the Ellison-White entertainers.

Clad in surplice and cotta, the members of the choir, five in number, won immediate favor with the crowd in the first part of the program, offering old-time religious songs, some with new arrangements, and closing with "Crossing the Bar" and the "Recessional." The voices of the chorists were of excellent quality and well balanced.

In the second part a greater variety was given, and if the ability of the entertainers had not been demonstrated before, it was clearly shown in the manner in which the sextet from "Lucia" was handled. Solos and clever readings were other features of the program.

Paraffin for Dull Furniture.
When your furniture gets a little dull looking and feels sticky, try pouring a little bit of paraffin on a rag and rubbing dry with a clean duster until every bit of the oil is removed. It will leave a nice polish and be very satisfactory.

CEMETERY MUST OBTAIN MONEY

PLANS FOR BEAUTIFICATION WAIT ON FUNDS WHICH WILL BE PROVIDED IN THE CITY'S NEXT BUDGET.

The recently appointed cemetery association has carefully planned for the beautification of Pilot Butte cemetery, but until money is available, its plans cannot be crystallized into action. This, in brief, was the report of Mrs. A. F. Larson, member of the association, when she appeared before the city council last night. Assurance was given that in the coming city budget, provision would be made for the proper upkeep and maintenance of the cemetery, and an ordinance was introduced more clearly defining the duties and authority of the association.

The council heard and granted a petition for the installation of an arc light at the corner of Twelfth and Newport avenue and adjourned after passing a resolution directing that notices of the coming city election on November 2 be posted.

Bowling Green History.
In 1782 Bowling Green (517 acres) in New York city was ordered fenced in. It was leased at one peppercorn a year for 11 years to three citizens for a private bowling green, the lease being renewed for a second 11 years at 20 shillings per annum.—Automobile Blue Book.

Our Plank.
We may be wrong, but our position is that, for \$9, the garage mechanic should have done something to our car besides grease the cushions.—Dallas News.

World's Largest Springs.
Probably the Fontaine de Vanhese in southern France is the largest spring in the world, and Malad Springs near the Snake river canyon, Idaho, the largest in the United States.

West Australia's Vast Size.
West Australia, the largest state in the continent, has an area of over 975,000 square miles.

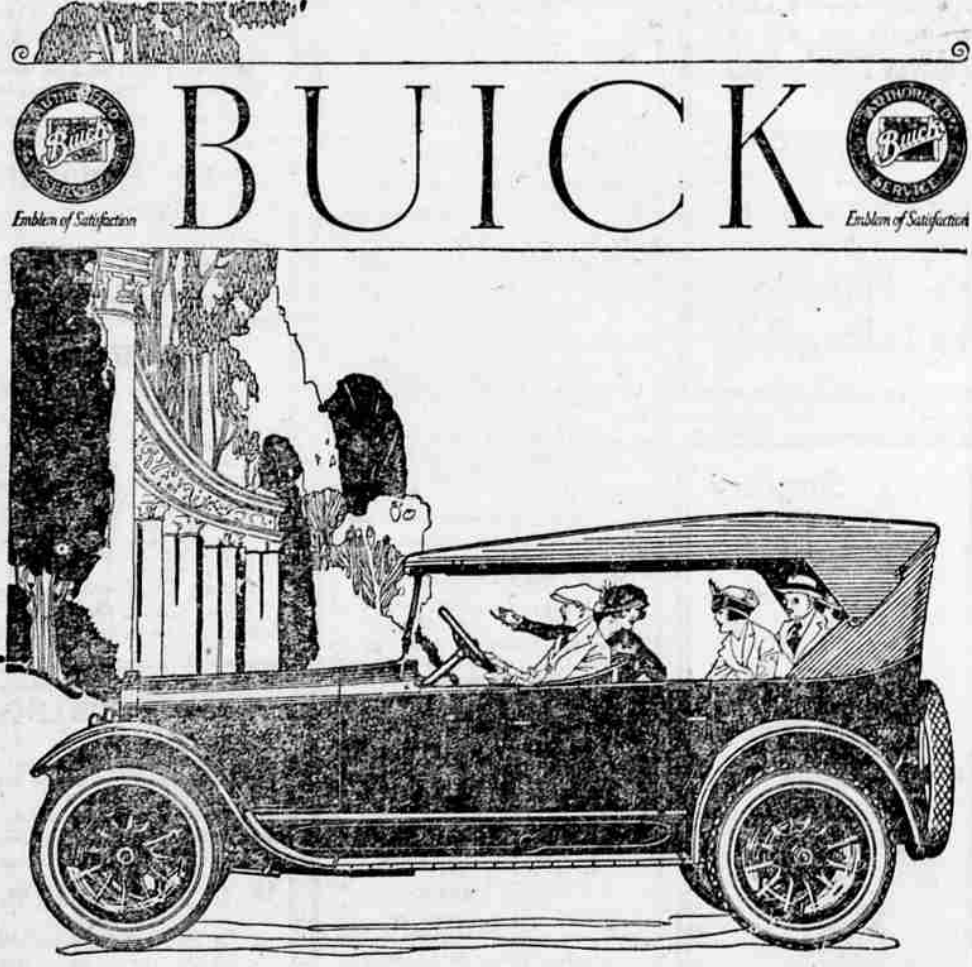
String Holder.
A convenient string holder may be made of a small funnel hung in a corner of a kitchen. A ball of string should be put in the funnel, the loose cord extending down through the stem.

On the Level.
Florida is the flattest state in the Union. Its highest spot is 825 feet above sea level.

1919 BUICK

A 1 shape, always had best of care by careful owner. A real SNAP for quick sale.

Deschutes Garage Company
Nash Cars Federal Tires



STURDILY built—designed for power and dependability, possessing grace and beauty in every line—the new Buick Nineteen Twenty One series signally upholds the traditions that have made the name Buick a notable word in the automotive industry.

Two decades have more than justified the unwavering fidelity to the accepted engineering ideals to which Buick stands committed. The same rugged Valve-in-Head motor refined is a distinguishing feature of every model.

In appearance, the Buick Nineteen Twenty One series is notable for

the harmonious blending of low, graceful body lines; in appointments, for those added refinements that so materially increase the pleasure and comfort of motoring.

In addition to the general features of the new models the Buick Five-Passenger Touring Car (Twenty One Forty Five) possesses a roominess of tonneau and new arrangement of seating that afford occupants the utmost in riding comfort. For the needs of city driving or country driving, this model excels because of its capacity for varied service.

BEND GARAGE

BOND STREET

BEND, OREGON

\$1,750

Buy an Oldsmobile "6"

None Better Made
WHY PAY MORE?

\$1,750 for the "6"
\$2,450 for the "8"

Is the price of the Oldsmobile cars. A price guaranteed against decline until July 1st, 1921. Buy now, have the use of the car, and if a price reduction comes before July 1st, 1921, you will be refunded the exact amount of the reduction. Call—let us demonstrate the car.



The Oldsmobile Thorobred

ALL things considered, the Oldsmobile "Eight" affords supreme motor car value.

A car of ultra-distinguished appearance; built on a chassis that is a masterpiece of advanced engineering; flexible in operation and extremely high powered; exceptionally comfortable and finely appointed; economical—that in brief describes the dependable, roomy 7-passenger Oldsmobile Thorobred.

Other Oldsmobile "8" models are the 4-passenger Pacemaker and the 7-passenger Sedan.

Southworth Bros.
BOND STREET : : : BEND, ORE.

Dealer's Name, Address and Telephone Number