

LOCAL NEWS ITEMS

TODAY'S TEMPERATURE
Maximum, 60 Degrees; minimum, 23 Degrees.

BEND TRAIN SCHEDULE.

Oregon Trunk.
Arrives, 7:35 A. M.
Leaves 8:00 P. M.
O-W. R. & N.
Arrives, 7:40 P. M.
Leaves, 7:00 A. M.

E. D. Miller of Prineville is a Bend visitor today.

Austin Barber is in today from his home in Alfalfa.

Mr. and Mrs. Claud H. Smith are ill at their home on Florida street.

Mrs. F. E. Van Dusen of Prineville spent last night in Bend.

Mr. and Mrs. B. J. Crowley of Silver Lake spent the day in Bend.

W. L. Lowe of Burns arrived in the city last night and is remaining over today.

H. H. DeArmond left last night for Portland and Salem to attend to legal business.

Miss Darle Burton, Miss Janiece Simpson and Robert Innes left this afternoon by auto to spend the week-end with friends at Brothers.

How Do They Know?
The total weight of all persons in the world is estimated at 100,000,000 tons.

Lines to Be Remembered.
Make up your mind to the prospect of sustaining a certain amount of pain and trouble in your passage through life. It will make you thoughtful and resigned without interfering with your cheerfulness.—J. H. Newman.

Early Insurance Company.
Fire insurance originated in its modern form immediately after the great fire of London in 1696. In 1695 the Hand in Hand—probably the oldest fire insurance company in the world and certainly the oldest in Great Britain—was established on the mutual principle.

Beyond Feeling.
Shirley's grandmother had been seriously ill for several days so I inquired of the tiny miss: "How is grandma feeling this morning?" With a solemn expression Shirley answered: "She isn't feelin' this mornin', she's dead."—Exchange.

Don't Choose the Easy Tasks.
It is well for young people to choose the life work which accords with their tastes and qualifications, but never make the mistake of supposing that any work will be altogether pleasant. There is no occupation without some drudgery. There is no success without sacrifice. You will never do anything of consequence without doing something you do not like.—Grit.

Early Hospitals.
Hospitals were founded in very early times in India, Persia and Arabia. They were for the most part supported by the kings. The Greeks maintained shelter houses for the sick, but the best institutions of this kind in ancient times were those of the Romans, which were actually endowed.

MIDNIGHT SET FOR DUBLIN'S CURFEW

Order Made to Allow for Extensive Raids Being Made by Soldiers—Tanks Are Used.

(By United Press to The Bend Bulletin)
DUBLIN, Feb. 21.—Military authorities today issued a proclamation ordering all residents to stay indoors between midnight and 5 o'clock in the morning, unless specifically permitted to be on the streets. The order followed extensive raids by the military Thursday night and early Friday morning on various Sinn Fein volunteer headquarters.

Many houses and business firms were searched and a large number of men arrested. Armored cars and tanks were used by the soldiers.

Virtue Ascribed to Laurel.
According to an old tradition laurel communicates the spirit of poetry and prophecy. Hence the custom of putting laurel leaves under one's pillow to acquire inspiration.

Well, it Made 'Em Happy.
Hara-kiri, or Japanese form of suicide, was a privilege "enjoyed" by noblemen and gentlemen who would not die like common criminals.

TUMALO LODGE OF REBEKAHS FORMED

Thirty-three Members From Bend Attend Institution Ceremonies—Bertha Carey Heads Lodge.

TUMALO, Ore., Feb. 21.—The Tumalo Rebekah Lodge No. 232 was instituted here last night by Mrs. Bertha Morgan of Bend. There were about 50 persons present, of whom 33 represented the Bend lodge.

The officers elected were: Noble grand, Bertha Cain Carey; vice grand, Lydia M. Bartsch; secretary, Mildred Harter; treasurer, Ada E. Ray; inner guard A. J. Gonnason; outer guard, A. J. Harter; officers not designated, Walter Ray, W. E. Sandel and G. W. Sandel.

The candidates were as follows: Mr. and Mrs. O. L. Mitchell, Mr. and Mrs. M. S. Bullard, Miss Bertha Bullard and Miss Cooper.

A banquet supper was served after the initiation ceremonies by the Tumalo lodge.

INCOME BLANKS HERE.
The First National Bank, of Bend announces that it has received the government income tax report forms, which will be distributed to persons making application at the bank.

A Whole Season With a Cool Motor

The Secret is

Monamobile Oil

Not a Asphalt Base—nor a blended oil but a 100% Pure straight RUN PARBAFINE BASE

Use Monamobile
Insist on Monamobile

Watch
Every Saturday Issue
For Oil Advice

Bend Hardware Co.

The farmer and the business man of this community are partners in the progress or the failure of their community.

—If

they pull together, the progress and prosperity is certain to come.

IF they listen to preachers of class hatred there can only be failure as a result.

THE SHEVLIN-HIXON COMPANY



It takes LEATHER to stand WEATHER

To get the best shoes for your money—the kind of shoes that stand weather and wear—you must demand, and be sure you get shoes that are made entirely of good leather. To safeguard your shoe purchases simply ask at our store for

The Friedman-Shelby "ALL-LEATHER" SHOE

They use nothing but good leather in making their shoes, and there is a Friedman-Shelby ALL-LEATHER shoe for any member of the family and for every purpose. Our leading brands are the "Red Goose" school shoe for children, the "Pacific" shoe for women, the "Atlantic" shoe for men, and the "Honesty" work shoe for hard wear.

All of these shoes are branded with the trade-mark shown below and this trade-mark guarantees that you will buy shoes with leather in the hidden parts as well as in the parts exposed to view.

Golden Rule Store
Personal Service



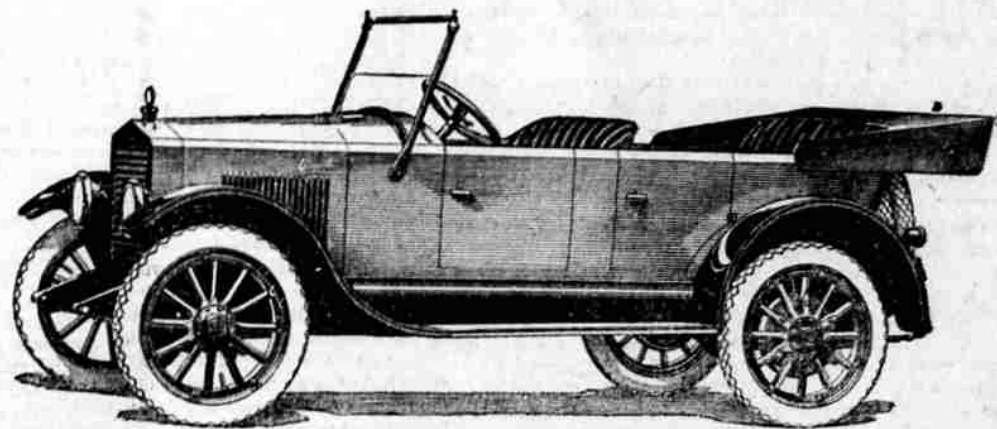
INDUSTRY THRIFT

These Are The Watchwords of Success

In these days of reconstruction try them yourself and watch results.

The Brooks-Scanlon Lumber Co.
BEND, OREGON

Do You Know That Hudson Builds the Essex?



SEE THE ESSEX

It is the Light Weight Car That Holds the Greatest Endurance Proof

Of course you know all about the Essex and its record of 5870 miles at an average speed exceeding a mile a minute. It was the only new car at last year's shows. Now it holds the greatest sales record, for 22,000 buyers paid \$35,000 for Essex in its first ten months.

An Essex stock chassis officially set the world's endurance mark in a 50-hour run totaling 3037 miles. The same stock chassis in three tests covered 5870 miles in 94 hours 22 minutes' driving time.

A dealer's demonstrator that had been driven 12,000 miles, covered 1061 miles in 24 hours over Iowa snow-covered roads while a blizzard was raging. Think what these proofs mean to you. It settles the light car question. It places Essex endurance on the same level with its companion car—the Hudson Super-Six. It elevates the moderate priced car into the fine car quality and performance class. All the advantages in gasoline, oil and tire economy are retained.

Hudson Designed and Builds Essex

What group of men are as well qualified to build performance and endurance in a moderate priced light weight

car? And what other manufacturing organization is equipped to produce it?

Consider how the Super-Six has produced those qualities; then answer if Essex is not the rightful heir to Hudson.

Essex is the "New Day Car"

The long-talked-of light weight, moderate-priced car with satisfactory performance and reliability is found in the Essex.

It fulfills the hope of true automobile economy. Qualities of endurance, fineness, and beauty are combined with the advantages in price and operating costs of light cars. Judge Essex reliability by what you know of the Super-Six—its economy in gasoline, oil and tires by light car standards.

The day when reliability and fine performance were to be had only in large, high-priced cars is past. A visit to the Essex show will convince you. So will a talk with any Essex owner. And don't forget deliveries of Essex cars are becoming more and more uncertain as its fame grows, despite the increasing number being built.

PIONEER GARAGE CO.

Bend, Oregon

