

Ford

THE UNIVERSAL CAR

Owners of Ford cars are advised to beware of "counterfeit parts." If your car needs adjustment bring it here where you will find reliable service with the complete mechanical equipment to give the highest quality of Ford service obtainable. All the Ford parts used are supplied by the Ford Motor Company. You can not expect your Ford car to give the service and endurance you demand unless you have it cared for by men experienced in Ford methods. Runabout \$345, Touring Car \$380, Sedan \$445, Coupelet \$505, Towh Car \$595—all f. o. b. Detroit. On display and for sale by

Cent. Ore Motor Co.

Phone Black 162
Your Patronage Solicited



HUFFSCHMIDT-DUGAN IRON WORKS

Manufacturers of Iron, Bronze and Semi-Steel Castings for Power Transmission Machinery; Wood Pipe Fittings, Grate Bars, Agricultural, Mining and Saw Mill Machinery, Ornamental and Structural Iron. **WE ARE PREPARED TO RUSH YOUR ORDERS ON REPLACEMENTS FOR BROKEN CASTINGS ON ALL KINDS OF FARM MACHINERY.** BEND, OREGON.

USING UP THE HOG

Not Even a Hair of Him Is Wasted by the Big Packers.

GOOD PROFIT IN THE OFFAL

It Yields as Great a Financial Return as Do the Main Food Products of the Carcass—How the Various Parts of the Animal Are Utilized.

There is a use for everything that is removed from a hog. After years of experimenting packers have reduced their business to such a system that they realize as much profit from the offal as they do from the main carcass.

The meat of a hog is from 70 to 80 per cent of the live weight. The 20 to 30 per cent that is classed as offal makes the money for the packers. Exclusive of condemnations by government inspectors, about 17 per cent of each carcass is lost at various stages of dressing and by evaporation in processing and curing, so that really only about 60 per cent actually goes into cuts to be retailed to the consumer. The various cuts—hams, bacon, loins, spareribs and pork sides—are the main products.

Among the edible byproducts is pepsin, which is derived from the stomach of the hog. The liver is used for food

as it is taken from the body, and it is also made into liver sausage. Brains are prepared in many ways. Tongues find their way into the making of canned and pickled meats. Hearts are used in sausage.

Tails, snouts and ears are rich in gelatin or glue, but most of them are sold for boiling with kraut and other vegetables and are much in favor with lovers of boiled meats. Kidneys enter into the fresh meat trade or when the supply is too large are frozen or canned.

Neutral is a specially prepared lard, largely used abroad, and in this country an important ingredient in the manufacture of oleomargarine. Lard proper is not commonly called a byproduct of the hog; it is one of the primary products. About 15 per cent of the average hog goes into the making of lard. The demand for lard has increased greatly during the past few years. It is now used commonly in cooking in place of butter. Part of the lard is further processed into lard oil and stearine, the former used as a lubricant and for illuminating purposes, the latter entering into the manufacture of lard compounds, chewing gum, soft candles, fancy toilet soaps and other toilet preparations.

Small quantities of blood are used in the making of blood puddings, but most of it is dried and ground into blood meal, a popular ration with poultry raisers as well as a feed for calves that are being fed on skim milk.

Stomachs are used as sausage containers, the lining first being removed and used as a source of pepsin. The "black" or curly intestines of the hog

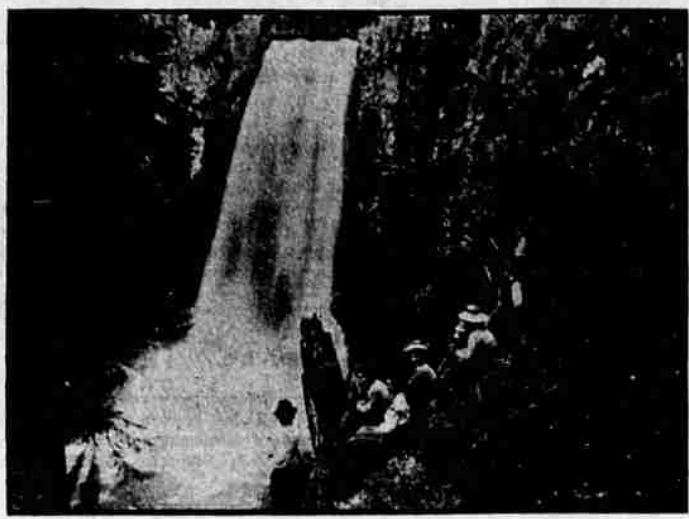
SIGHT SEEING OPPORTUNITIES MANY IN DESCHUTES COUNTY

While the necessities of war have remodeled a former old slogan to "See America First," it is quite possible that many would like to "See Deschutes County" first. With the national forest as a great park, there are numerous trips for those who care to drive, and numberless trips for those who are desirous of exploring the good fold-fashioned way. With a trip a week many months would elapse before the whole list of interesting places would have been visited. Why not see Deschutes County first?

Of the many interesting trips to be made out from Bend, one that affords a variety of scenes and experiences is the trip to Tumalo Falls. These falls, tucked away in the timber away from the road are interesting and their secludedness has

preserved a certain distinct charm that is not encountered on many of the other trips that are usually pointed out as some of the wonders of the country.

The first eleven or twelve miles can be covered by auto, but it is necessary to travel over a trail for a distance of two or three miles. The road that is best leads up through Tin Can Alley to the cabins on the south side of the creek. From the cabins it is about three miles to the falls, which are about 110 feet high. It is quite possible to take the road on the north side of the Tumalo creek and get within two miles of the falls. However it is necessary to go over the mountain for about two miles, which is quite rugged climbing, as there is no trail.



Scene at Tumalo Falls.

are carefully cleaned, processed and made into chitterlings, an inexpensive food that is fried like oysters, much in favor with colored people.

Seven per cent of the weight of the hog is represented in nonedible byproducts in the raw state, which are afterward manufactured into glue, soap, glycerin, blood meal, tannage, curled hair and fertilizer. In the finished state these products represent about 4 1/2 per cent of the hog's weight, the balance being lost in evaporation.

The rinds from skinned hams and bacon, as well as the back skin of the hog, are saved. Pigskin is used in athletic goods.

Hair enters into many lines of manufacture. A large part is used in the making of brushes, and the finer the bristle the higher priced brush is produced. It is also curled and used for upholstery.

The waste waters are evaporated to a thick brown wax known as "stick" because of its adhesive properties. It is used in the manufacture of fertilizer, as it has a high nitrogen content.

Bones are used in making phosphates for baking powder and other compounds. They are also ground into poultry feed, and a large tonnage finds its way into the fertilizer trade. Bones are also burned for charcoal for use in the purification of sirups in the manufacture of sugar. Bone ash is used in making crucibles for glassmaking and metal refining.

Tannage is a bone and tissue substance that is taken from the tanks after the different parts are rendered for grease. It is used chiefly in stock and poultry feed.—Joseph M. Carroll in Country Gentleman.

PHYSICAL CULTURE.

As Good For the Business Man as For the Soldier in Training.

If physical culture is needed for those who bear arms in defense of the country why should it not be applied also to the soldiers of the business and professional world, the men in the commercial trenches? If a certain number of our citizens are compelled to go through a rigid course of physical training, why should not all others be called upon to follow suit?

The soft muscled clerk, the devitalized student, the overworked business man—they need awakening. Now, in many instances they are but little more than human ciphers, 25, 50 or 75 per cent men. With a little properly directed exercise they could be fitted for the ranks of the 100 per centers.

Six hours weekly, two hours for three days each week, would put the average flabby muscled, sedentary worker in fine shape. It would square his shoulders, stiffen his backbone, put some energy and enthusiasm into his makeup. It would make a real man of him.

Every man who is not in training should begin now. If he cannot train

with other men let him follow a system of home training. Hard muscles, strong, stable nerves, high grade endurance—in short, a physique as "hard as nails"—should be the ambition of every sensible man.—Physical Culture.

BRIGHT BOYS AND GIRLS.

The Head and Physical Marks of Intelligence in Children.

In summing up his conclusions on the relationship of intelligence to the size and shape of the head Karl Pearson is quoted in the Journal of Heredity as making these statements about the intelligence of children:

"To sum up, then, while no characters in school children so far dealt with show very high correlation with intelligence, we may yet say that the intelligent boy is markedly conscientious, is moderately robust, athletic and popular; he tends rather to quick than to sullen temper. He is more self-conscious and quieter than the dull boy; he has a slightly bigger head and possibly lighter pigmentation than those of more mediocre intelligence. His hair has a larger percentage of curliness.

"The intelligent girl is also markedly conscientious, moderately robust, athletic and popular. She, too, tends to quick rather than sullen temper. She is less self-conscious than the dull girl and noisier than the girl of mediocre intelligence. It is the slow girl who is quiet and shy. The intelligent girl has a slightly bigger head than the dull girl, and her hair is more likely to be wavy and much less likely to be curly."

St. Sophia's Palimpsest.

Travelers who have visited the great Mohammedan mosque of St. Sophia in Constantinople tell of the visibility of inscriptions made in the interior of the building when it was a Christian church. These had been painted over by the Moslem conquerors, but time defeated their purpose of total effacement, says the Christian Herald. Over the entrance is the inscription in Latin, "I am the door; by me if any man enter in he shall be saved and shall go in and out, and he shall find pasture." The bricks in the great dome in the interior reveal this inscription: "Deus in medio elus; non commovebitur. Adiuva-bit eam Deus vultu suo." The translation may be found in Psalm xlv, 5. These facts are of interest in view of the present tottering condition of the Moslem power.

Real Fighting.

"Well, have you been fixing your fences?"

"Been digging trenches," declared Congressman Fluddub. "I'm in for a real fight."—Kansas City Journal.


If you would have a faithful servant and one that you like servo yourself.—Franklin.

One cent a word is all a little Want Ad will cost you.


One cent a word is all a little Want Ad will cost you.

THE BEST LIGHT SMALL CAR

---The best for you.
---That means one thing to one man and quite another to some one else.
---But if you want a good car, small and light, but strong and sturdy, buy a



and be happy. It is without qualification the best small light car for the average man in the market today. It has all the power you will ever need, more speed than you will dare to use, greater endurance than you expect, and a wider range of usefulness than you imagine now.

Ask for a  demonstration

PRICE
\$645.00 f. o. b. Bend

BEND GARAGE

Diamond Tires Weed Chains Blowout Patches

and all other
Automobile and Tire
Accessories

are to be found at the

Bend Hardware Co.

856 BOND STREET

AUTOMOBILE ELECTRIC REPAIR SHOP

**STORAGE BATTERIES CHARGED
OVERHAULED AND REUILT**

Don't throw away your old battery, as we may be able to renew it at half the cost of a new one.

**GENERATOR, STARTING MOTOR
& MAGNETO WORK A SPECIALTY**

All Work Guaranteed. Shop located in Kenwood. Cross the bridge at Pilot Butte Inn and go four blocks west.

SALTZMAN & COLLINS

C. S. HUDSON, President	E. M. LARA, Cashier
U. C. COE, Vice President	L. G. McREYNOLDS, Asst. Cashier
E. A. SATHER, Vice President	B. A. STOVER, Asst. Cashier

The First National Bank OF BEND, BEND, OREGON.

STATEMENT

June 20, 1917.

RESOURCES	
Bills Receivable	\$432,302.70
Bonds and Warrants	19,374.16
Stock Federal Reserve Bank	1,300.00
Real Estate, Furniture and Fixtures	31,057.34
Bonds to Secure Circulation	12,500.00
5% Redemption Fund	625.00
Other Real Estate Owned	3,577.53
CASH AND EXCHANGE	183,964.75
Bonds to Secure U. S. P. S.	4,034.76
	\$688,736.24
LIABILITIES	
Capital	\$ 25,000.00
Surplus and Profits	26,699.74
Circulation	12,500.00
Deposits	624,536.50
	\$688,736.24

First National Bank
Member Federal Reserve System.

BEST & HARRIS TIRE DOCTORS

ALL WORK GUARANTEED

Across from Pilot Butte Inn

Tires—Michelin—Tubes