

# The Bend Bulletin

DAILY EDITION  
 Published Every Afternoon Except Sunday,  
 BEND, OREGON.  
 Entered as Second Class matter, January  
 2, 1917, at the Post Office at Bend, Oregon,  
 under Act of March 3, 1879.

GEORGE PALMER PUTNAM, Publisher  
 ROBERT W. SAWYER, Editor-Manager  
 FRED A. WOELFLEN, News Editor  
 HENRY N. FOWLER, Associate Editor  
 RALPH SPENCER, Mechanical Supt.

An Independent Newspaper, standing for  
 the square deal, clean business, clean politics  
 and the best interests of Bend and Central  
 Oregon.

**SUBSCRIPTION RATES**  
 By Mail:  
 One Year \$5.00  
 Six Months \$2.75  
 Three Months \$1.50  
 By Carrier:  
 One Year \$6.50  
 Six Months \$3.50  
 One Month \$0.60

All subscriptions are due and PAYABLE IN ADVANCE. Notices of expiration are mailed subscribers and if renewal is not made within reasonable time the paper will be discontinued.  
 Please notify us promptly of any change of address, or of failure to receive the paper regularly. Otherwise we will not be responsible for copies missed.  
 Make all checks and orders payable to The Bend Bulletin.

MONDAY, APRIL 2, 1917

## WOMAN MEMBER OF CONGRESS TAKES HER SEAT TODAY

(By United Press to the Bend Bulletin)  
 WASHINGTON, D. C., April 2.—Representative Jeanette Rankin, of Montana, when she walked into the House today, marked the formal change from the old to the new order of things. She invaded a floor that has been kept sacred to men ever since its inception.  
 Naturally her entrance was regarded with trepidation as well as with interest by congressmen, mostly by the Republican ones, with whom she must fraternize more or less, by reason of her party affiliations.  
 There was some speculation as to whether she would venture into the Republican cloakroom. It was generally decided she must not, unless she hardened herself to the accessories—swear words and mingled grades of tobacco smoke from the 5-cent weed or briar pipe to the perfects and cigarettes.  
 Miss Rankin's entrance, incidentally, was expected to somewhat cleanse the debate in the house, which on occasion, in the case of backwoods orators, has been frank and sometimes indecent.

## 700 THOROUGHBREDS GATHERED AT TRACK FOR EARLY MEETING

(By United Press to the Bend Bulletin)  
 BALTIMORE, Md., April 2.—More than 700 thoroughbreds are on hand to take part in the two weeks' spring racing program which begins today at the Bowie track here, and although 200 new stalls have been built to replace the ones destroyed last fall by fire, there still is an insufficient number. The Southern Maryland Agricultural association, which operates the Bowie track, is placing horses everywhere possible.  
 The meet opening today will continue through two weeks, ending April 14. The Jockey Club's season at Prince George's track, which is about midway between Washington and Baltimore, is opened and closed by the Maryland association.  
 The track at Bowie is an ideal one for early and late racing, although it is not favored as a fast stretch. The track is so built and constructed of such earth that it quickly absorbs the heaviest rainfall. Very few disappointing races are staged.  
 Some of the most prominent horsemen of the country have sent steeds here for the opening events. Thoroughbreds of all ages are quartered. Some of those who will be represented on the track are: August Belmont, chairman of the Jockey club; Richard T. Wilson, president of the Saratoga association; Alfred Vian, of Montreal; Willie Sharpe Kilmer, of New York; Capt. C. K. Rockwell, United States Army; Capt. E. W. Cassatt, United States Army; Richard F. Carman, William Garth, Richard F. Carman, Jr., Harry Payne Whitney, of New York; Edward B. McLean, of Washington; Herbert L. Pratt, William L. Oliver, William Woodward and Oscar Lewisohn, of New York.  
 The winter track performers who have been at Tin Juana, Juarez, New Orleans and Havana have sent many additions to horses which spent the winter in the north. About half those who worked through the cold months will be starters at some time during the meet.

## WEST POINTERS HANDLING COAST DEFENSE GUN

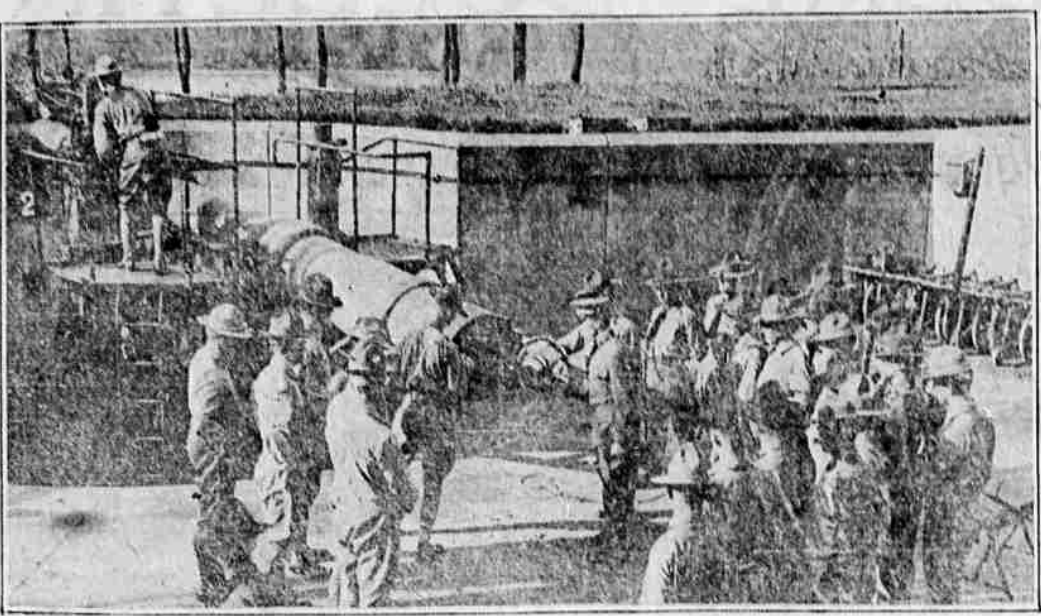


Photo by American Press Association.  
 In anticipation of being called for service before their studies are completed the cadets of West Point are being given very little rest by their instructors these days. Here they are brushing up on their knowledge of coast defense guns.

## BIG TAXPAYERS ARE ENUMERATED

LARGE HOLDINGS RUN AS HIGH AS \$619,195, IS SHOWN IN COMPILATION FOR CENTRAL OREGON COUNTIES.

(The following from a recent number of the Oregon Journal is based on a complete misapprehension of the territory to be served by the Straborn railroads. It is of interest, however, because of the list given of the larger tax payers of the county and of the assessed value of their holdings.—Ed.)

Robert E. Straborn is endeavoring to finance the building of the Oregon, California & Eastern railroad in interior Oregon. The success of his efforts means the construction of 400 miles of railroad in Crook, Klamath, Harney and Lake counties, a broad and potentially productive area, largely undeveloped for lack of transportation.  
 Bend, Burns, Klamath Falls and Lakeview communities are active in support of the enterprise, yet though past experience has shown that railroad transportation adds millions of dollars to the actual value of the lands, but few of the large landholders of Crook, Klamath, Harney and Lake counties are included in the pledged subscriptions to the securities of the O., C. & E.  
 The land owners might reasonably expect an increase in actual value averaging \$3 an acre and if they pledged \$1 an acre the building of the line would be put beyond question.  
 In Crook county the following pay on assessments of \$10,000 or more, the assessment in each instance undoubtedly falling short of the marketable value of the properties:

Name	Assessment
B. F. Allen, Prineville	\$15,790
M. R. Riggs, Prineville	12,105
Black Butte Land and Livestock Co., Sisters	12,275
W. W. Brown, Fife	15,490
H. S. Cram, Prineville	11,090
Gilchrist & Bros., Barnes	10,000
Goddard & Co., Seattle	13,100
Hahn & Friede Investment Co., Portland	16,210
George A. Jones, Bend	10,385
T. H. LaFollette, Prineville	10,135
H. J. Lister, Paulina	17,710
Grant Mays, Portland	10,810
I. M. Mills, Paulina	14,135
Henry McCall, Prineville	14,820
Ralph Porfily, Prineville	14,630
Fred A. Powell, Paulina	13,985
M. D. Powell, Prineville	10,540
Prineville Land & Livestock Co., Portland	11,335
George H. Russell, Prineville	24,860
E. T. Slayton, Prineville	25,565
S. S. Stearns, Prineville	13,965
The Bend Co., Bend	12,110
J. N. Williamson, Prineville	13,713
Warren, Dixon & McDowell, Prineville	17,995
Timber Companies, Crook County	
Walter Alexander, Portland	70,470
Alworth, Washburn Co., Duluth, Minn.	146,715
Brooks-Scanlon Lumber Co., Bend	230,715
Chinook Timber Co., Minneapolis	28,500
W. A. Currie, Minneapolis	14,000
Charles R. Currie, Portland	9,895
Dant & Russell, Portland	18,500
Fremont Land Co., Bend	344,150
R. E. Gilchrist, Alpina, Mich.	30,500
Huron Timber Co., Saginaw Mich.	50,520
John Day Land & Lumber Co., Minneapolis	11,000
Oregon & Western Colonization Co., Prineville	588,600
H. H. Richards, Secherville, Wis.	10,000
Rogers, Youmans Co., Bend	195,250
Russell Dant Co., Portland	23,640
Shevlin-Hixon Co., Bend	619,195
Northwestern Timber Company, Portland	108,250

How far these large owners of Crook county lands have contributed toward the building of the Straborn

## FLYWAY FEATHERS ON HER NEW HAT



THE DASH OF IT.  
 Many of the "in between" hats are put up in silks rather than straw. This is a combination of both, the crown and front piece of diagonal straw being tobacco brown to harmonize with a tail wing of hen pheasant's feathers.

road is not known. Obviously its construction will add greatly to the value of their holdings.

## Are You Ready for Spring?

There may be many things you would like to have adjusted in a plumbing way about your home this spring. We will be pleased to make a careful inspection of your plumbing, and report on it to you. —If you contemplate building, may we not have the privilege of bidding on your work.

**Carlson & Lyons**  
 Wall St., near Franklin  
 Phone, Red 1591

**KENWOOD---BEND VIEW---  
 PINELYN PARK--TERMINAL  
 AND KENWOOD GARDENS**

Easy Monthly Payments on Lots in these Additions.

**J. Ryan & Co.**  
 WE WILL BUILD you a Home on the Monthly Payment Plan. See Us.  
 OREGON STREET

## DRY LAKE FOLK WED

Paul Wilson and Miss Lena Winslow are Principals Here.

Rev. H. C. Hartranft officiated last night at the marriage of Paul Wilson and Miss Lena Winslow, both of Dry Lake, the ceremony taking place in the minister's study in the church. Only a few of the intimate friends of the bride and groom were present.  
 Mr. and Mrs. Wilson will make their home at Dry Lake.

## GERMAN-AMERICANS PRESENT U. S. FLAG

(By United Press to the Bend Bulletin)  
 THE DALLES, Or., April 2.—With American flags flying from practically every house in town, Patriotic Week in The Dalles came to an end Sunday with a patriotic demonstration which has no equal in the history of the city. The day's program was featured by a parade and mass meeting. Max A. Vogt, presented to Mayor Anderson an American flag donated to the city by Americans of German descent.

## RELATION OF WAR TO BIBLE IS OUTLINED

Dr. H. E. Marshall Draws Crowds at Many Meetings at Baptist Church Yesterday.  
 Sunday was a busy day for Evangelist Marshall at the Baptist church. He gave a very effective address to

## BUY AT HOME!

**Deschutes Spray and True Blue FLOURS**

Are real home products manufactured from highest possible grade CENTRAL OREGON wheat, and given the best test of sanitary milling to be found anywhere.  
 Bread from these Flours have an appealing flavor which calls for more.

SOLD AND GUARANTEED ---by all local Grocers.  
**Bend Flour Mill Co.**  
 BEND, OREGON

the Bible school at 10:30 o'clock. At 11, he preached on the experience of love, and at 3:00 he spoke to a crowded house on connected Bible study, and the relation of the prophecy of Daniel and the present world war. He developed the seven periods of scripture, which run from Adam to the future. These periods are approximately 1000 years each, he said, declaring that the world is now in the last of the sixth.  
 Sunday night the house was again filled to listen to Dr. Marshall, seven converts being made.  
 Tonight at 7:45 o'clock he will speak on the subject, "Half Breeds."

## WOMEN OF CANADA TAKE MEN'S PLACE

(By United Press to the Bend Bulletin)  
 MOOSE JAW, Sask., April 2.—The women of London and Paris who are running the surface cars are not alone in their unique calling. A number of street cars here are being operated today by women acting as conductors. They wear gray uniforms, with military caps, skirts to just below the knees, and leggings.

## SELLING SWEETS BANNED

(By United Press to the Bend Bulletin)  
 ROME, April 2.—La Teusa and Aragno's, Rome's largest cafes, were fined today for selling ice cream and ice creams on a "sweetness" day. Approximately \$4000 worth of the "forbidden fruit" was sequestered and distributed among the city's soldier wounded and war orphans.

## SEEK MISSING GIRLS IN SOUTH AMERICA

(By United Press to the Bend Bulletin)  
 RIO DE JANEIRO, April 2.—The fate of Victor E. Innes, lawyer, of Portland, Oregon, and San Antonio, Texas, today depends on the finding of the two girls alive in South America, according to advertisements appearing in papers here. These ad-

vertisements are said to have been authorized by South American consuls acting on advice from the State Department at Washington.  
 Innes is the lawyer who, the girls' mother alleged, went to Atlanta, Ga., and after alienating the affections of Mrs. Dennis for her husband, defrauded her of her fortune and then murdered her and her sister in an attempt to make it appear that they had taken the money and gone to a foreign land.  
 The advertisements state that after the girls' supposed murder they were seen in Jacksonville, Fla., and that they remarked there that they were about to make a trip to South America and the West Indies. The mother reported this rumor to Washington. So far as can be learned the girls have not been seen in any of the South American countries.

SEE OUR NEW LINE OF TRIMMED HATS  
 We will Save You Money  
**STOCKMON'S**  
 5 AND 10c STORE

MOVED!  
 The Offices of the  
**Bend Park Co.**  
 have been moved to the corner of BOND and GREENWOOD AVE.  
 Opposite Wight Hotel.

OVER 60 HOMES IN BEND do all their cooking on  
**Electric Ranges**  
 Over 30 More Homes In Bend do part of their cooking with electricity. We expect to equip 50 Homes with Electric Ranges this spring.  
 We Sell Ranges on Easy Terms  
**Bend Water Light & Power Co.**

Quick Service LIGHT AND HEAVY HAULING CAREFUL DELIVERY  
**TRANSFER**  
 DELIVERIES MADE TO ANY PART OF TOWN **RED 661** BAGGAGE PARCELS EXPRESS Given Close Attention  
**Oregon Fuel & Transfer Co.**  
 Corner Oregon & Wall Sts.

**Bend View**  
 BEND'S MOST SCENIC RESIDENCE PROPERTY  
 Every Lot commands a view of the River, Mountains and City. Building restrictions according to Location.  
 PRICES: \$100 AND UP  
 TERMS: Reasonable  
 We'll loan you money to build. O'Kane Bldg. **J. RYAN & CO.** Phone 361

**SHEVLIN PINE**  
 SOLD BY  
**MILLER LUMBER COMPANY**  
 Phone 1661

**Sash Factory Wood**  
**Bend White Pine Sash Co.**  
 Telephone 441