

Feves exhibit features Chinese brush painting

Solo show opens Feb. 10 with artist reception

East Oregonian

PENDLETON — Nearly 30 ink paintings of landscapes, animals and calligraphy are featured in a solo show at the Betty Feves Memorial Gallery.

“Chinese Brush Painting: A Progression” by Tien-chu Loh opens with an artist reception Thursday, Feb. 10, 4:30-6:30 p.m. The gallery is in Pioneer Hall at Blue Mountain Community College, 2411 N.W. Carden Ave., Pendleton. Masks and social distancing are required. Groups of 20 will be allowed to tour the gallery throughout the reception.

Born and raised in Hong Kong, Loh attended Oregon

State University, receiving degrees in microbiology and pharmacy. He worked as a pharmacist for more than 30 years, including a few years in Pendleton in the early 1980s.

Now retired, he enjoys spending time on his creative endeavors, including photography and Chinese brush painting. Loh participates in exhibitions and demo sessions at local art shows, libraries and the Lan Su Classical Chinese Garden in Portland.

Loh experiments with various Chinese brush techniques. He also works with round brushes, ink, color and Xuan paper, a traditional style of rice paper known for its fine surface.

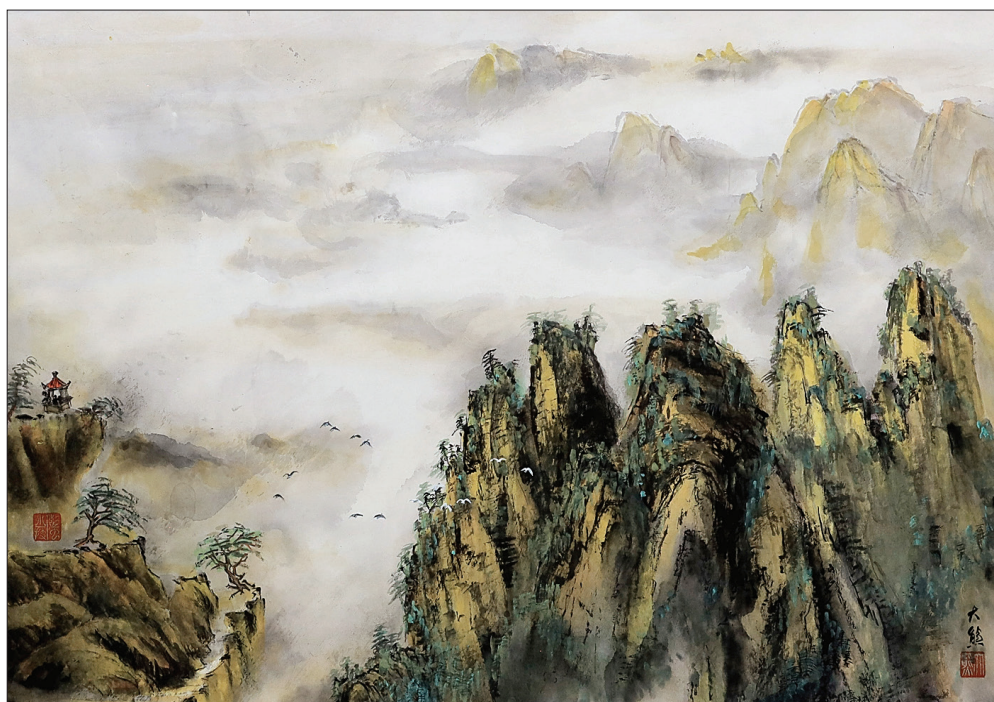
“I prefer the Xieyi (expressive) over the Gongbi (meticulous and formal) style,” he said. “I enjoy working with my hands, thus I construct a

lot of my frames and display my works in a nonconventional fashion.”

His paintings reflect both his heritage as well as his immersion in Western culture. The exhibition includes artwork that exemplify a range of technical skills and Loh’s refined artistic sensibilities.

A nonprofit exhibit space, the Betty Feves Memorial Gallery’s mission is to connect emerging and established artists and their work with BMCC students and staff, as well as the general public. Regular hours are Monday through Thursday, 9:30 a.m. to 1:30 p.m. Admission is free.

For more information, visit www.bluecc.edu/community/feves-art-gallery. For questions, contact Nika Blasser, gallery director, at 541-278-5952 or nblasser@bluecc.edu.



Tien-chu Loh/Contributed Photo

“Chinese Brush Painting: A Progression” by Tien-chu Loh opens with an artist reception Thursday, Feb. 10, 2022, 4:30-6:30 p.m. at the Betty Feves Memorial Gallery at Blue Mountain Community College, Pendleton.

COMMUNITY BRIEFING

Lego event features building contests

HERMISTON — Get ready for some Lego action. The Hermiston Public Library is teaming up with JB Brick Co. for a Lego building competition.

The event features two contests — Build at Home (bring the finished project to enter) and a 100 Brick Speed Challenge (the day of the event). The Lego Build Challenge is Saturday, Feb. 26 at the Hermiston Public Library, 235 E. Gladys Ave. Build At Home entries will be accepted between 10-11 a.m. The speed challenge starts at 1 p.m. And awards will be presented at 2:30 p.m.

Advance registration is required to participate in either or both events. People can register at JB Brick Co., 295 E. Main St., Hermiston, or via www.jbrickcompany.com/event.

Age categories include



Erick Peterson/East Oregonian, File

Julie Lara, JB Brick Co. owner, poses with a Lego project on Oct. 21, 2021. The Hermiston Lego store is teaming up with the Hermiston Public Library for the Lego Build Challenge on Feb. 26, 2022. Those wanting to participate must register in advance.

young builders, ages 9 and younger; intermediate, ages 10-17; and adults. Prizes will feature JB Brick Co. gift cards, gift baskets and goodie bags.

For more information, visit the event website. For questions, contact 209-756-9898 or

jbrickcompany@gmail.com.

Schools cash in with BEO program

HEPPNER — The Bank of Eastern Oregon school mascot debit card program contributed more than \$8,400

to participating area high schools in 2021.

“The school mascot cards provide much needed extra funding for these student body programs,” Becky Kindle, the bank’s executive vice president and chief operations officer, said in a press release.

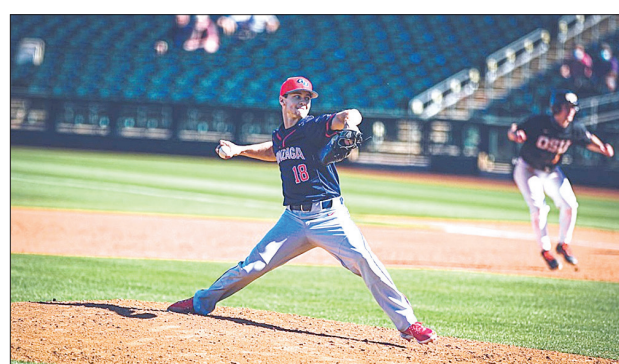
Initiated in September 2013, the BEO mascot debit card program serves several high school associated student body programs, including Heppner, Riverside, Irrigon, Ione, Condon and Weston-McEwen.

Use of the school mascot card generates 5 cents per transaction performed to that school’s program. Also, the \$10 annual renewal fee for each card goes directly to the school’s ASB.

For more information about the Bank of Eastern Oregon, stop by a local branch or visit www.beobank.com.

—EO Media Group

STUDENTS



Rob Naughton/Contributed Photo

Daniel Naughton, who plays on the Gonzaga University varsity baseball team, was named to the school’s President’s List on Feb. 3, 2022, for the fall 2021 semester. The 2018 Pendleton High School graduate is the son of Rob and Beth Naughton.

Gonzaga names Naughton to President’s List

SPOKANE — Daniel Naughton, a 2018 Pendleton High School graduate, has earned placement on the Gonzaga University President’s List for the fall 2021 semester. Students must

earn a 3.85 to 4.0 GPA to receive the honor.

Majoring in kinesiology, Naughton is a senior. He also plays on the school’s varsity baseball team.

Founded in 1887, Gonzaga is a private Catholic university in Spokane. For more information, visit www.gonzaga.edu.

—EO Media Group

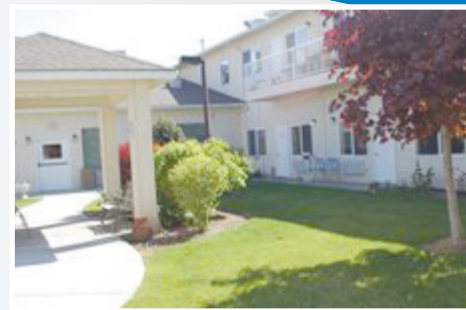
INSIDE OUR COMMUNITY, YOU'LL FIND THE WARMTH OF HOME PLUS ALL THE SERVICES & AMENITIES YOU'LL NEED UNDER ONE ROOF!



Sun Terrace Hermiston

A Retirement and Assisted Living Community

A REGENCY PACIFIC COMMUNITY



- 24-HOUR STAFFING & ON-CALL NURSE COVERAGE
- NUTRITIOUS, HOME-COOKED MEALS & SNACKS
- INDIVIDUALIZED & GROUP ACTIVITIES
- ASSISTANCE WITH BATHING, GROOMING, DRESSING & OTHER ACTIVITIES OF DAILY LIVING
- MEDICATION ASSISTANCE
- WEEKLY HOUSEKEEPING
- MITIGATED MOVE-IN & VISITATION PROCESS* IN PLACE TO PROTECT THE HEALTH & WELLNESS OF OUR RESIDENTS, EMPLOYEES & FAMILIES

541.564.2595

1550 NW 11TH ST, HERMISTON, OR | WWW.REGENCY-PACIFIC.COM

