

# 'Homecoming' exhibition opens Nightingale Gallery season

## Go! staff

**L**A GRANDE — The Nightingale Gallery at Eastern Oregon University opens its 2021-22 exhibition season with "Homecoming," an exhibit that welcomes EOU alumni — or at least their creative works — back to campus.

"Homecoming" presents a selection of work by 17 EOU art alumni and runs Oct. 8 through Nov. 5. The gallery is located in Loso Hall.

The work on exhibit encompasses a variety of media including drawing, painting, mixed media and sculpture. The artists represent a span of more than 20 years of art program graduates.

One artist is Josh McDonald, a 2014 graduate and native of Powell Butte. McDonald's paintings combine abstraction and symbolism to create a narrative described through geometric forms and inspired by early modern art movements such as cubism. His works are high in contrast and depth, shadow and light, and presented with a limited color palette. McDonald uses oil and cold wax medium to build up the surface of his paintings

## NIGHTINGALE GALLERY

Loso Hall, EOU

La Grande

11 a.m.-4 p.m.

Monday-Friday

and then drags a comb through the paint in angular lines. This interrupts the initial paint application and breaks through the hard edge to obtain a softness and a mixture of unique blends and texture.

McDonald, who now makes his home in Seattle, works for the Greg Kucera Gallery and has an active studio practice with several recent group exhibitions featuring his paintings at SEASON Gallery and J. Rhinehart Gallery in Seattle. McDonald's solo exhibition "Carry Me Through the Field" opened this October at Seattle's SOIL Gallery.

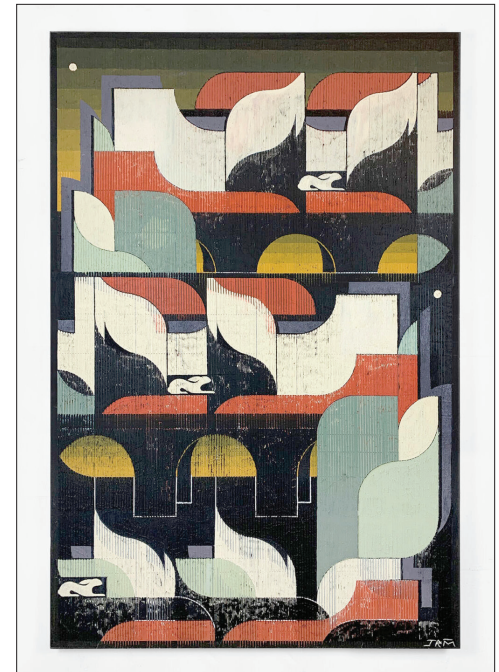
Meredith Matthews, a 2020 graduate, will present her mixed media installation "i am not what i might be." Using bird feathers, faux fur, painted duralar, bones and other materials, she attempts to capture the landscape of her lived experience with chronic pain. The processes

of the external, natural world — sedimentation, metamorphosis, sublimation, moulting, decay — become signifiers, descriptors for this internal world.

Matthews is a lifelong resident of the Grande Ronde Valley and is pursuing a master's degree in film at Queen's University Belfast, Northern Ireland. She is currently working on finishing her first short film, "Blood and Memory."

Other exhibiting artists include Bill Atwood (2006), Kevin Boylan (2003), Mariah Boyle (2009), Addie DeLong (2014), Annie Eskelin (2004), Devin Farrand (2009), Madeline Ford (2016), Genevieve Gaudreau (2016), Auburn Isaak (2012), Audrey Lind (2019) Meredith, Andrew Myers (1995), Dawn Norman (2006), Hannah Smith (2020) and Henrik Soerensen (2013).

"These artists present us with a varied collection of works exploring everything from abstraction and intimacy to feelings of loss and the intersection between production and aesthetics," said Cory Peeke, Nightingale Gallery director. "The art department is pleased to have such a diversity of thoughtful and visually skilled artists out in the world represent-



Josh McDonald/Contributed image  
This work, oil and cold wax on panel, was created by Josh McDonald and titled "Through the Touch of the Full Moon's Light."

ing the strengths of our program and this university. We are even more pleased they have chosen to come home to where they began their careers to share their creative work with our current students and the regional community."

Gallery hours are 11 a.m.-4 p.m. Monday through Friday. The public is welcome; masks are required. For more information visit [www.eou.edu/art](http://www.eou.edu/art) or follow Nightingale Gallery on Instagram and Facebook.



*Sign Up for  
Classes  
at  
Art Center East  
Today!*

VISIT  
[ARTCENTEREAST.ORG/LEARN/CLASSES](http://ARTCENTEREAST.ORG/LEARN/CLASSES)  
TO SEE THE AVAILABLE CLASSES  
OR CALL 541-624-2800

ART CENTER EAST  
1006 PENN AVE  
LA GRANDE, OR



ART  
CENTER  
EAST

HOURS:  
WED-FRI 12-5PM  
SAT 10AM-2PM