



# HOME OWNERSHIP

*The American Dream*

[www.eastnoregonranches.com](http://www.eastnoregonranches.com)



## Clark Jennings & Associates OR, LLC



Real Estate Services



**MILNE MCLAUGHLIN**  
Principal Broker/Owner  
541-377-7787 Cell  
milne@eastnoregonranches.com

**NED LONDO**  
Broker  
(509) 386-7541 Cell  
ned@eastnoregonranches.com

**SHELLY ZECKMAN**  
Principal Broker, GRI  
541-379-4382

**KIMEE HAGUEWOOD**  
Broker  
(541) 377-1700  
khaguewood9@msn.com  
Se Habla Espanol

614 SE Court Ave. • Pendleton, OR 97801 • 541-278-9275 • FAX 541-278-9279

We're here to help. Whether you're buying or selling a home, you can count on us for the experience and expertise to make it happen, even in a tough market like this.

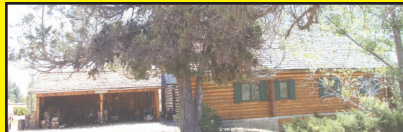
RESIDENTIAL

### RANCH HEADQUARTERS FOR SALE!



**305.86 ACRES WITH 3 HOMES**, shop, calving barn, machine shed, grainery, 7 silos that are all very well maintained!! 150 acres in spring barley, 156 approximate acres of wheat ground (summer fallow this year) and water rights. Come take a look at this established compound. **\$1,390,000**. Call Milne for more info 541-377-7787. RMLS# 17653650

RESIDENTIAL



**HUNTERS, TAKE A LOOK AT THIS!!** Nestled in this 118 wooded acres sits a gorgeous log home. This property includes shop, barn, wood shed, and is fully fenced. Would be a great hunting or summer retreat but also could live here full time. **\$525,000**. Call Milne for more info 541-377-7787. RMLS# 17323541

RESIDENTIAL



**SUNRIDGE ESTATES CUSTOM BUILT** 3 bed, 2 bath home on two view lots. Living and family rms, dining and breakfast nook. Fireplace, two offices, lots of storage. Finished shop is 30x40, two stories with 2 baths rec rm, guest quarters. Too many amenities to list!! Price is **\$339,000**. Broker owned. Call Milne @ 541-377-7787. RMLS# 16267208

LOTS



**SUNRIDGE ESTATES!! ONLY 7 RESIDENTIAL SIZE LOTS REMAIN STARTING AT \$20,000**. All utilities to lots. Great views. Give Shelly Zeckman a call 541-379-4382.

ACREAGE



**GREAT PRICE FOR THIS HORSE ACREAGE OVERLOOKING DAM!!** 9.65 acres with view of McKay Dam. Presently being used as horse pasture. Call Milne for more info 541-377-7787. Price is **\$135,000**. RMLS# 12541119

RESIDENTIAL



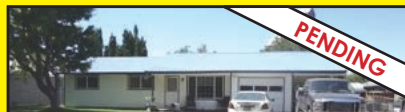
**BRING THE FAMILY AND PETS!** Spacious bright 4 bedroom 2 bath home. Gourmet kitchen complete with gas range, granite and custom cabinets. This is a great home to entertain including media and rec-room downstairs. Landscaped, fenced, with breathtaking sunsets from multiple deck. Call Kimee for more info 541-377-1700. **\$289,000**. RMLS# 17502890

RESIDENTIAL



**WANT A VIEW?** Take a look at this beautiful upgraded manufactured home that overlooks the city and has a mountain view! 3 bedroom, 2 bath with huge great room, this property is like new!!! Give Milne a call 541-377-7787 **\$229,000**. RMLS# 17632531

RESIDENTIAL



**A GREAT FAMILY HOME WITH LOTS TO OFFER!!!** 3 bedroom, 1.5 bath, 1192 sq. feet home with metal roof, updated vinyl windows, covered patio, fenced back yard, one car garage and carport. Come take a look!! Price is **\$145,000**. Call Ned for more info 509-386-7541. RMLS# 17119382

ACREAGE



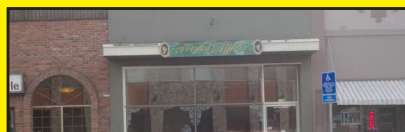
**83.16 ACRES WITH SPRINGS AT THE TOP OF THE HILL!!** Possible building site, buyers to check with CTUIR Planning and Building Dept. Nice views. One owner is licensed real estate broker in Oregon. CHECK THIS VIEW OUT!! **\$90,000**. Call Ned for more info 509-386-7514. RMLS# 17055176

ACREAGE



**THIS IS A GREAT BUY!!** 121.5 acres with 20 acres irrigated pasture, marketable timber and rangeland. Nicely maintained manufactured home, barn, shop, and utility building. Secluded property, ideal for horses, cattle and other livestock. Price is now **\$315,000**. Call Ned for more info 509-386-7541. RMLS# 16573184

BUSINESS



**GREAT LOCATION!** This is a prime location to start your business or move your present one!! Nice full window front for displays and several rooms for privacy or to break up the area. Call Ned 509-386-7541 for the details. Price is **\$129,000**. RMLS# 17158239

RESIDENTIAL



**SADDLE UP RANCH!!** Great 41 acre horse facility-irrigated paddocks w/sheds, two barns 18 stalls, shop/utility-hay shed. Covered arena, 2 bedroom, 1 bath apartment attached to barn. Solid set sprinklers and auto waterers, wash racks and more!! Great views of valley and Blue Mtns. One of a Kind property, close to town but secluded. Call Ned for more info 509-386-7541. **\$1,100,000**. RMLS# 17198197

RESIDENTIAL



**IMMACULATE HOME LYING ON 93.92 ACRES** between Pilot Rock and Pendleton. 3242 square feet includes 3bedrooms, 2.5 baths with attached guest house with 1 bedroom, 1 bath, and 2 car garage. Storage building has wood shed on one side. Approximately 26 acres in alfalfa, and 54.75 acres in Orchard Grass. Water rights, fenced, shop, hired hand house. This is the ranchette you have been waiting for. Call Milne 541-377-7787. **\$995,000**. RMLS# 17599570

RESIDENTIAL



**MOTIVATED SELLER!!! HARD TO FIND BUILDABLE 19.54 ACRES** off paved road with Great view of the Blue Mountains. Price is now **\$168,000**. Call Milne for more info 541-377-7787. RMLS# 17488545

ACREAGE



**WANT TO PLAN YOUR OWN HORSE ACREAGE? HERE YOU GO!** Here is one of those hard to find buildable acreages! 9.62 acres, with gorgeous views, a creek runs thru it! Presently in hay crop! Call Milne for all the details. Price is now **\$133,500**. RMLS# 11657442

RESIDENTIAL



**ACREAGE FOR HORSE/ANIMALS WITH IRRIGATION RIGHTS!** Triple wide family home with hardwood floors, travertine tile, Kraftmaid cabinets, granite countertops and new paint!! Fenced, UGS, 3 stall barn, 2 arenas, round pen, and alot more! Call Kimee, 541-377-1700 All for **\$369,000** RMLS# 17206672

RESIDENTIAL



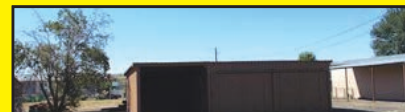
**GREAT HORSE PROPERTY!** 6.72 acres with custom built home, tool shed, tack room and arena. Great location in Lexington, only 20 minutes from I-84. Call Milne for more info 541-377-7787. **\$295,000**. RMLS# 17051483

RESIDENTIAL



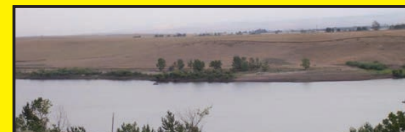
**THIS IS NOT A DRIVE-BY.** 2921 square feet with added on great room, master bedroom and bath making this a 4 bedroom 3 bath home all one one level. Kitchen has been remodeled, large lot on .38 of acre, fenced yard and underground sprinklers. All for **\$330,000**. Call Milne 541-377-7787. RMLS# 17259700

LOTS



**GREAT DOUBLE LOT IN RIVERSIDE.** Already has barn and shop. Water, sewer and electricity are available. A lot for **\$68,000**. Call Milne 541-377-7787. RMLS# 17604413

ACREAGE



**LOOKING FOR THE BEST VIEW IN PENDLETON?** THIS VIEW IS THE BEST!!! Ten beautiful buildable acres overlooking the dam. Buyer to drill own well. **OUTSTANDING VIEW!!** Call Milne for more info 541-377-7787. Price is now **\$159,000**. RMLS# 13307397

RESIDENTIAL



**BEAUTIFULLY UPDATED FAMILY HOME** with a view of the city has perfect blend of new with charm and character of 1910. This 2722 sq. feet home on .63 of an acre has hardwood floors, new kitchen, laundry, huge living room, family & dining rooms, Rv Hookup, fenced. A must see!! **\$270,000**. Call Kimee for details 541-377-7787. RMLS# 17432508

LOTS



**IF YOU ARE LOOKING FOR A BUILDING LOT IN MILTON-FREE-WATER TAKE A LOOK AT THIS!** Behind school, paved road on both sides! Seller will pay for 1/2 water and sewer costs hook-up not to exceed \$3500. Call Ned 509-386-7541 for more details. **\$34,500**. RMLS# 15694533