



**LYNN SMITH**  
Owner

*Pendleton Southgate  
Realty*



*"The gateway"  
to your dreams*



**MARGE LAPP**  
Principal Broker, GRI  
office# 541-276-1957  
541-276-3385  
skoqm4@gmail.com



1803 Emigrant Ave. Pendleton, OR 97801 • (541) 276-1957 FAX (541) 276-2714 • www.eastoregonrealestate.com

Umatilla County Board of  
Realtors and Affiliates

**FOOD DRIVE**

One can make a difference

**Dec.**  
1st-22nd

**Drop  
Off  
Location**



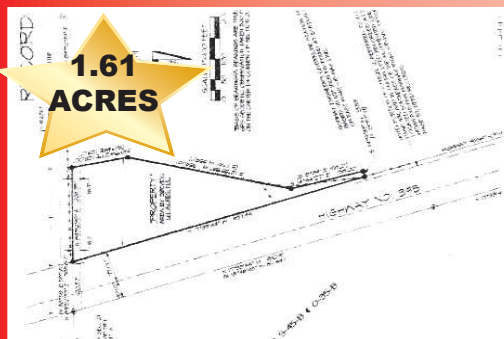
**THIS 1930's HOME HAS SOME REAL POSSIBILITIES WITH A LITTLE FIXIN'!!** Open floor plan with hardwood floors and built-ins next to unique fireplace. Charming bay windows face city lights from spacious dining room. 2 bedrooms up and newer walk-in shower installed in the bathroom. Basement needs work but may have options--family room etc. New gas F/A furnace in 2016. Sold in AS IS condition. Near old John Murray school. **MLS#17563767 CALL: Marge Lapp \$79,900**



**EXCELLENT INVESTMENT!!!** Well-maintained North Hill duplex . Side by side. Each unit (1,120 sq.ft. m/l) is 2 levels with both units having 2bedrooms | 1/2 baths, utility, private deck (up) & patio on lower level. Spacious enough to live in one side and rent the other. Lawn, off-street parking. Walking distance to town, park, river, schools, art center, restaurants & shops! **CALL: MARGE LAPP.** **MLS#17492954 \$185,900**



**INVEST IN THE WEST!!**  
**TRIPLEX**  
Well established with several recent updates. Two 1 bedroom units and 2-3 possible bedrooms on the large main floor unit which has new carpet, paint, vinyl, separate utility & small deck. Nice private yard with garden area & patio for barbecues etc.! Off-street parking. Good rental history! **CALL: MARGE LAPP.** **RMLS# 15428504 \$149,900**



**POSSIBLE TRADE FOR?** Near new hospital, Interpath Lab, clinics, dining etc. - this 1.61 AC (m/l) is just minutes from town on HWY 395. Newer well. Would be great place for that new home! **CALL: MARGE LAPP. 276-1957P.** **RMLS# 12398538 \$99,900**



**TAKE A LOOK AT ME NOW!!!** This 2bedroom Sherwood Sweetie has a brand new exterior paint job!! Some new interior paint also. Some HW floors under carpet. F/A heat, covered patio, storage shed. Room for a garden. Short distance to Medical Center, hospital, restaurants, parks and schools. Great first home or rental!! **CALL: MARGE LAPP.** **MLS# 16530010 \$107,900**



**NOW TAKE A LOOK!** This 23 acre Ranchette has just underwent a complete makeover!! Outside cleared, cleaned etc.--inside cleaned, painted etc. It's lookin' really spiffy! Great for horses, cattle, etc. Water rights, outbuildings. Awesome view of the Blue Mts. from the deck! Well-maintained 3 bedroom home with huge master. Open floor plan, 2 fireplaces. Cozy family room. Oversize double garage with shop & large equipment storage area. New roof. Minutes from town, hospital & Interpath Lab. Near McKay Dam for boating, fishing & wildlife! **CALL: MARGE LAPP.** **RMLS#16029884 ~~\$349,900~~ NOW \$339,900**



**AWESOME MOUNTAIN VIEWS!!!** You'll enjoy the sunrise from this unobstructed view of the Blues in this exceptionally nice, very well maintained 3 bedroom 2 bath home. Open floor plan. Large front deck. Large private fenced yard. Also included is an additional single detached garage and a storage building. Abundant off-street parking--room for Rvs etc. Schools nearby & walking distance to a park. **CALL: MARGE LAPP.** **MLS#17508289 \$159,900**

**THINKING ABOUT SELLING? NOW IS THE TIME!**