



**Kirk Makin**  
Principal  
Broker

(541) 398-0340



**Russ Ruonavaara**  
Broker

(541) 398-0618



**Kent Sands**  
Broker

(541) 263-1492



Let us assisted you will all your real estate needs!

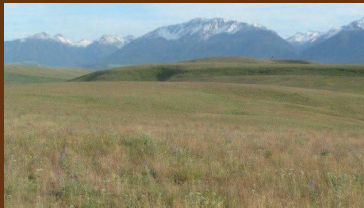


# WALLOWA COUNTY BROKERS

404 N. Main St. ~ P. O. Box 638  
Joseph, Oregon 97846  
541-432-3131 ~ 866-997-3131  
Fax: (541) 432-5780  
Email: wcb@frontier.com  
www.wallowacountybrokers.com



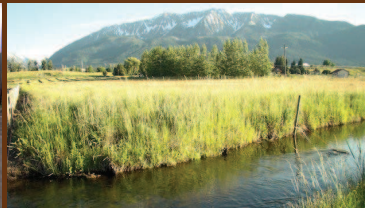
Great horse/cattle property. 140+ AC w/ 62 irrig. AC. Upgraded 4BR, 2BA home, barn, arena, livestock watering system & gravity sprinklers w/ irrig. equip. included. #17221748 \$739,000



Excellent 572 AC grazing land w/ 75 AC in tillable dryland farm ground. Several ponds for livestock water. Great deer hunting. Wallowa Mountain & valley views. #17338535 \$379,000



Great location! 14-unit motel w/ high visibility & lots of potential. Many upgrades including roof, flooring & bathrooms. Many units w/ kitchens & rented monthly. #17333996 \$395,000



Big unobstructed view on 1.94 AC creek front lot. 50 gallon/minute domestic well in place & standard septic approved. Great for building your dream home. #17664760 \$129,000



Great 35+ irrigated AC w/ gravity sprinklers. Custom 4 BR, 3 BA home w/ lots of amenities. 2-car garage & lg. shop. Excellent mountain & valley views. #17267438 \$780,000



Premier cattle & hunting ranch on 2,770 AC. Timber, creeks, springs & 30 AC of irrigated meadows for grazing cattle. Bunk house, corral & barn. #17591831 \$2,300,000



Nice 3 BR, 2 BA on 10+ AC. Property is a Tree Farm program. Double garage/ shop, lean-to & 3 separate sheds. Great mountain & valley views. #17054898 \$399,000



Top quality Zumwalt Prairie grass ranch on 597+ AC w/ great elk & deer hunting. Year around springs. Great access plus big views & elk & deer. #17414245 \$446,000



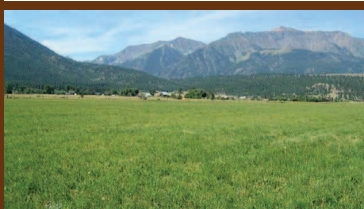
Custom 10 BR, 4 BA on 10 AC w/ Imnaha River frontage, great hunting, fishing & other activities. Near NF lands. Handicap room & access. Currently a B&B. #17171858 \$1,490,000



Great hunting & pasture on the Divide Ridge with 393 AC. Threebuck Creek & year around springs. LOP tags & acres of timber & amazing mountain & valley views. #17074578 \$399,000



Custom built 2 BR, 2 BA home w/ Big Sheep Creek frontage on 12+ AC in Imnaha. Secluded & on private road. Great garden & orchard. Insulated shop. #11529992 \$325,000



Buildable 20+ AC, gentle slopes & level ground for building. Gravity sprinkler irrigation. Very productive tillable farm ground & great mountain views. #16079142 \$235,000



Nice 2 BR, 1 BA w/ Imnaha River frontage. New Hardy Board siding, 2-car garage & walk-in cooler. Nice landscaped, fruit & nut trees & nice garden spot. #16164099 \$275,000



Gorgeous Grande Ronde River front on 214+ AC in Elgin. Timbered areas & grazing land. Great access. River frontage is very private. Great hunting & fishing. #17093052 \$275,000



Nice buildable pasture on small acreage lot w/ Imnaha River frontage. This lot is located on the north edge of Imnaha & has great views. Good fishing. #16555313 \$129,000



Buildable 180 AC w/ huge views & great pasture land. Some non-irrigated crop land. The mountain & valley views are exceptional. Power is available. #16432578 \$189,000



Nice 629+ AC cattle grazing & timber ranch in Lostine. Great hunting & LOP tags. 110 AC that were in CRP. Two ponds & seasonal streams & great views. #16398296 \$640,000



Beautiful remote 4 BR, 2BA home on 8.35 AC in Troy. Home has 3 levels of living space w/ 2-car garage w/ work shop, patio & outbuildings. Surrounded by wildlife. #16503112 \$299,000



Buildable 5 AC view parcel. Irrigation water rights. Tillable land currently raising hay. Parcel is minutes from downtown Joseph. Poss. Owner Terms. #15522076 \$160,000



Buildable lot on the shores of Wallowa Lake. Nice level lot w/ water certificate, close to lake activities & minute to Joseph. Possible owner terms & Broker owned. #15491755 \$249,000



Grazing & elk & deer hunting on 1,040 AC w/ lower elevation for early season grazing. In rural Joseph w/ Coyote Creek Rd. & Dead Horse Ridge Rd. access. #14312582 \$520,000



Buildable 125 AC parcel w/ big panoramic views, great pasture land w/ some tillable farm ground. Recently in CRP. Great home site w/ paved county road. #13127730 \$249,000



Buildable gorgeous & private 7+ AC on south end of Wallowa Lake. Borders National Forest. Underground power, sewer & water to parcel. Great access & private. #11646196 \$119,000



160 AC w/ approx. 1/4 mile of Wallowa River frontage. Historic barn & building site w/ view of the river. Has many potential uses. Sits 1/4 mile Hwy 82. #15522012 \$425,000



Beautiful 2+ AC in a great country setting w/ unobstructed views of the Lostine Canyon. Irrigation rights & on a paved country road. Poss. Owner Terms! #9048053 \$109,000