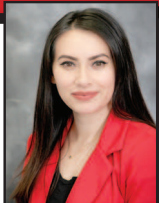


Each office independently owned and operated

RE/MAX[®]
Cornerstone

1055 S. Hwy 395,
 Suite 313,
 Hermiston, OR 97838
541-289-5454
 Fax: 541-289-5456
 hermistoncornerstone.com



GREAT PIECE OF PROPERTY!
 ON NORTH WEST SIDE OF HERMISTON

Jessica Rosas
 Broker
 541-701-6163



Price Reduced!

COME CHECK OUT WHAT THIS CUTE HOME HAS TO OFFER AND BRING THE WHOLE FAMILY! This 6 bedroom, 7 acres (no water rights), and a 30X40 shop has enough room for your 4-wheelers, goats, chickens or whatever it is you like-there's room and lots of parking! Sellers have made recent repairs to the roof! Home is being sold as-is! **RMLS 17271611 \$209,000**

Preferred Realty Inc.
541-567-7337
 705 S. First St. • Hermiston, OR
www.hermistonrentals.com
www.hermistonhome.com

Randy Randall
 Principal Broker
 Licensed in OR
 541-561-4710 cell

Lezlee Gunsolley
 Principal Broker
 Licensed in OR
 541-561-5507 cell



INCOME PROPERTY PAYS FOR ITSELF!
 Block Construction Retail Office Building
 GREAT LOCATION! C-1 zone,
 Shared Paved Lot, 10,600 Sq Ft Building
 with 4 restrooms Tons of Parking!
 RMLS 9077743 / **\$583,000**
 Call Randy (541)561-4710

EASTERN OREGON
REAL ESTATE
 & HOMEBUILDERS GUIDE

WEST ZONE

TABLE OF CONTENTS

Service Directory2W
 Subscribe to REG 14W

Morrow County:

Mt. Valley Land Co 16W, 17W

Umatilla County:

American West Properties, Hermiston ... 9W,
 10W-11W, 12, 13W

Fordice Real Estate Services, Inc..... 17W

Hermiston Realty ... 17W, 18W-19W, 20W

Preferred Realty, Inc..... 3W, 4W

RE/MAX Cornerstone 4W, 5W

Universal Realty 6W-7W, 8W

Miller Realty 14W, 15W

C Holt Real Estate 14W

Affiliates:

Home Town Mortgage Group 1W

Umatilla County Board of Realtors 8W

Bank of East Oregon 13W

Landmark Professional Mortgage..... 13W

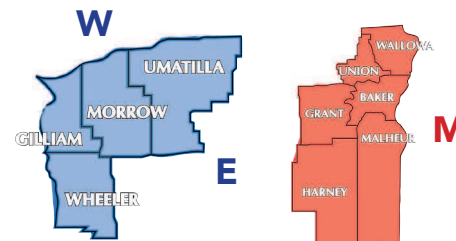
Advertising Sales

Jeanne Jewett • Audra Workman • Dayle Stinson

Terri Briggs • Danni Halladay • Angela Treadwell

To Advertise in the Eastern Oregon Real Estate & Homebuilders Guide Contact
 541-278-2670 • 1-800-987-7511 • realestate@eastoregonian.com

EO Media Group • 211 SE Byers • Pendleton, OR 97801



W = WEST: Umatilla, Morrow, Gilliam & Wheeler Counties
E = EAST: Umatilla, Morrow, Gilliam & Wheeler Counties
M = MOUNTAIN: Union, Wallowa, Baker, Grant, Malheur & Harney Counties

June 2017, Volume 32, Number 6 Eastern Oregon Real Estate & Home Builders Guide is published monthly by the East Oregonian Publishing Company, 211 SE Byers, Pendleton, Oregon 97801. Subscription rates are \$16 for 12 issues. Third-class postage paid at Pendleton, Oregon. For subscription service questions, call (541) 278-2670 or 1-800-987-7511 or write Eastern Oregon Real Estate & Home Builders Guide, 211 SE Byers, Pendleton, Oregon 97801. All real estate advertising in this paper is subject to the Federal Fair Housing Act of 1968 which makes it illegal to advertise "any preference, limitation or discrimination based on race, color, religion, sex, handicap, familial status or national origin, or an intention to make any such preference, limitation or discrimination." This paper will not knowingly accept any advertising for real estate which is in violation of the law. Our readers are hereby informed that all dwellings advertised in this paper are available on an equal opportunity basis. The information in this paper is deemed to be correct but not guaranteed. All properties or information contained in this paper are subject to prior change, modification, sale, or withdrawal from the market. Copyright© 2016 EO Media Group. All rights reserved.



www.eastoregonrealestate.com