

# Kid Scoop

THE AWARD-WINNING PRINT & ONLINE FAMILY FEATURE



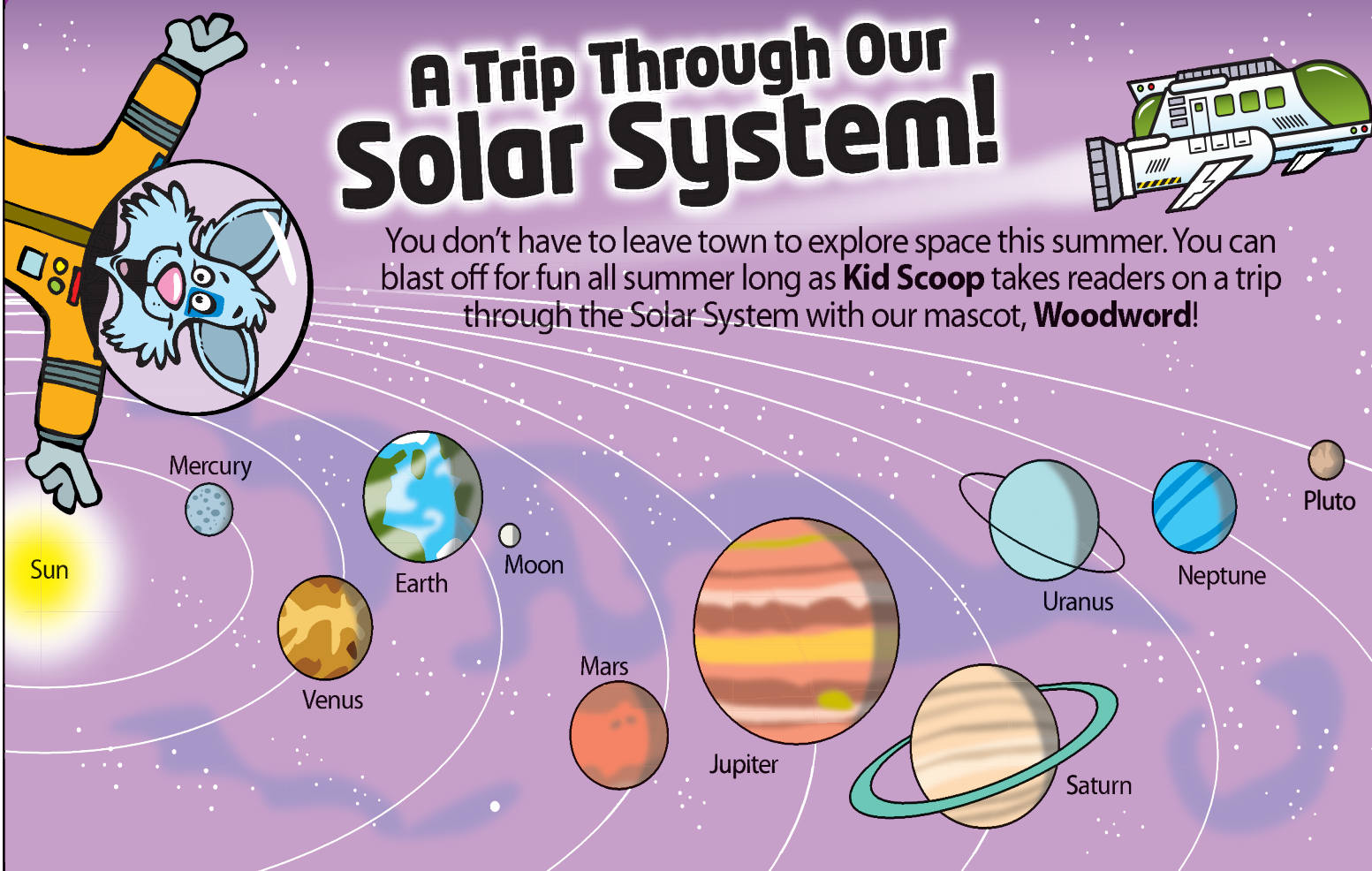
© 2017 by Vicki Whiting, Editor Jeff Schinkel, Graphics Vol. 33, No. 26

## Kid Scoop Together:

### Make a Scale Model of the Solar System

# A Trip Through Our Solar System!

You don't have to leave town to explore space this summer. You can blast off for fun all summer long as **Kid Scoop** takes readers on a trip through the Solar System with our mascot, **Woodward!**



This activity from NASA explains how to use beads and string to make a model that shows the relative distances between the sun and planets in our solar system. For the full directions go to: [jpl.nasa.gov/edu/teach/activity/solar-system-bead-activity/](http://jpl.nasa.gov/edu/teach/activity/solar-system-bead-activity/)

Start your scale model by cutting a 5.0 meter piece of string and tying the largest "sun" bead to one end using a double knot.

Using the distances in centimeters, measure the distance from the sun on the string to each planet.

Tie a colored bead in place for each planet using a double knot. *Note: The bead colors are rough approximations of the colors of the planets and the sun. However, you can use whatever color of beads you have handy.*

- Sun  
0 cm  
Yellow
- Mercury  
4 cm  
Solid Red
- Venus  
7 cm  
Cream
- Earth  
10 cm  
Clear Blue
- Mars  
15 cm  
Clear Red
- Jupiter  
52 cm  
Orange
- Saturn  
96 cm  
Clear Gold
- Uranus  
192 cm  
Dark Blue
- Neptune  
300 cm  
Light Blue

## Spacey Names



Our Solar System formed in the Milky Way galaxy about 4.6 billion years ago.

The sun is at the center of the solar system. Eight planets and their natural satellites which include Earth's moon, dwarf planets, asteroids, comets and meteoroids orbit or revolve around the sun because of its gravitational pull.

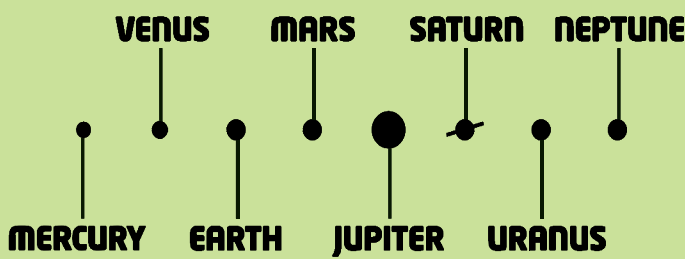
There are billions of other solar systems in our galaxy and there are billions of galaxies in the Universe.

## Planet Memory Trick

One way to remember the order of the planets in our solar system is to make up a sentence with each word starting with the first letter of a planet, starting with the one closest to the sun. This example worked when Pluto was still considered a planet:

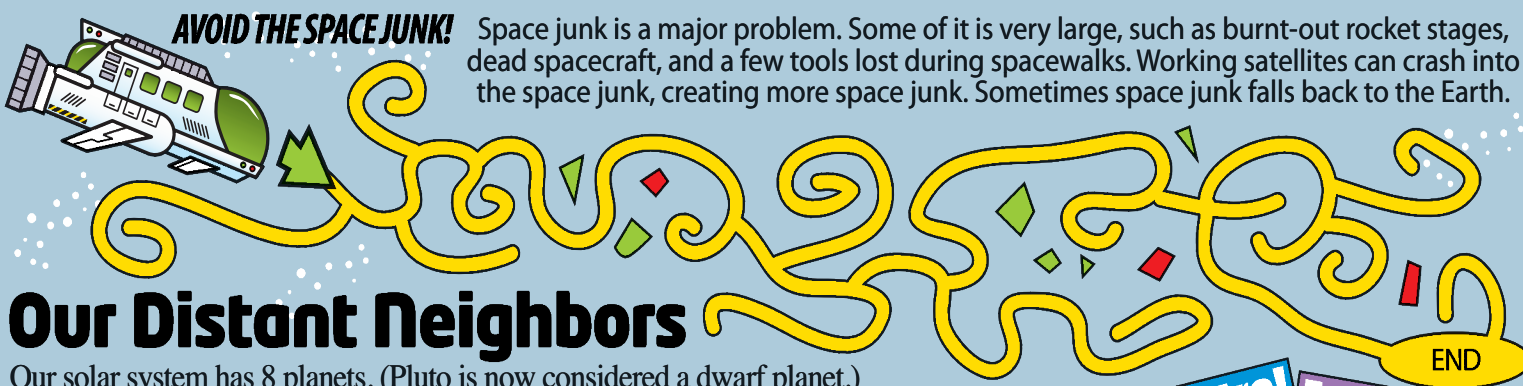
### My Very Educated Mother Just Served Us Nine Pizzas

Can you make up a new sentence without a word starting with P?



## AVOID THE SPACE JUNK!

Space junk is a major problem. Some of it is very large, such as burnt-out rocket stages, dead spacecraft, and a few tools lost during spacewalks. Working satellites can crash into the space junk, creating more space junk. Sometimes space junk falls back to the Earth.



## Our Distant Neighbors

Our solar system has 8 planets. (Pluto is now considered a dwarf planet.) Scientists continue to study our fellow planets, even though they are far, far away. Do the math to find out how long it would take to get from Earth to each planet in our solar system.

NOTE: This is not an easy question to answer. The length of time depends upon many different factors, including the spacecraft used and the location of each planet in its orbit. The time periods here are approximated and refer to the previous spacecraft that flew to or near each planet.

MERCURY:	3 + 4 =	YEARS
VENUS:	10 + 5 =	MONTHS
MARS:	3 + 3 + 1 =	MONTHS
JUPITER:	2 + 2 + 2 =	YEARS
SATURN:	10 - 3 =	YEARS
URANUS:	6 + 3 =	YEARS
NEPTUNE:	15 - 3 =	YEARS

## Number Game

Each player needs a page from the sports section. In one minute, each player circles as many numbers as they can. Who can circle the most? Who can circle the most over 50? Whose numbers add up to the largest sum? Whose numbers add up to the lowest sum?

Standards Link: Language Arts: Follow simple written directions.

## Kid Scoop Puzzler

If you wanted to approximate the size differences of the planets in our solar system, you could use these foods to do it. Unscramble the letters below each food to reveal which planet is which.

pea CURRYEM	lemon SUNRUA	grape SEVUN	pumpkin PITRUJE
cherry THERA	cantaloupe NURATS	plum PETENUN	
blueberry SRMA			

Standards Link: Reading Comprehension: Follow simple written directions.

## Double Double Word Search

Find the words in the puzzle. Then look for each word in this week's Kid Scoop stories and activities.

- SPACECRAFT
- MERCURY
- NEPTUNE
- SYSTEM
- URANUS
- SATURN
- PLANET
- VENUS
- EARTH
- ORBIT
- SPACE
- PLUTO
- SOLAR
- JUNK
- MARS

A	R	K	U	V	O	E	S	O	Y
A	A	E	N	R	N	R	G	E	O
F	L	C	D	U	A	I	B	S	C
P	O	A	T	M	J	N	O	I	O
L	S	P	V	V	E	N	U	S	T
A	E	S	N	R	U	T	A	S	U
N	H	T	R	A	E	E	S	R	L
E	Y	M	E	R	C	U	R	Y	P
T	F	A	R	C	E	C	A	P	S

Standards Link: Letter sequencing. Recognized identical words. Skim and scan reading. Recall spelling patterns.

## Kid Scoop VOCABULARY BUILDERS

This week's word: **APPROXIMATE**  
The verb **approximate** means to come close to something in quality, size or nature.

The astronaut had to **approximate** the distance to the planet.

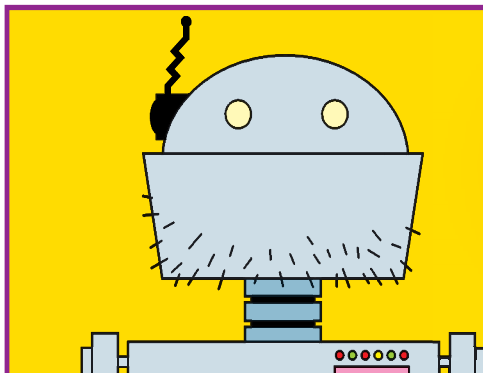
Try to use the word **approximate** in a sentence today when talking with your friends and family.

## FROM THE Kid Scoop LESSON LIBRARY

### Package from Earth

Pretend you are sending a package into space that, if life on other planets exists, will tell about life on Earth. Find newspaper pictures and articles that you would put into the package. Tell why you selected each.

Standards Link: Research: Use the newspaper to locate information.



## How does a robot shave?

ANSWER: With a laser blade.

## Write On!

### BEST BOOK OF THE SUMMER!

Tell other kids about a book you think they should read this summer. Have fun describing the details but don't give away the ending!