



**Kirk Makin**  
Principal  
Broker

(541) 398-0340



**Russ Ruonavaara**  
Broker

(541) 398-0618



**Kent Sands**  
Broker

(541) 263-1492

Let us assisted you will all your real estate needs!



# WALLOWA COUNTY BROKERS

508 N. Main St. ~ P. O. Box 638  
Joseph, Oregon 97846  
541-432-3131 ~ 866-997-3131  
Fax: (541) 432-5780  
Email: [wcb@frontier.com](mailto:wcb@frontier.com)  
[www.wallowacountybrokers.com](http://www.wallowacountybrokers.com)



Boise Cascade modular 3 BR, 2 BA on 10+ AC. Property is a Tree Farm program. Double garage/ shop, lean-to & 3 separate sheds. Valley & mountain views. #17054898 \$399,000



Great trophy elk hunting on 1,198+ AC in Imnaha. Very private & secluded w/ nice pasture & wooded areas. Pond, spring & seasonal creeks. #17154801 \$539,000



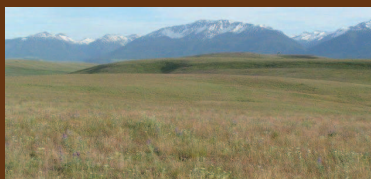
Custom 10 BR, 4 BA on 10 AC w/ Imnaha River frontage, great hunting, fishing & other activities. Near NF lands. Handicap room & access. Currently a B&B. #17171858 \$1,490,000



Timbered 306 AC w/ grazing & great hunting just north of Joseph Canyon overlook. Year around access, great hunting w/ LOP tags. Nice trees & views! #17386497 \$336,000



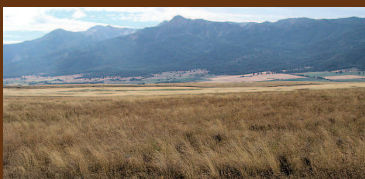
15-unit motel in a great location w/ high exposure in Enterprise. Well kept & many new upgrades on roof, flooring & bathrooms. Call for more details. #17361669 \$495,000



Excellent 572 AC grazing land w/ 75 AC in tillable dryland farm ground. Several ponds for livestock. Great deer hunting. Great Wallowa Mountain views. #17338535 \$379,000



Well maintained 3 BR, 2 Bath on corner lot. Large family/TV room off dining area. Big backyard w/ alley access to a garage/shop. Decks on front & back. #17089502 \$230,000



Great mountain & valley view on 400 AC of grazing land & 103 AC of non-irrigated farm land in Enterprise. Great deer hunting. Ponds for livestock water. #17231956 \$269,000



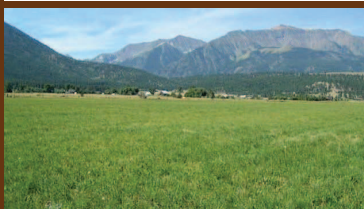
Nice 2 BR, 1 BA w/ Imnaha River frontage. New Hardy Board siding, 2-car garage & walk-in cooler. Nice landscaped, fruit & nut trees & nice garden spot. #16164099 \$275,000



Great hunting & pasture w/ 393 AC on the Divide Ridge. Threebuck Creek & year around springs. LOP tags. Acres of timber & amazing views. #17074578 \$399,000



Spacious 3 BR, 1.5 AB on 57.4 X 112 lot. Many upgrades, refinished wood floors, new furnace, new flooring & new appliances. Home has lots of character & style. #16073068 \$164,000



Buildable 20+ AC, gentle slopes & level ground for building. Gravity sprinkler irrigation. Very productive tillable farm ground & great mountain views. #16079142 \$235,000



Cabin & 3 BR, 1 Ba manuf. Home on 3 dividable lots w/ creek & at south end of Wallowa Lake. Garage & patio w/ fire pit. Cabin is a fixer w/ potential. #14614358 \$285,000



Gorgeous Grande Ronde River front on 214+ AC in Elgin. Timbered areas & grazing land. Great access. River frontage is very private. Great hunting & fishing. #17093052 \$275,000



Custom built 2 BR, 2 BA home w/ Big Sheep Creek frontage on 12+ AC in Imnaha. Secluded & on private road. Great garden & orchard. Insulated shop. #11529992 \$325,000



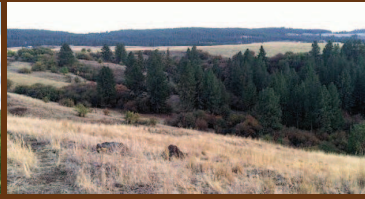
Nice buildable pasture on small acreage lot w/ Imnaha River frontage. This lot is located on the north edge of Imnaha & has great views. Good fishing. #16555313 \$129,000



Nice 629+ AC cattle grazing & timber ranch in Lostine. Great hunting & LOP tags. 110 AC that were in CRP. Two ponds & seasonal streams & great views. #16398296 \$640,000



Excellent 606 AC of non-irrigated crop land. 435 AC tillable AC w/ seasonal creeks. Patches of timber allows for excellent elk, deer, grouse & turkey hunting. #16330570 \$599,000



Buildable 160 m/ AC w/ tillable non-irrigated farm ground & timbered. Great elk, deer & bird hunting & LOP tags. Home site ready to build, electricity available. #16226594 \$149,900



Buildable lot on the shores of Wallowa Lake. Nice level lot w/ water certificate, close to lake activities & minute to Joseph. Possible owner terms & Broker owned. #15491755 \$249,000



Grazing & elk & deer hunting on 1,040 AC w/ lower elevation for early season grazing. In rural Joseph w/ Coyote Creek Rd. & Dead Horse Ridge Rd. access. #14312582 \$520,000



Buildable 24 tillable irrigated acres. Nice 360 degree views and has year around great access from a paved county road. #13406905 \$219,000



Buildable gorgeous & private 7+ AC on south end of Wallowa Lake. Borders National Forest. Underground power, sewer & water to parcel. #11646196 \$119,000



160 AC w/ approx. 1/4 mile of Wallowa River frontage. Historic barn & building site w/ view of the river. Has many potential uses. Sits 1/4 mile Hwy 82. #15522012 \$425,000



15 AC parcel w/ underground utilities, phone, water, power & underground irrigation to lot boundary. Can be divided into 5 AC parcel. Great views! #13336106 \$250,000