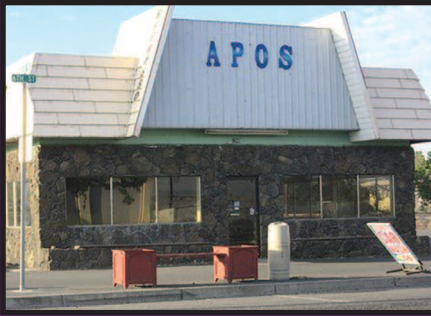


HERMISTON REALTY



CHECK US OUT
ONLINE



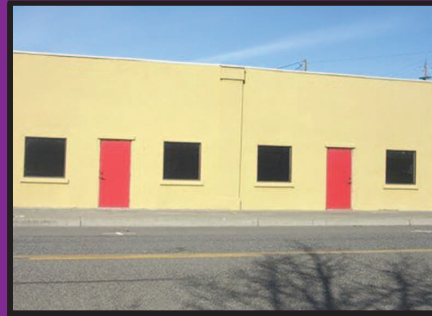
GREAT LOCATION FOR YOUR CREATIVE RESTAURANT ENDEAVORS. 1A corner location within a block of high school and the center of City of Umatilla. **\$200,000.** Call **Donn 541-571-2121.** RMLS #16227555



WHAT AN OPPORTUNITY TO ACQUIRE THIS MUCH PROPERTY IN THE MIDDLE OF UMATILLA. 5.63 acre of commercial property as a restaurant, lounge and retail store and parking. Get of the growth that this area is about to gain. Location could not be better. Call listing for viewing. Qualified buyers only please. **\$495,000.** Call **Donn 541-571-2121.** RMLS #16036068



A GREAT OPPORTUNITY TO HAVE TWO RENTALS OR A BUSINESS IN ONE AND AN INCOME FROM THE RENTAL NEXT DOOR. Or start a business in one and as you grow, have the ability to expand into the next space. Located across from the Fire Station downtown Umatilla. **\$175,000.** Call **Donn 541-571-2121.** RMLS #16282062



GOLDEN OPPORTUNITY TO WALK IN AND MAKE THIS STRUCTURE INTO YOUR DREAM BUSINESS. Could be divided into two locations. One side has office and bath and the other side has overhead cover for range. Basics are all done...just need to finish inside to fit your business needs. Seller will consider all offers. Don't miss out of this location. Also includes the paved parking lot on east side of building. **\$200,000.** Call **Donn 541-571-2121.** RMLS #16148777



LOCATED ACROSS FROM RIVER VIEW SUBDIVISION ON POWERLINE AND PINE TREE LANE. Water, sewer, power available. 2.33 acreage with possible owner carry contract. Overhead power lines makes part of the property NO buildings. **\$79,500.** RMLS# 17638629. Call **DONN 541-571-2121.**



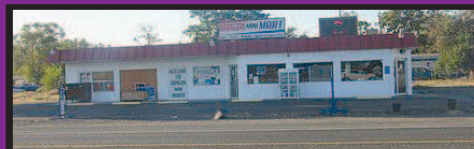
CUSTOM HOME 4606 SQ. FT. HOME plus 40x60 shop located in Blake Ranch. Total privacy with open rooms, state of the art appliances, cabinets, a master's master suite, private guest quarters, lots of decks to capitalize on the mountain setting. Deer and wild turkeys are like pets. This is a must see if you want the best of everything. Make an appointment today. Pre-qualified buyers please. **\$499,900,** Call **Donn 541-571-2121.** RMLS #14099623



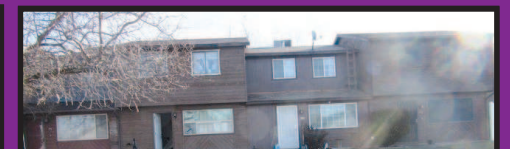
FRESHLY UPDATED FOUR BEDROOM HOME. Located on 8.82 Acres of good ground (ideal for orchards or vineyard) located in wine country. Per owner approx 2000 sq ft home on main level has been updated with flooring, carpets, kitchen cabinets and counters, bathrooms and living area with a full basement to be finished by the buyer. County says 3108 sq ft total. A rare find!!! Call **Donn 541-571-2121.** **\$399,950** RMLS #16181306



IDEALLY LOCATED ON HWY 395 MINUTES FROM I-82, I-84, HWY 730 AND HWY 207. LSecurity fenced with pavement and graveled parking, two building both with 14 ft. doors at each end. One approx. 2200 sq. ft. with concrete floor and other has finished offices up and down with bathrooms and heated. 1.78 acres with approx. 400 feet of Hwy frontage. Price has been reduced to sell...**\$395,000.** Call **Donn 541-571-2121.** RMLS #16340637



GOLDEN OPPORTUNITY TO BE YOUR OWN BOSS WITH UNLIMITED POSSIBILITIES. You can purchase your own real estate and business, all packaged for you to begin the first day of the rest of your life. **\$300,000.** Call **Donn 541-571-2121.** RMLS #16519598



NOT MANY TO CHOOSE FROM! Nice 2 bedrooms, one and a half bath, lots of improvements within the last four years. New dishwasher in 2017. Light fixtures, sinks and toilets, new solar shades, new paint, new siding and HVAC. Even has outside storage unit. Will not last! Call today for an appointment. Need 24 hour notice, has a tenant. **\$96,500.** RMLS# 17571793. Call **DONN 541-571-2121.**



LOCATION COULD BE DEVELOPED INTO BUSINESS CENTER by combining neighboring properties with this into profitable venture. Shopping mall, box stores, restaurants, service stores, etc. **\$400,000.** Call **Donn 541-571-2121.** RMLS #16422175



THIS PROPERTY IS FOR DEVELOPERS; INVESTORS CONSIDER PROVIDING NEEDED INVENTORY. This property comes with views of The Columbia River, rolling hills, storm watching & Oregon/Washington bridge. It's a hwy 730 commute, a crossroads to Hwy 82. This 9.54 acres of Umatilla's South Hill will develop with return with the surrounding industrious growing communities. PowerlineRd (SouthHill) take Madison-W-McFarland-Right-Roosevelt-left-field



PENDING
C... OF THE STREET
... . Three bedroom, two baths,
... an... belongs to tenant. Priced to sell.
Please respect the tenant. Do not go to property without an appointment and an agent. Call today! 24 hour notice required. \$182,000. RMLS# 17496517. Call **DONN** tel:541-571-2121.



BEING REZONED FROM R-4 TO COMMERCIAL, so with surrounding property holders may develop the land into a commercial landscape. Box stores, restaurants, businesses. Access to be off of Theater Lane. Combining neighboring properties to be one development. **\$350,000.** Call **Donn 541-571-2121.** RMLS #16317515