

# MALHEUR REALTY

1461 S.W. 4th Avenue • Ontario, Oregon 97914

[www.MalheurRealty.com](http://www.MalheurRealty.com)
Licensed in Idaho & Oregon  
Independently Owned and Operated.

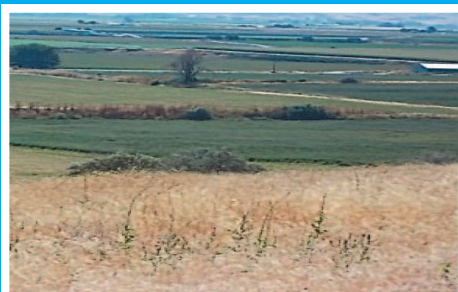
541-889-5800 • 888-292-5877 Toll Free

**Larry Wilson,**  
Principal Broker/Owner  
208-739-8383  
**Donna Murdock,** Broker  
208-880-4938  
**Travis Currey,** Broker  
541-212-1871

**Chad Currey,** Broker  
541-212-3880  
**Richard Teramura,** Broker  
541-212-6886  
**Jim Maret,** Broker  
541-709-8239



**\$209,000 Home in the Country-** 3 bdrm, 2 bath 1636 sq ft on 6+ acres, 5 acres of water rights. Large living room with decorative ceiling, dining room with a view. Spacious kitchen with skylights. Master bdrm with 2 walk-in closets and soaker tub. Fully fenced with year round running creek, 7 stall horse barn, 24x24 garage, garden space, outdoor sheds, RV parking. Enclosed back porch with heat and AC. Large covered front deck with railing. New roof. Newly painted inside and out. Close to the river and boat ramp. **MLS#98628005 1942-16 Call Chad**



**\$850,000 Ontario Ranch-** Nice hay ranch with 950 head CAFO permitted feed lot. Feed lot has been recently rebuilt and is in use. Farm ground is flood irrigated with gated pipe. Home has had some updates and offers lot of room. Property also has a machine shed, milk barn, and a vet shed. Heated with forced air oil stove and has central AC. **MLS#98627402 1941-16 Call Travis**



**649,000 Ontario Farm-** 121.35 total acres N of Ontario. 95 acre Owyhee Irrigation District Water right. 86.3 acres farmable according to SWCD. Currently leased 72 acres for organic farming (certified). In corn and tritcale. 2 homes- 1 has 2575sq ft and 1 has 2258 sq ft. There is a 30'x72' shop with a 24'x72' lean to, 28'x28' shop, 50'x120' hay storage shed. Irrigated with gated pipe and wheelines. Has a pond and gravel pit. Call for more information. **MLS#98626842 1935-16 Call Larry**



**\$399,000 Country Living!! -** 6 bdrm 3 bath 3760 sq ft home. 3bd,2bth on mail level including a master bath w/jetted tub & walk in closet. 3 bdrm, 1bth & living room with lots of storage downstairs. Kitchen has quartz counter tops and upgraded appliances including a double oven and induction stove top. Family room has gas fireplace and French doors that open out onto the deck for entertaining. 30x38 fully finished shop with 220power. RV parking, big yard, pressurized underground sprinklers from irrigation water \$133yr. **MLS#98618427 .1927-16 Call Chad.**



**\$550,000-Beautiful home on 40 acres North of Ontario-** Built in 2003. 2913 sq ft on one level. Appliances included. Granite countertops in kitchen. 6 burner gas Jenn-Aire range/oven & knotty pine cupboards. Island. Fireplace in great room. Formal dining. Central vac. 30'x60' shop finished inside. 16'x30' storage lean-to E side and 24'x32' covered storage on N side of shop. Barn. 6 big gun sprinklers for pasture with solid set hookups. 500 gal propane tank for water heater and kitchen stove. 100 gal water heater. **MLS 98619733/98619738 1930-16 Call Larry**

# WALLOWA MOUNTAIN PROPERTIES, INC.



## Real Estate Professionals

### Two Convenient Locations on Highway 82

309 S. River St., Ste D • Enterprise, OR 97828  
541-426-3026

203 N. Main St., #5 • Joseph, OR 97846  
541-432-7653 • 800-597-7169



**BEAUTIFUL HOME ON 59 ACRES** on Alder Slope outside Enterprise with amazing views! High quality 1916 sq.ft. one-level with 3 bedrooms, 2.5 baths & a two-car garage. Open kitchen with hickory cabinets. Corian counters and walnut floors. RV pad with clean-out. Pasture with water rights. **RMLS#15680445 - \$725,000**



**5.31 IRRIGATED ACRES** with ponds, mountain views, greenhouses, fruit trees, historic barn and a white picket fence. 3,334 sq. ft. classic 2 story farmhouse with full apartment. 4 bedrooms, 3 bathrooms with many recent updates awaiting your finishing touches. New electric heat pump & air cond, hot tub, solar hot water heater, new siding. **RMLS#14185090 - \$375,000**



**2 STORY CRAFTSMAN STYLE 1920'S HOME** LOCATED IN WALLOWA. 4 bedrooms, 2 full baths, open floor plan with living room, family room, sun room with original wavy glass, laundry room and a cellar. Upstairs bath has soaking tub with sky light and a 2 headed shower. The kitchen has hickory cabinets. Propane furnace and central air, updated electrical, most windows are updated. 2896 sf plus 240 sf cellar. The home has a classic white picket fence and a covered front porch. **RMLS#16395867 - \$185,000**



**PRIVACY, TREES, PASTURE AND A MOUNTAIN VIEW!** This acreage feels remote but is only about 4 miles to Joseph. Treed around existing home site plus a smooth wire fenced grassy meadow for grazing with a hay barn. Pole barn and other outbuildings for storage. Foundation, electrical, spring fed water system, septic are there or choose another site on this beautiful acreage. This property has one of the best sledding hills in our area. **RMLS#16688895 - \$179,000**



**AMAZING BUILDING LOT CLOSE TO DOWNTOWN JOSEPH.** Exceptional views of Wallowa Mountains and the Seven Devils in Idaho. Year round water along the North property line is a wonderful feature. Underground Power. 50 gallon/minutes well in place. Approved for standard septic system. Irrigation rights with buried pipe. Driving range and putting greens next door. Close to K-12 school. **RMLS#16307854 - \$115,000**



**THREE BEDROOM, ONE BATH SOLID OLDER HOME.** Hardwood floors, full basement and a 2 car garage. 15,800 square foot lot with huge back yard - great for kids or a large garden. Lots of potential for remodel that would add value to the home. Don't miss out on this one! **RMLS#16362531 - \$128,000**



**REMODELED COLONIAL STYLE HOUSE WITH 3 BEDROOMS AND 2 BATHS.** Large 1620 sq. ft. garage with attached shop and office. Separate guest house. House is in great condition and priced right for your family. **RMLS#15333269 - \$220,000**



**BIG LOT IN A QUIET NEIGHBORHOOD** on a dead end street in the beautiful town of Lostine. Lot behind house is build-able with access coming from College St. **RMLS#16149016 - \$160,000**



**LOT WITH VIEWS OF ENTERPRISE, WALLOWA VALLEY AND THE WALLOWA MOUNTAINS.** City sewer, water and underground power and phone is available. A great place for your dream home! **RMLS#16277577 - \$45,000**



**PERFECT LOCATION FOR YOUR NEW HOME.** 5.72 acres with Bear Creek frontage, water rights and view of the mountains. **RMLS#15622959 - \$140,000**

## WALLOWAMOUNTAINPROPERTIES.COM