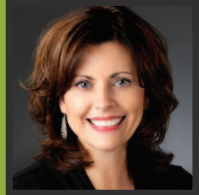


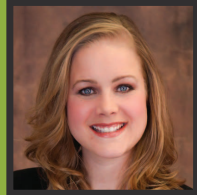
LOCAL HOME LENDING

It's our pleasure to help Eastern Oregon residents buy, refinance or build their home, and we're ready to help you.



Elaine Anderson
Sales Manager
NMLS 487577
CALL 541-278-8380
CELL 541-215-3836

elaineanderson@umpquabank.com
umpquabank.com/eanderson
Pendleton



Katie Johnson
Home Loan Officer
NMLS 523220
CALL 541-567-0322
CELL 541-215-9052

katiejohnson@umpquabank.com
umpquabank.com/kjohnson
Hermiston



Mollie Hulse
Home Loan Officer
NMLS 1159163
CALL 541-605-6216
CELL 541-212-3884

molliehulse@umpquabank.com
umpquabank.com/mhulse
La Grande

Call us today!

Loan products subject to credit approval.

umpquabank.com Member FDIC Equal Housing Lender NMLS #401867 HLD1602.611

COLDWELL BANKER

WHITNEY AND ASSOCIATES

37 SE Dorion, Pendleton, OR 97801 • 541-276-0021 • Fax 541-276-6749

LOTS & ACREAGE

\$4,424,036
PREMIER-Commercial lots available. Directly across Hwy 395 from the new hospital. SW 37th Extension is complete and the access road to the north side of these lots is also completed with SW 32nd Place. All utilities installed. Lots are ready to develop or build to your needs. Prime location for commercial and business development. Take advantage of the increased traffic flow and ease of access. Lots available from 6.73 acres @ \$10.50 s.f., 4.27 acres @ \$12.50 s.f., .75 acres @ \$12.50 s.f., .45 acres @ \$12.50 s.f. with a total of 9.2 acres available. All can be adjusted to suit your needs. **Kevin Hale 541-969-8243cell. #11336593**

\$350,000
HERMISTON
6.29 ACRES OF GROUND ZONED RSC, (Retail Service Commercial), between Kirk Road and Hwy 395. Includes a 1280 sqft home, 2 bed, 1 bath. Huge potential for a business location with excellent access. Ideal for storage units, RV park, retail lot or other commercial business. Owner willing to carry contract with 35% down and good credit. **Jerry Baker 541-969-6378cell. #16251826**

\$295,000
NEW SOUTHGATE COMMERCIAL LOT. Be located in this premier traffic and business area. This vacant lot is adjacent to the Pediatric Clinic and offers full utilities at the curb and a ready to build site. Where else can you have access to thousands of potential clients walk and drive by every year? Please call **Kevin Hale 541-969-8243cell** to find out if this is the right location for your business. **#16559795**

\$250,000
150.64 acres 3 miles from town on Theatre Road. Zoned A-21. Call **Carl Volger 541-377-5058cell** or **Scott Coe 541-980-2262cell** for more information on this property. **#16584762**

\$235,000
REDUCED/ECHO
STUNNING ECHO 246 (ml) acres parcel. Great building site with unbelievable views overlooking the Umatilla River and wide open country for miles. Very private, power/phone near home site, full of wildlife and far from the hustle and bustle. Upstream from Echo. Or one of Oregon's newest wine towns. About even distance commute to Hermiston / Pendleton. Very rare, one of a kind for this market. **Jef Farley 541-276-0021. #16282916**

\$230,000
17.1 ACRES on Hwy 395 South of Pendleton. This acreage has 5.7 acres of water rights and can be divided into two parcels. Located just to the west of the Hwy 395 bridge over McKay Creek, below McKay Dam, this offering is close to town and has direct access to Hwy 395. Seller will have some setbacks / building restrictions for the north property line. **Kevin Hale 541-969-8243cell #15607806**

\$215,000
11.24 ACRES
11.24 acres right outside of town. Two tax lots, each are buildable. Beautiful location overlooking the Umatilla River and West Pendleton. Please call **Kevin Hale, 541-969-8243cell** to learn more. **#15179099**

\$99,900
RARE RESIDENTIAL LOT. 9.71 acres overlooking the Umatilla River, downtown Pendleton, and the Blue Mountains. Conveniently close to town yet offers country like feel. Access on private road, utilities are nearby. This lot will make you think about building a new home. Zoned R2. Price to sell, **Jef Farley 541-276-0021. 19112258**

\$89,000
3 tax lots across from old hospital. North lot is currently paved parking lot. South lot removed building, address is 511 SE 17th. Zoned Service Commercial (C3), allows for many options, check with City. Great opportunity for multi-family, office, etc. Medical facility will be a restricted use. 3 phase power and assessment for state Hwy on North edge. **Jef Farley 541-276-0021. #16114613**

\$75,500
REDUCED/ACREAGE
BEAUTIFUL MOUNTAIN PROPERTY only minutes away from Pendleton. 7.32 Acres along Old Emigrant Road. Great views and very private. Buildable upon securing a conditional use permit from Tribal Planning. Zoned G-1. Call **Jerry Baker 541-969-6378cell. #16042939**

\$75,000
GREAT VIEW LOT! Unobstructed view of Pendleton and the Blue Mountains. This lot is a must see if you are planning on building a new home. Don't wait! **Kevin Hale 541-969-8243cell. #15332998**

\$65,000
COVE
COVE/LOOKING for a great location to build your new dream home? This 2.51 acre lot has lots of potential with beautiful views of the mountains and the valley below. Enjoy the amenities of the beautiful town of Cove. **Carolyn Rovier 541-756-0822cell. #16385741**

\$65,000
BUILDING LOT- NOW AVAILABLE. Great location, utilities at the street/curb. Check this lot out if you are looking to build. **Kevin Hale 541-969-8243cell. #15068065**

\$65,000
ROYAL RIDGE AREA. Large oversized lot ready to build. Desirable corner lot with all utilities and ready to build NOW. Please call **Kevin Hale 541-969-8243. #15294144**

\$45,500
REDUCED/SUNRIDGE
BUILD YOUR DREAM HOME HERE, close to all Pendleton amenities. Stick built homes only, see CCR's. Level vacant lot with mountain views on edge of Urban Growth Development boundary line. Seller had this flag lot leveled and placed some rock in driveway. 2 Apple trees planted. Recorded shared access on driveway into flag lot, see plat map. **Marsha Morgan 541-377-5152cell. #16276937**

\$45,000
GREAT VIEWS/1.49 ACRES ON 2 CITY TAX LOTS. Zoned for stick built or manufactured home. City sewer and water to property. Call **Carl Volger 541-377-5058 cell** for more information. **#13575330**

\$45,000
A GREAT FIND in city for your new home, manufactured or stick. Check with City for details to develop. 1.5 acres next to East end of River Walk Way. Level parcel with utilities near. Call **Vicki Dick 541-969-9441cell** for more information. **#16088762**

\$32,900
PHASE 3, OVERLOOK TERRACE. Large range of prices and lot sizes, several with views. Zoned for manufactured homes. **Marsha Morgan 541-377-5152 cell.**

\$32,500
PILOT ROCK/1.14 ACRES
GREAT VIEW LOT perched on the hill in a nice location in Pilot Rock on 1.14 acres with the potential of dividing/developing. Sewer is available at the bottom of lot. Perfect for building your dream home with the potential of partitioning up to 3 additional lots to offset costs. **Jef Farley 541-276-0021. #16497070.**

\$32,000
BLUE MTN. HEIGHTS-Buildable lot ready for you to start your new home. Water and sewer at the street. Very affordable at \$32,000. Call **Kevin Hale 541-969-8243 cell** to learn more. **#10055700**

\$32,000
ROYAL RIDGE LOT. Top quality homes in this area help to maintain the value of your home. Owner has topo map for the buyer to site their home on the lot. Unobstructed views of the Blue Mountains. This is a wonderful lot to build on. **Kevin Hale 541-969-8243cell. #16328653**

\$30,000
1.58 ACRES ON WESTGATE. Accessible from Marietta Road. Private location with secure access. This lots is priced to sell. Please call **Kevin Hale 541-969-8243cell** to learn more. **#15427674**

\$29,500
BUILDABLE LOT IN RICE ADDITION. Large oversized lot, graded for a daylight basement. If you are ready to build, be sure to check this lot out! Call **Kevin Hale 541-969-8243cell** for more information. **#15120074**

\$20,000
Buildable lot on SE 10th. Attractive location on the flats, services at the street. Priced to sell. Please call **Kevin Hale @541-969-8243** to learn more. **#16685017**

\$19,900 PENDING
INVESTMENT PROPERTY OPPORTUNITY on the lower North Hill! This flat, vacant lot is ready and waiting for your multi-family dwelling to become a reality. **Molly Webb 541-969-4188cell. #16074263**

\$19,900 PENDING
PRICED TO SELL! This vacant lot in a desirable area and close to utilities could be the perfect place for your multi-family dwelling. Don't miss this great income opportunity on the lower North Hill! **Molly Webb 541-969-4188cell. #1609984**

\$18,500
REDUCED/ATHENA
BUILDABLE ATHENA LOT. 1.5 acre between 1st and 2nd from Washington St. Call **Jerry Baker 541-969-6378cell** for more information. **#16319384**

\$9,500
REDUCED/HEPPNER LOT
GREAT LOT FOR YOUR NEW HOME. Old manufactured structure was removed by fire department controlled burn. Upper area is flat with native soil. Lower area has some fill for your garden. Take advantage of the City views. **Dawn Blalock 541-210-9563cell** or **Carl Volger 541-377-5058cell. #16522636**

WARM UP WITH A CUP OF JOE IN YOUR NEW HOME

BED's Mortgage Division

CONSTRUCTION & HOBBY FARM LOANS



Arletta Arnsperger
NMLS# 508276
Mortgage Loan Officer

Bank of Eastern Oregon

Member FDIC 877.472.6217 • BEOBANK.COM NMLS# 414459



WHEELER COUNTY, FOSSIL/KINZUA, OR
39,670 deeded acres with adjacent USFS grazing allotment. One contiguous tract. Timber, numerous water sources, recreation paradise.

\$28,000,000 #RG02815

The Whitney Land Co. 101 S.E. 3RD • P.O. Box 1614
PENDLETON, OR 97801
E-Mail: farms@whitneylandcompany.com