

DP GENERAL CONSTRUCTION



Damion Patton
CCB 130362

** All phases
of new
construction
and remodels*

**50562 Cayuse Rd.
Pendleton, OR. 97801**
dppatton1@hotmail.com

(541) 969 - 9984



"Can't Find The Perfect Home???"
Build exactly what you want at Sunridge Estates



SUNRIDGE ESTATES CUSTOM BUILT

3 bed, 2 bath home on two view lots. Living and family rooms, dining and breakfast nook. Fireplace, two offices, lots of storage. Finished shop is 30x40, two stories with 2 baths rec room, guest quarters. Too many amenities to list!!
\$375,000. Broker owned.

Visit our Website: www.sunridgeestates.com



SHELLY ZECKMAN
Principal Broker, GRI
541-379-4382
shelly@wtechlink.us
www.sunridgeestates.com



Clark Jennings & Associates
Real Estate Services

614 SE Court Ave. • Pendleton, OR 97801
(541) 278-9275 • FAX (541) 278-9279



www.easternoregonranches.com



Broker Owned



The Buckin Roll Ranch

517.31 acres located on Big Butter Creek. Pivots & wheel lines cover the 82 acres of irrigated fields. Beautiful home, arena, horse barn, shop and hay barns. Deer and upland birds are abundant. Big Butter Creek flows through the property. A rare Butter Creek ranch property. **\$1,595,000**



The Whitney Land Co.



101 S.E. 3RD • P.O. Box 1614
PENDLETON, OR 97801

E-Mail: farms@whitneylandcompany.com

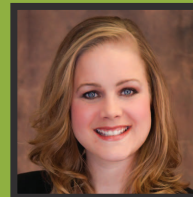
LOCAL HOME LENDING

It's our pleasure to help Eastern Oregon residents buy, refinance or build their home, and we're ready to help you.



Elaine Anderson
Sales Manager
NMLS 487577
CALL 541-278-8380
CELL 541-215-3836

elaineanderson@umpquabank.com
umpquabank.com/eanderson
Pendleton



Katie Johnson
Home Loan Officer
NMLS 523220
CALL 541-567-0322
CELL 541-215-9052

katiejohnson@umpquabank.com
umpquabank.com/kjohnson
Hermiston



Mollie Hulse
Home Loan Officer
NMLS 1159163
CALL 541-605-6216
CELL 541-212-3884

molliehulse@umpquabank.com
umpquabank.com/mhulse
La Grande

Call us today!

Loan products subject to credit approval.

umpquabank.com Member FDIC Equal Housing Lender NMLS #401867_HLD1602.611