



**Sandi Bunyard**  
Principal Broker  
541-571-1221



**Alaina Siler**  
Broker  
541-701-1559



**Brenda Knight**  
Broker  
541-720-1507



**Heidi Carver**  
Broker  
541-701-1376



**Courtney Talbot**  
Broker  
541-571-0058



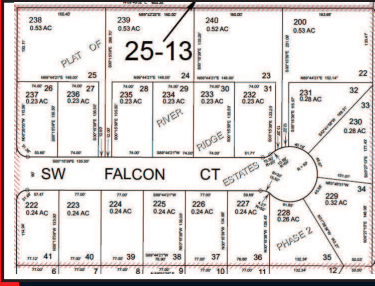
**Jessica Rosas**  
Broker  
541-701-6163



**Maggie Coleman,**  
Broker  
541-314-8609



**4.54 ACRES BARE LAND IN IRRIGON** ready for development. Zoned R2 residential. May be sold with MLS# 14511892 and MLS# 14355248. MLS# 14267289 **\$35,000**



**Build your home in River Ridge Estates!** Nice location on cul-de-sac. On city services. Bring your builder and build your home! 12 lots ranging from .23 acres to .32 for **\$30,000 each** and 4 half acre lots for **\$45,000 each.**



**This home features a small fruit orchard** to go along with the 1.58 acres. Several out buildings for the project minded person. Chicken coop and mature trees on this property. Inside you will find a very well kept home with some extra space that has been added off the back side of the home. RMLS# 16044306 **\$79,900**



**4.13 ACRES BARE LAND IN IRRIGON** in the city which are ideal for development into new residential lots. Zoned R2 residential. May be sold with MLS# 14511892 and MLS# 14267289. MLS# 14355248 **\$35,000**



**ONE ACRE OF VACANT LAND** just west of Boardman City Center. Near senior center, medical office, grocery store. Front footage on Kinkade. Great central location! Check with city for approved uses. MLS# 15662596 **\$139,000**



**NICE VIEW LOT OVERLOOKING THE UMATILLA RIVER.** 0.32 of an acre with all utilities at the street. MLS# 16351199 **\$19,000**



**4.13 ACRES BARE LAND IN IRRIGON** in the city which are ideal for development into new residential lots. Zoned R2 residential. May be sold with MLS# 14355248 and MLS# 14267289. MLS# 14511892 **\$35,000**



**VERY NICE 2 ACRE PARCEL WITH WATER RIGHTS** on attractive lane in Boardman! Currently in Pasture. Beautiful site for a new home! RMLS# 16213182 **\$65,000**



**COMMERCIAL LOT AT BOARDMAN CITY CENTER!** .63 acres with approximately 128ft of front footage. This is a professional location with City Hall, Bank, Medical and County offices existing and multiple possible uses for your planned business! RMLS# 16284686 **\$72,000**



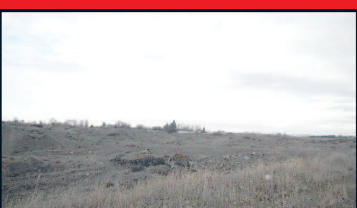
**FLAT 1 ACRE PARCEL CORNER LOT** near Columbia River on access route to beach with River view. Build your custom home near the river! This area along the River is rare and when it's gone it's gone. If you have looked for a country setting with quick beach access to build your home, this could be your spot! **\$49,000** MLS# 14245837



**2.19 ACRES OF LAND** adjacent to Boardman City Hall and Senior Center. Flag lot behind lot 402 and could be purchased together. Excellent location near bank, grocery store, medical. Check with City for approved uses. MLS# 15582243 **\$149,900**



**GREAT FRONTAGE LOCATION** for a retail business in Stanfield. Possibilities are endless. RMLS# 16680952 **\$109,000**



**21.55 ACRES BARE GROUND IN THE CITY OF IRRIGON** ready for development. Zoned for residential development. MLS# 14352202 **\$129,000**



**NICE VIEW LOT OVERLOOKING THE UMATILLA RIVER.** 0.27 of an acre with all utilities at the street. MLS# 16668182 **\$19,000**



**HUGE LOT WITH VERY CLEAN WELL MAINTAINED** home with living room, family room and dining room. Brand new carpet, new paint inside and out. 864 sq ft detached garage/shop, RV parking with power, garden shed with garage door for easy lawn mower storage. Large covered patio perfect for entertaining or just relaxing! Beautiful landscaped backyard. This house has it all and will not last long! MLS# 16679665 **\$190,000**