



# AgriLands Real Estate

Jack Horton - Broker  
Cell: 208-830-9210  
73723 Telocaset Lane,  
Baker City, OR. 97814

Rae H. Anderson - Broker  
Cell: 208-761-9553  
www.agrilandsrealestate.com

**COTTONWOOD CREEK RANCH** - approx. 4,100 deeded acres - 470 irrigated - 1,935 AUM's BLM - sporting two man made reservoirs for fishing - almost drought proof irrigation water guarantees adequate hay production - high end improvements - elk, deer, antelope, turkey and upland game birds - **\$5,285,000**

## NANCE-RHEA CREEK RANCH

Heppner, Oregon - Morrow County: 785 acre ranch with approximately 1/2 miles of Rhea Creek - Sr Creek water rights for approximately 33 acres - gravity flood and sprinkle irrigated. 113 acres in CRP generating annual income. The balance of the deeded land is productive native range. Elevations range from 1,952' to 2,580'. Attractive home, barn, calving shed, corrals, and small feed lot. Mule deer, pheasant, chukar, & quail. Great opportunity to purchase a well maintained ranch on Rhea Creek: **\$665,000**



## Missouri Gulch Dryland Wheat/CRP Farm

Pendleton, Oregon – 394.73 total acres of which 172 acres are enrolled in CRP through 2022 with balance of acres in production. The farm is located in the Missouri Gulch area, Northwest of Pendleton. Clean farm. Production records available. **\$493,000** #02914

**The Whitney Land Co.**

101 S.E. 3RD • P.O. Box 1614  
PENDLETON, OR 97801

E-Mail: farms@whitneylandcompany.com

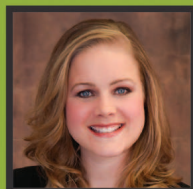
## LOCAL HOME LENDING

It's our pleasure to help Eastern Oregon residents buy, refinance or build their home, and we're ready to help you.



**Elaine Anderson**  
Sales Manager  
NMLS 487577  
CALL 541-278-8380  
CELL 541-215-3836

elaineanderson@umpquabank.com  
umpquabank.com/eanderson  
Pendleton



**Katie Johnson**  
Home Loan Officer  
NMLS 523220  
CALL 541-567-0322  
CELL 541-215-9052

katiejohnson@umpquabank.com  
umpquabank.com/kjohnson  
Hermiston




**Mollie Hulse**  
Home Loan Officer  
NMLS 1159163  
CALL 541-605-6216  
CELL 541-212-3884

molliehulse@umpquabank.com  
umpquabank.com/mhulse  
La Grande

**Call us today!**

Loan products subject to credit approval.

umpquabank.com Member FDIC Equal Housing Lender  NMLS #401867\_HLD1602.611



541-894-0116

FAX 541-894-0119

110 S. Mill St., Sumpter,  
OR 97877 • P.O. 370

**SANDRA L. CHASE,**  
Principal Broker  
sandra@rusticrealtyproperties.com



**PRIVATE COUNTRY LIVING AT ITS BEST**  
2 Story approx. 2240 sq. ft. Custom Home w/1336 sq. ft. Basement/ 2 Car Garage. 4 Bedrooms, 2 full Baths and 1 half Bath. Cathedral Ceilings, Wood floors. Heat pump and Pellet Stove. Wrap around 1800 sq. ft. +/- Porch with views. RV Parking with full hook ups. Approx. 4.77 acres. H-2266 **\$369,500.**



**BEAUTIFUL CUSTOM HOME ON LARGE LOT**  
2248 sq. ft. +/-, 1 Bedroom, 2 Bath. Bonus/Bedroom upstairs Loft. LOT SIZE: 150X160 +/-, Large 38X42' +/- Shop/Garage. 40X60' +/- RV Pad with full hook ups. Ask listing agent for list of top of line appliances and Extras. H-2278 **\$374,500.**



**CUSTOM LOG HOME**  
2 level, 2 Bed, 2 Bath. Approx. 2000 sf Vaulted Ceiling, some Hardwood flooring. Deck, covered Porch and Patio. Trees and View. Large detached Garage/Shop with approx. 10ft. covered wings on each side. Approx. 24'X24' Storage/Barn building. Fenced and cross fenced. H-2273 **\$379,000.**



**GREAT VIEWS FROM THIS BEAUTIFUL PROPERTY.**  
Approx. 2106 sq. ft. Home. 3 Bed, 2 Bath. Bonus Sun Room. Large Kitchen/Living area with Cathedral ceiling. Large approx. 24'X 32' Shop/Garage with finished upstairs. Landscaped. **\$245,000.** H-2267

Summer Office Hours: Monday through Saturday 11 am - 4 pm  
Call for Appointments 541-894-0116  
Check out all of our listings at: [www.rusticrealtyproperties.com](http://www.rusticrealtyproperties.com)

**WWW.RUSTICREALTYPROPERTIES.COM**