

AGRICULTURE TODAY

UDDERLY ORGANIC

Hermiston dairy grows to meet demand for organic milk.

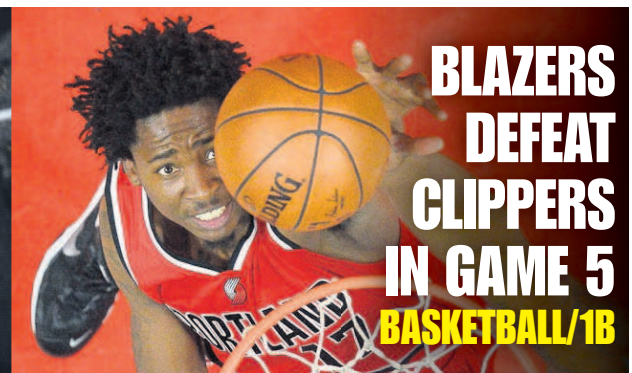
DROUGHT KILLER

Pendleton aquifer recharge project shows potential for farmers.

PAGES 8-11A

A line of Holstein dairy cows eat in the feed barn on Tuesday at the Cold Springs Dairy east of Hermiston.

Staff photo by E.J. Harris



BLAZERS DEFEAT CLIPPERS IN GAME 5
BASKETBALL/1B



KENNEWICK MAN TO RETURN TO TRIBES
REGION/3A

EAST OREGONIAN

THURSDAY, APRIL 28, 2016

140th Year, No. 139

WINNER OF THE 2015 ONPA GENERAL EXCELLENCE AWARD

One dollar

Wildfire season expected to be less severe

By DAN ELLIOTT
Associated Press

DENVER — The upcoming wildfire season across the U.S. isn't expected to be as bad as last year's infernos, when a record 15,800 square miles burned, the nation's top wildland firefighting official said Wednesday.

But parts of the nation should expect a rough season after a warm, dry winter or because of long-term drought, U.S. Forest Service Chief Tom Tidwell said.

Southern California, other parts of the Southwest, Alaska and Montana are all vulnerable, he said.

"So where we anticipate the severity of the fire season will not be at the same level as last year, we still expect to have some areas that will be really active," Tidwell said.

Tidwell discussed the fire outlook with The Associated Press four days before the federal government issues its wildfire outlook for the summer season. He was in Denver for a conference on forest health.

California is vulnerable because much of the state remains in a drought,

See WILDFIRE/12A

"So where we anticipate the severity of the fire season will not be at the same level as last year, we still expect to have some areas that will be really active."

— Tom Tidwell, forest service chief



Staff photo by E.J. Harris

Riverside sophomore Andruw Sorensen and Irrigon sophomore Josh Myers assemble a computer tower during the STEP Tech Expo on Wednesday in Pendleton.

Getting a STEP up

IMESD hosts tech expo for students

By ANTONIO SIERRA
East Oregonian

Career technical education has become a buzzword in teaching circles, as local districts expand their focus outside academics to include vocational training and professional skill development.

Continuing with that trend, the InterMountain Education Service District hosted its first STEP Tech Expo at the Pendleton Convention Center Wednesday, inviting 125 high school students from across Eastern Oregon to get hands-on experience with local professionals.

STEP stands for Student Technology Expanded Programs and is one CTE-focused project covered by a \$198,000 state grant.

In a convention center conference room, IMESD staff instructed students to take apart and reassemble a computer before quizzing them on common error messages.

That exercise was one of several sessions around the convention center. Other students were studying computer hardware, there was a session

See EXPO/12A



Staff photo by E.J. Harris

Dell account executive Pleschette Fontenet takes a selfie with a group of high school students during the STEP Tech Expo on Wednesday in Pendleton.

Walla Walla dog show finds home in Pendleton

By KATHY ANEY
East Oregonian

The Pendleton Convention Center has gone to the dogs. Or is about to.

Hundreds of canines will strut their stuff at the Walla Walla Kennel Club Dog Show this weekend. Though this is a new event for Pendleton, this competition will be the club's 100th dog show since 1934.

"This is a significant show for us," said Jan Robles, the club's obedience chair.

Robles said club members got frustrated with their last venue, the Walla Walla County Fair-

grounds. Conditions outside were rough enough to require orange cones strategically placed next to possible hazards. Inside "fuses blew all the time." Then one of the members ran into Pendleton Convention Center Manager Pat Kennedy who asked: "Would you be interested in coming to Pendleton?"

They were and Kennedy couldn't be more over the moon.

"Ever since I took this job, I've been trying to get a major league dog show here," Kennedy said.

Kennedy shows dogs himself, though not in American Kennel

See DOGS/12A



Staff photo by E.J. Harris

Pendleton Convention Center manager Pat Kennedy poses with his two Shiloh shepherds, V and Sebastian, outside of the Pendleton Convention Center. Kennedy helped to bring this weekend's AKC Dog Show to Pendleton.



7 29467 10001 5