

## CELEBRATE EARTH DAY! MAKE A FOOD CHAIN

Not a chain made out of food! Food chains describe which plants or animals eat or are eaten by other animals.

Below is a food chain you can make to learn how sea plants and animals need the creatures lower on the food chain in order to survive.

1. Cut out each strip of the "chain."

2. Make a loop with strip A, **plant plankton**. Join the ends with tape, staples or glue.

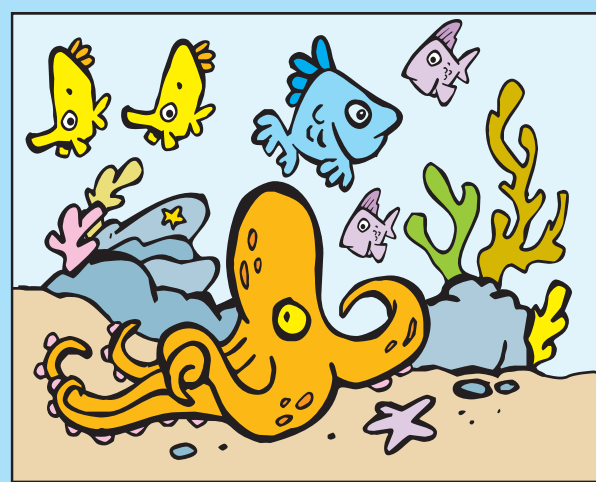
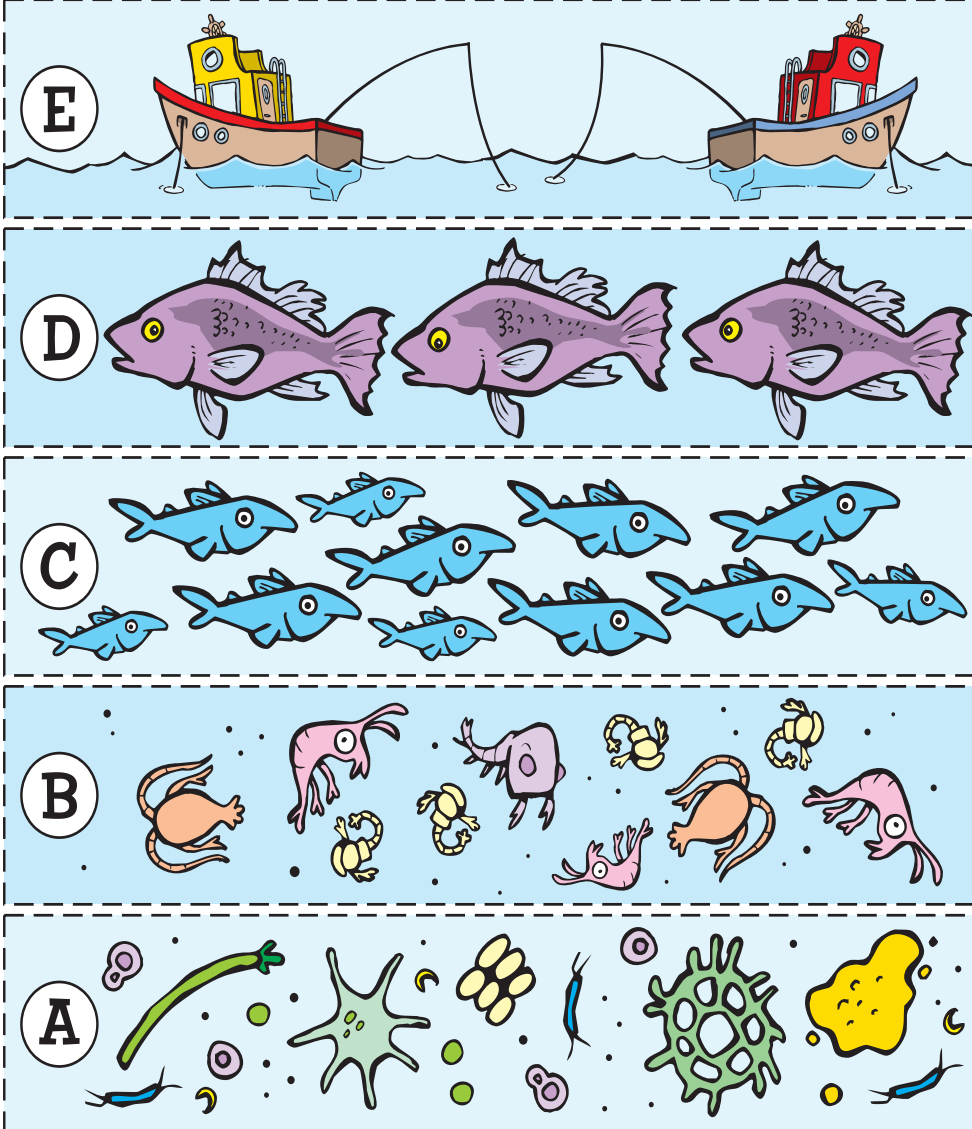
3. Thread strip B, **animal plankton** through strip A. Join the ends of strip B to make a second loop in the chain.

This shows that tiny animal plankton need plant plankton in order to live.

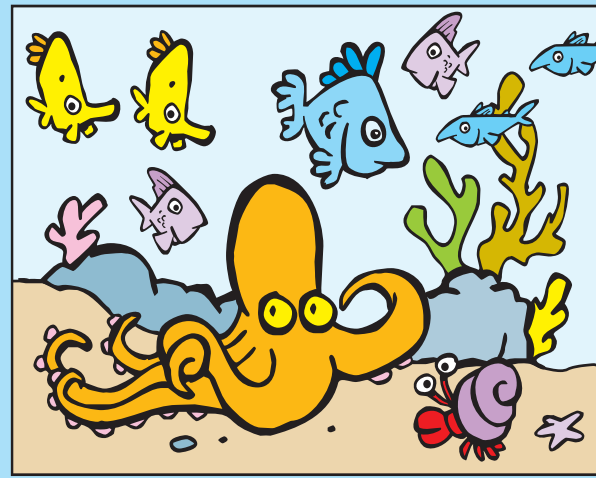
4. Thread strip C through strip B. This shows that **small sea animals** eat plankton. Join the ends to make a loop.

5. Thread strip D through strip C. This shows that **large sea animals** eat smaller sea animals.

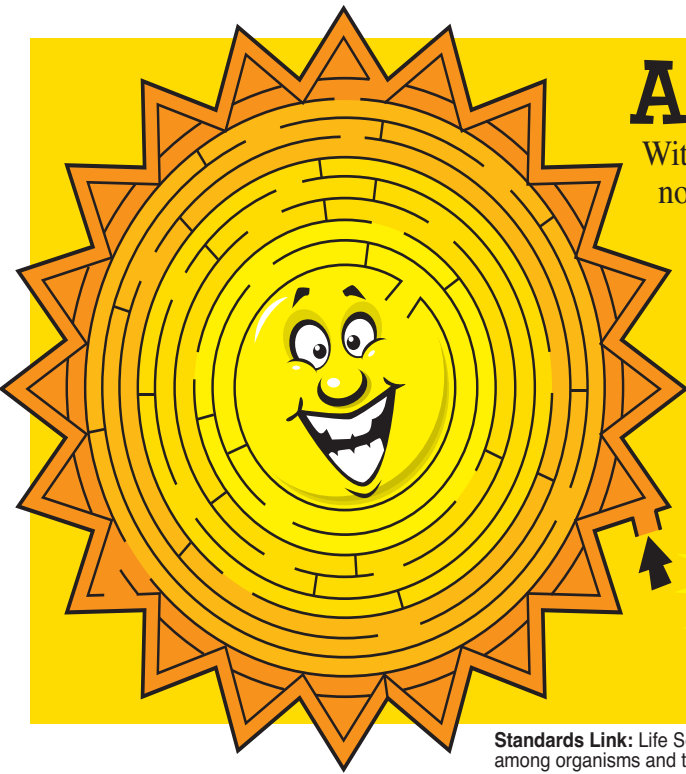
6. Thread strip E through strip D. This shows that **people** eat larger fish such as bass, halibut and salmon.



See the Differences in the Sea? Look at the two undersea pictures. Can you find 10 or more differences?



Standards Link: Investigation: Find similarities and differences in common objects.



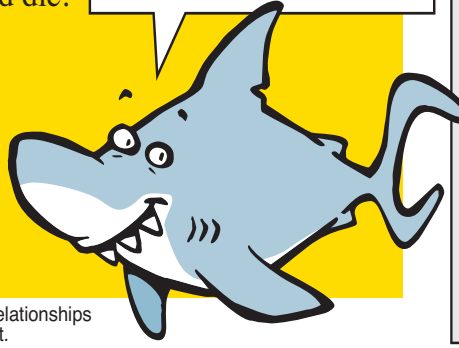
## A-Maze-ing Sun

Without the sun, most ocean animals would not exist.

Plant plankton need the sunshine to make their food. Without the sun, all plant plankton would die.

Find your way to the center of the sun maze.

Look at the food chain. What would happen to all of the other animals in the food chain if plant plankton disappeared?



Standards Link: Life Science: Understand the relationships among organisms and their physical environment.

Extra! Extra!

## See, Sea and C

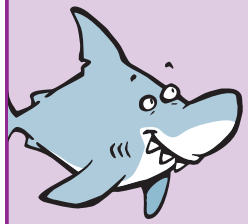
**Homonyms** are words that sound the same but are spelled differently and have different meanings. Go on a fishing trip through today's newspaper. How many homonyms can you hook?

Standards Link: Vocabulary: Understand level-appropriate reading vocabulary.

## Kid Scoop Puzzler

Help Sharkey find the puzzle pieces to complete each equation.

	+		+	1	=	13
6	+		+		=	
	+		+		=	12



11	0	7	8
3	2	5	4

Standards Link: Number Sense: Solve problems involving numeric equations.

## Double Double Word Search

PLANKTON  
OCEAN  
CHAINS  
SURVIVE  
SHARKEY  
HOMONYMS  
SALMON  
PLANT  
SECOND  
BASS  
HAPPEN  
EXIST  
THREAD  
LOOP  
SUN

Find the words in the puzzle, then in this week's Kid Scoop stories and activities.

Y N O S U N C P K T  
C E P O O L T L N P  
E P K M S N I A H C  
X P L R A V E N A D  
I A M L A C B K S A  
S H P X O H A T X E  
T D N O C E S O P R  
E V I V R U S N M H  
Y S M Y N O M O H T

Standards Link: Letter sequencing. Recognized identical words. Skim and scan reading. Recall spelling patterns.

Standards Link: Earth Science: Know that all organisms (including humans) cause changes in their environment, and these changes can be beneficial or detrimental; Know ways in which humans can alter the equilibrium of ecosystems.

## Kid Scoop VOCABULARY BUILDERS

This week's word: **PLANKTON**

The noun **plankton** means a mixture of tiny plants and animals floating in fresh or salt water.

Some sea life live on nutrients found in **plankton**.

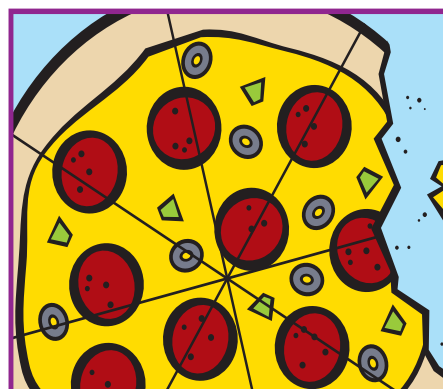
Try to use the word **plankton** in a sentence today when talking with your friends and family members.

## FROM THE Kid Scoop LESSON LIBRARY

### Who eats what?

Clip a newspaper picture of an animal. (It can be a human being.) Then clip a picture of something that the animal eats. Then clip a picture of something that the animal's food eats. Keep going as long as you can.

Standards Link: Life Science: Understand relationships between organisms and their physical environment.



## How do you fix a broken pizza?

ANSWER: With tomato paste.

## Write On!

### I'm Green

Explain what you do to help the environment. Why is it important to you?