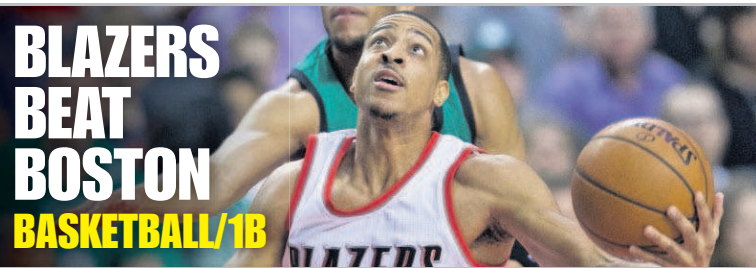




INMATES RESTORE BICYCLES
REGION/3A



BLAZERS BEAT BOSTON
BASKETBALL/1B



STEVE MYREN RETIRES
REGION/3A

EAST OREGONIAN

FRIDAY, APRIL 1, 2016

140th Year, No. 120

WINNER OF THE 2015 ONPA GENERAL EXCELLENCE AWARD

One dollar

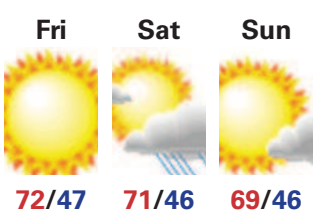
Your Weekend



- Family fishing event at McNary Channel Ponds
- Youngman fun run/walk fundraiser, Saturday
- Umatilla County Trivia Games in Pendleton

For times and places see Coming Events, 6A

Weekend Weather



March Madness Final 4

Villanova	Oklahoma

• Saturday, 3:09 p.m. (TBS)

North Carolina	Syracuse

• Saturday, 5:49 p.m. (TBS)

Oregon universities request \$100 million more from state

PORTLAND (AP) — Oregon's public universities are asking for \$100 million more from the state than they have received in the past.

The *Oregonian* reports that the total request for \$765 million for general operations during the 2017-19 biennium is in a continued effort to dig the seven institutions out of problems caused by two decades of reduced state funding.

Last summer, lawmakers approved \$665 million in general support for the universities, a 27 percent increase over the 2013-15 biennium.

The request comes more than a year before the Legislature will consider the 2017-19 budget.

University officials say the \$100 million increase would help keep tuition increases under 5 percent each year.

The Higher Education Coordinating Commission will discuss the budget request at an April 13 meeting.

Four Imnaha wolves killed



This May 2011 photo shows Imnaha pack alpha male OR-4

By ERIC MORTENSON
Capital Bureau

The Oregon Department of Fish & Wildlife shot and killed four Imnaha Pack wolves involved in five confirmed livestock attacks in the past month.

The "lethal take" order, adamantly opposed by a key conservation group, involves a Wallowa County pack with a long history of attacks on cattle and sheep and an equally significant influence on the growth of

other wolf packs in the state.

ODFW wolf coordinator Russ Morgan said the four wolves included an aging alpha male, OR-4, and an alpha female, OR-39, that had limped with a back leg injury for the past couple years. The male was nearly 10 years old, which Morgan said is "very old for a wolf in the wild."

Morgan said it's possible the male's age and the female's disability caused the wolves to turn on livestock instead of deer and elk. Two younger wolves,

possibly yearlings, were believed to be traveling with them. The four appear to have split off from the rest of the Imnaha Pack, which numbered at least eight at the end of 2015.

According to a press release from ODFW, the animals were killed Thursday on private property. ODFW spokeswoman Michelle Dennehy confirmed the wolves were shot from a helicopter.

See WOLVES/8A

More students than space

Hermiston School District copes with growing enrollment

Planning for 2017 bond to finance high school expansion

By JENNIFER COLTON
East Oregonian

The story of Hermiston schools has been one of increasing growth. From a district of 300 students in 1932 to the district's current enrollment of 5,500, Hermiston's student growth has trended upward for almost a century. With that comes a cycle of growing pains.

"Everyone wants to 'solve' the problem, but this is something Hermiston is going to continue to struggle with," Deputy Superintendent Wade Smith said Thursday. "We're always trying to keep up. You can't keep up with the growth. At this growth rate, you'd have to be building a new school every five years."

Overcrowding has been an issue for the Hermiston area since 1908, according to a document written by then Hermiston School District Superintendent Armand Larive in 1952. At multiple times — including 1942, 1952, 1980, 1989 and 1997 — enrollment has increased by more than 150 students in a single year.

In the past 15 years, Hermiston has only seen one year — 2011 — where enrollment did not increase. That year, the Umatilla Chemical Depot closed and the recession hit. The next year, the district again continued its upward trend.

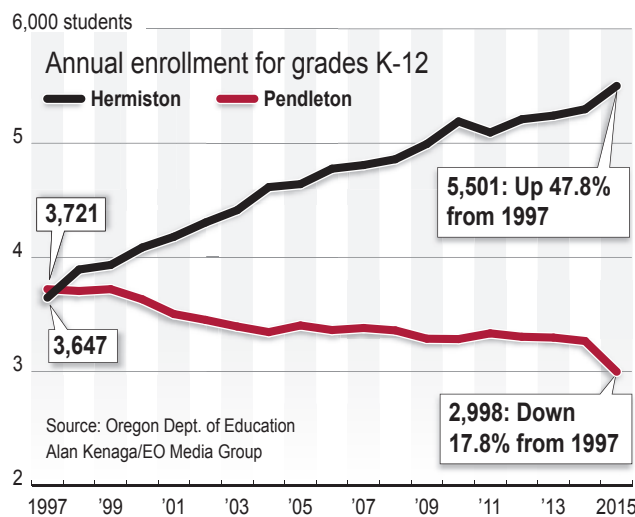
See HERMISTON/8A



Staff photo by E.J. Harris

New modular units are being installed in a section of the parking lot Thursday at Hermiston High School.

Enrollment at Hermiston and Pendleton



Pendleton enrollment continues to decline

By ANTONIO SIERRA
East Oregonian

While Pendleton has experienced some growth since the turn of this century, its youth population has not.

The Pendleton School District enrolls 2,998 students according to the Oregon Department of Education, the first time in 35 years that the district has dipped below 3,000.

The district hit peak

enrollment in 1999 at 3,721 before seeing a steady decline over the next decade and a half.

These aren't raw totals — the department uses a metric called weighted average daily membership to gauge student population. The metric gives greater weight to students under special programs like English language learners

See PENDLETON/8A

UMATILLA

New solar station prepares UEC to grow

Named after employees who died in car crash

By GEORGE PLAVERN
East Oregonian

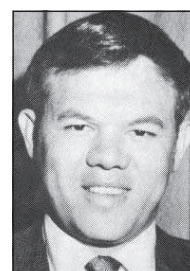


The Umatilla Electric Cooperative now has the largest consumer-owned solar project in the state with their 1.3 megawatt solar array outside of Umatilla.

The sun shined through the clouds Wednesday morning as Umatilla Electric Cooperative showcased its new \$2.5 million solar energy station east of Umatilla.

The system, which came online Feb. 8, features 3,952 solar panels generating 1.3 megawatts of electricity. That's enough juice for 112 all-electric homes, making it the largest consumer-owned solar project in the state.

UEC decided to name the facility after Bill Tolles and LaFawn "Fonnie" Moyer, two former employees who died in a car crash in 1971 while driving back from a data processing orientation in Portland.



Tolles



Moyer

Moyer was 45; Tolles was 28.

Moyer's daughter, Pam Moyer-Martin, began working with UEC in 1975 and has spent more than 40 years with the co-op. She was on hand for Wednesday's gathering at the Moyer-Tolles Solar Station, which is located along Highway 730

See SOLAR/8A



7 294671 10001 5