

# THE WHITNEY LAND CO.

## 541-278-4444



**JIM WHITNEY, CCIM/OWNER/PRINCIPAL BROKER**

• **TODD LONGGOOD, OWNER/BROKER**

• **GARY JELLUM, BROKER • SCOTT COE, BROKER**

• **TRAVIS BLOOMER, BROKER • BLAKE KNOWLES, BROKER**

101 S.E. 3RD • P.O. Box 1614

Pendleton, OR 97801

E-Mail: farms@whitneylandcompany.com



[WWW.WHITNEYLANDCOMPANY.COM](http://WWW.WHITNEYLANDCOMPANY.COM)



## COUNTRY PREFERRED, REALTORS

Formerly Coldwell Banker Preferred Group

331 W. MAIN ST. • JOHN DAY, OR 97845  
(541) 575-2710 • 1-800-575-2710

Amy Denman Owner/ Broker.....503-577-7029  
Al Denman Broker.....503-709-0425  
Fred Winegar, GRI Broker.....541-620-1560  
Sharon Busch Broker.....541-620-1011

CHECK US OUT ONLINE AT [www.eastoregonrealestate.com](http://www.eastoregonrealestate.com)  
Our office and brokers are licensed in Oregon



**BEAUTIFUL HOME WITH SPACIOUS OPEN FLOOR PLAN.** Terrific views from this comfortable one level home. Hard to find 4 bed, 2 bath with large living plus a separate family room with fire place. Nice yard, double garage and car port. Canyon Mt and John Day Valley views. 334 CHAROLAIS HEIGHTS, John Day. Call Amy Denman. \$205,000. RMLS# 16649521



**BEAUTIFUL 2556 SQ. FT. HOME WITH MOUNTAIN VIEWS.** Large private lot close to schools. 4 bedroom, 2.5 bath with hardwood floors and cherry wood cabinets. Master bedroom has walk in closet and master bath has a shower with separate garden tub. Must see to appreciate. 120 W 9th ST., Prairie City. Call Albert Denman. \$210,000. RMLS# 15460744



160 E. Main •  
John Day, OR 97845  
541-575-2121 / 888-575-2121

Jerry Franklin, GRI (ABR)  
SRES Principal Broker/Owner,  
541-820-3721

Wendy Hull, GRI  
Principal Broker, 541-620-4239

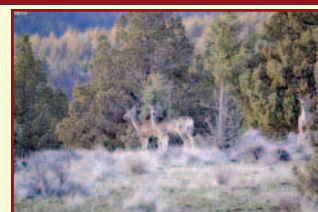
Michal Madden  
Broker, 541-620-4408

Kathy Endicott  
Principal Broker, 541-620-2960

Traci Frazier  
Broker, 541-620-0925

Shanna Langley  
Broker, 541-791-1180

### WE ALSO HAVE VARIOUS COMMERCIAL PROPERTIES AVAILABLE!



#3150R - NEWLY REMODELED! 2 Bedroom 2 Bathroom home. Remodeled kitchen with new appliances. Pergo floors. Cov patio, att garage and carport. Extra large dble lot w/ irrig from Canyon Creek. Rm to bid lrg shop or another home. 125 N. Humbolt, CC \$145,000 RMLS#16514067

#3131RR - APPEALING 1696+ ac MONUMENT cattle/hay ranch. 4 tax lots w/remod 1568 +/- SF. bunkhouse/storage bldg, carport, machine shop, old granary, lg barn w/metal roof, stalls & hay storage, corrals. 69 acs irrig. Fenced/x-fenced rangeland. LOP TAGS. 51338 Hwy 402. \$950,000 RMLS#15115416

#3128R - GREAT HOME FOR PRICE. 2BD/1BA w/daylite basement, nice deck w/views of hills. New lam floors, utility, storage room. Nice metal roof, 2-car carport. 101 Hillcrest, JD. \$84,000 RMLS#15495482

#3117A - NEW PRICE! Remote recreation hunting/get-away property! Enjoy breathtaking mtn & valley views from 160 +/- acs approx 10 mi off Hwy 26 up Wiley Creek. Lots of game, partially fenced. Access difficult in wet weather & limited winter access. LOP tags apply. \$99,000 NOW \$89,900 RMLS#11584142

#3127L - BUILD YOUR DREAM HOME on this 1.66-ac lot. City water & sewer to house pad, system dev fees paid. Elec conduit to prop line. Beautiful setting waits for your home. Very private yet mins to town. 220 Cougar Ridge, CC. \$54,500 RMLS#15450359

#3123R - REDUCED! CHARMING 2 BD 1 BATH COTTAGE just 3 min walk to JD River. Remod w/vinyl siding & windows, metal roof, cov porch/beautiful views, landscaping, gazebo, shed. Appliances incl. 696 Wilson St, Monument. \$64,999 NOW \$77,000 RMLS#15510044

See our listings at: [www.eastoregonrealty.net](http://www.eastoregonrealty.net) • [www.eastoregonrealestate.com](http://www.eastoregonrealestate.com) • [www.farmseller.com](http://www.farmseller.com) • [www.rmls.com](http://www.rmls.com)

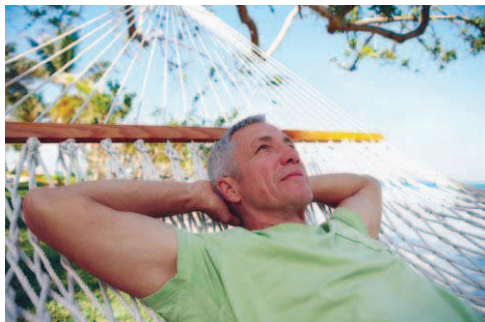
## Miller Plumbing & Supply

202 S. River Street,  
Enterprise, OR

541-426-3151

**New construction • Remodels •**

**Gas piping • Service calls • In-floor heating • Camera diagnostic service • Plumbing fixtures & supplies**



## Whistle while WE work!

**Wallowa County's FULLY licensed, bonded & insured  
one-step plumbing shop**

CCB #140479



## Duke Warner Realty

MEMBERS OF RMLS & MLS  
[www.rmls.com](http://www.rmls.com) and [www.centraloregonrealtors.com](http://www.centraloregonrealtors.com)

Dayville John Day Valley

Lori Hickerson, Principal Broker, GRI, P.C. • Sally Knowles, Broker, GRI

Babette Larson, Broker, GRI, Office Manager

215 South Fork Road • Dayville, OR 97825

(541) 575-2617 • (541) 932-4493 • (541) 987-2363

To view all of our properties go to: [www.eastoregonrealestate.com](http://www.eastoregonrealestate.com)



**SOUTH FORK RANCH!** River frontage, 205 ac, 50 irr, 3/2 LOP tags, office, shop. \$679,000. RMLS #16048241



**560 AC OFF GRID BEAUTY & SECLUSION!** 2/2, barn, shop, creek, LOP tags. \$1,500,000. RMLS #15128485



**67 ACRE RIVER RANCH!** 20 Irri ac, private, 2 story, 3/2, deck, shop, hay storage. \$587,000 RMLS #15066001

**"Your Professional Real Estate Choice in Grant County."**

Please give us a call for additional listing information.

February/March 2016, Volume 31, Number 2 Eastern Oregon Real Estate & Home Builders Guide is published monthly by the East Oregonian Publishing Company, 211 SE Byers, Pendleton, Oregon 97801. Subscription rates are \$16 for 12 issues. Buy one zone, get 2 zones FREE! Third-class postage paid at Pendleton, Oregon. For subscription service questions, call (541) 278-2670 or 1-800-987-7511 or write Eastern Oregon Real Estate & Home Builders Guide, 211 SE Byers, Pendleton, Oregon 97801.



All real estate advertising in this paper is subject to the Federal Fair Housing Act of 1968 which makes it illegal to advertise "any preference, limitation or discrimination based on race, color, religion, sex, handicap, familial status or national origin, or an intention to make any such preference, limitation or discrimination."

This paper will not knowingly accept any advertising for real estate which is in violation of the law. Our readers are hereby informed that all dwellings advertised in this paper are available on an equal opportunity basis.

The information in this paper is deemed to be correct but not guaranteed.

All properties or information contained in this paper are subject to prior change, modification, sale, or withdrawal from the market.

Copyright© 1998 East Oregonian Publishing Company. All rights reserved.