

MALHEUR REALTY

1461 S.W. 4th Avenue • Ontario, Oregon 97914

www.MalheurRealty.com



Licensed in Idaho & Oregon
Independently Owned and Operated.



541-889-5800 • 888-292-5877 Toll Free

Larry Wilson,
Principal Broker/Owner
208-739-8383
Donna Murdock, Broker
208-880-4938
Travis Currey, Broker
541-212-1871

Chad Currey, Broker
541-212-3880
Richard Teramura, Broker
541-212-6886
Jim Maret, Broker
541-709-8239



\$590,000 PRICE REDUCED - RAISE YOUR FAMILY HERE! - This Ontario home has all the room you need for toys and family. It has 40.37 acres in hay and pasture with Owyhee water right. Home has 6 bedrooms, 3 baths & a remodeled kitchen. It offers a central vacuum. Overlook a greenhouse and a pond. Yard has mature pine trees, shade tree's fruit trees. Way too much to list here. MLS 98566065 /98566353 1859-14 Call **Chad**



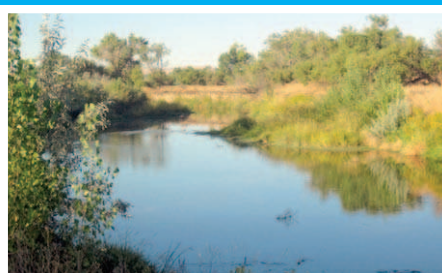
\$549,000 - OUT OF THIS WORLD VIEW! Located between Ontario and Nyssa. Has been updated w/granite counter tops throughout. Jetted tub in bathrooms. Master bath is huge with jetted tub and heated floors. Huge barn with hay loft, tack room, RV storage. Sewer hoopup for RV's. Newer 54 X 36 garage completely finished. Several horse lean-to's with heated water. 27 acre Owyhee water right. Has a pond for wildlife viewing. MLS 98593822 1896-15 Call **Larry**



\$365,000 READY TO GO FARM! This farm has 70 acres with 64.7 acres water right. Irrigate with wheel lines and gated pipe. Lots of room for your family in this 2938 sq. ft. home with 6 bedrooms, 3 bath, carport and outbuildings. It includes with corrals and barn for horses and cows. This has lots of wildlife to be seen. MLS 98554631 1849-14 Call **Chad**



\$299,000.00 - One of The Best Views Around! - Choice building lot in Ontario. One of the best view lots in Malheur County. View of Ontario, Payette, Nyssa, Malheur Butte, Bogus, Vale and lots of beautiful scenery in between. A gravel road is in and approved by county. Seller is willing to negotiate. MLS 98568396 1862-14 Call **Travis**



\$179,000 OUTDOORSMAN'S PARADISE- This 16+/- Acres on the Malheur river nestled underneath the Malheur Butte. 1980ft of river frontage with plenty of wildlife including Deer, Pheasants, Quail, Geese and Turkeys. MLS 98599838 1900-15 Call **Chad**

WALLOWA MOUNTAIN

PROPERTIES, INC.

Real Estate Professionals

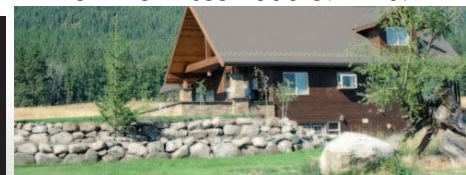
Two Convenient Locations on Highway 82

309 S. River St., Ste D • Enterprise, OR 97828
541-426-3026

203 N. Main St., #5 • Joseph, OR 97846
541-432-7653 • 800-597-7169



PRIVATE SETTING NEAR JOSEPH - Quality custom 4BD, 4BA home built in 2001/2002 on 1966 frame/foundation. Unbelievable views, mountains, creek, pond & valley! Water rights, year-round stream, office, exercise & laundry room. 3 stall horse barn + remodeled insulated barn/shop, fenced/cross fenced. Current use - B&B. RMLS# 15214039 - **\$649,000**



A STRIKING HOME WITH STUNNING VIEWS. 40.65 irrigated acres. This 2,775 sq. ft. custom home has 4 bedrooms and 3.5 baths. Amazing features include 2 rock work patios, marble master shower, media room with projector and screen and Australian Cypress wood floors. The 18' tall stone fireplace is a lovely focal point in the home. RMLS# 14540095 - **\$599,000**



BE YOUR OWN RANCHER on this 80 acres of farm ground. The house has new carpet and vinyl windows. 2 bedroom, 2 bath, with a large family room. Barn, machine shed, outbuildings irrigation rights, creek and pasture ground. View of the valley and mountains behind. Let me show you! RMLS# 11617766 - **\$365,000**



10 VERY PRIVATE TIMBERED ACRES with open pasture areas. Stunning site on Mt Joseph with end of road privacy. Great views of the moraine & mountains. A charming mountain cottage w/floor to ceiling glass, loads of Southern light - 100 yr old heavy timbers accent the home & show it was built to last. 3141 sf, 3+ bedrooms, 1.5 bath home with daylight basement. Cedar shingle exterior. Rare opportunity to get a premiere setting at a great price. RMLS# 15176339 - **\$345,000**



THREE BEDROOM, TWO BATH, MANUFACTURED HOME ON FIVE IRRIGATED ACRES. Seller has put in new flooring, interior doors and bathroom fixtures. Fenced and crossed fenced plus a barn with horse stalls. Excellent soils and mountain views! RMLS# 15248449 - **\$270,000**



GREAT BUY!!! Building was previously used as a medical clinic with potential for numerous uses including possible office suites, apartment conversion or bring your ideas! 5460 m² sq. ft. of main floor, 3840 m² sq. ft. of basement and 700 m² sq. ft. detached garage. Finished apartment in basement, Fireplace in main lobby & multiple bathrooms throughout main floor. Extra lot included for future development. Large Price Reduction to only **\$199,900** -RMLS# 10072026



PEACEFUL AND QUIET NEIGHBORHOOD WITH DELIGHTFUL VIEWS. This beautiful 4 bedroom, 2 bath home has a fenced yard in front and back, with a privacy fence in the backyard and patio. The house has hardwood floors, a bonus room and utility room. RMLS# 15278322 - **\$185,000**



CUTE SMALL CABIN CLOSE TO WALLOWA LAKE. Remodeled with granite counters and many upgrades. Well-designed use of space. Wrap around deck for outdoor space. Spacious surroundings. Close to USFS trail head. Currently a vacation rental with great rental history. Fully furnished. RMLS# 15581969 - **\$132,500**



NEWER DOUBLE WIDE COMPETITIVELY PRICED and in a great neighborhood in Wallowa. Some repairs to interior required. RMLS# 15101957 - **\$104,999**



NICE ONE-LEVEL HOME located on a dead-end street in Enterprise. 1124 sq. ft. with three bedrooms and one bath. Close to K-12 school and downtown. Newer roof and extra insulation. Fenced back yard with concrete pad. Oversized carport. RMLS# 15606041 - **\$99,000**

WALLOWAMOUNTAINPROPERTIES.COM