

BEST BUYS IN EASTERN OREGON



BUCKHORN FARM

Enterprise, Oregon: This exceptional property consists of approx. 1,206 deeded acres in a beautiful setting east of Enterprise, Oregon. The farm is currently producing alfalfa hay & orchard grass hay for the most part. Approx. 609 acres are sprinkle irrigated with strong water rights. It also runs about 80 head of steers for grazing. Modest improvements w/ mangelmt in place. **\$2,700,000**

AGRILANDS REAL ESTATE
BAKER CITY (208) 761-9553



SPACIOUS HOME ON A LARGE LOT ABOVE HILLCREST.

\$179,900 - basement can be used as separate quarters with kitchen. New exterior paint and vinyl windows. Fenced yard with large back patio. 13x14 storage shed. 300 HIGHLAND DR., John Day, OR. Call Amy Denman. RMLS# 14142263

COUNTRY PREFERRED REALTORS
JOHN DAY (541) 575-2710



GUYON SPRINGS 783 ACRES IN DAYVILLE:

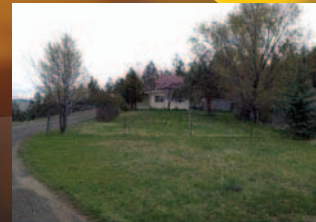
\$485,000 - Recreation for hunting, hiking, riding horses or ATV's in Ochoco Unit. Spring fed pond & stock tank, mountain views. Borders BLM. 2 tax lots with 4 LOP tags. RV included. Perimeter fenced. Private road behind locked gate. TERMS OAC! MOPL#21971

MOSSY OAK PROPERTIES
CUPPER CREEK LAND CO.
KIMBERLY (541) 934-2946



\$59,000
OWNER CARRY. Older home on corner lot.

DENISE CHRISTENSEN
REAL ESTATE BROKER
BURNS (541) 573-3136



MF HOME ON 2.94 ACRES!
Views, 2/2, covered deck, fenced, lots of trees, shop. **\$110,000.** RMLS# 15642712

DUKE WARNER REALTY
DAYVILLE (541) 987-2363



3016R - MOTIVATED SELLER!
2ND PRICE REDUCTION on approx. 1528 SF comfortable 3BD, 1-3/4 BA. Open liv area, lg deck overlooks Canyon Cr. Appls stay. 2-car gar. Approx. 0.56 acs. RV prkg & dump. Storage shed. Paid \$165,000 in 2007. Asking **\$136,500** RMLS#14685160

EASTERN OREGON REALTY
JOHN DAY (541) 575-2121



\$400,000 - A TRAIL CAMERA PICTURE SHOWS THE ELK HEARD ON THIS PROPERTY.

You can actually see them all winter long on the hillside above Perry. 10 miles west of La Grande on the south face of Mt. Emily. 412.7 total acres. Critical wildlife winter range. Robb Road is year around accessible. Springs. Unique! #RMLS 15247824

GARTON & ASSOCIATES
PENDLETON (541) 276-0931



CENTER STREET HOME:

Maintained and comfortable home in Halfway on approx. 5964 sq. ft. lot. Remodeled 4 bed, 2 bath home with hardwood floors, propane furnace, wood stove, updated electrical, plumbing, vinyl windows, utility room, front porch and hardiplank siding. Garden area, yard, wood shed and storage shed. **\$129,000** RMLS# 15092092

HELL'S CANYON REALTY
RICHLAND (541) 540-6133



MILL CREEK LANE

Nearly 2000 sq. ft. of living space, a double garage, and a triple carport, all under one roof. Two bedroom home also has a loft with sitting room. Vaulted ceilings. Several quality outbuildings. Located on nearly 5 acres with trees and views of valley and mtns. **\$380,000**

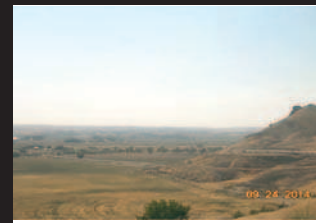
HOWARD BRITTON REALTY, INC.
BAKER CITY (541) 523-2800



WILLOW CREEK RANCH - BAKER COUNTY

Approx. 240 acres situated at the base of the Elkhorn Range of the Blue Mtns, mature timber, open meadows, irrigated pasture, live creek, large pond, orchard, completely renovated home, barn/shop and more. ~~\$775,000~~ Price Reduced to **\$675,000**

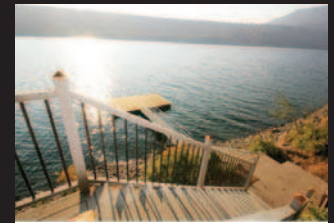
INTERMOUNTAIN REALTY, INC.
BAKER CITY (541) 523-4434



\$299,000 - ONE OF THE BEST VIEWS AROUND!

Choice building lot in Ontario. One of the best view lots in Malheur County. View of Ontario, Payette, Nyssa, Malheur Butte, Bogus, Vale and lots of beautiful scenery in between. A gravel road is in and approved by county. Seller is willing to negotiate. MLS #98568396 1862-14 Call TRAVIS

MALHEUR REALTY
ONTARIO (541) 889-5800



ULTIMATE LIVING AT WALLOWA LAKE.

This custom 3-level log home has 3 bedrooms and 3 baths. One of the many features is a large deck with stairs to your own private dock. Master suite with fireplace! RMLS# 14012895 **\$979,000**

REAL ESTATE ASSOCIATES
JOSEPH (541) 432-4060



CUSTOM LOG HOME

2 level, 2 Bed, 2 Bath. Approx. 2000 sf Vaulted Ceiling, some Hardwood flooring. Deck, covered Porch and Patio. Trees and View. Large detached Garage/Shop with approx. 10ft. covered wings on each side. Approx. 24'X24' Storage/Barn building. Fenced and cross fenced. H-2273 **\$359,000.**

RUSTIC REALTY LLC
SUMPSTER (541) 894-0116



2915 10TH ST., BAKER CITY

Commercial: Excellent business opportunity in a GREAT LOCATION! Sale includes building, business and land. If you have ever wanted to own your own business, now is your opportunity. Updated in 2012. **\$225,000** RMLS #15104708

SUNFIRE REAL ESTATE
BAKER CITY (541) 523-7727



CABIN IN THE WOODS

Good Hide a Way or retreat. This half an acre lot has two structures on it, both 196 sq. ft. Has been perked for a standard septic. Electric and phone close by. MLS# 13034378 **\$35,450**

TIMBERLINE REALTY
JOSEPH (541) 432-1234



GRAZING AND FARMLAND

Currently raising dry land alfalfa. 1,324 AC with good deer hunting. There are ponds on property and very private. Great mountain views! Call for details. #14072900 **\$861,250**

WALLOWA COUNTY BROKERS
JOSEPH (541) 432-3131



5.31 IRRIGATED ACRES

with ponds, mtn views, greenhouses, fruit trees, historic barn & white picket fence. 3,334 sf, classic 2 story farmhouse w/full apartment. 4BD, 3BA with many recent updates awaiting your finishing touches. New electric heat pump & air cond, hot tub, solar hot water heater, new siding. RMLS# 14185090 - **\$375,000**

WALLOWA MOUNTAIN PROPERTIES, INC.
ENTERPRISE (541) 426-3026



BAKER COUNTY, RICHLAND, OR

- 200+/- acres of which 149 acres are irrigated. Custom home, outbuildings, abundant wildlife, and exceptional views. **\$1,950,000.** #RG02015

THE WHITNEY LAND CO.
PENDLETON (541) 278-4444



WATERFOWL/TRAINER RANCH,

1726.36 acres neighbors above "Waterfowl" property, DU, Fed project, waterfowl, upland birds, deer, home. Very close to Malheur Refuge. **\$2.495M**

WILBURN RANCH BROKERAGE
LONG CREEK (541) 421-5300

Autumn
SALE
Celebrate the Season with these Best Buys!