

BOARDMAN RURAL FIRE DISTRICT

300 SW Wilson Ln. • Boardman, OR 97818 • 541-481-3473



Fire Chief
Marc Roglestad



Asst. Chief
Bill Ellis



Fire Marshall
Marty Broadbent



Lt Adam
Cole



Lt Zack
Lantis



Lt. Casey
Zellars



Jane
Akers



Cody
Allphin



Jordan
Braun



Bobbie
Broadbent



Jessie
Davilla



Tammy
Ellis



Jose
Espinoza



Virginia
Garcia



Yaniva
Garcia



Jeremy
Gierke



Dixie
Gonzales



Suzanne
Gray



Minerva
Hernandez



Richard
Hernandez



Tristan
Holecheck



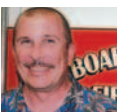
Donna
Irons



Sam
Irons



Kimberly
Juarez



Paul
Keefer



Emerald
Lantis



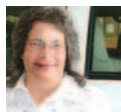
Jordan
Mashos



Phillip
McDonough



Jr (Wenceslao)
Olvera



Teresa
Parsons



Eric
Ritsch



Tim
Rust



Gene
Sheppard



Tammy
Sheppard



Riley
Snoderly



Jared
Thompson



Sheryl
Thompson



Samantha
Vivanco



Katie
Wright



Kyle
Wright

Not
Pictured:
John
Schiller



Boardman Fire District Apparatus:

Station 1 (Main Station)

E-841:	2006	International 4x4	Type 1 Interface CAFS Engine
E-821:	2000	Freightliner	Type 1 Structure Engine
B-851:	1994	Dodge Ram 3500	Type 6 Brush Truck
Tender 861:	2006	International	Type 1 Engine/Tender
B-852:	2008	Ford	Type 6 Brush Truck
T-824:	2015	Pierce	Ladder Truck

Station 3 (Three Mile Canyon)

E-842:	2006	International 4x4	Type 1 Interface CAFS Engine
Tender 862:	1978	Kenworth	Tender

Station 7 (Butter Creek)

E-843:	2006	International 4x4	Type 1 Interface CAFS Engine
B-855:	1979	American General	6x6 Brush Truck/Tender

Thank you Firefighters!

"Growing with Umatilla & Morrow Counties together building a stronger community"



Threemile Canyon Farms, LLC

- Castle Rock Farming LLC • Columbia River Dairy LLC
- Six Mile Land & Cattle LLC • CRF Frozen Foods LLC

75906 Threemile Rd, Boardman OR 97818 • www.threemilecanyonfarms.com

