

AMERICAN WEST

Properties - Hermiston, LLC

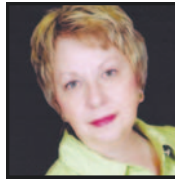
**FIRST CLASS
SERVICE & LOCAL EXPERTISE**



ART KEGLER
Principal Broker
GRI, Owner
541-720-2020
realtorart@centurytel.net



PATSY KEIMIG
Principal Broker
CRS, GRI
541-571-5758
pkeimig@pkeimig.com



SHIRLEY PARSONS
Principal Broker
GRI, ABR
541-561-7434
sparsons@eotnet.net



NANCY WALCHLI
Broker, GRI
541-571-1723
nwalchli@eotnet.net



TAMI REBMAN
Broker
541-720-1758
tami.rebman@gmail.com



PATTI BURRES
Broker
541-571-5888
pattiburres@eoni.com



SHERYL NEWTON
Broker
CRS, GRI, ABR
541-571-4141
sherylnewton@msn.com



ELVA PINTO
Broker
541-571-6476
pinto29@gmail.com
Servicio en Español



SHERIE BRITT
Broker
541-720-1192
sheriebritt@gmail.com



HERMISTON: 320 South Hwy 395 IRRIGON: 170 Columbia River Hwy BOARDMAN: 2 Marine Dr.
541-564-0888 541-922-2888 541-481-2888

LIKE
US ON



WWW.AMWESTPROP.COM

JUST LISTED



\$259,900 - 4 BEDROOM 2.5 BATH 3 CAR GARAGE, RV Parking, Stainless Steel appliances, Granite counter top with Island. Covered Back Deck with Vinyl Fencing. Call SHIRLEY PARSONS 541-561-7434

NICELY KEPT DUPLEX



\$184,900 - ONE LEVEL NEWER 2 BEDROOM, 2 BATH DUPLEX UNIT situated in a cul-de-sac neighborhood. Includes range, fridge, microwave, dishwasher and has washer/dryer hook-ups. Easy care yard, Great rental history, single-car garage. Call **SHERYL NEWTON 541-571-4141 RMLS# 12601796**

PRICE REDUCED



4 BEDROOM SHOP

\$182,500 - NEWLY REDUCED IN PRICE 4 nice sized bedrooms huge master suite all on one level, 2 and a half baths all situated on .37 of an acre. Beautiful kitchen space, gas Fireplace. Large Fenced yard and plenty of parking with alley access off the fenced back yard, detached shed, RV parking. The attached shop is 702 square ft. with a 220 plug, 2 roll-up doors, man door & shelving. Call **SHERYL NEWTON 541-571-4141 RMLS# 14205712**

CUSTOM 4 BED, 2 BATH



\$230,000 - CUSTOM 4 BEDROOM 2 BATH BEAUTIFUL OPEN FLOOR PLAN, Stucco Custom Rancher w/Finished Bonus room above garage. Gorgeous Granite kitchen counters & Island, Hickory Wood Custom Cabinetry w/pullouts, thru-out the home. Tiled floors in bathrooms, laundry and kitchen. Recessed lighting, ceiling fans and wired home ext. Security system's kit appliances, 9' ceilings, covered lit patio area with gas BBQ hk-up, hot tub plug, RV parking space. Call **SHERYL NEWTON today 541-571-4141 #15021845**



\$239,900 - ONE OF A KIND HOME THAT HAS ROOM FOR EVERYTHING! Over 1800 sq. ft home with custom kitchen cabinets and granite counters and tile flooring. 3 bedrooms, 2 bath, separate living and family room w/fireplace Covered patio/deck complete with hot tub. This family friendly home comes with amazing landscaping, fruit trees, THREE Lots and a 600 sq. ft shop. Separate RV parking. Call **SHIRLEY today for your personal showing. 541-561-7434. MLS #15173022**

JUST LISTED



\$249,000 - JUST LISTED 3 BEDROOM 2 BATH COUNTRY CHARMER 2.45 Irrigated Acres, Bunk House, small shop, solid set Sprinkler in pasture. Must see call **SHIRLEY PARSONS 541-561-7434**



\$249,800 - THIS ONE HAS IT ALL! At overlook ridge subdivision live in style & comfort in this beautiful two story home, 4 bedrooms, 2.5 baths. Open floor plan with a large kitchen with an island is open to family room, formal living and dining, covered patio & RV pad. RMLS# 13518079 Call **ELVA PINTO 541-571-6476**



\$259,000 - EXCELLENT 20.98 ACRE PARCEL that can be subdivided. Property has well, septic and utilities plus 19.47 acres of water rights irrigated. There are some out buildings. Call **ELVA PINTO 541-571-6476 RMLS# 11274881**



\$322,000 - BEAUTIFUL PROPERTY WITH COUNTRY SETTING 2 Level Home 5 Bedrooms 3/2 Baths Fireplace on 3.9 Acres. 3 out buildings 1 Huge Metal building and 2 open storage buildings. Must see call **ELVA PINTO for your showing 541-571-6476 #15166701**



\$355,000 - BEAUTIFUL 2500 SQ FT VALLEY HOME with a attached 2 car garage. Main shop is 70'x60' with a concrete working pad, electric doors & office space. There is also a pole shop 50'x40'. All this in a timber setting on 20 acres with amazing mountain views. Only 18 miles from Heppner and approx 12 miles to Penland Lake. Call **SHERIE BRITT for your personal showing 541-720-1192 #14179871**