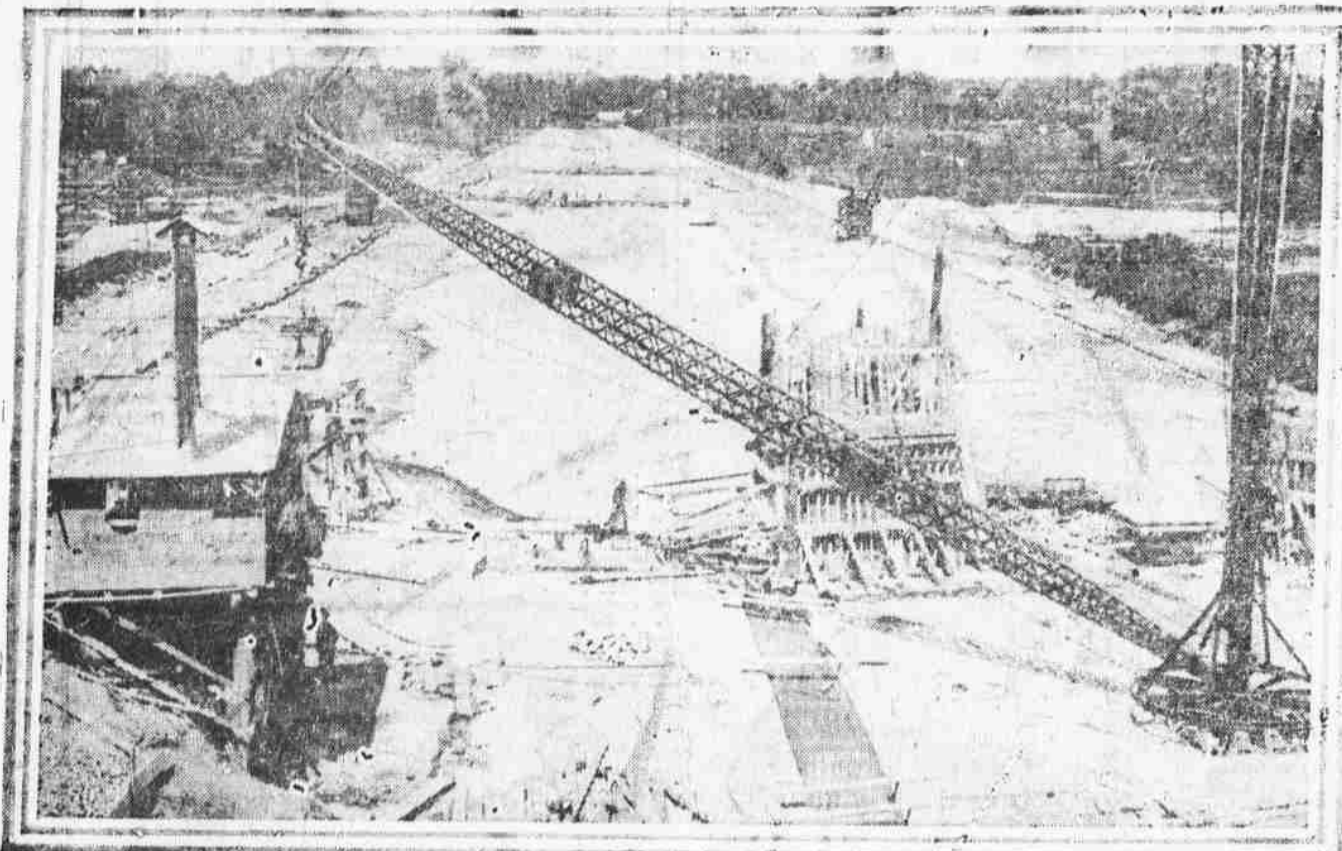


ENTIRE OHIO CITY IS MOVED TO MAKE WAY FOR HUGE DAM TO PREVENT PROPERTY DESTRUCTION BY FLOODS



Hundred of men are being kept steadily busy on the construction of the five huge dams designed to prevent a repetition of the disastrous flood that in 1913 caused the loss of many lives and the destruction of millions of dollars worth of property in territory surrounding Dayton, Ohio.

Giant cranes are employed to remove the millions of cubic feet of earth on the site of the dams. The accompanying photograph shows a long strip of territory that is being converted to use by the Miami District Conservancy in the construction of the \$35,000,000 project.

DATON, Ohio, Sept. 21.—(L. N. S.)—The little town of Osborne is moving. Within a period of a few months the little city will be located on a site two miles from its present location. Construction of the great Miami Valley Conservancy District, at a cost of approximately \$35,000,000, has necessitated the removal of this city. The building of a dirt road, over which Osborne will make its trek to a new site already has been completed, and buildings in the little city's business district are being razed. Homes are being demolished or taken down, piece by piece. The citizens of Osborne—each of the 1251—are glad that "moving day" has arrived. In their new homes "up the road" they will be assured that no repetition of the 1913 flood will ever come. When the flood of 1913 ripped into Dayton Osborne also was flooded. When the citizens of Dayton and those of other towns and districts in eight adjoining counties banded themselves together to make the Miami Valley Conservancy District, which is a joint or government into itself was formed under laws of the state of Ohio.

Will Build Five Dams. The scheme for preventing a repetition of the 1913 floods was worked out by Arthur Morgan and associates. It called for the construction of five great dams in the district, with a system of outlets or spillways, which would release the water behind the dams in such quantities that the streams below the dams would not be overflooded. The dams have been completed. They are gigantic structures, and they withstood the test of this spring. In such a manner as to convince even the most skeptical of the wisdom of the plan. Thirty-seven feet of water backed up behind some of the dams, which could have accommodated one hundred feet more water without danger. There was but one town within the district which lay directly below one of the dams. The law creating the district required that this town be made safe in the future. Only two ways to do this were possible. One was to build a dam completely around the town. The other was to move the town bodily to higher ground some distance away. This was re-

garded as the cheapest and best method of solving the problem. **District Buys Property.** The conservancy district then bought the property of the entire town, through condemnation proceedings, and resold the buildings to the owners who wanted them. Few there were who decided to go along with the old town to the new site and build new homes. This was done in a number of cases, the old buildings being abandoned for disposal as the district may see fit. It was a money-making deal for the owners, as they made about \$20,000 through the double transaction. The new town site was selected by a holding company known as the Osborne Removal Company. The new site was platted, sidewalks constructed, streets laid out, trees planted, gas, water and electric lines put in, a location set aside right in the center of the business district for a public park, fountain, rubbers and other things that go to make up a regular city center. The town hall costing \$11,000 which will be the seat of government and home of the fire department, is under way, as is a \$45,000 school building. The new water works system will cost \$26,000 when completed.

Houses Are Moved. Of the 175 houses in the town nearly all will be jacked up and moving apparatus inserted under them. They will then be trundled to the new locations and set up on the new foundations. The removals are to be made without disturbing the families or contents. The houses will be rolled along what is called the "spade handle," in order to evade a state law requiring that a village in extending its corporate limits without losing its rights must confine a strip of land 100 feet wide and extending from the old town to the new site is included in the corporation extension. It is almost two miles long. After Osborne is completely moved this road and the old townsite will be vacated by legal process. The former town will be reconsecrated into farm lands by the conservancy district. Two of the four churches in Osborne already have selected their new locations, and several other industries are making arrangements to locate in the new town. A farmers' co-operative elevator is one of the new buildings and a new station for the two steam lines and the one electric line is ready for occupancy. **Excavation Work Heavy.** In building the five great dams it was necessary to move 25,000,000 cubic yards of earth by wagon and hydraulic power. The fills were made by sluicing earth and gravel along what is known as the core of the dam. It is composed of the finer particles of the filling, with the outer slopes consisting of the coarser sands and gravel. In nearly every case the dams are one thousand or more feet thick at the base. In the construction of the great project three steam roads and one electric line were relocated. All were county and state roads, power lines and telephone lines. The expenses incurred are being paid through the levy of assessments against property benefited, just as taxes are levied. The bond issues are to be retired at the expiration of thirty years.

Study Yourself



Study yourself in your morning clothes your afternoon suit, your formal evening clothes, your negligee. Do you look just as you would wish, or is there a certain stiffening of your figure—a premonitory warning of that set, inflexible contour that kills spontaneity, and unexpectedness, and vivacity and —YOUTH?

What of your corset—is that to blame? Perhaps we can tell you something of a gracious, modern form of corsetry that will be invaluable to you. Certainly we can if you have never worn a

GOSSARD Front Lacing CORSET

MODEL 382—Straight. A lightly boned corset for the slight figure. It has a low, comfortable elastic top, one and one-half inches above the waistline. The medium length skirt is cut straight around the figure, has three hooks and eyes below the front clasp, three sets of hose supporters and a two-inch elastic section at the back. Fancy figured batiste, pink. Sizes 20 to 31. \$5.00
MODEL 383—Curved. For the tall, heavy figure. This model is heavily boned, especially at the back, to care for the woman of long, full proportions below the waistline. The flat back ends in a three-inch section of elastic. There are three hooks and eyes and three sets of hose supporters. Plain coutil, white. Sizes 21 to 40. \$5.00
MODEL 210—Straight. A hip confiner that does not press above the waistline. The outstanding feature of this model is the unusual smooth-line top. From either side of the elastic that tops the center back, the smooth-line graduates to a

four inch width at the front, formed by an elastic section which gives naturally with every movement. A long skirt with four elastic fronts slopes from the very soft short front clasp and is cut straight around to reduce hips and thighs. Five hooks and eyes, three sets of hose supporters. Fancy figured batiste, pink. Sizes 25 to 33. \$5.00
MODEL 211—Average. This model has the inimitable quality of properly corseting an unusually large range of figure types. It may well be termed a general utility corset. It runs two inches above the waistline at the front and graduates to two and one-half inches under the shoulder blades. The skirt is irregular in outline, allowing to proper length over thigh and side back to smooth where smoothing is generally required. It has a four-inch elastic section at the back. Short front clasp, four hooks and eyes, and three sets of hose supporters. The lace and ribbon trim is of unusual daintiness. Figured batiste, pink. Sizes 22 to 32. \$5.00

The People's Warehouse

headed faces, made a solemn promise that it should never happen again, and the engineering that lost complete indicates that it will not—so in the realization of the "promise" they made in the attic the engineers figure that the water storage provided by the dams is 5,000,000 feet of water. The dams, it is claimed, with their contents would retain a flood of 40 feet or more greater than that of 1913 without danger. The cities having sustained the greatest per centage of damage are as-

essed higher than the farm lands. The engineering feat does not mean that the low lands along the stream and rivers will not be flooded again, for they will be, but not to the extent that they were in 1913, but the cities will not be inundated.

The Delta

FOR

HIGH-GRADE CONFECTIONS

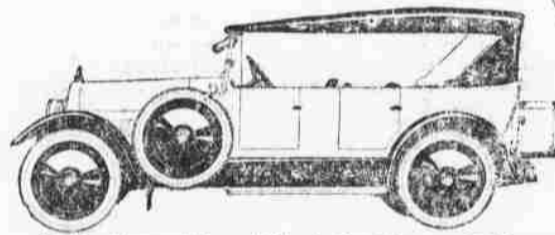
We manufacture our own candies.

BREAKFASTS LUNCHES and DINNERS

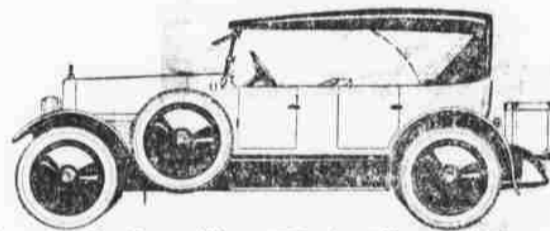
We are sole agents for the famous Hazelwood Ice Cream

The Delta

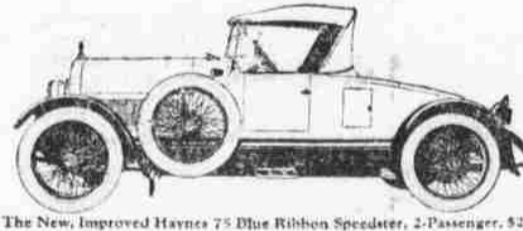
Confectionery and Restaurant E. R. Bashor, Prop.



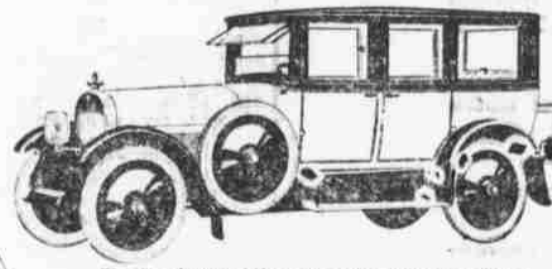
The New, Improved Haynes 75 Touring Car, 7-Passenger, \$2395



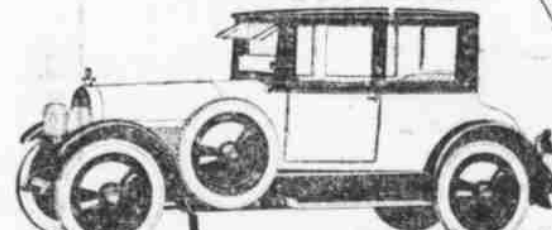
The New, Improved Haynes 75 Tourist, 4-Passenger, \$2395



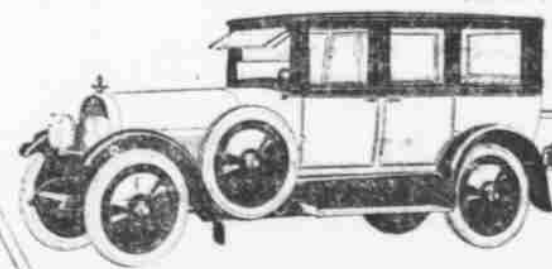
The New, Improved Haynes 75 Blue Ribbon Speedster, 2-Passenger, \$2395



The New, Improved Haynes 75 Sedan, 7-Passenger, \$3195



The New, Improved Haynes 75 Brougham, 5-Passenger, \$3095



The New, Improved Haynes 75 Suburban, 7-Passenger, \$3395

\$2395 to \$3395 C. J. FACTORY

The use of the famous Haynes-built 75 motor and the exclusive Haynes volatizing system, in each type of Haynes 75 assures power, flexibility, speed, swift acceleration and economy. It gives to the Touring Car, Tourist and Blue Ribbon Speedster a confident command of the open road. To the closed cars it means easy handling in the congested traffic of the city. To know the pleasing possibilities and supreme values which these cars present, you should call at our showroom.

Coat tires and wooden wheels are standard equipment on all models of the Haynes 75 models. DISC WHEELS ARE OPTIONAL AT NO EXTRA CHARGE ON ALL HAYNES 35 AND 75 MODELS. The Haynes 75 Blue Ribbon Speedster has coil tires and six wire wheels as standard equipment.

HAYNES SALES & SERVICE CO.

722 Cottonwood St.

Phone 368